



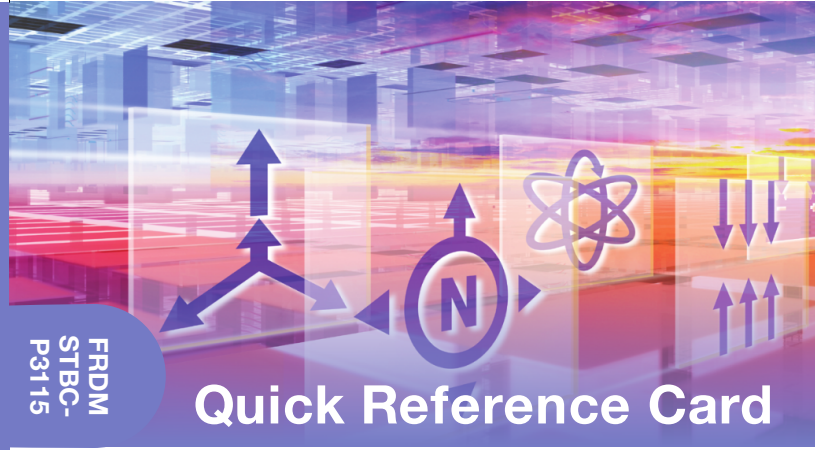
For more information,
visit [freescale.com/
sensortoolbox](http://freescale.com/sensortoolbox)

Freescale and the Freescale logo are
trademarks of Freescale Semiconductor, Inc.,
Reg. U.S. Pat. & Tm. Off. All other product
or service names are the property of their
respective owners.
© 2015 Freescale Semiconductor, Inc.
FRDMSTBCP31150RC REV 1
920-28981 REV A

FRDM
STBC-
P3115

FRDMSTBC-P3115

FRDM
STBC-
P3115



Quick Reference Card

Pressure Sensor Toolbox Development Board
MPL3115A2 I²C precision altimeter sensor



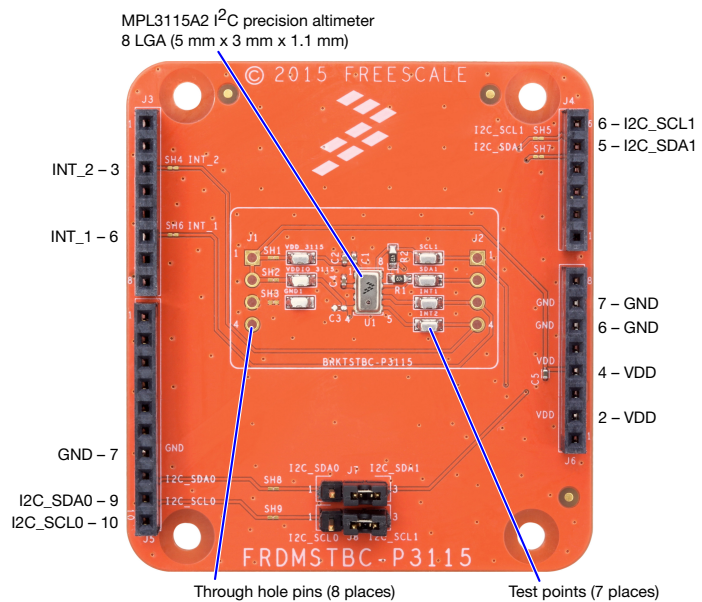
Get Started

Download tools and
documentation under
Jump-Start Your Design
at [freescale.com/
sensortoolbox](http://freescale.com/sensortoolbox)



FREESCALE FREEDOM PLATFORM

- 1 Verify package contents:
 - FRDMSTBC-P3115 development board
- 2 Connect the FRDMSTBC-P3115 development board to a Freescale Freedom development board, such as the FRDM-KL25Z (or any Arduino R3 compatible board). Refer to the Freescale Freedom development board Quick Start Guide for driver information.
- 3 Plug one end of a USB cable into the SDA port on the assembly. Plug the other end of the cable into the USB port on the computer.
- 4 Download and install the latest Sensor Toolbox software at: freescale.com/sensortoolbox
- 5 Start the Sensor Toolbox software.



Get to Know the FRDMSTBC-P3115



Learn more at freescale.com/sensortoolbox