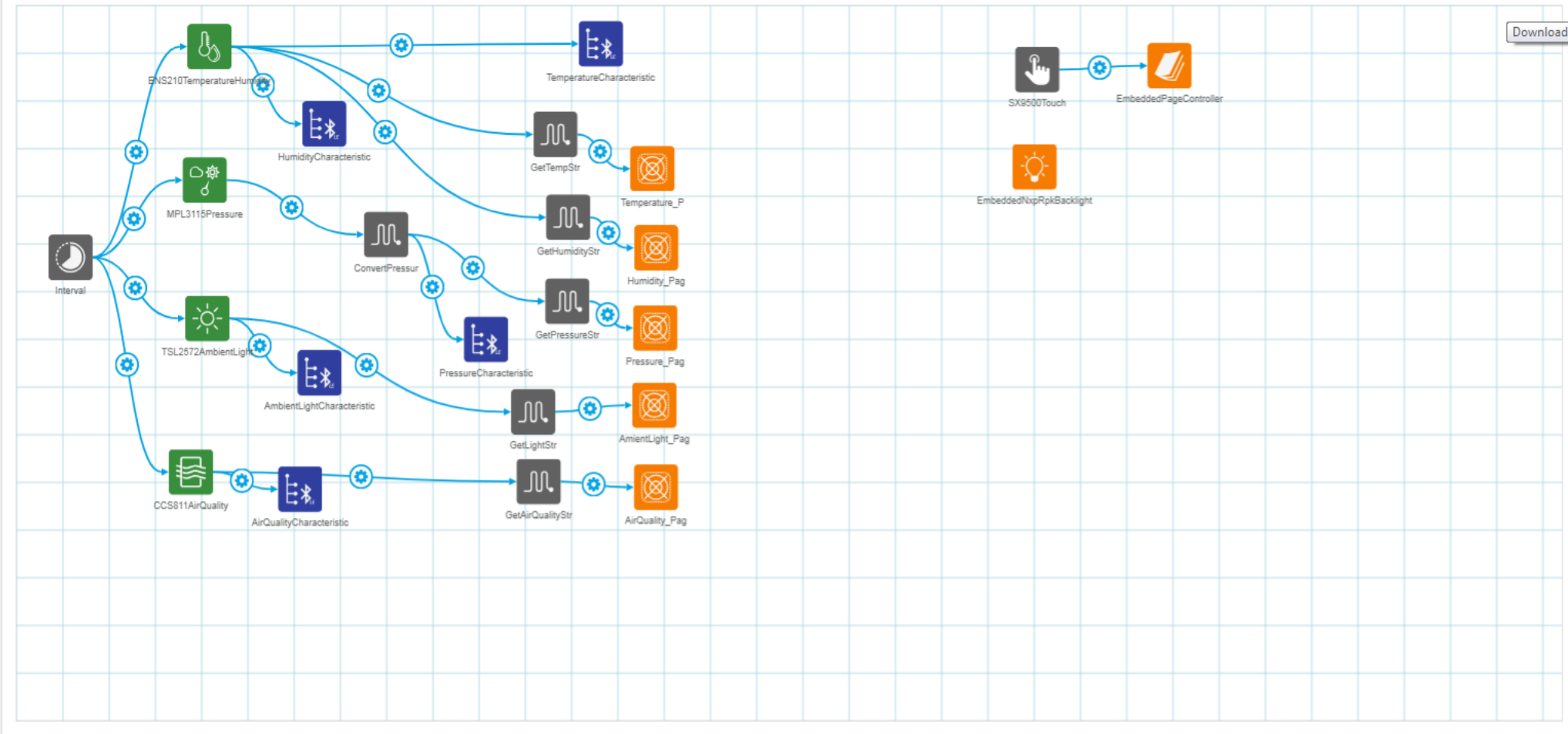




Studio > Rapid IoT Weather Station

NXP RAPID IOT APPLICATION CLOUD

NXP RAPID IOT



ELEMENT TOOLBOX

BLUETOOTH LOW ENERGY

BLE GATT Characteristic BLE Connection

EMBEDDED BASIC

Function	GPIO Pin	ADC Pin	PWM Pin
UART	Regular Expression	Interval	Comparison
Type Conversion	Mathematical Operation	Variable	Debug Print

RAPID IOT

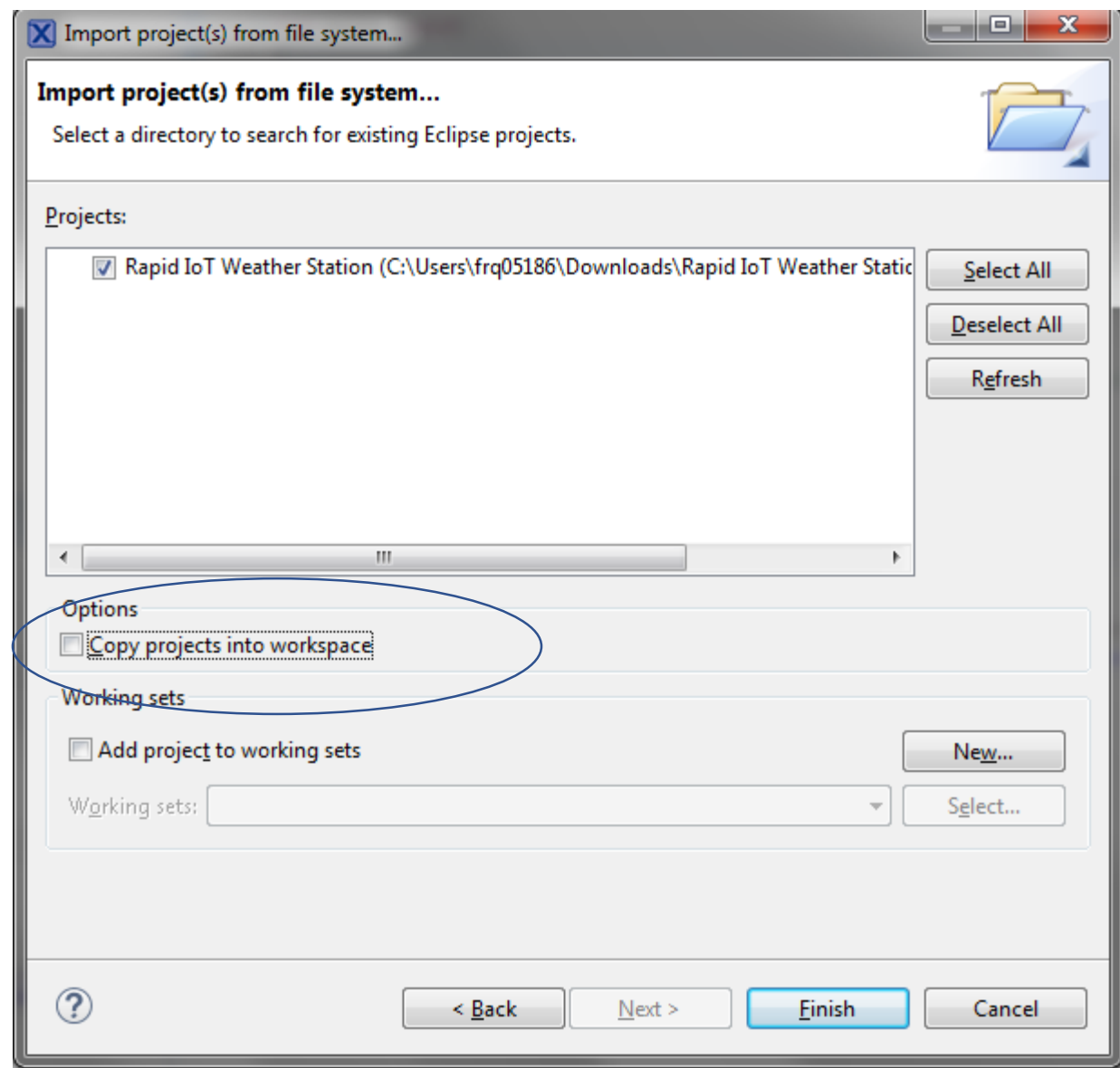
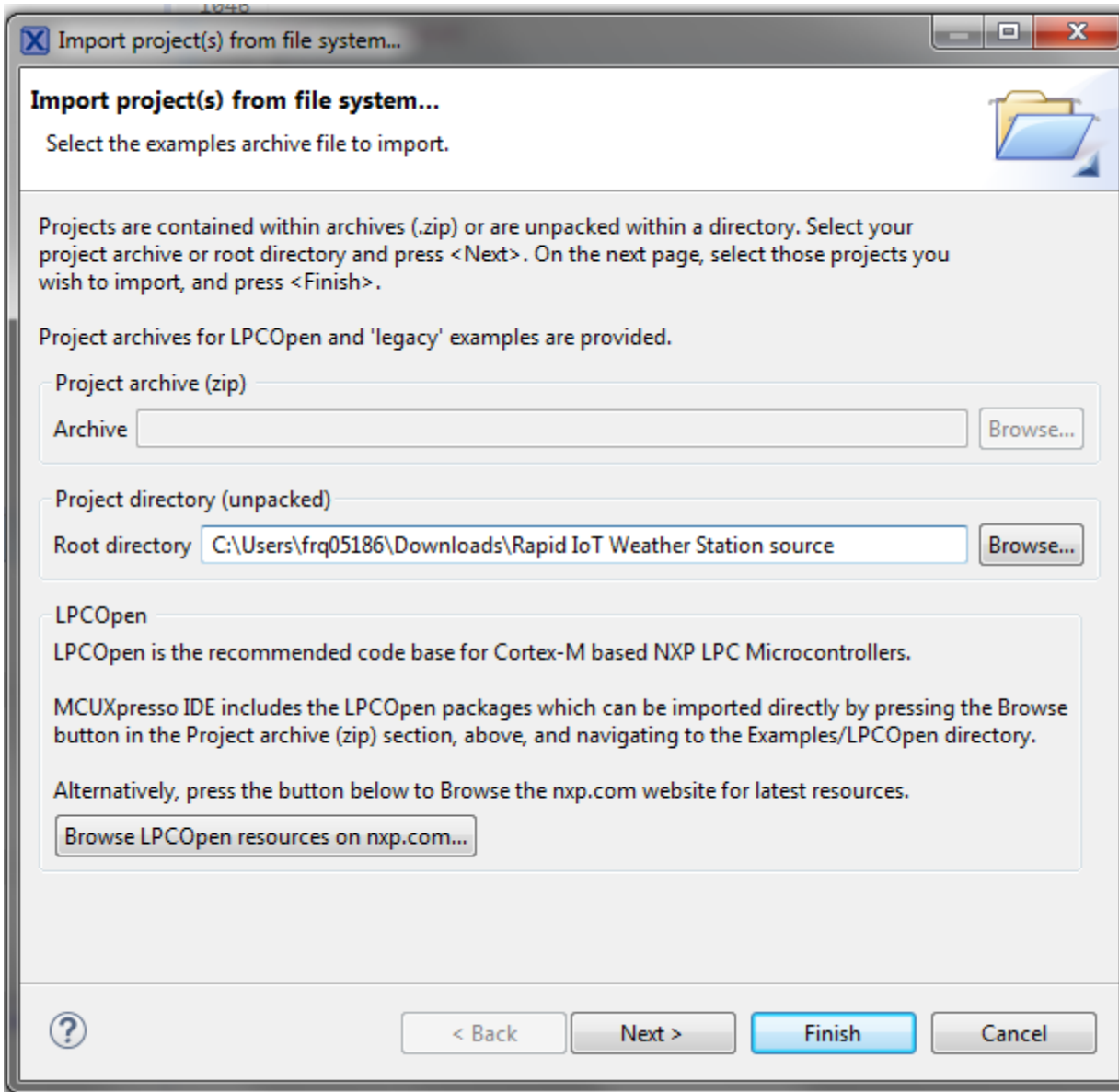
On/Off Page	System Status Page	Labelled Icon	Text Page
Icon Text Lines	Display Page Controller	RGB LED	Backlight
User Buttons	Buzzer	Volansys Thread	

NFC

NFC Well Known Record NFC MIME Record

IMPORTED

Touch, Light, Sensor, and other imported elements. Includes an 'Add Element' button at the bottom.



Recovery - MCUXpresso IDE

File Edit Navigate Search Project ConfigTools Run FreeRTOS Window Help

Project Explorer Peripherals+ Registers Symbol Viewer

- ▶ Rapid IoT Weather Station
 - ▶ Project Settings
 - ▶ Includes
 - ▶ RapidIot_Base
 - ▶ adc
 - ▶ app_src
 - ▶ atmo
 - ▶ auth
 - ▶ battery
 - ▶ ble
 - ▶ block
 - ▶ board
 - ▶ buzzer
 - ▶ ccs811
 - ▶ cloud
 - ▶ datetime

Quickstart Panel (M)= Global Variables (x)= Variables Breakpoints Outline

MCUXpresso IDE - Quickstart Panel

Project: Rapid IoT Weather Station [Debug]

▼ Create or import a project

- New project...
- Import SDK example(s)...
- Import project(s) from file system...

▼ Build your project

- Build
- Clean

▼ Debug your project

- Debug
- Terminate, Build and Debug

▼ Miscellaneous

- Edit project settings
- Quick Settings>>
- Export project(s) to archive (zip)
- Export project(s) and references to archive (zip)
- Build all projects [Debug]