

1 Enabling Debug of a censored Device

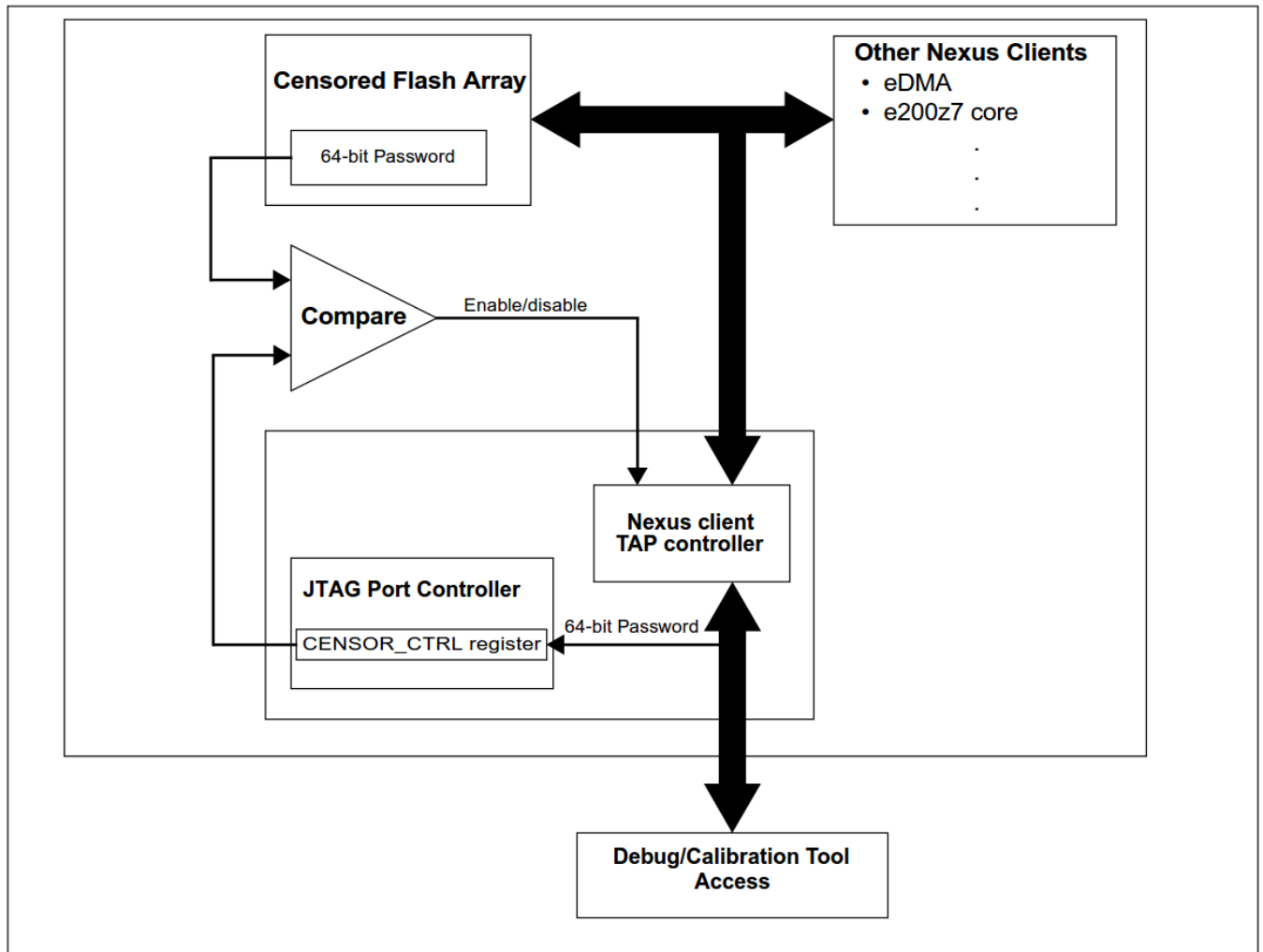


Figure 1. Enabling JTAG/Nexus port access on a censored device

Figure 1 shows how JTAG/Nexus client (debugger) can enable debug. With using of most common debugger user can achieve this several ways. This document describes 3 options below.

1.1 PPCNEXUS (PeMicro)

Enter private flash password in advance menu of debugger option.

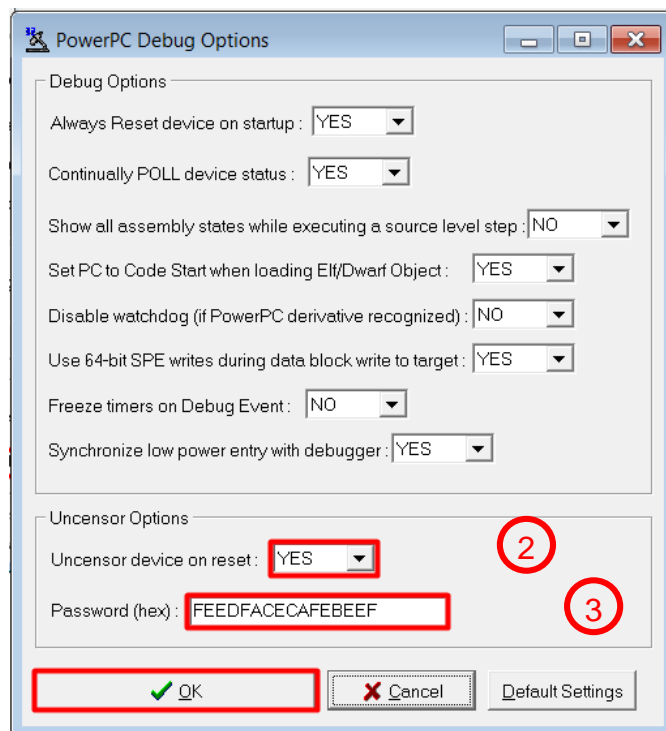
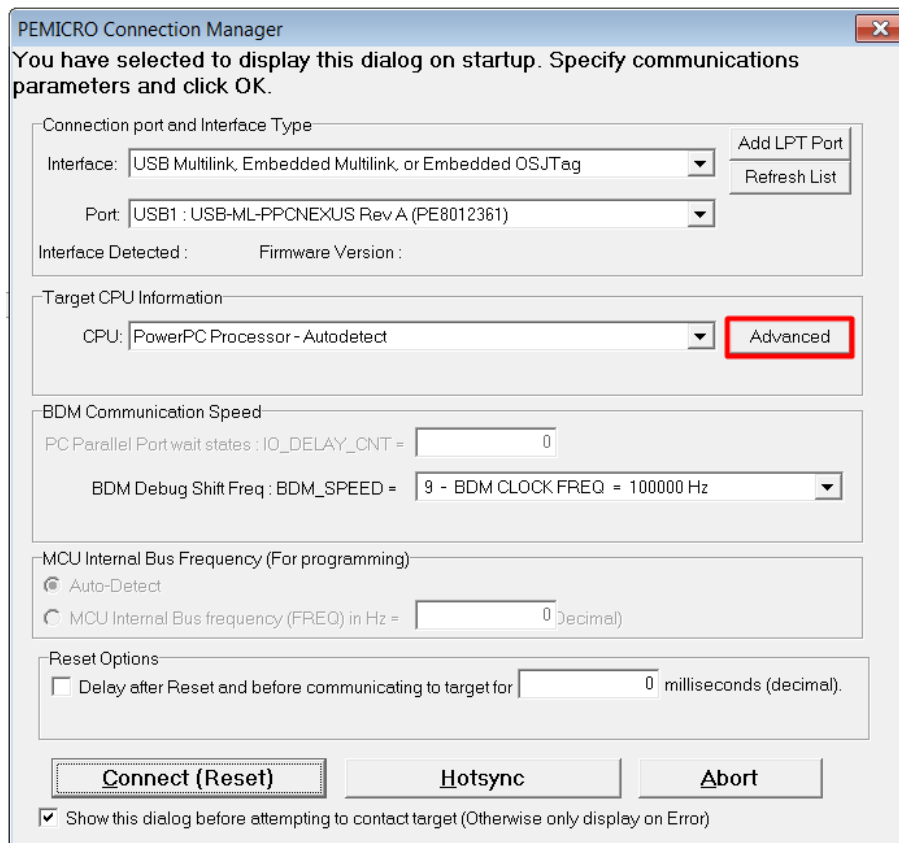


Figure 2. Enabling debug in PeMicro PPCNEXUS - enter private flash password

1.2 CodeWarrior 10.6

Enter private flash password just before debug session is started.

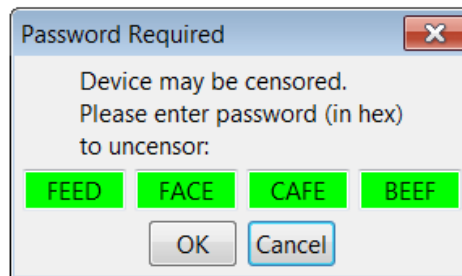
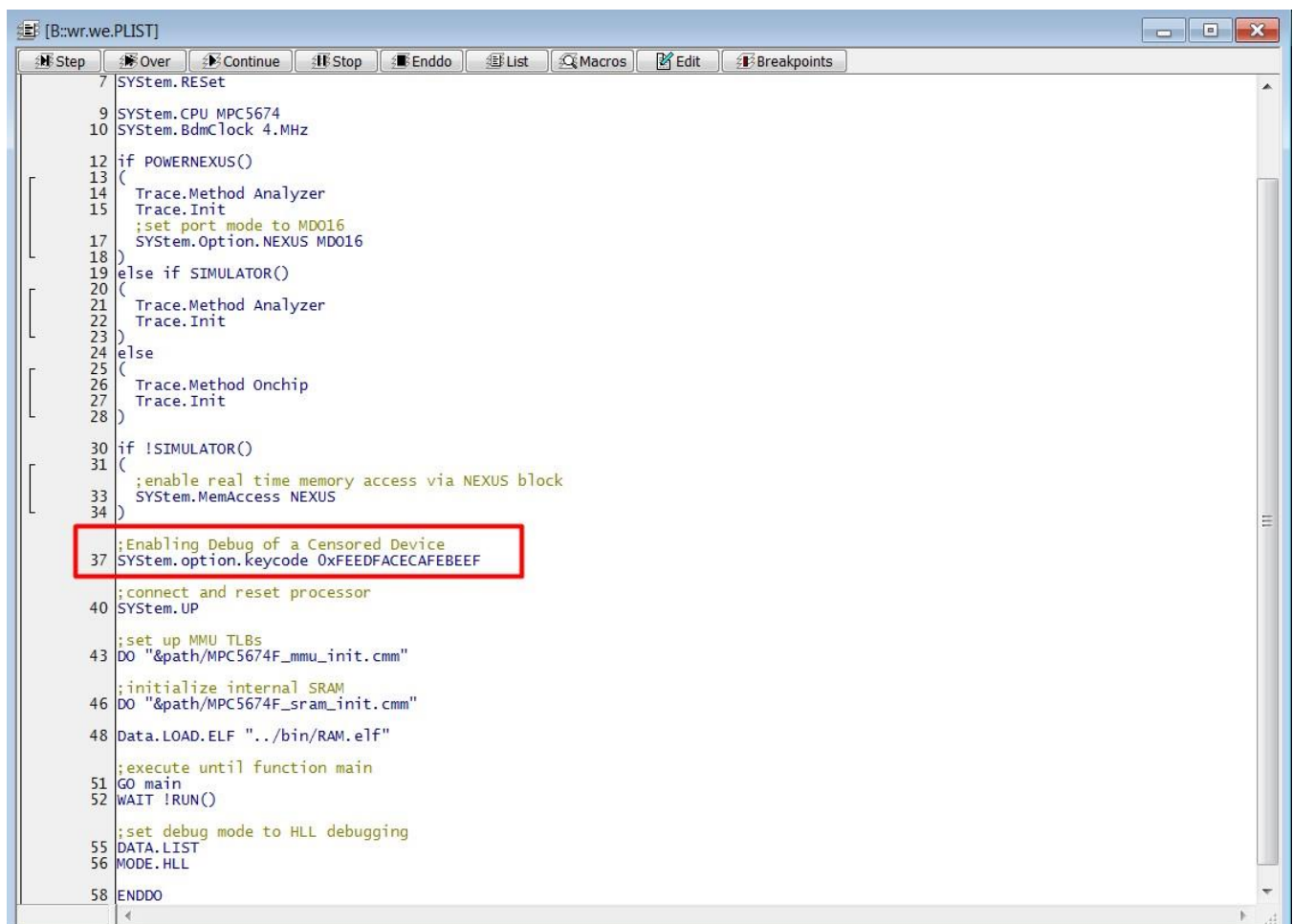


Figure 3. Enabling debug in CodeWarrior 10.6

1.3 TRACE32 (Lauterbach)

Enter private flash password to .cmm batchfile

A screenshot of a CodeWarrior 10.6 window showing a .cmm batchfile. The window title is "[B::wr.we.PLIST]". The menu bar includes Step, Over, Continue, Stop, Enddo, List, Macros, Edit, and Breakpoints. The code is as follows:

```
7 SYSTEM.RESet
9 SYSTEM.CPU MPC5674
10 SYSTEM.BdmClock 4.MHz
12 if POWERNEXUS()
13 (
14   Trace.Method Analyzer
15   Trace.Init
16   ;set port mode to MD016
17   SYSTEM.Option.NEXUS MD016
18 )
19 else if SIMULATOR()
20 (
21   Trace.Method Analyzer
22   Trace.Init
23 )
24 else
25 (
26   Trace.Method Onchip
27   Trace.Init
28 )
30 if !SIMULATOR()
31 (
32   ;enable real time memory access via NEXUS block
33   SYSTEM.MemAccess NEXUS
34 )
37 ;Enabling Debug of a Censored Device
38 SYSTEM.option.keycode 0xFEEDFACECAFEBEEF
40 ;connect and reset processor
41 SYSTEM.UP
42 ;set up MMU TLBs
43 DO "&path/MPC5674F_mmu_init.cmm"
44 ;initialize internal SRAM
45 DO "&path/MPC5674F_sram_init.cmm"
46 Data.LOAD.ELF "../bin/RAM.elf"
47 ;execute until function main
48 GO main
49 WAIT !RUN()
50 ;set debug mode to HLL debugging
51 DATA.LIST
52 MODE.HLL
53 ENDDO
```

The line 37 is highlighted with a red box.