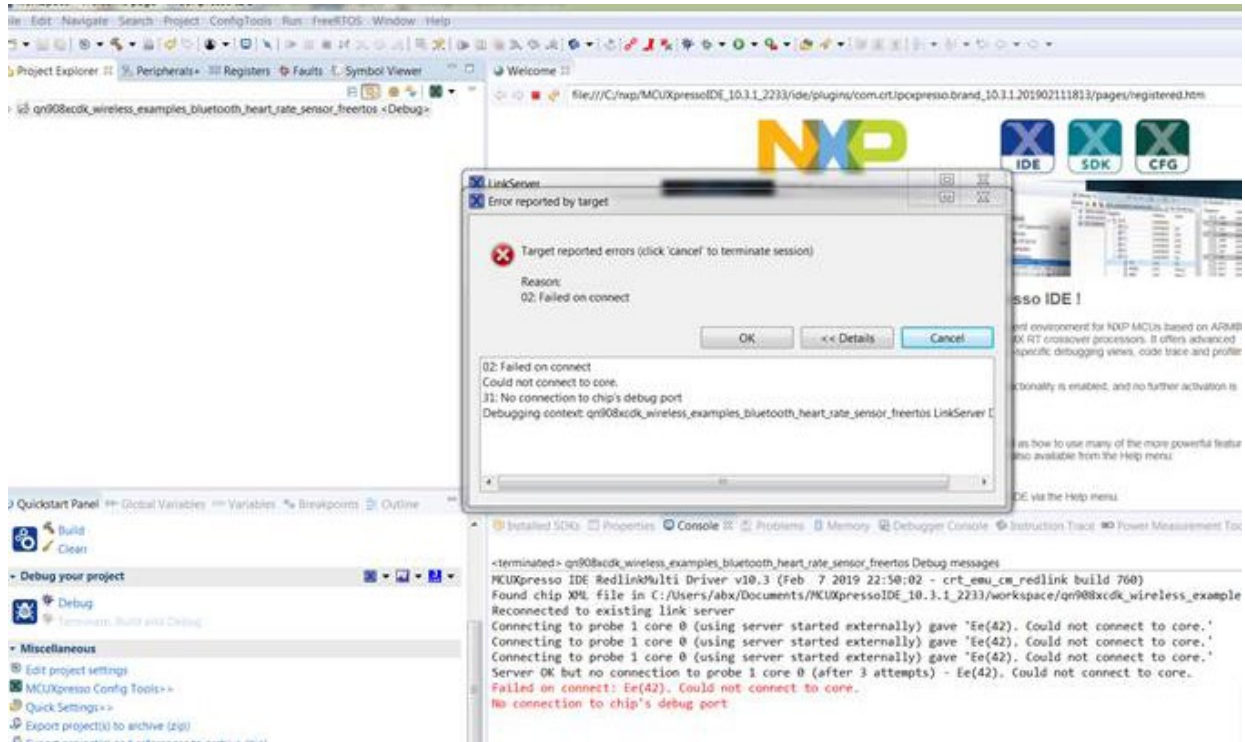


**From:** [Michael Brennan](#)  
**To:** [Michael Brennan](#)  
**Subject:** FW: NXP BLE Kit Help  
**Date:** Tuesday, March 26, 2019 12:43:28 PM

---

I am trying to play with NXP BLE Kit to get acquainted with NXP BLE Stack. I am facing some errors working with example project, please pass on my email to application engineer who can guide me resolving these errors.





**Problem Occurred**

Launching qn908xcdk\_wireless\_examples\_bluetooth\_heart\_rate\_sensor\_freertos LinkServer Debug' has encountered a problem.  
Error in final launch sequence

OK << Details

Error in final launch sequence  
Failed to execute MI command:  
-target-select extended-remote | crt\_emu\_cm\_redlink  
-msg-port=56002 -g -mi -2 -pQN908XC -vendor=NXP  
--connectscript=RunBootRomConnect.scp  
--resetscript=qn908xreset.scp --reset= -ProbeHandle=1  
-CoreIndex=0 -cache=disable --flash-driver= -x  
C:/Users/abx/Documents/MCUXpressoIDE\_10.3.1\_2233/workspace/qn908xcdk\_wireless\_examples\_bluetooth\_heart\_rate\_sensor\_freertos/Debug --flash-dir  
C:/Users/abx/Documents/MCUXpressoIDE\_10.3.1\_2233/workspace/mcuxpressoide\_packages\_support/QN908XC\_support/Flash  
--telnet 3330  
Error message from debugger back end:  
Remote communication error. Target disconnected: Success.

**LinkServer**

17^error,msg="Remote communication error. Target disconnected: Success."

Reason:  
Failed to execute MI command:  
-target-select extended-remote | crt\_emu\_cm\_redlink -msg-port=56002 -g -mi -2  
-pQN908XC -vendor=NXP --connectscript=RunBootRomConnect.scp  
--resetscript=qn908xreset.scp --reset= -ProbeHandle=1 -CoreIndex=0 -cache=disable  
--flash-driver= -x  
C:/Users/abx/Documents/MCUXpressoIDE\_10.3.1\_2233/workspace/qn908xcdk\_wireless\_examples\_bluetooth\_heart\_rate\_sensor\_freertos/Debug --flash-dir  
C:/Users/abx/Documents/MCUXpressoIDE\_10.3.1\_2233/workspace/mcuxpressoide\_packages\_support/QN908XC\_support/Flash --telnet 3330  
Error message from debugger back end:  
Remote communication error. Target disconnected: Success.

OK

led  
sted  
ess  
chi  
ect  
tir  
tir  
OK  
on  
ned

Debugger Console | Instruction Trace | Power Measurement Tool | SWO Trace Config

debug messages  
- crt\_emu\_cm\_redlink build 760  
10.3.1\_2233/workspace/qn908xcdk\_wireless\_examples\_bluetooth\_heart\_rate\_sensor\_f  
gave 'Ee(42). Could not connect to core.'  
gave 'Ee(42). Could not connect to core.'  
gave 'Ee(42). Could not connect to core.'  
s) - Ee(42). Could not connect to core.

**Updates Available**

Updates are available for your software  
Click to review and install updates.  
You will be reminded in 4 Hours.  
Set reminder [preferences](#)