

6

5

4

3

2

1

REVISION RECORD			
LTR	ECO NO:	APPROVED:	DATE:

# MicroPAQ -940S

## Table of Contents

Page	Description
1	Table of Contents
2	Processor & Board ID
3	EXP Port & UARTs
4	Watchdog, Heartbeat, Power Supplies
5	Status Inputs 1 - 8
6	Status Inputs 9 - 16

COMPANY: QEI, LLC

TITLE: MicroPAQ-940S

DRAWN: DATED: 14 May 2018

CHECKED: DATED:

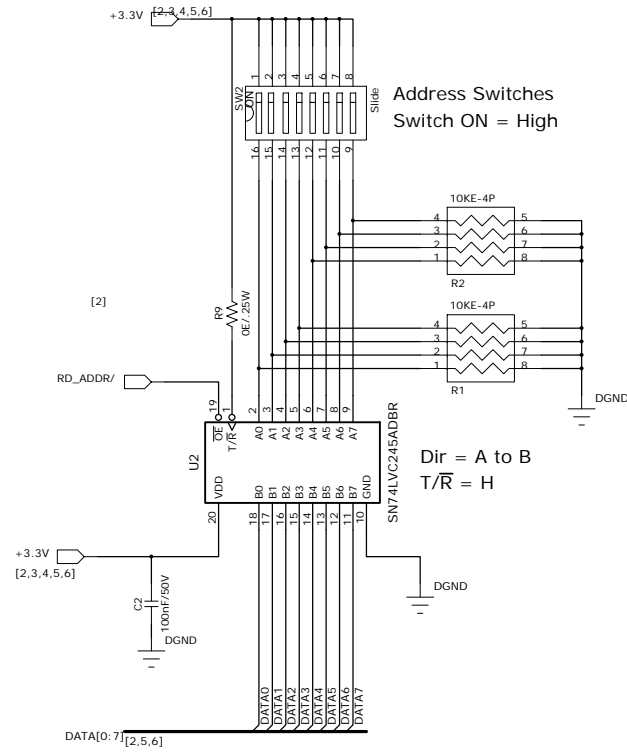
QUALITY CONTROL: DATED:

RELEASED: DATED:

CODE:	SIZE: C	DRAWING NO: 00-057047-001	REV: A2
-------	---------	---------------------------	---------

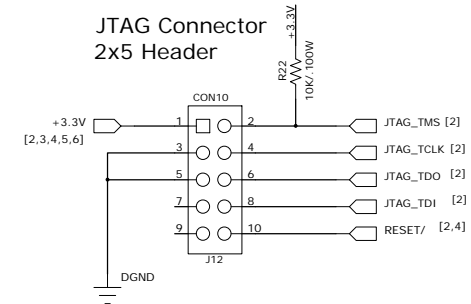
SCALE: SHEET: 6 of 6

REVISION RECORD			
LTR	ECO NO:	APPROVED:	DATE:

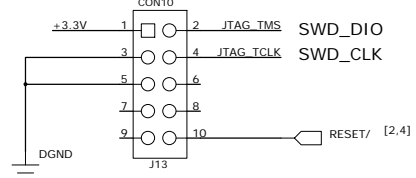


### Debug Ports

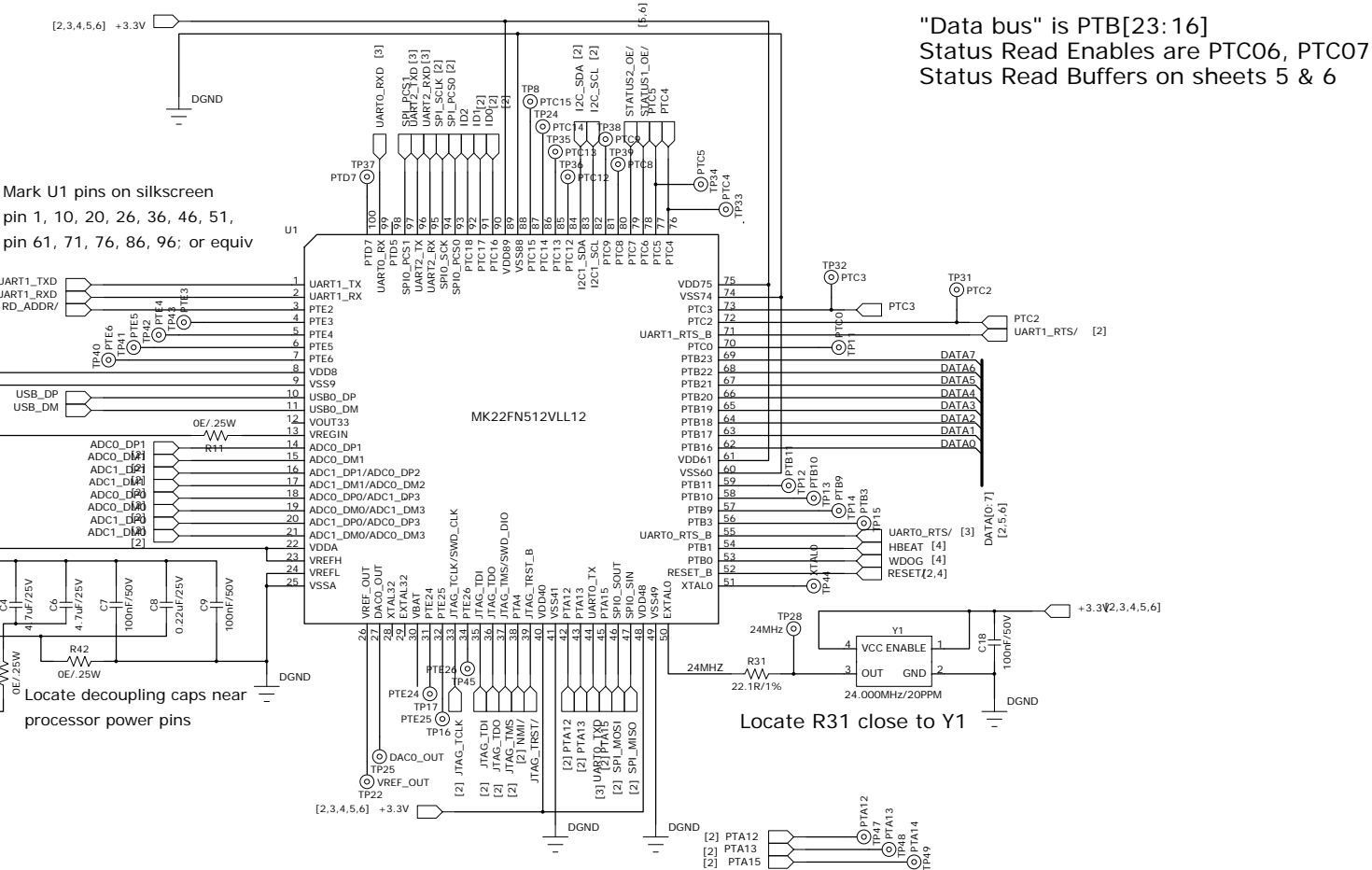
JTAG Connector  
2x5 Header



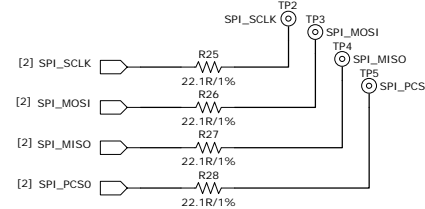
SWD Connector



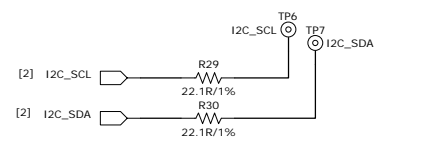
Connector Pinouts from FRDM K22F-SCH.pdf



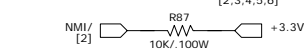
### SPI Port Signals



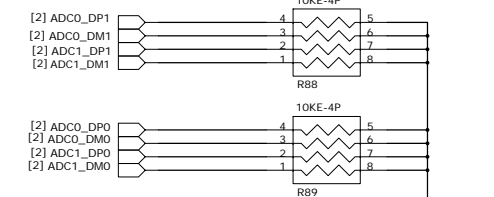
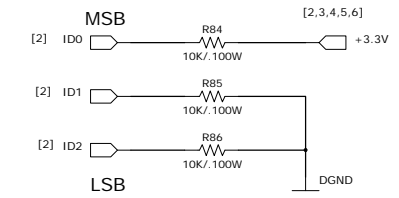
### I2C Port Signals



### NMI Pullup



### Board ID = 001



COMPANY: <b>QEI, LLC</b>			
TITLE: <b>MicroPAQ-940S Processor. Board ID &amp; Debug Port</b>			
CODE:	SIZE:	DRAWING NO:	REV:
<b>C</b>	<b>00-057047-001</b>	<b>A2</b>	
SCALE:	SHEET: 2x		6

DRAWN:	DATED:
CHECKED:	DATED:
QUALITY CONTROL:	DATED:
RELEASED:	DATED:
	14 May 2018

6

5

4

3

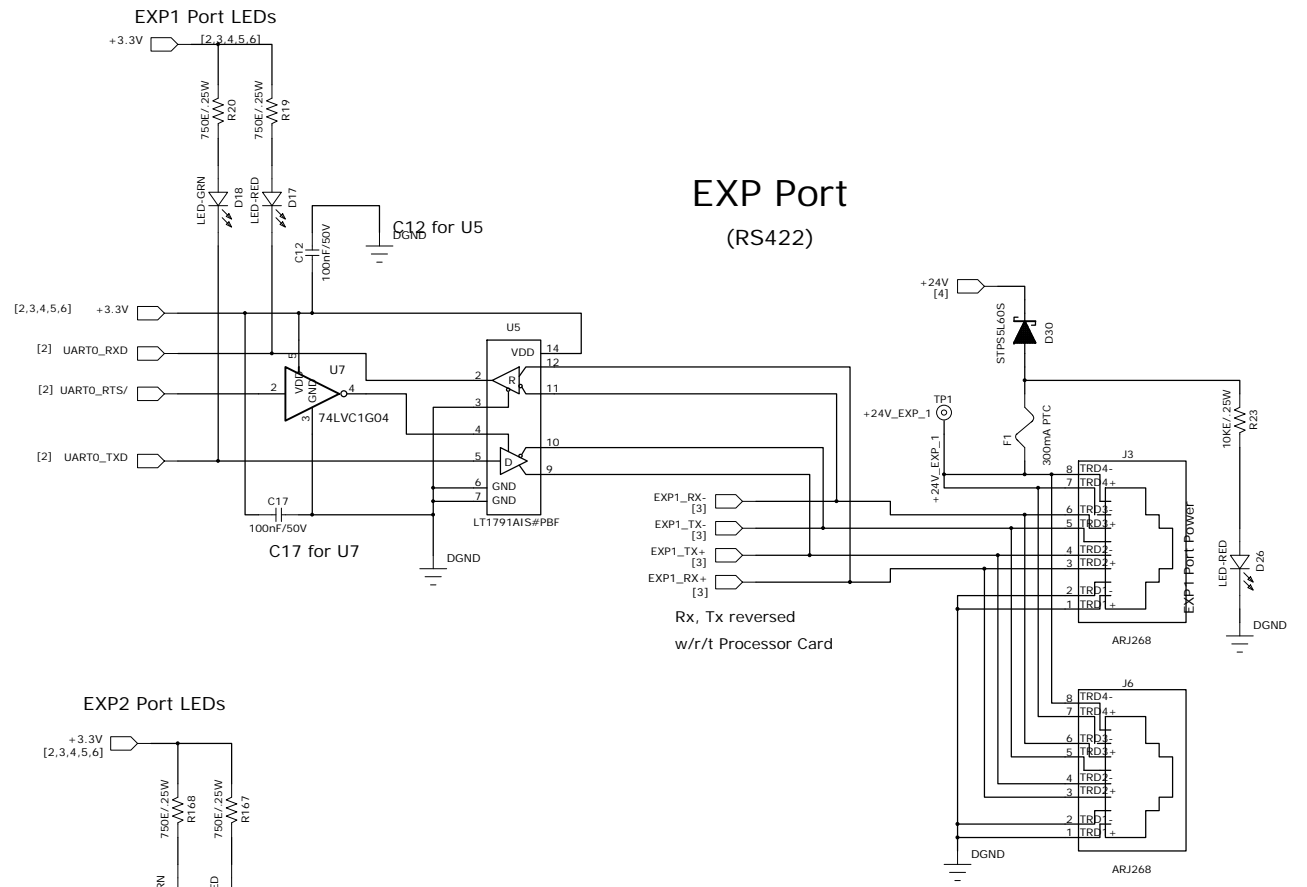
2

1

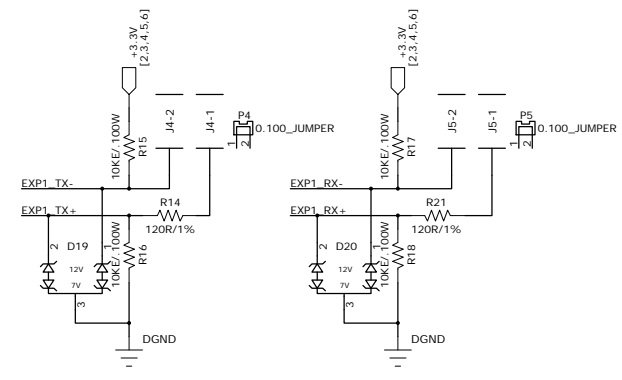
REVISION RECORD			
LTR	ECO NO:	APPROVED:	DATE:

D

D

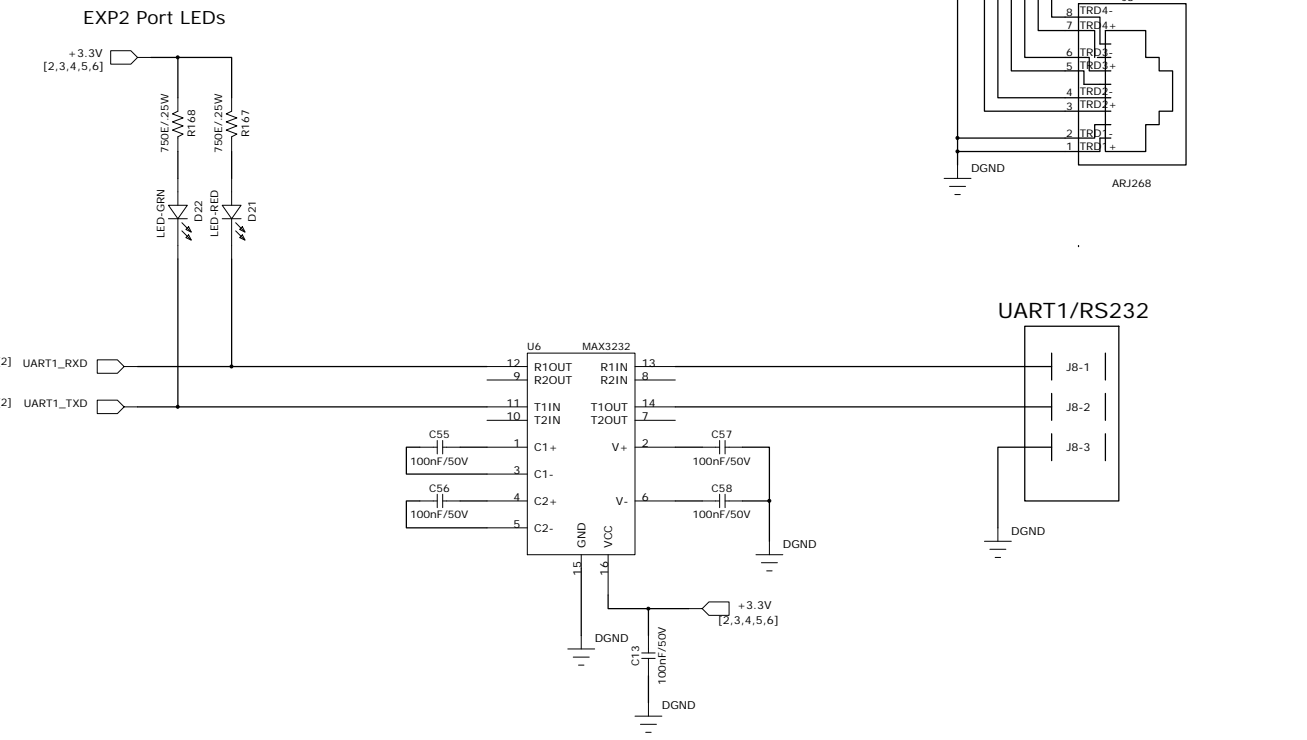


### EXP Port Terminations



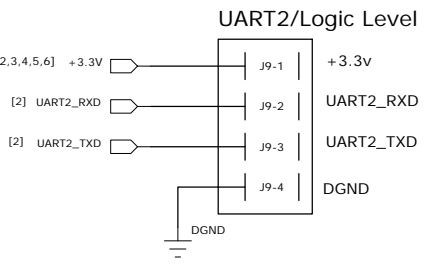
C

C



B

B



A

A

DRAWN:	DATED: 14 May 2018
CHECKED:	DATED:
QUALITY CONTROL:	DATED:
RELEASED:	DATED:

COMPANY: QEI, LLC			
TITLE: MicroPAQ-940S EXP Ports & UART2			
CODE:	SIZE: C	DRAWING NO: 00-057047-001	REV: A2
SCALE:		SHEET: 3 of 6	

6

5

4

3

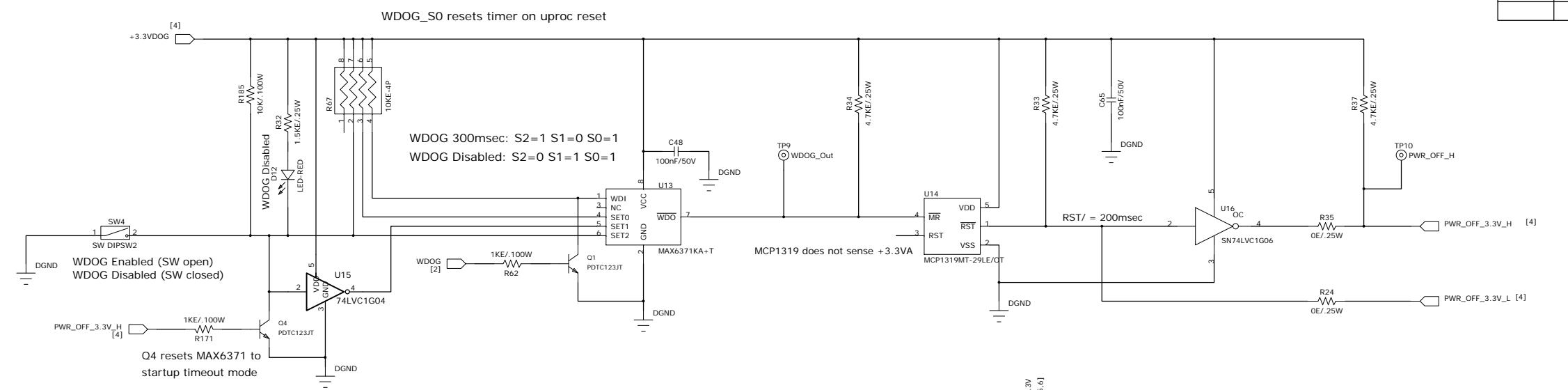
2

1

REVISION RECORD			
LTR	ECO NO:	APPROVED:	DATE:

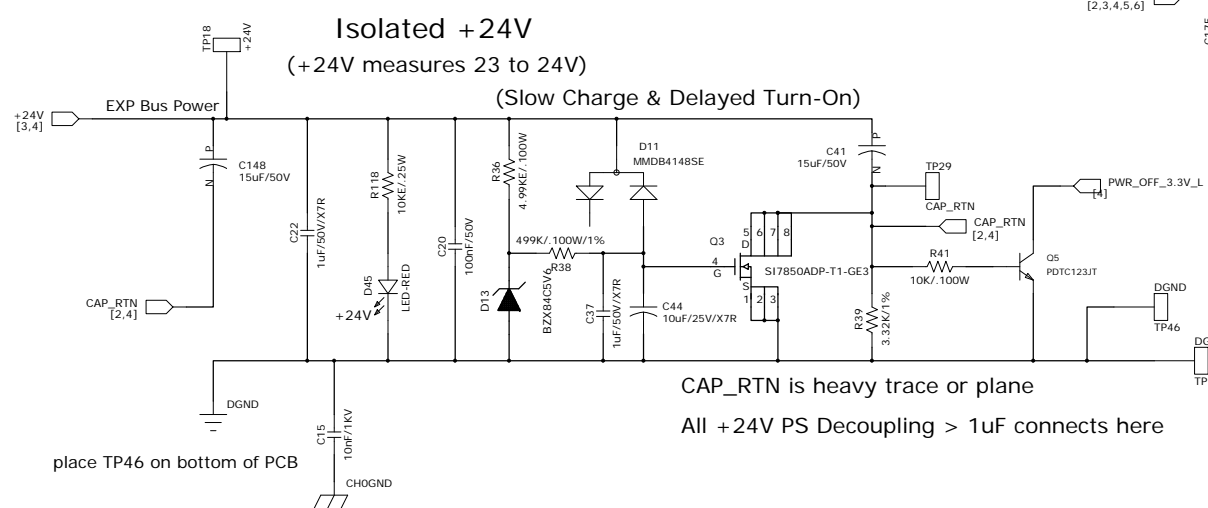
D

D



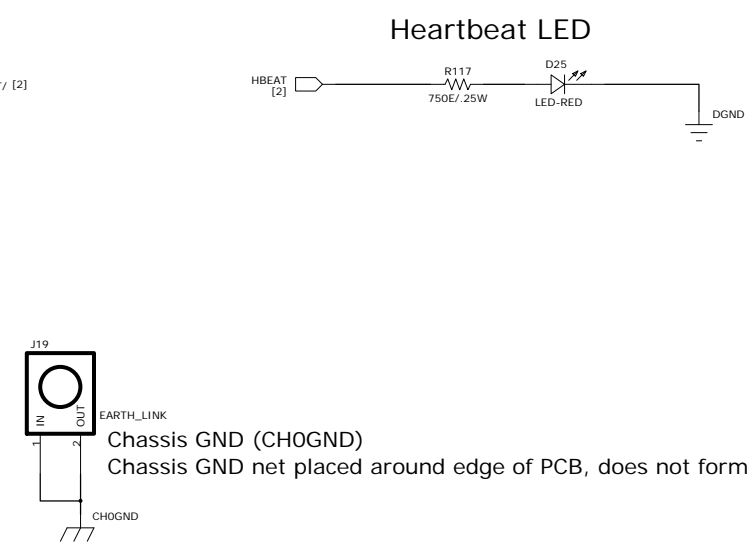
C

C



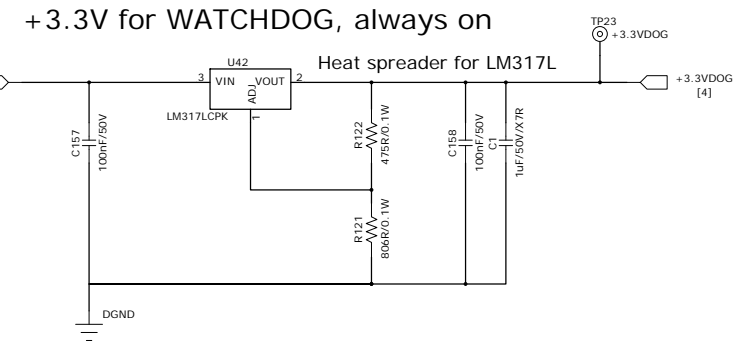
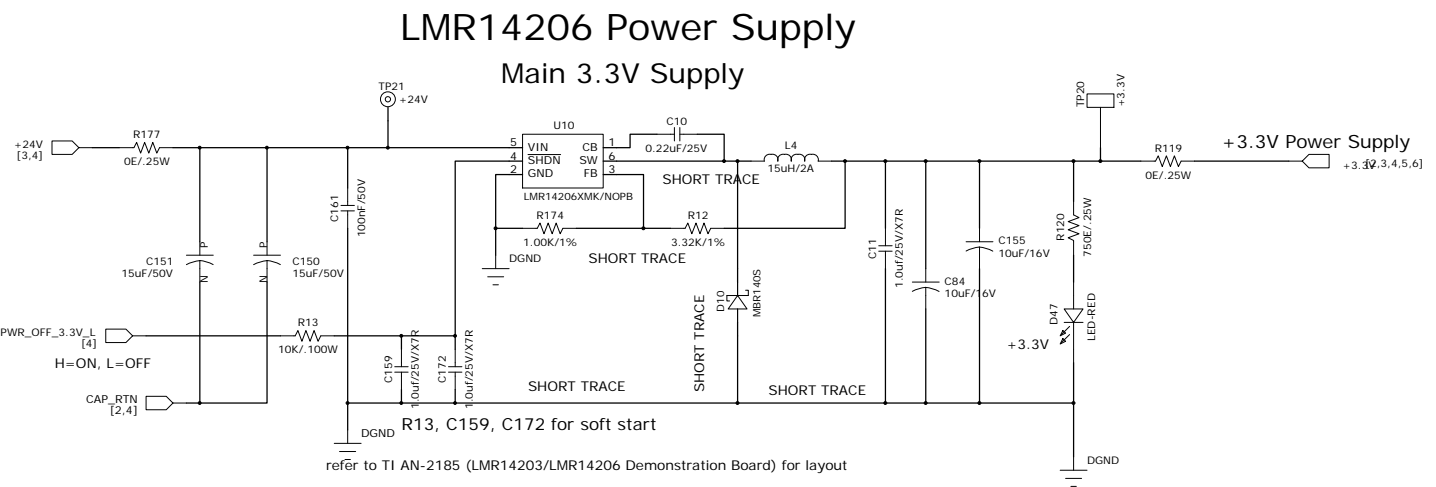
B

B



A

A

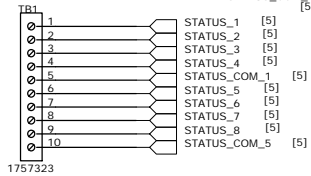


DRAWN:	DATED: 14 May 2018
CHECKED:	DATED:
QUALITY CONTROL:	DATED:
RELEASED:	DATED:

COMPANY: QEI, LLC			
TITLE: MicroPAQ-940S Watchdog, Reset, PS & Hbeat			
CODE:	SIZE:	DRAWING NO: 00-057047-001	REV: A2
SCALE:			SHEET: 4x 6

REVISION RECORD			
LTR	ECO NO:	APPROVED:	DATE:

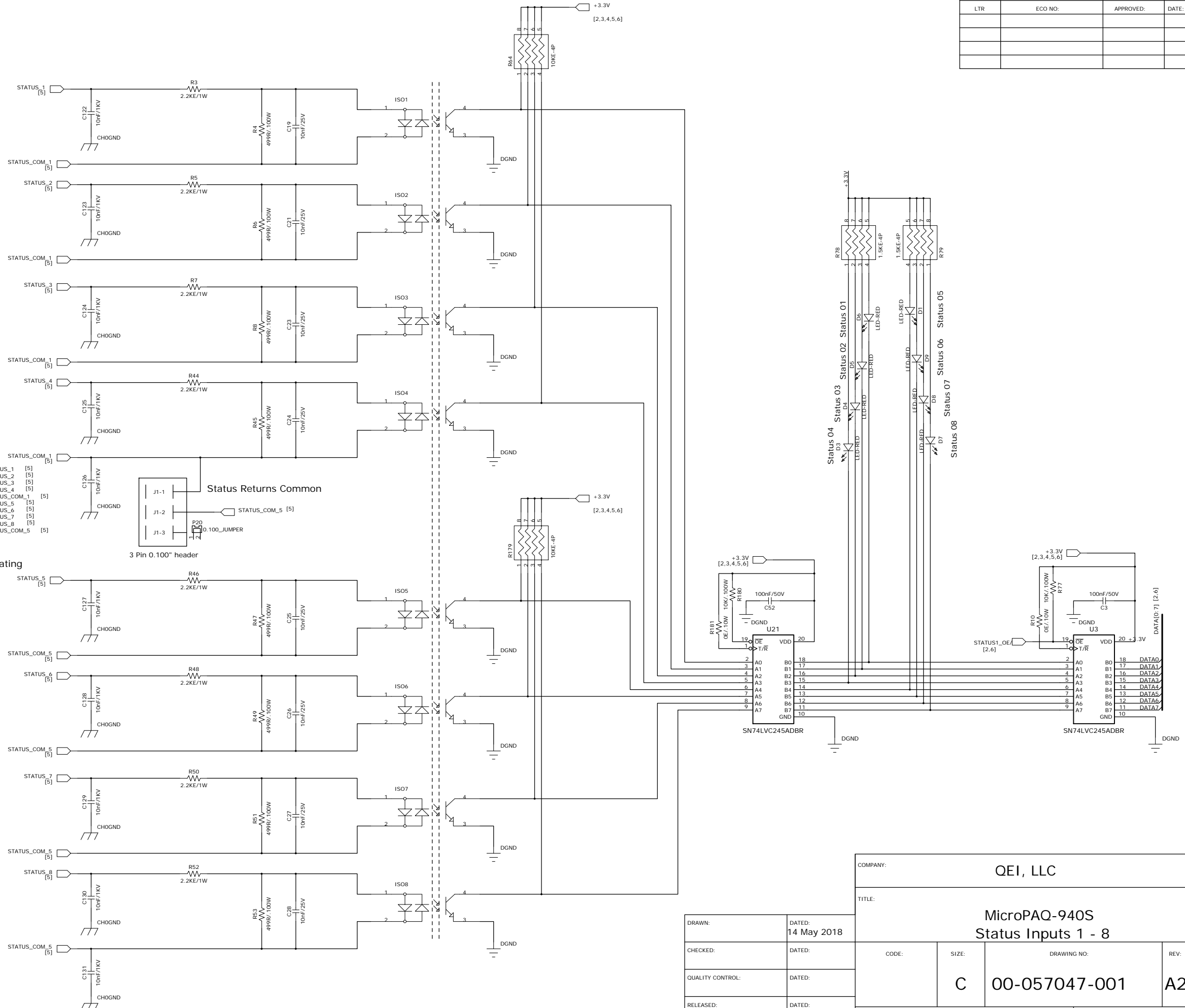
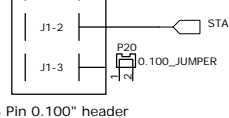
Status Inputs 1 - 8



Phx Contact 1781069 is mating connector to 1757323



Status Returns Common



COMPANY: QEI, LLC

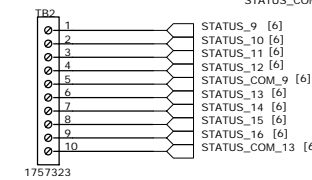
TITLE: MicroPAQ-940S Status Inputs 1 - 8

DRAWN:	DATED: 14 May 2018
CHECKED:	DATED:
QUALITY CONTROL:	DATED:
RELEASED:	DATED:

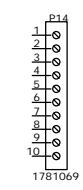
CODE:	SIZE:	DRAWING NO:	REV:
C		00-057047-001	A2

REVISION RECORD			
LTR	ECO NO:	APPROVED:	DATE:

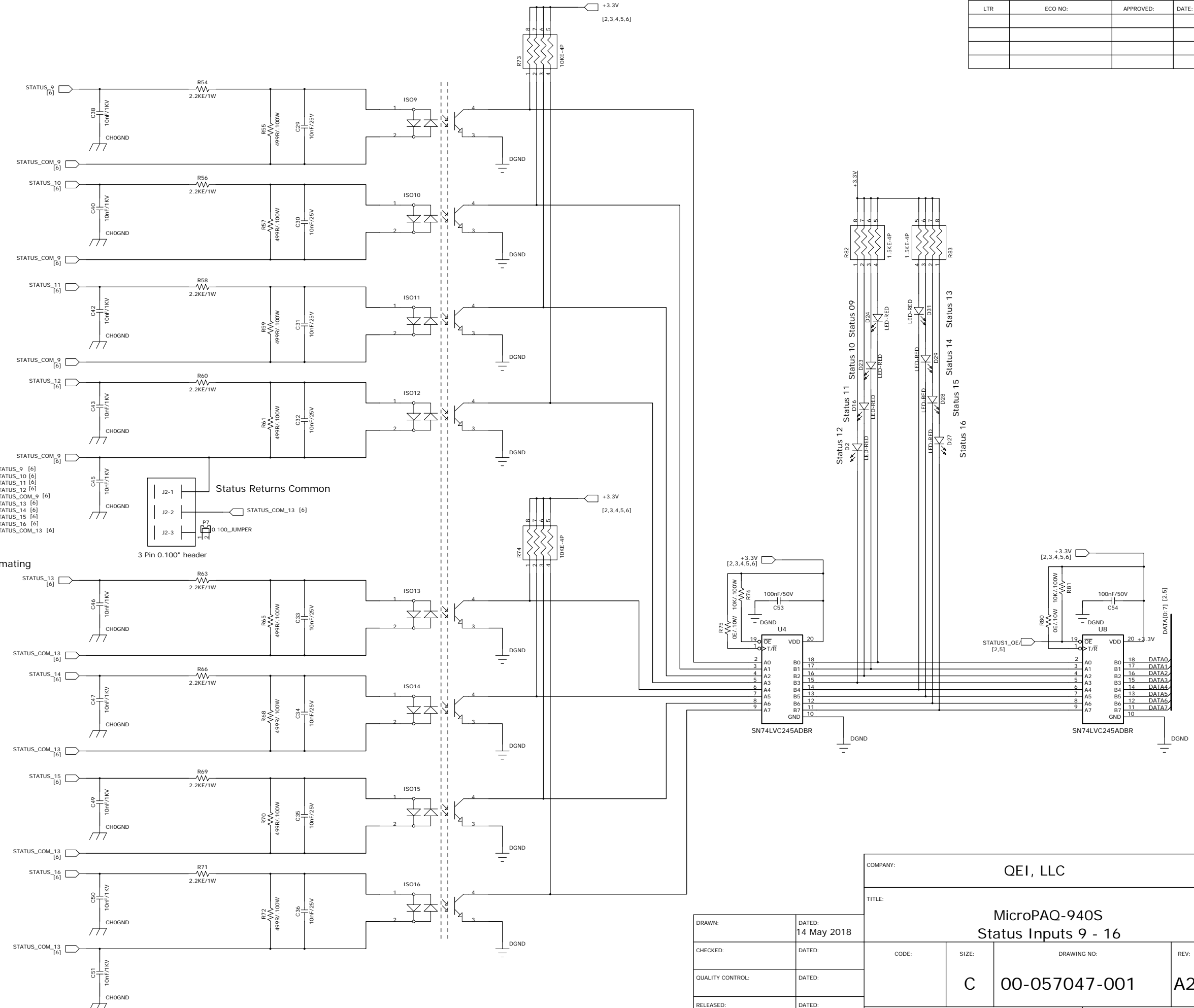
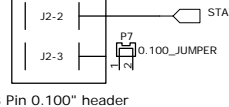
Status Inputs 9 - 16



Phx Contact 1781069 is mating connector to 1757323



Status Returns Common



COMPANY: QEI, LLC			
TITLE: MicroPAQ-940S Status Inputs 9 - 16			
CODE:	SIZE: C	DRAWING NO: 00-057047-001	REV: A2
SCALE:		SHEET: 6 of 6	

DRAWN:	DATED: 14 May 2018
CHECKED:	DATED:
QUALITY CONTROL:	DATED:
RELEASED:	DATED:

D

D

C

C

B

B

A

A