

## **IT6161 for NXP Demo board user guide**

**Version: 0.9**

**Date:10/22/2019**

**By: John Yen**

**Operation Step:**

1. Set NXP DSI to monitor connection, turn on 8MMini platform, the android OS will light on HDMI monitor.
2. According I2C bus control method to choose jumper setting for NXP\_6161 demo board.
3. Connect DSI source cable from NXP 8MMini platform to for NXP\_6161 demo board.(please refer below I2C connection cases)
4. Plug in DC5V jack.
5. Done. (HDMI monitor shows android OS desktop image)

**Connect I2C bus to NXP 6161 demo board cases as below**

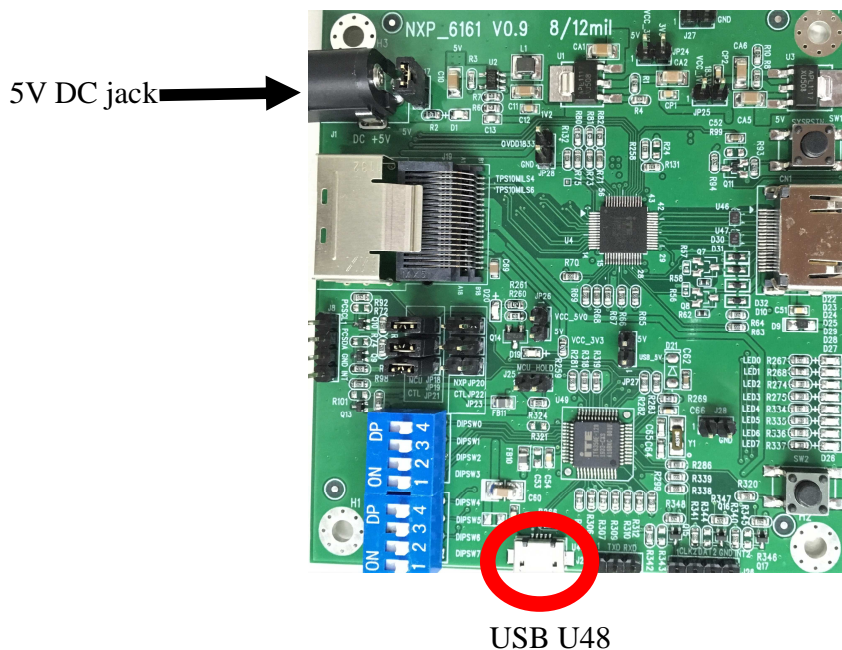
CASE I: Connect I2C bus from external FRDM-K64F board. (Ref. page 3)

CASE II: Connect I2C bus from on board MCU. (Ref. page 4)

CASE III: Connect I2C bus from NXP 8MMini platform (directly control by 8MMini platform). (Ref. page 5)

**On board MCU update:**

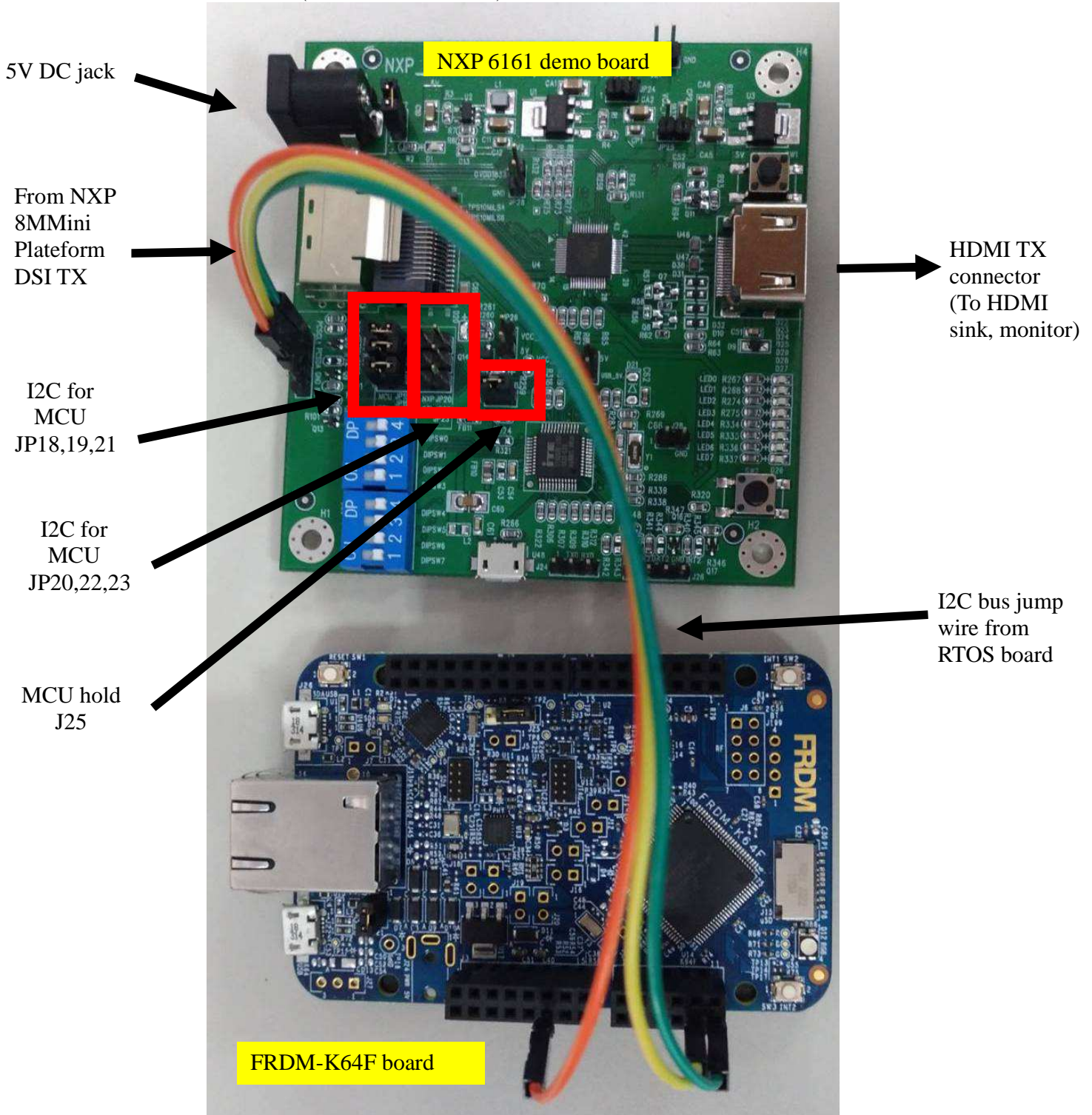
1. Connect USB cable from Laptop computer to demo board U48.
2. Connect DC 5V jack to demo board
3. Double click update program to update 6350 on board MCU.



**CASE I: Connect I2C bus from External RTOS board**

Jumper setting:

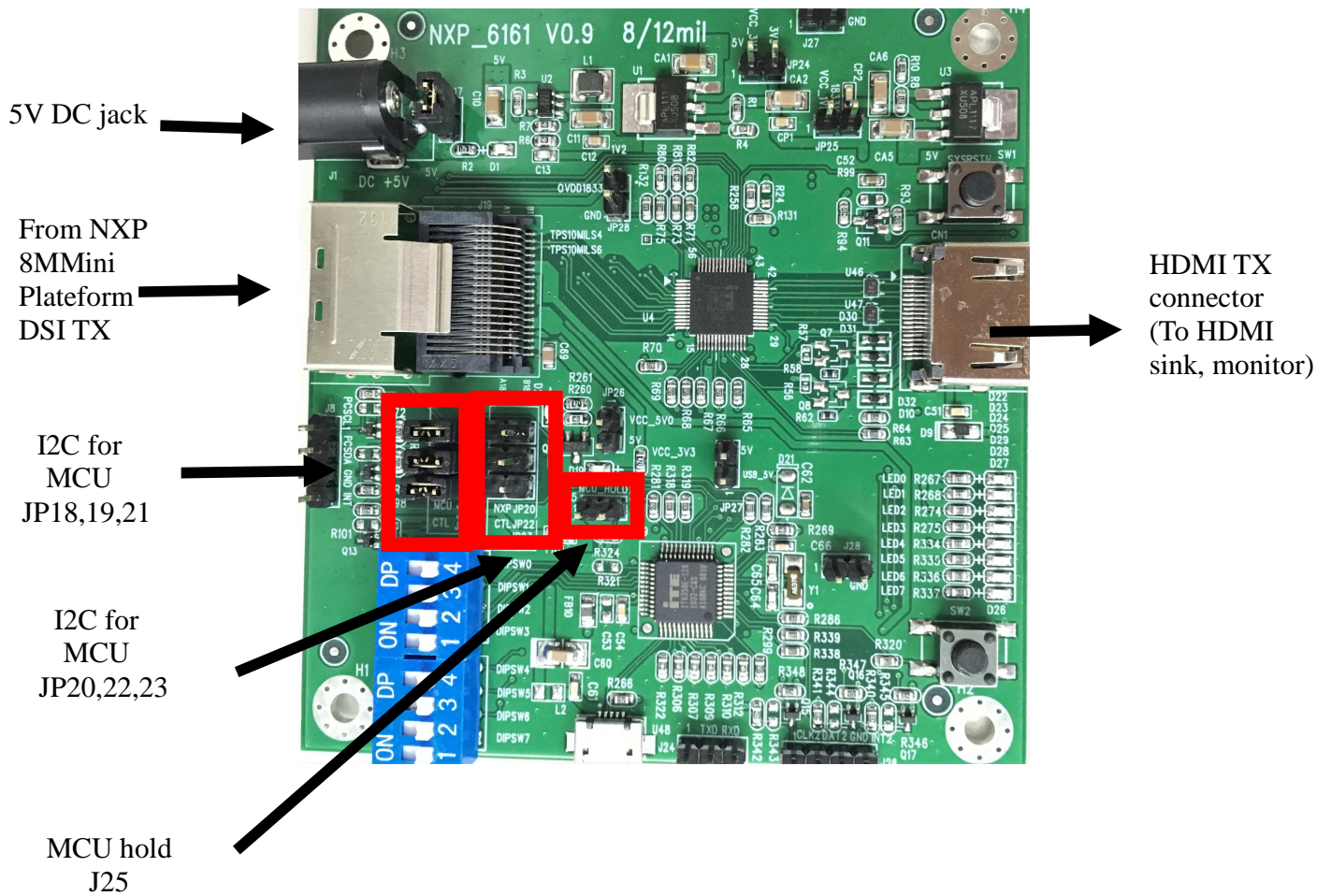
1. JP18,19,21 short.
2. JP20,22,23 open
3. J25 short.(hold MCU firmware)



**CASE II: Connect I2C bus from on board MCU.**

Jumper setting:

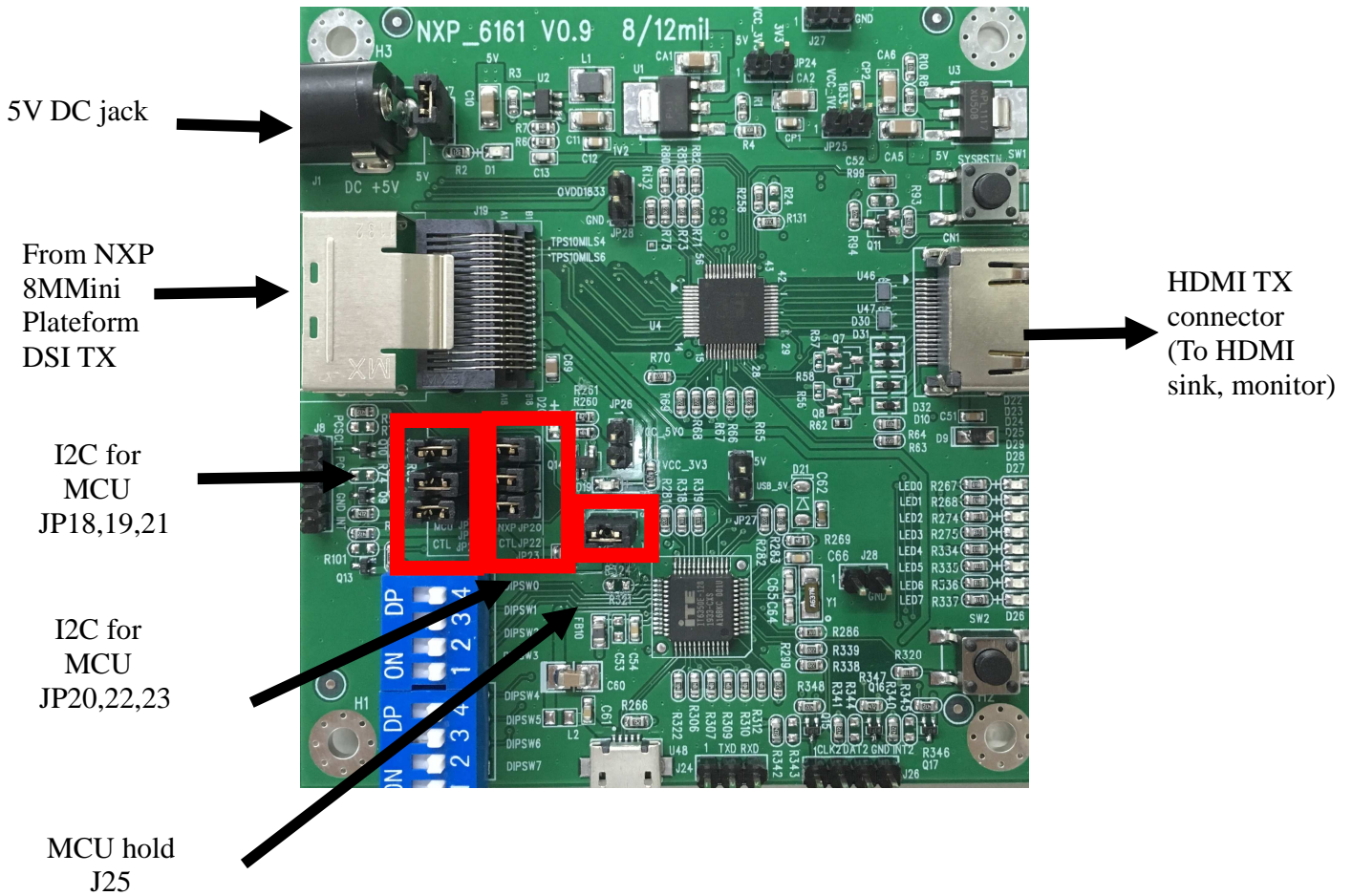
1. JP18,19,21 short.
2. JP20,22,23 open
3. **J25 Open.**(Do not hold MCU firmware)



**CASE III: Connect I2C bus from NXP 8MMini platform (directly control by 8MMini platform).**

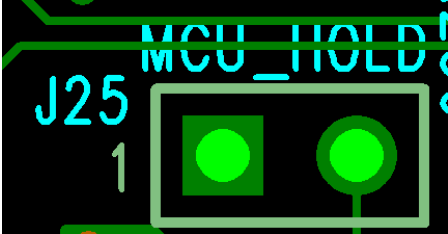
Jumper setting:

1. JP18,19,21 short.
2. JP20,22,23 short
3. J25 **short**.(Hold MCU firmware)



**HOLD MCU strapping:**

1. If need to access I2C bus, please hold MCU operation advance.
2. Short J25 jumper for hold MCU operation.



**I2C control bus pin assignment:**

