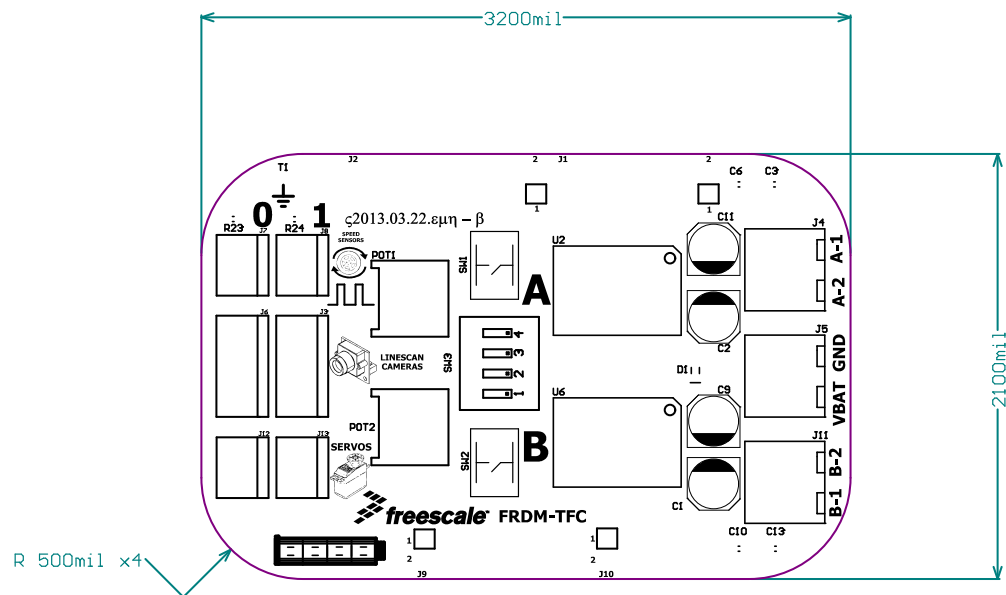


Technical Point of Contact: Eli Hughes ehughes@wavenumber.net
Route to Overall Shape on Board Outline Layer
2-LAYER PCB .063" Thickness
Black Solder Mask - Both Sides
White Legend (LPI Process)
1oz Copper - Top/Bottom Layers
Min Hole:12mil
Min Trace/Space: 6mil
Holes: 1127
Gerbers in RS-274x 2.5 Format
NC Drill in 2.5 Format Trailing Zeros Suppressed



Gerber Files / Stackup		Polarity
.GTL	Top Copper	Positive
.GBL	Bottom Copper	Positive
.GTO	TOP SILKSCREEN	Positive
.GTS	TOP SOLDERMASK	Positive
.GTP	Top Paste	Positive
.GBO	BOTTOM SILKSCREEN	Positive
.GBS	BOTTOM SOLDERMASK	Positive
.GBP	Bottom Paste	Positive
.TXT	NC Drill	Positive
.GM5	BOARD OUTLINE	Positive