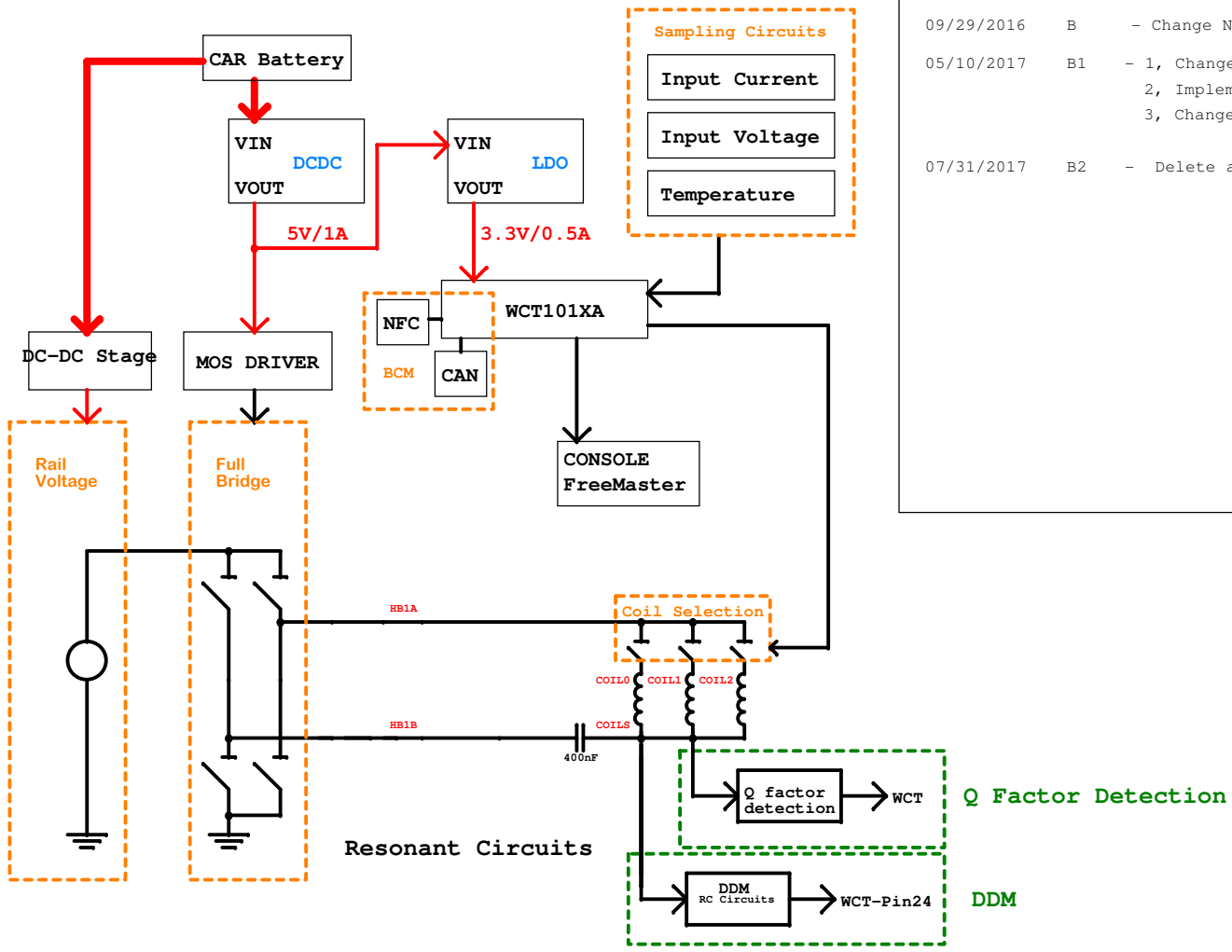


System Block Diagram

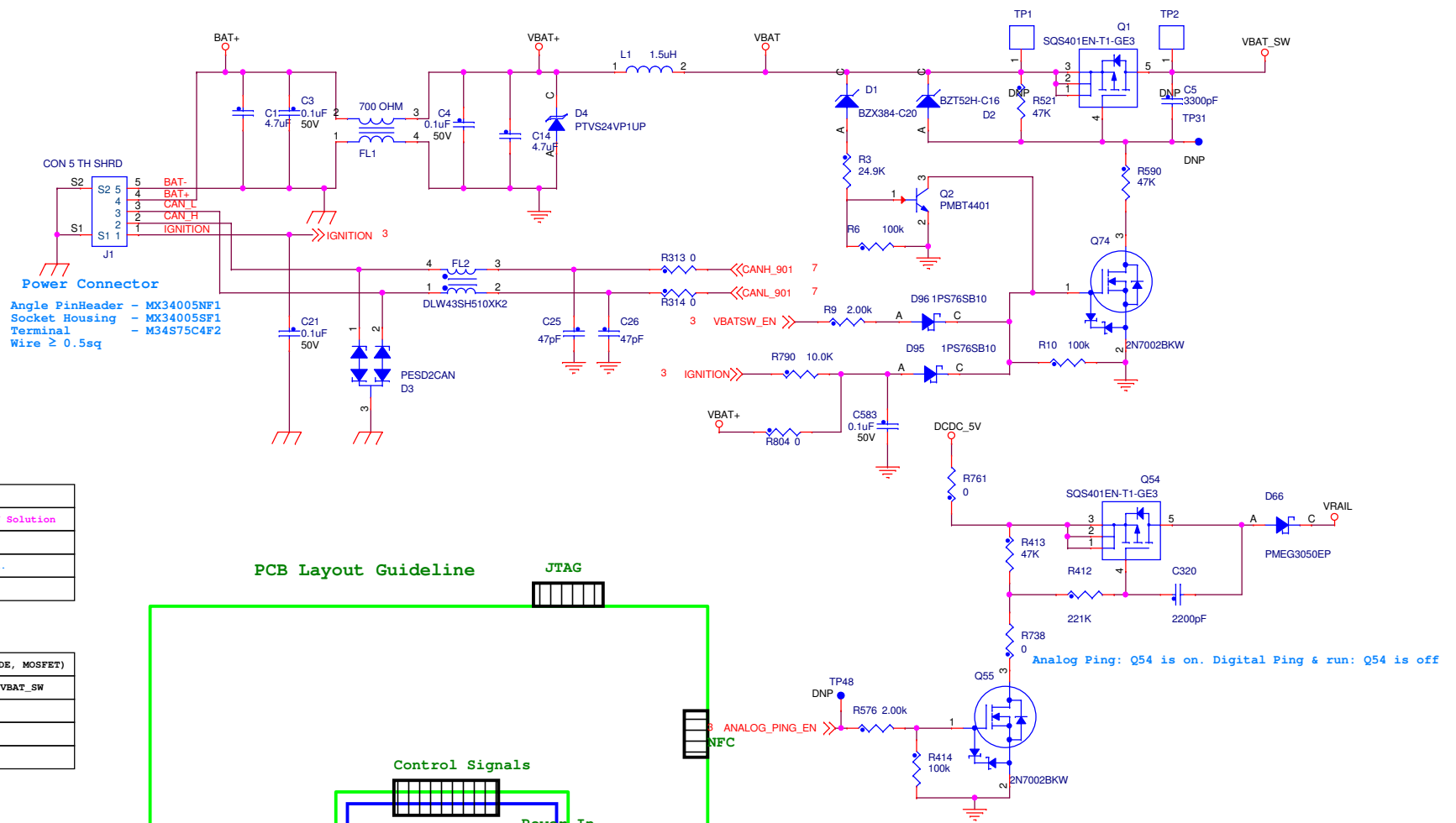


REVISION HISTORY

DATE	REV	CHANGE DESCRIPTION
05/25/2016	X1	- Initial Design.
06/16/2016	A	- Update part status for release.
09/29/2016	B	- Change NFC IC to NCF3340 and reserve three DC/DC converters.
05/10/2017	B1	- 1, Change to series L-C resonant tank; 2, Implement low standby power consumption control; 3, Change the filter and resonant caps to smaller package parts;
07/31/2017	B2	- Delete analog DCDC converter;



ICAP Classification: CP: ___ IUC: X PUBI: ___		
Drawing Title: WCT-15WTXAUTO		
Page Title: Revision History		
Size B	Document Number SCH-29323 PDF: SPF-29323	Rev B2
Date: Tuesday, August 01, 2017	Sheet 1	of 9

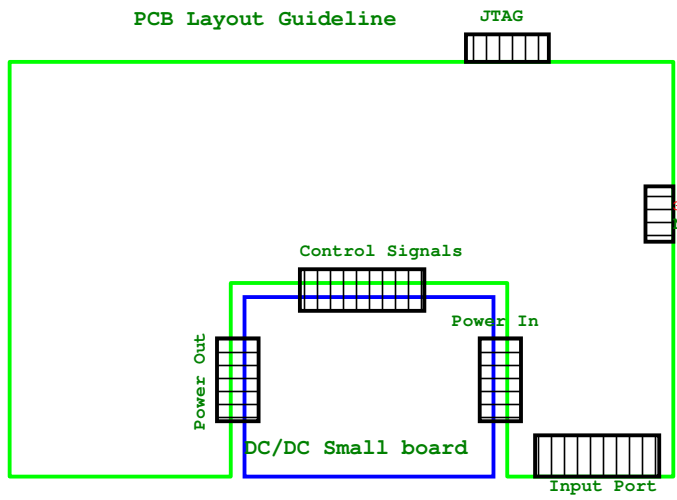


Power Connector


Angle PinHeader - MX34005NF1
 Socket Housing - MX34005SF1
 Terminal - M34S75C4F2
 Wire ≥ 0.5sq

Color	Description
Purple	Different Power+CAN Solution
Green	Reserved Parts
Blue	General description.
Red	Rule

DC Voltage Derating (CAP, DIODE, MOSFET)	
≥ 50V	BAT+, VBAT+, VBAT, VBAT_SW
≥ 25V	VRAIL, VRAILA
≥ 16	VDRIVE
≥ 6.3	3.3V



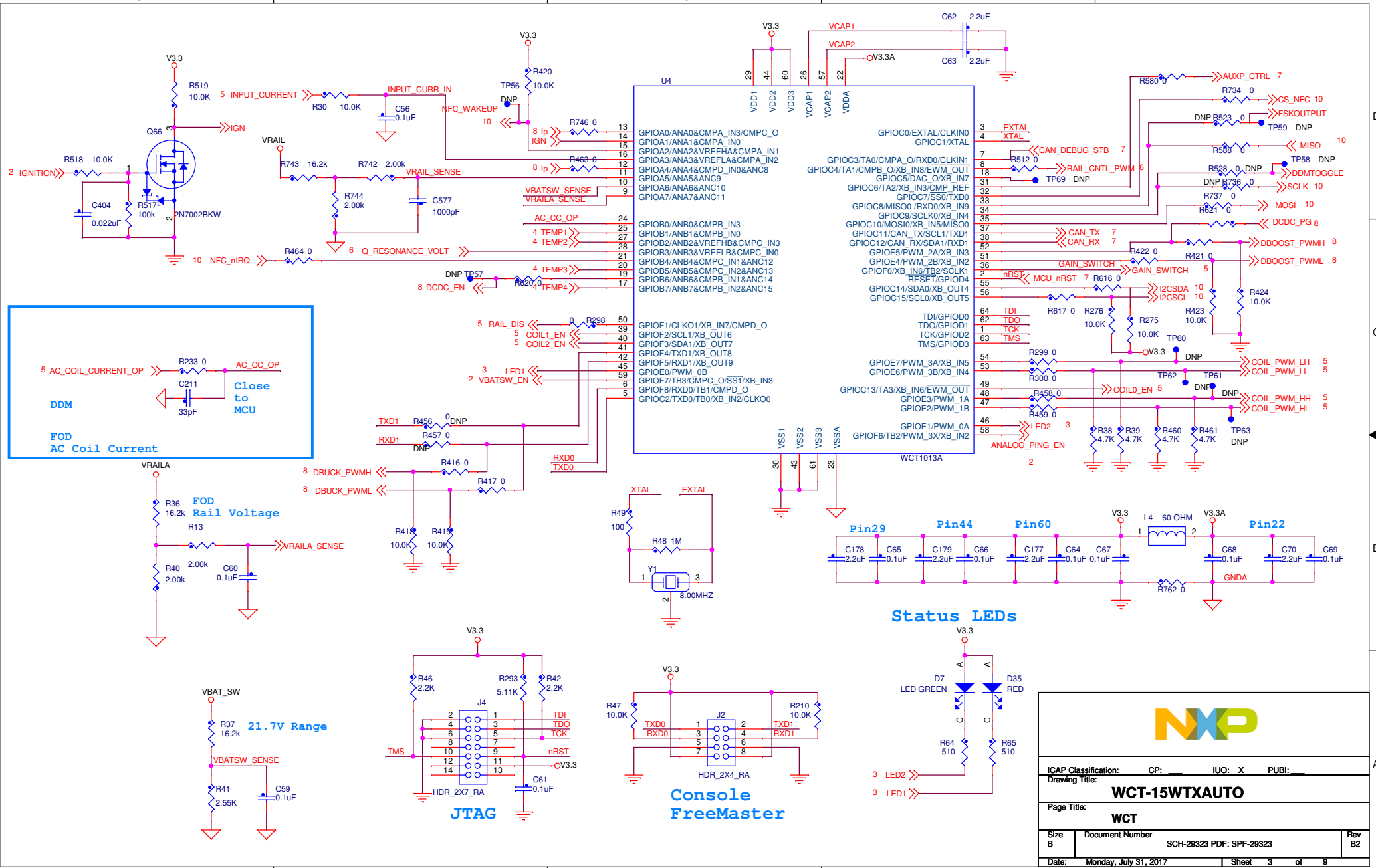
Solder the two boards together.



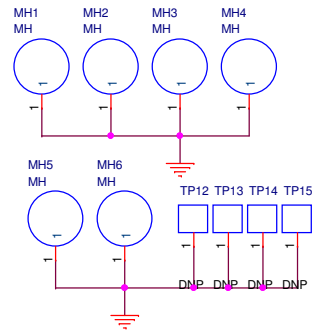
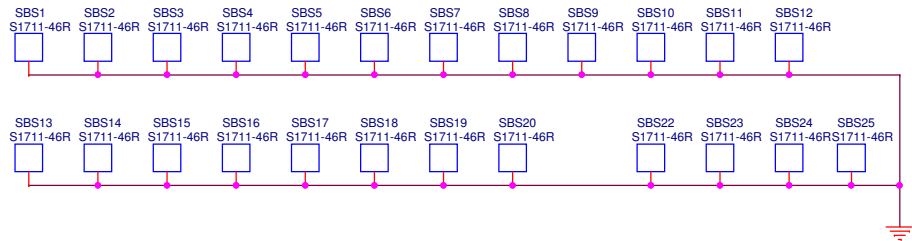
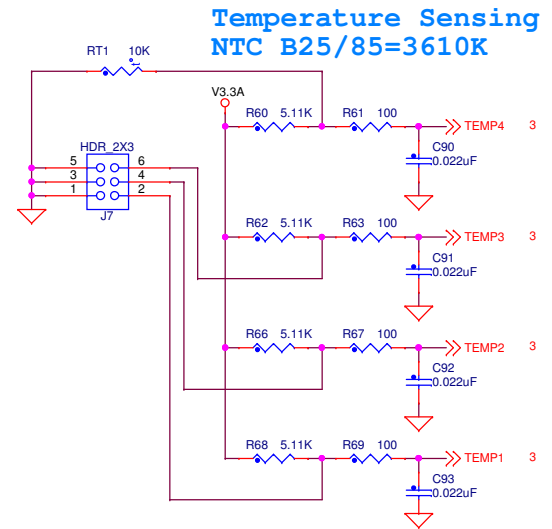
ICAP Classification: CP: ___ IUO: X PUBI: ___
 Drawing Title: **WCT-15WTXAUTO**
 Page Title: **Input Circuits**

Size B	Document Number SCH-29323 PDF: SPF-29323	Rev B2
Date: Monday, July 31, 2017	Sheet 2 of 9	

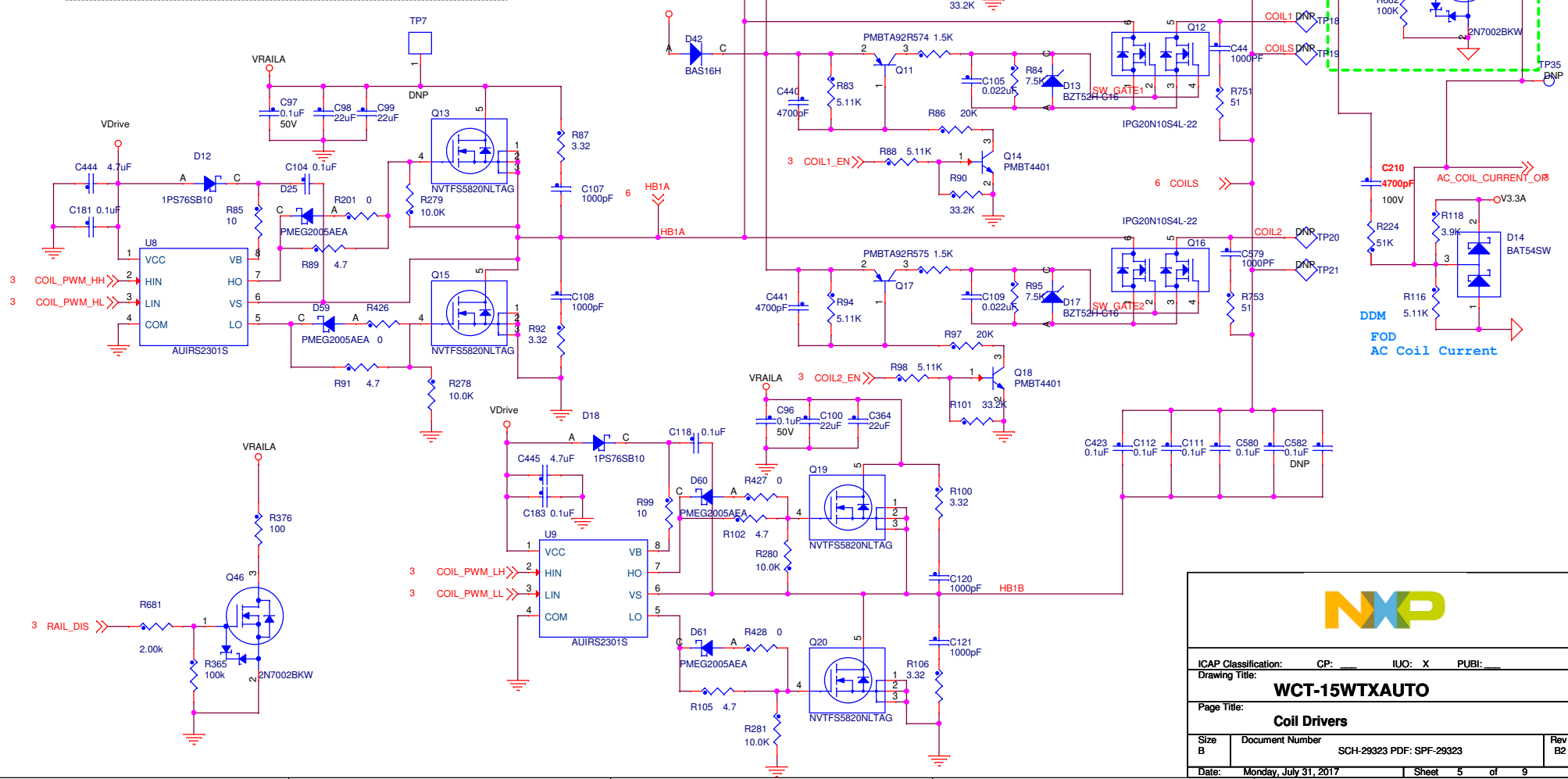
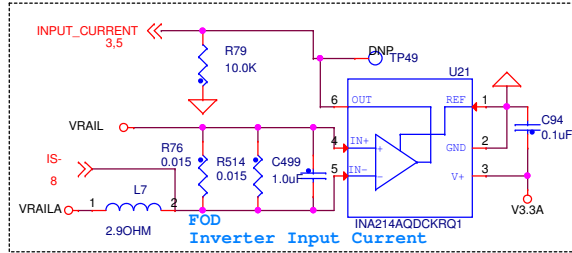
Analog Ping: Q54 is on. Digital Ping & run: Q54 is off



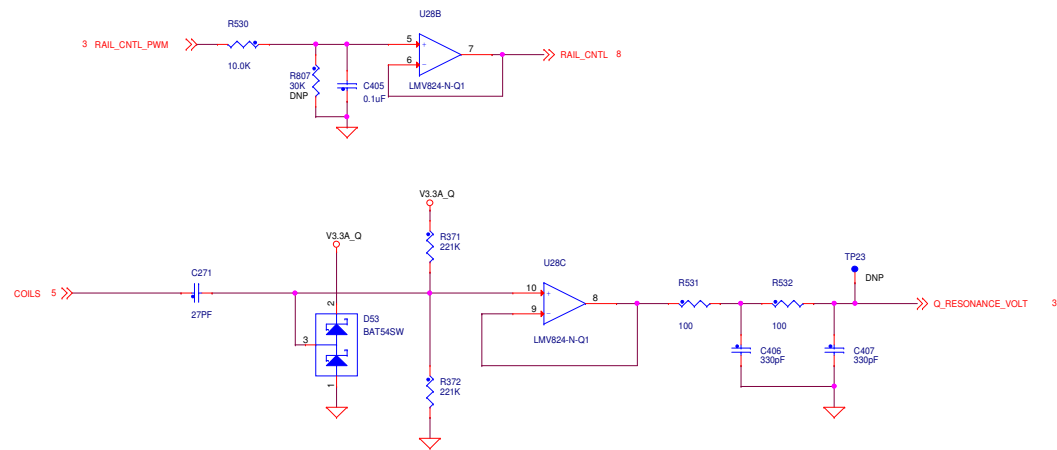
ICAP Classification:	CP: _____ IUO: X PUBLI: _____
Drawing Title:	WCT-15WTXAU0
Page Title:	WCT
Size B	Document Number SCH-29323 PDF: SPF-29323
Date: Monday, July 31, 2017	Sheet 3 of 9
	Rev B2



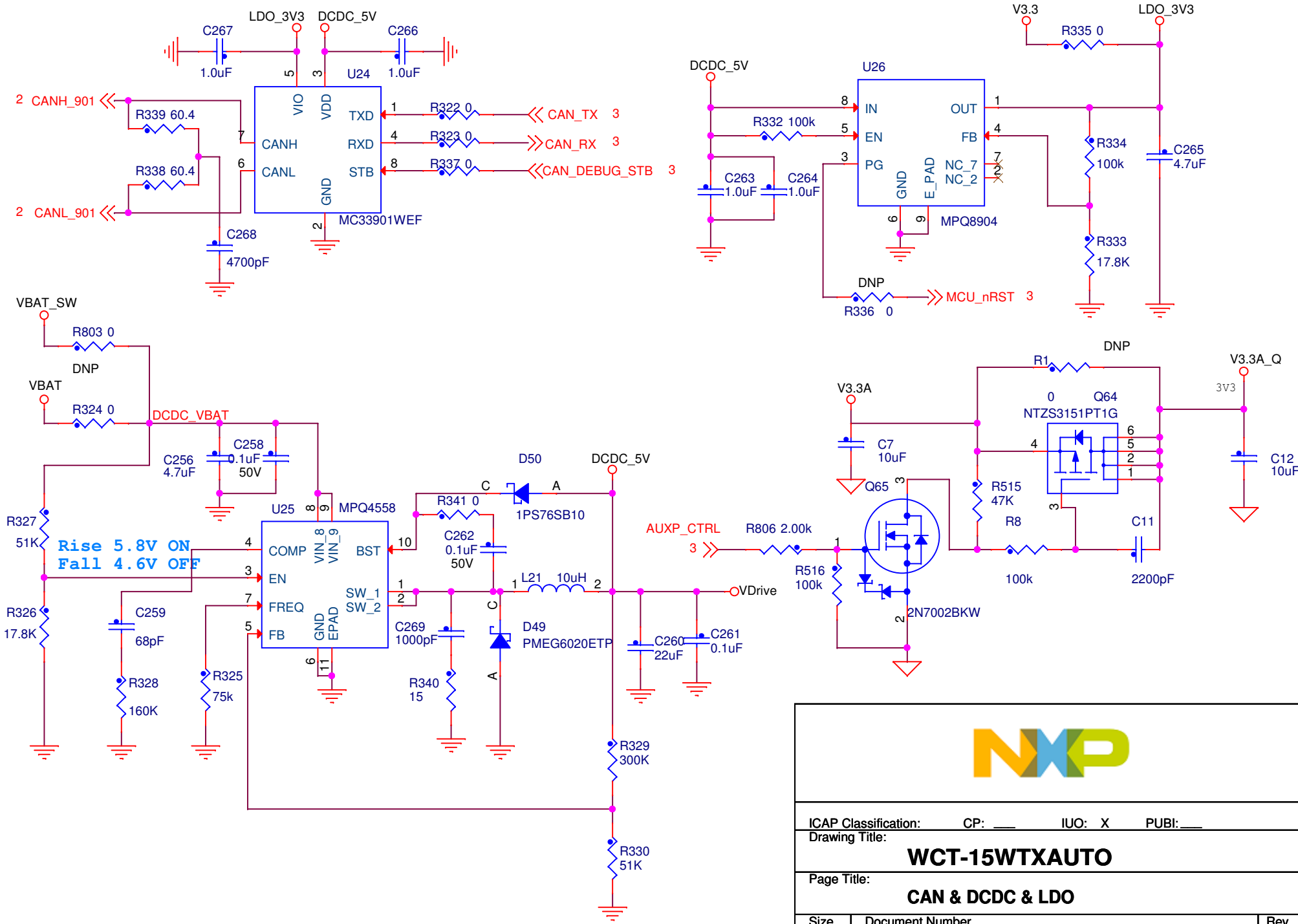
ICAP Classification:		CP: _____	IUO: X	PUBI: _____
Drawing Title: WCT-15WTXAUTO				
Page Title: Interfaces				
Size B	Document Number	SCH-29323 PDF: SPF-29323		Rev B2
Date:	Monday, July 31, 2017	Sheet	4	of 9



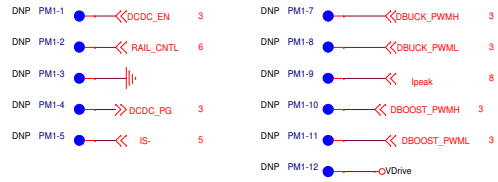
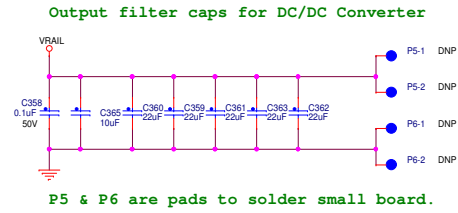
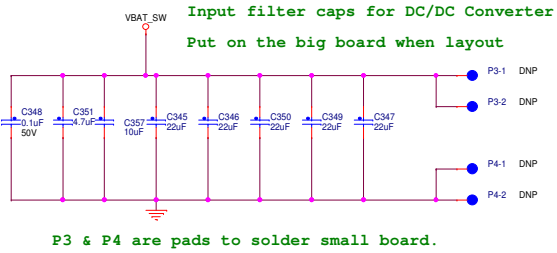
ICAP Classification:	CP:	IUO:	X	PUBI:
Drawing Title:	WCT-15WTXAUTO			
Page Title:	Coil Drivers			
Size B	Document Number	SCH-29323 PDF: SPF-29323		Rev B2
Date:	Monday, July 31, 2017	Sheet	5	of 9



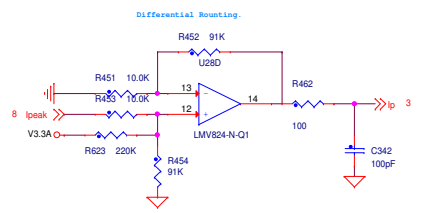
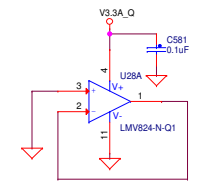
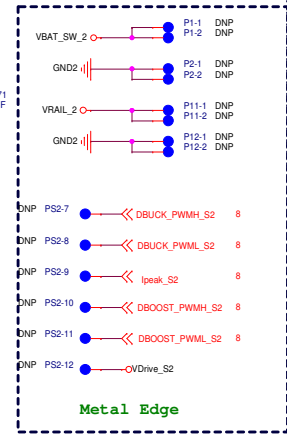
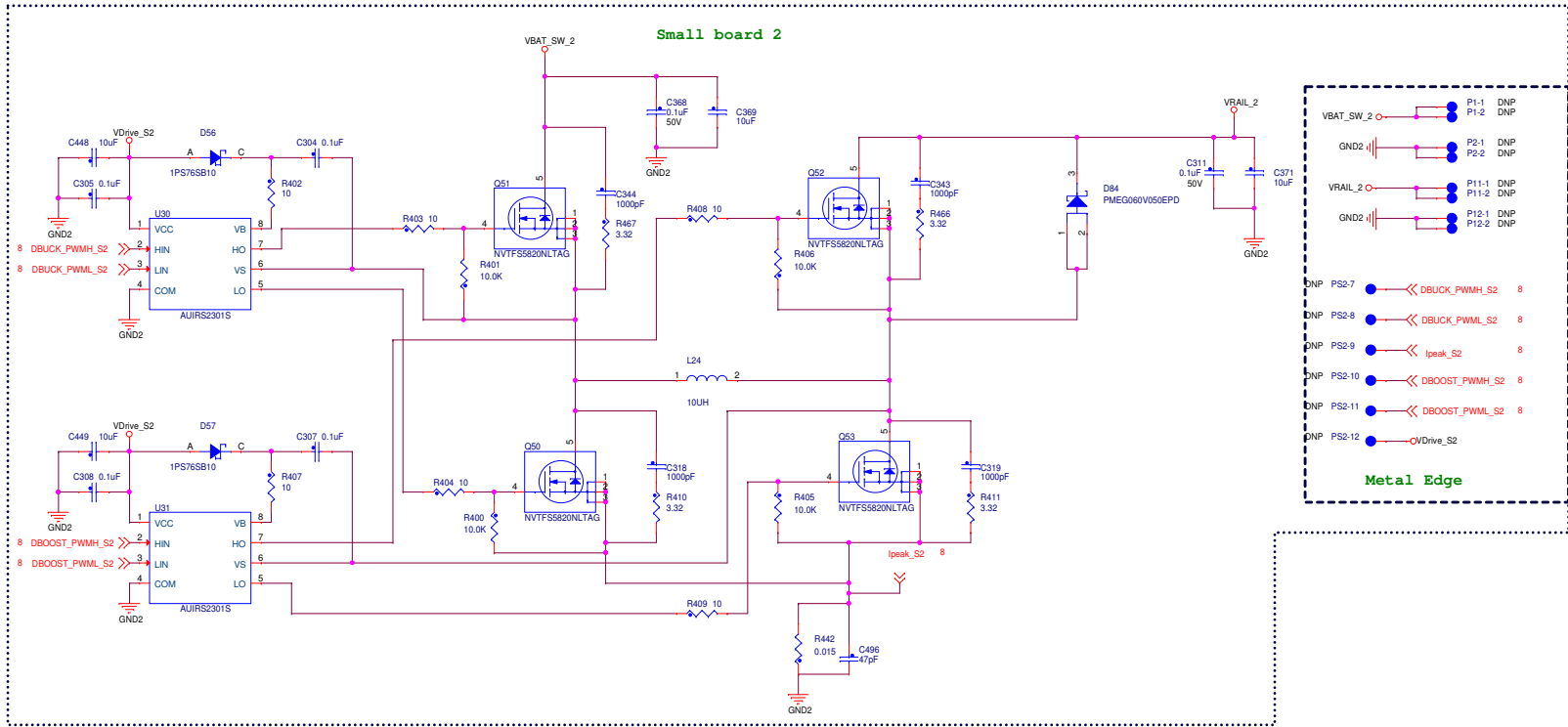
ICAP Classification:		GP:	IUG: X	PUBL:
Drawing Title:				
WCT-15WTXAUTO				
Page Title:				
Q Factor Detection				
Size	Document Number			Rev
C	SCH-29323 PDF: SPF-29323			B2
Date:	Monday, July 31, 2017	Sheet	6	of 9



ICAP Classification: CP: ___ IUO: X PUBL: ___		
Drawing Title: WCT-15WTXAUTO		
Page Title: CAN & DCDC & LDO		
Size A	Document Number SCH-29323 PDF: SPF-29323	Rev B2
Date: Monday, July 31, 2017	Sheet 7 of 9	



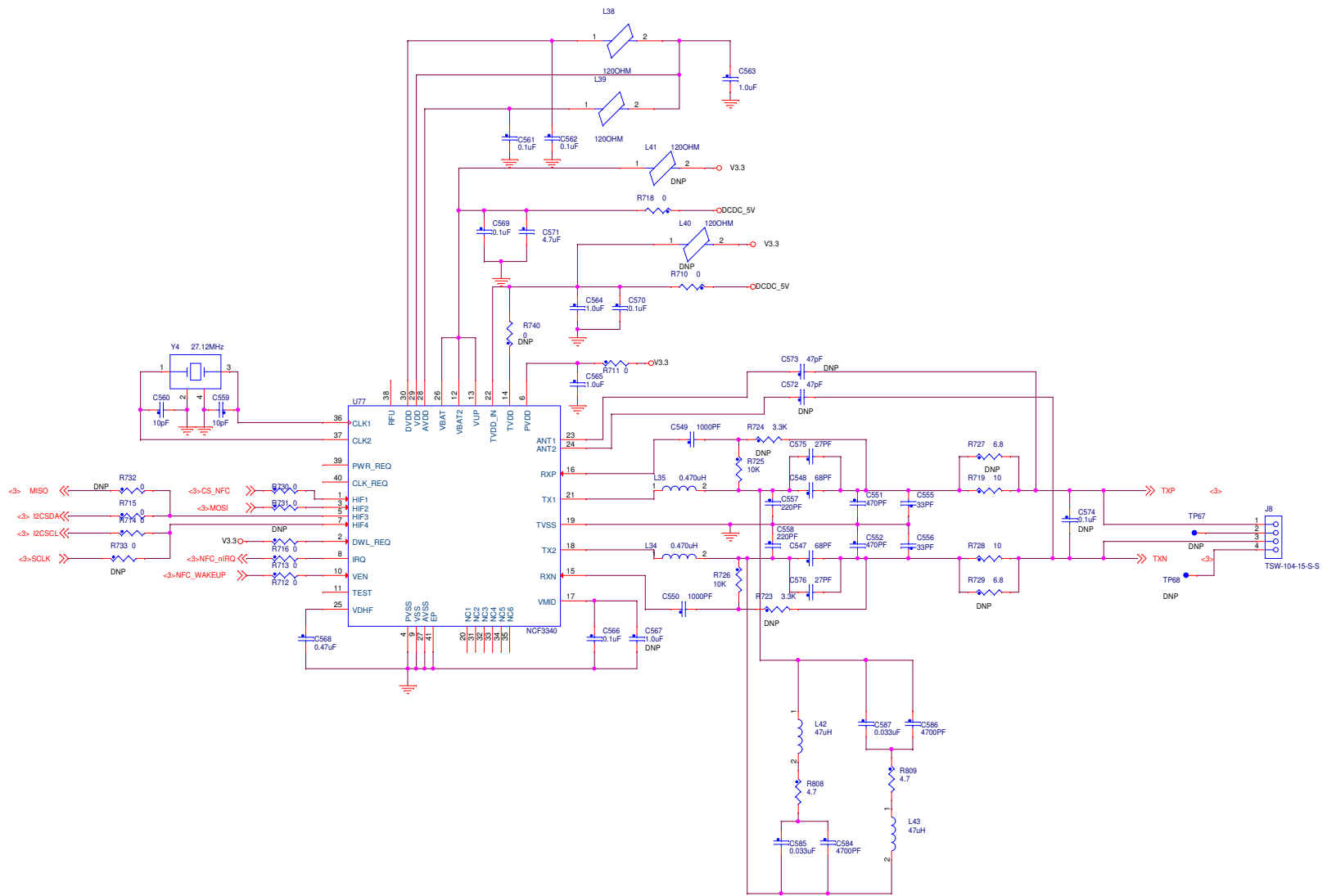
Metal Edge



NXP

ICAP Classification: CP: IUC: X PUB: _____
 Drawing Title: **WCT-15WTXAUTO**
 Page Title: **Digital DCDC**

Size C	Document Number SCH-29323 PDF: SPF-29323	Rev B2
Date: Monday, July 31, 2017	Sheet 8	of 9



ICAP Classification: GP:		IUC: X PUBL:	
WCT-15WTXAU0			
Page Title: NFC			
Size C	Document Number	SCH-29323 PDF: SPF-29323	Rev B2
Date: Monday, July 31, 2017		Sheet 9 of 9	