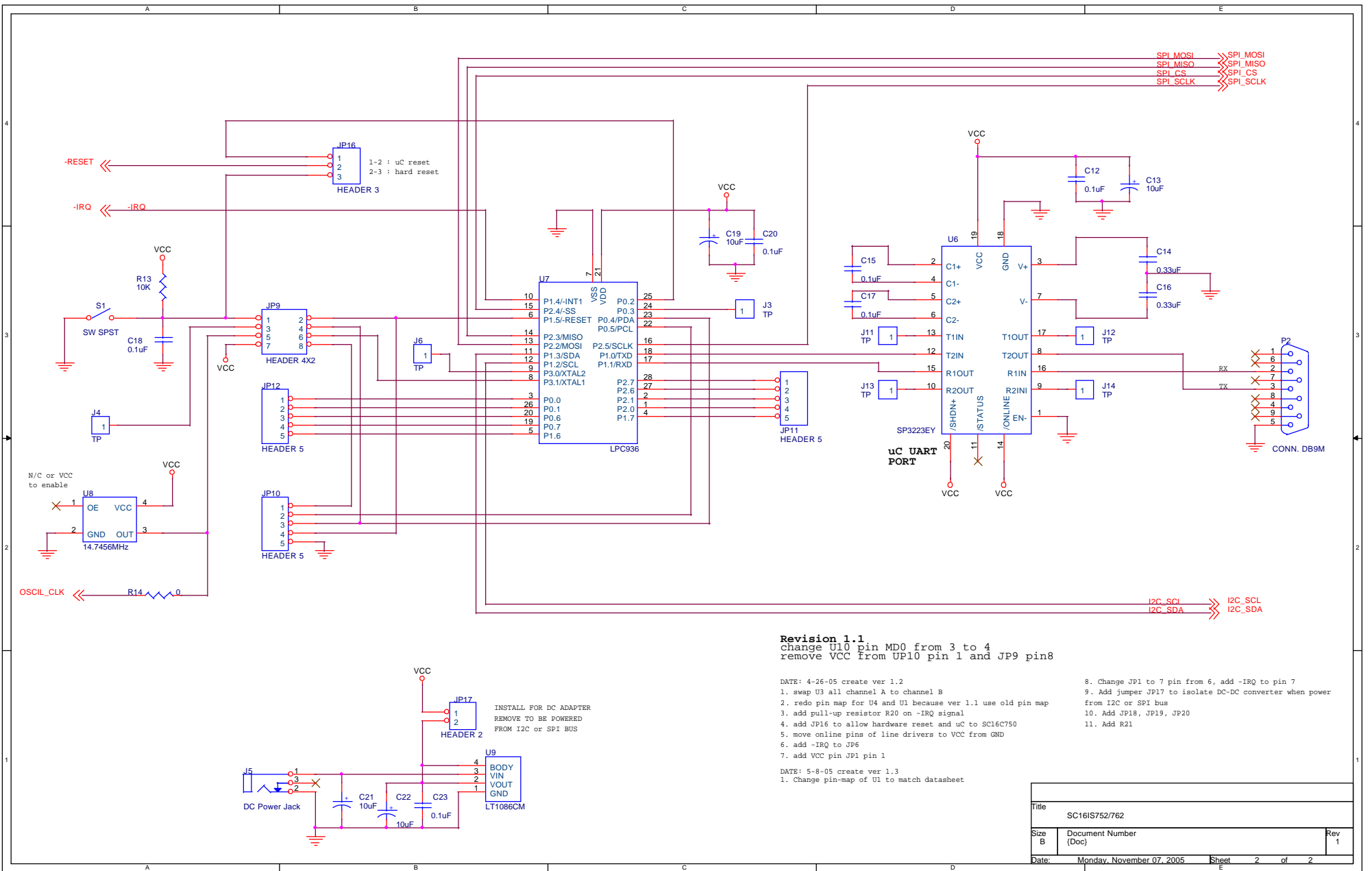


1 - 2 ==> 750/760 TRANSMIT WITHOUT-RTS INVERT  
 2 - 3 ==> 750/760 TRANSMIT WITH -RTS INVERT



**Revision 1.1**  
 change U10 pin MD0 from 3 to 4  
 remove VCC from UP10 pin 1 and JP9 pin8

- DATE: 4-26-05 create ver 1.2
1. swap U3 all channel A to channel B
  2. redo pin map for U4 and U1 because ver 1.1 use old pin map
  3. add pull-up resistor R20 on -IRQ signal
  4. add JP16 to allow hardware reset and uC to SC16C750
  5. move online pins of line drivers to VCC from GND
  6. add -IRQ to JP6
  7. add VCC pin JP1 pin 1
- DATE: 5-8-05 create ver 1.3
1. Change pin-map of U1 to match datasheet

8. Change JP1 to 7 pin from 6, add -IRQ to pin 7
9. Add jumper JP17 to isolate DC-DC converter when power from I2C or SPI bus
10. Add JP18, JP19, JP20
11. Add R21

Title		
SC16IS752/762		
Size	Document Number	Rev
B	(Doc)	1
Date:	Monday, November 07, 2005	Sheet 2 of 2