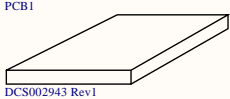


REV	CHANGE #	DESCRIPTION	APPRVD
1	1	Initial Release	fy

SMSYNCH Peliter Driver w/ CAN Buss
 "SYMSYNCH CC_DRIVE R3"

ASSEMBLY #: DCS002944

RAW PCB #: DCS002943



WARNING - This document contains technical data whose export is restricted by the Arms Export Control Act (Title 22, U.S.C., Sec 2751, et seq.) or the Export Administration Act of 1979, as amended, Title 50, U.S.C., App. 2401 et seq. Violations of these export laws are subject to severe criminal penalties. Disseminate in accordance with provisions of DoD Directive 5230.25.



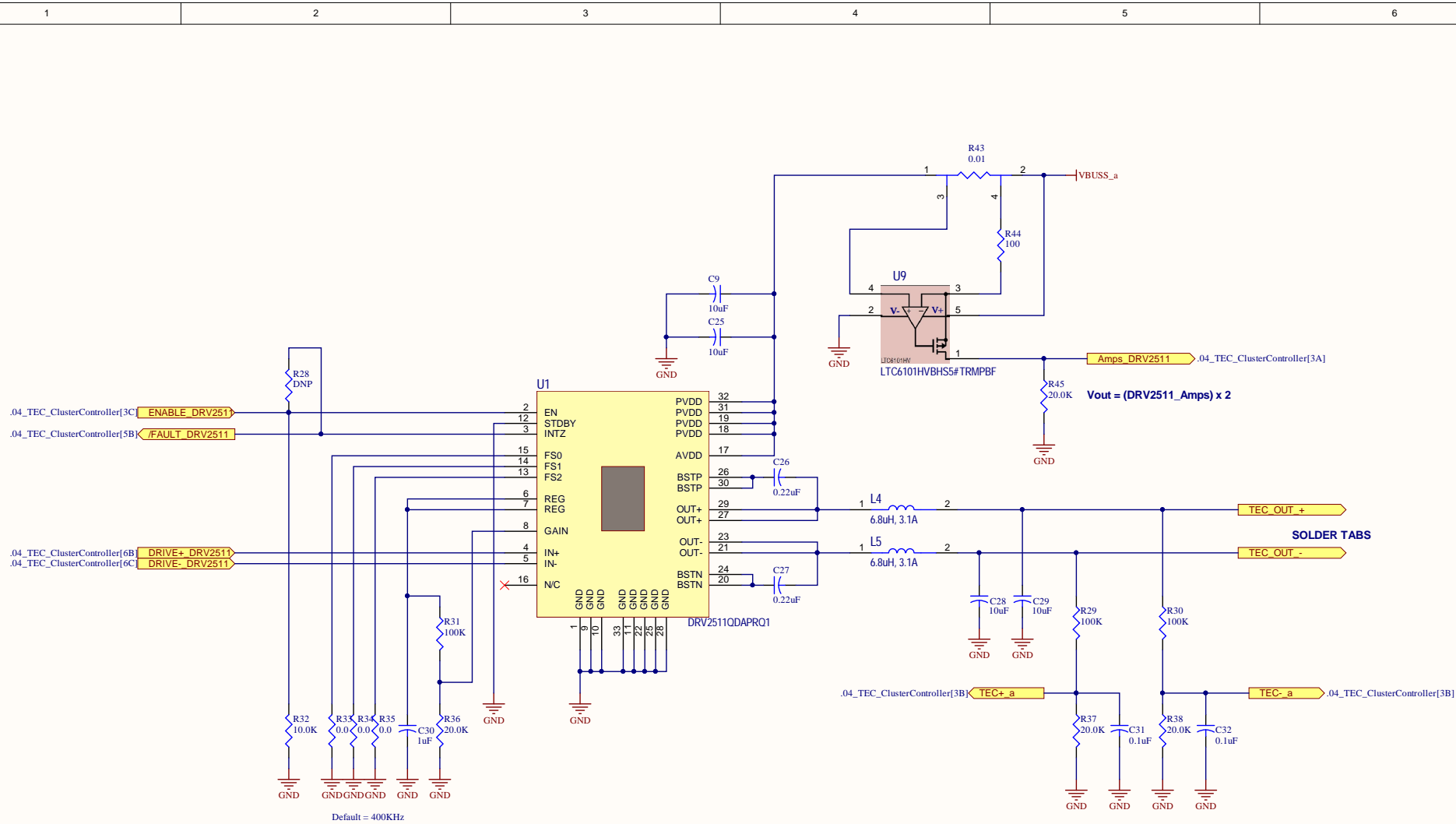
DCS Corporation
 295 Foster Street
 Littleton, MA 01460

Title
SMSYNCH Peliter Driver w/CAN

Size B	FCSM No.	DWG No. DCS002942	Rev 1
--------	----------	-----------------------------	-----------------

Scale NA	Date: 06/08/2020	Sheet 1 of 5
-------------	---------------------	-----------------

PROPRIETARY INFORMATION



WARNING - This document contains technical data whose export is restricted by the Arms Export Control Act (Title 22, U.S.C., Sec 2751, et seq.) or the Export Administration Act of 1979, as amended, Title 50, U.S.C., App. 2401 et seq. Violations of these export laws are subject to severe criminal penalties. Disseminate in accordance with provisions of DoD Directive 5230.25.

Title			
SMSYNCH Peltier Driver w/CAN			
Size	Number	Revision	
B	DCS002942	1	
Date	06/08/2020		Sheet 2 of 5

PROPRIETARY INFORMATION

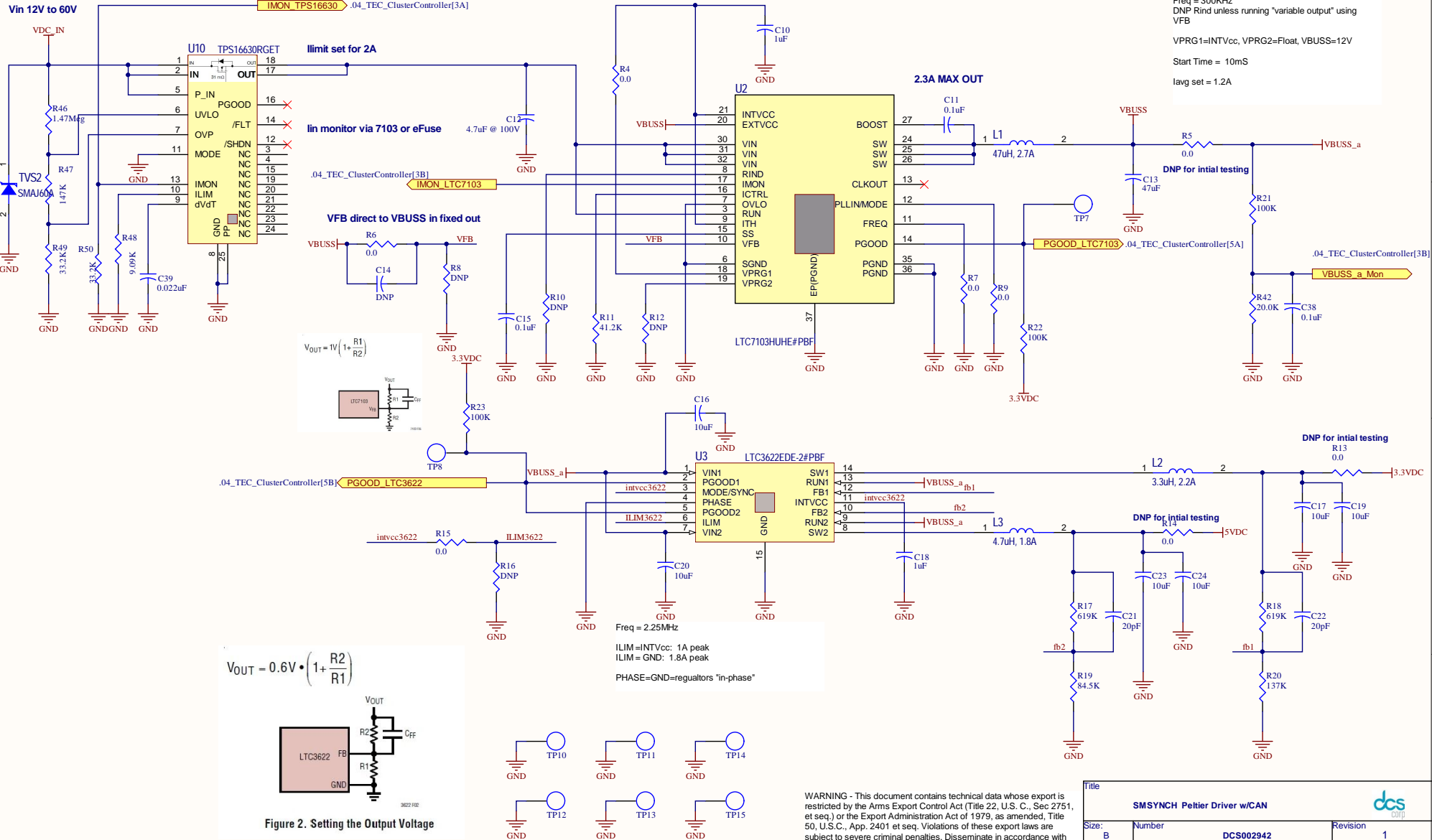
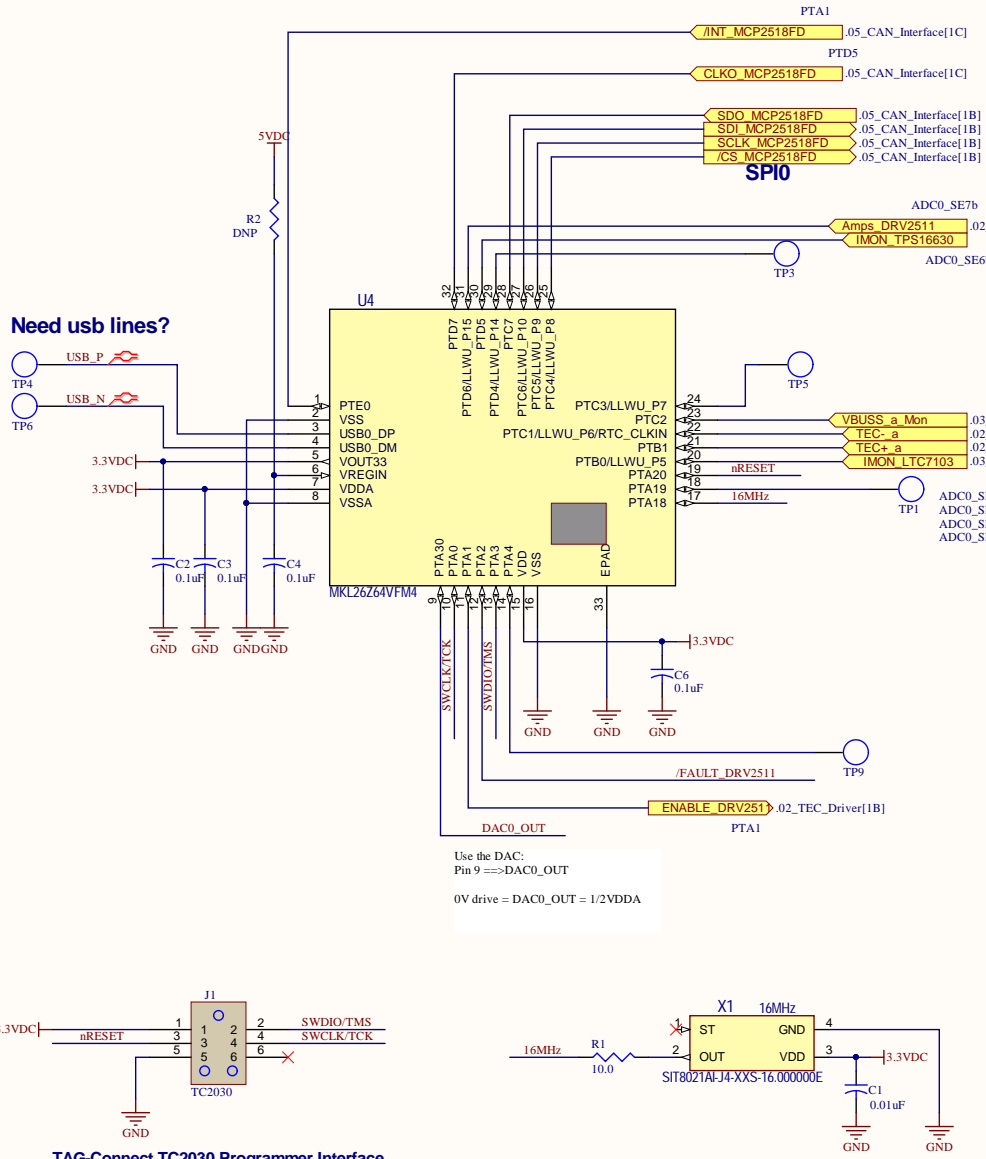


Figure 2. Setting the Output Voltage

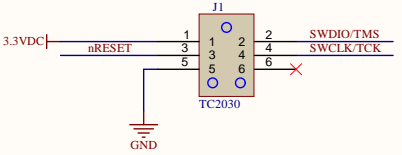
Title		SMSYNCH Peltier Driver w/CAN		Revision		1	
Size:	B	Number:	DCS002942	Revision:	1		
Date:	06/08/2020	Sheet:	3 of 5				

PROPRIETARY INFORMATION

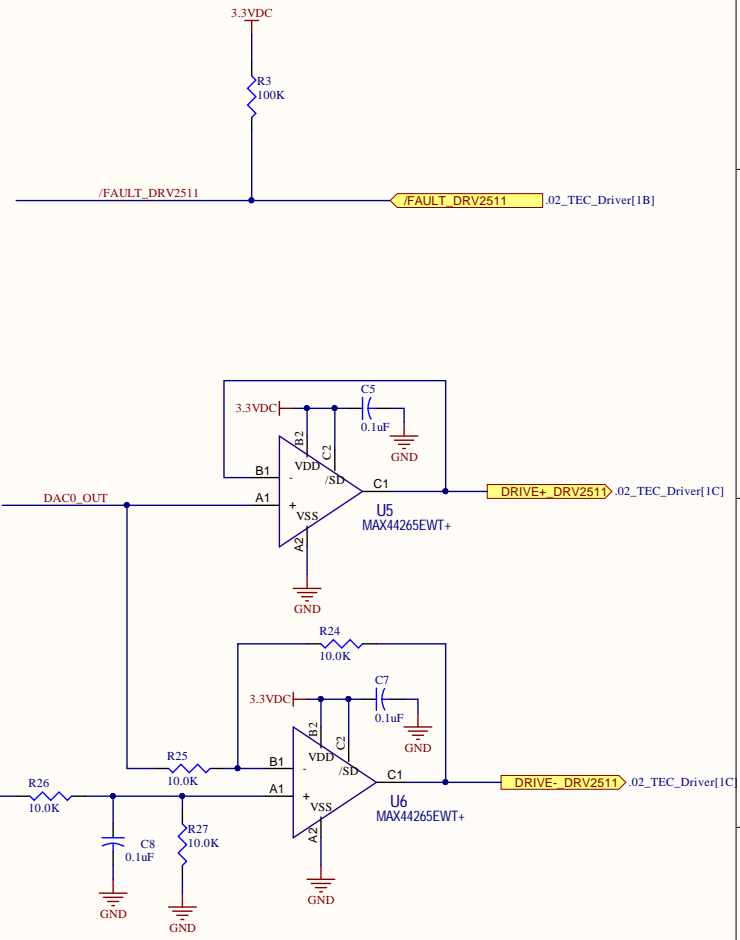
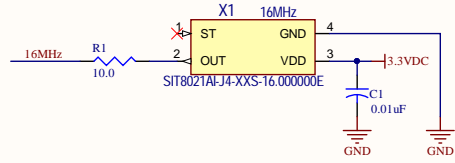


KL26-32QFN:
 Pin 25 ==> SPI0_PCS0
 Pin 26 ==> SPI0_SCK
 Pin 27 ==> SPI0_MOSI (Data OUT)
 Pin 28 ==> SPI0_MISO (Data IN)

Use the DAC:
 Pin 9 ==> DAC0_OUT
 0V drive = DAC0_OUT = 1/2VDDA



TAG-Connect TC2030 Programmer Interface



WARNING - This document contains technical data whose export is restricted by the Arms Export Control Act (Title 22, U.S.C., Sec 2751, et seq.) or the Export Administration Act of 1979, as amended, Title 50, U.S.C., App. 2401 et seq. Violations of these export laws are subject to severe criminal penalties. Disseminate in accordance with provisions of DoD Directive 5230.25.

Title			
SMSYNCH Peltier Driver w/CAN			
Size:	Number:	Revision:	
B	DCS002942	1	
Date:	06/08/2020		Sheet 4 of 5

PROPRIETARY INFORMATION

