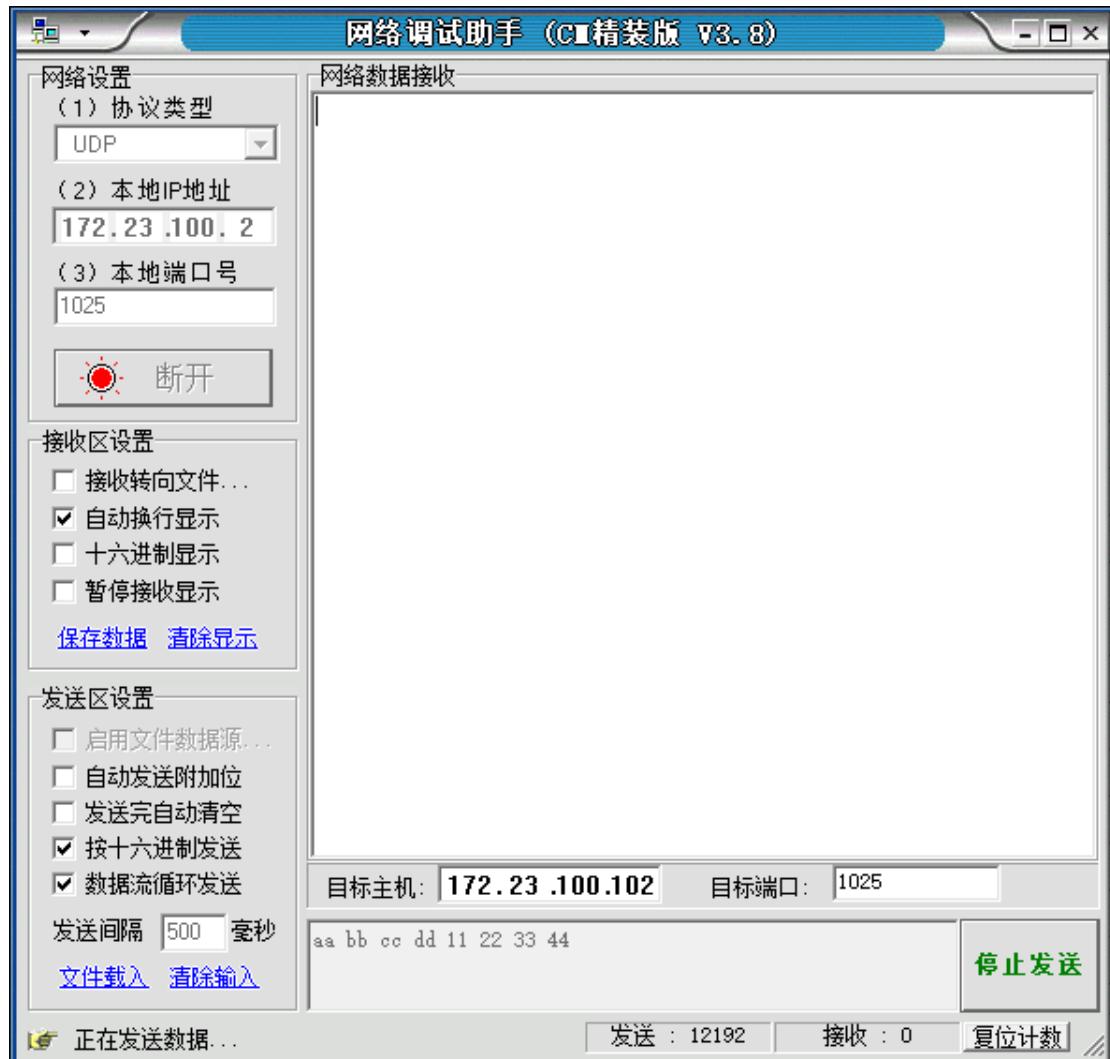


# 以太网调试阶段报告

各位好：

MPC5748G 的以太网调试已经得到初步的进展，例程 enet\_udp-1211 能够同时实现收发 udp 数据。

**调试方法：**使用网络调试助手调试，板子 IP：172.23.100.102，PC 的 ip：172.23.100.2，使用端口为 1025



正在捕获 以太网

文件(F) 编辑(E) 视图(V) 跳转(G) 捕获(C) 分析(A) 统计(S) 电话(Y) 无线(W) 工具(T) 帮助(H)

应用显示过滤器 ... <Ctrl-L>/>

No.	Time	Source	Destination	Protocol	Length	Info
16274	204.816586	172.23.100.102	172.23.100.2	UDP	60	1025→1025 Len=17
16275	204.816586	172.23.100.102	172.23.100.2	UDP	60	1025→1025 Len=17
16276	204.825631	172.23.100.102	172.23.100.2	UDP	60	1025→1025 Len=17
16277	204.825631	172.23.100.102	172.23.100.2	UDP	60	1025→1025 Len=17
16278	204.834668	172.23.100.102	172.23.100.2	UDP	60	1025→1025 Len=17
16279	204.834669	172.23.100.102	172.23.100.2	UDP	60	1025→1025 Len=17
16280	204.843567	172.23.100.102	172.23.100.2	UDP	60	1025→1025 Len=17
16281	204.843568	172.23.100.102	172.23.100.2	UDP	60	1025→1025 Len=17
16282	204.851475	172.23.100.2	172.23.100.102	UDP	51	1025→1025 Len=9
16283	205.169286	172.23.100.102	172.23.100.2	UDP	60	1025→1025 Len=17
16284	205.169287	172.23.100.102	172.23.100.2	UDP	60	1025→1025 Len=17
16285	205.178305	172.23.100.102	172.23.100.2	UDP	60	1025→1025 Len=17
16286	205.178305	172.23.100.102	172.23.100.2	UDP	60	1025→1025 Len=17
16287	205.187325	172.23.100.102	172.23.100.2	UDP	60	1025→1025 Len=17

> Frame 16281: 60 bytes on wire (480 bits), 60 bytes captured (480 bits) on interface 0

> Ethernet II, Src: Freescal\_22:0e:b0 (00:04:9f:22:0e:b0), Dst: LcfcHefe\_31:9d:4d (50:7b:9d:31:9d:4d)

> Internet Protocol Version 4, Src: 172.23.100.102, Dst: 172.23.100.2

> User Datagram Protocol, Src Port: 1025, Dst Port: 1025

> Data (17 bytes)

```
0000  50 7b 9d 31 9d 4d 00 04 9f 22 0e b0 08 00 45 00  P{.1.M.. ."....E.
0010  00 31 f5 4f 00 00 80 11 24 d5 ac 17 64 66 ac 17  .1.O.... $...df..
0020  64 02 04 01 04 01 00 19 00 00 48 65 6c 6c 6f 20  d..... ..Hello
0030  4d 50 43 35 37 34 38 67 21 21 00 00             MPC5748g !!..
```

程序运行时 PA7 和 PA10 都会闪烁，PA7 指示 UDP 发送，PA10 指示 UDP 接收。同时串口可以看到输出接收到的数据。

```
Serial (COM)
Quick connect...
Home
Serial (COM)
data_buff[3]=dd
data_buff[4]=11
data_buff[5]=22
data_buff[6]=33
data_buff[7]=44
Sessions
Tools
Macros
ARP
IPv4 - -687
rxbd: : *data=0x40000840
udp:src = 172.23.100.2
data_buff[0]=aa
data_buff[1]=bb
data_buff[2]=cc
data_buff[3]=dd
data_buff[4]=11
data_buff[5]=22
data_buff[6]=33
data_buff[7]=44
ARP
IPv4 - -689
rxbd: : *data=0x40000840
udp:src = 172.23.100.2
data_buff[0]=aa
data_buff[1]=bb
data_buff[2]=cc
data_buff[3]=dd
data_buff[4]=11
data_buff[5]=22
data_buff[6]=33
data_buff[7]=44
UNREGISTERED VERSION - Please support MobaXterm by subscribing to the professional edition here: http://mobaxterm.mobatek.net
```