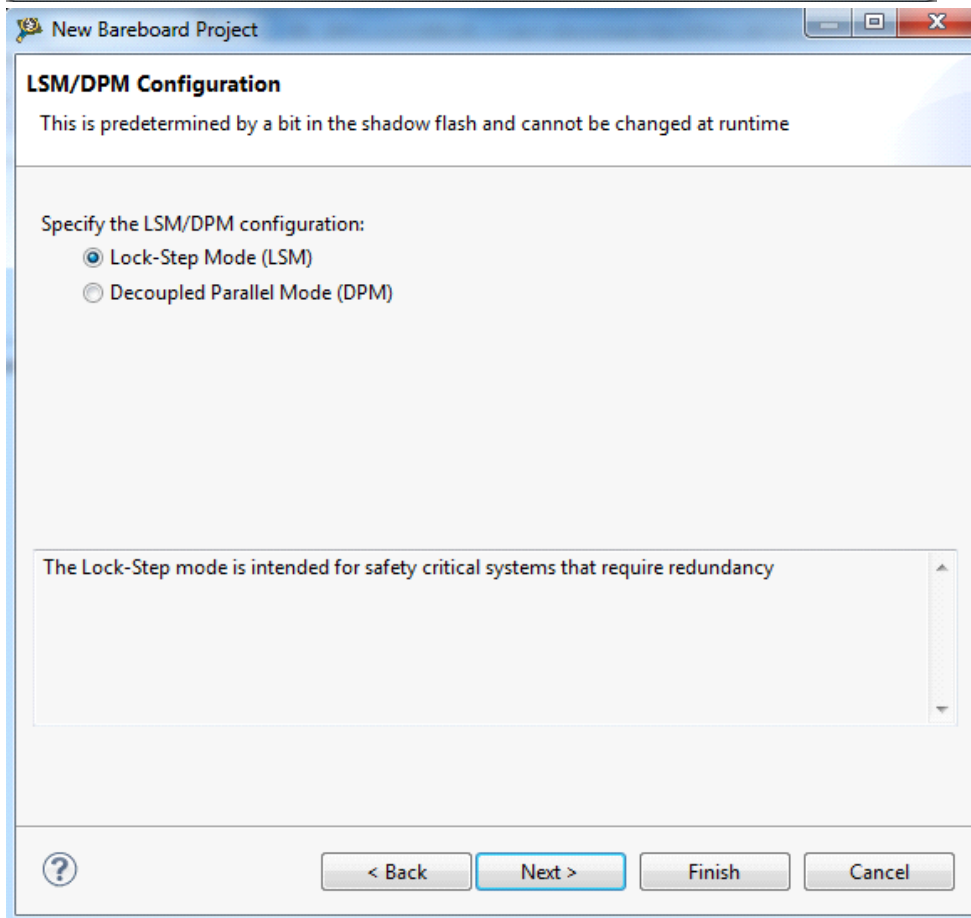
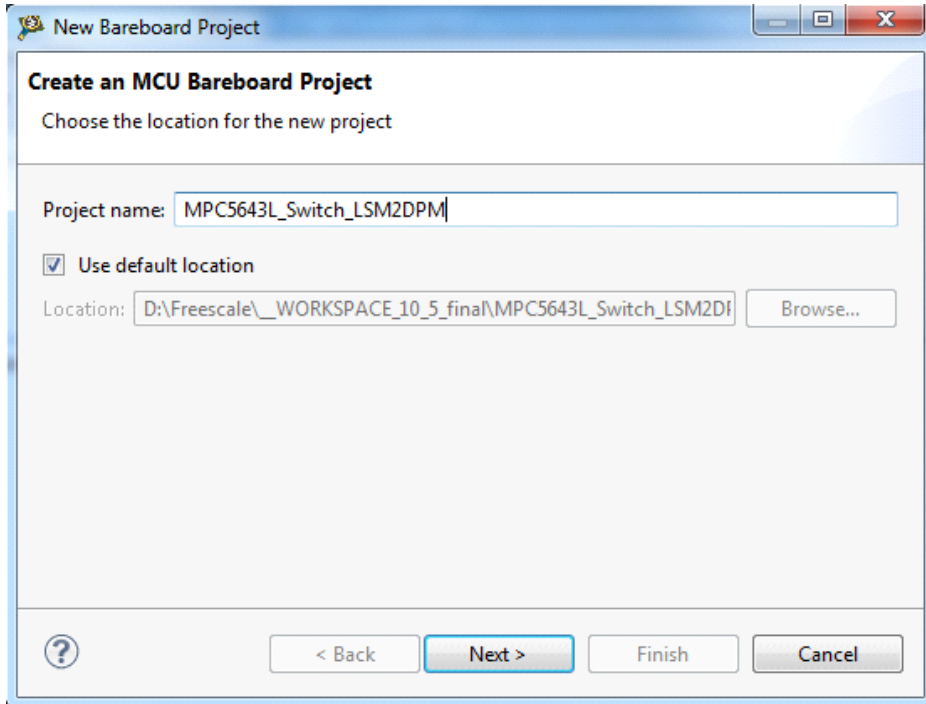
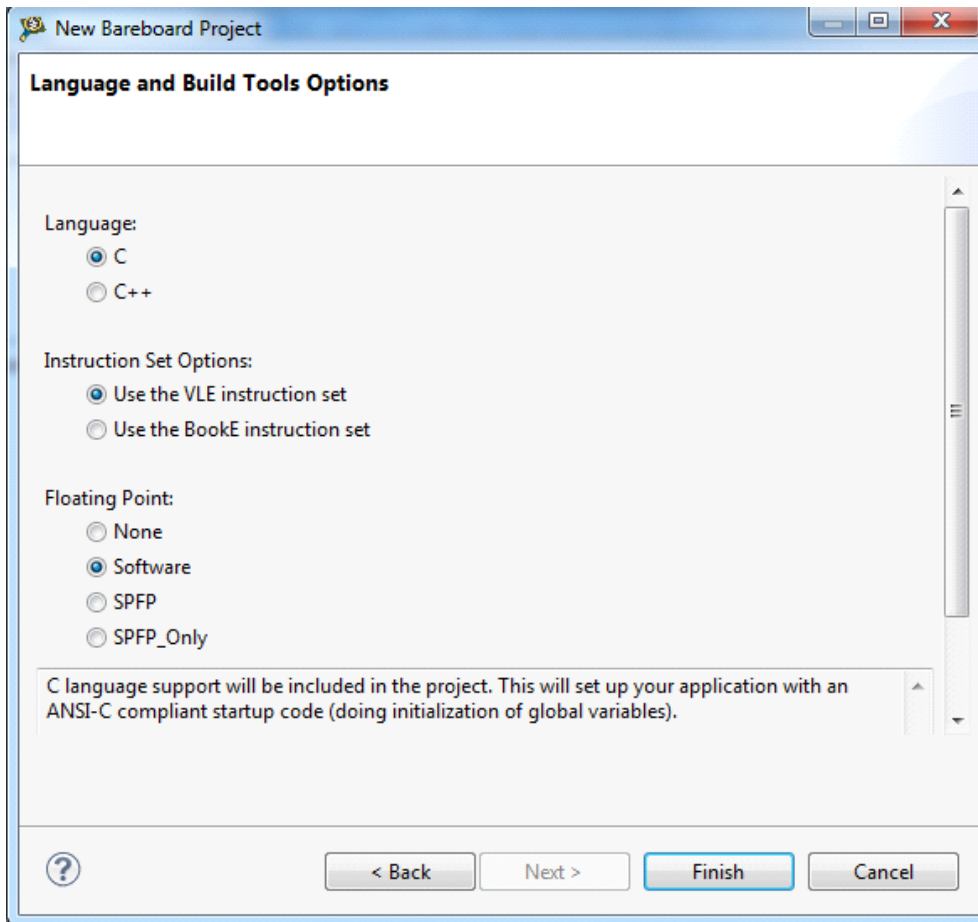


Switching LSM/DPM in CodeWarrior MCU 10.x - DRAFT

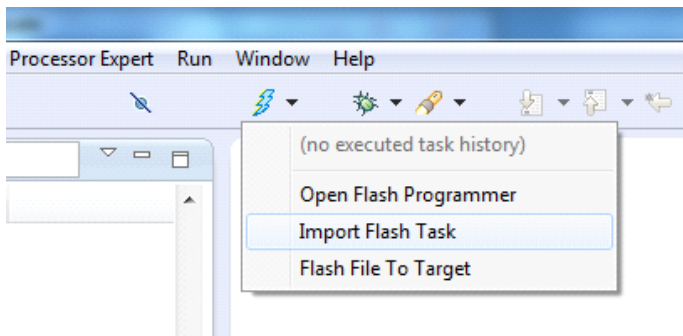
Tuesday, December 03, 2013 10:23 AM

- Create a new dummy MPC5643L LSM (VLE) project. The project debug configuration will be used to access the MCU.



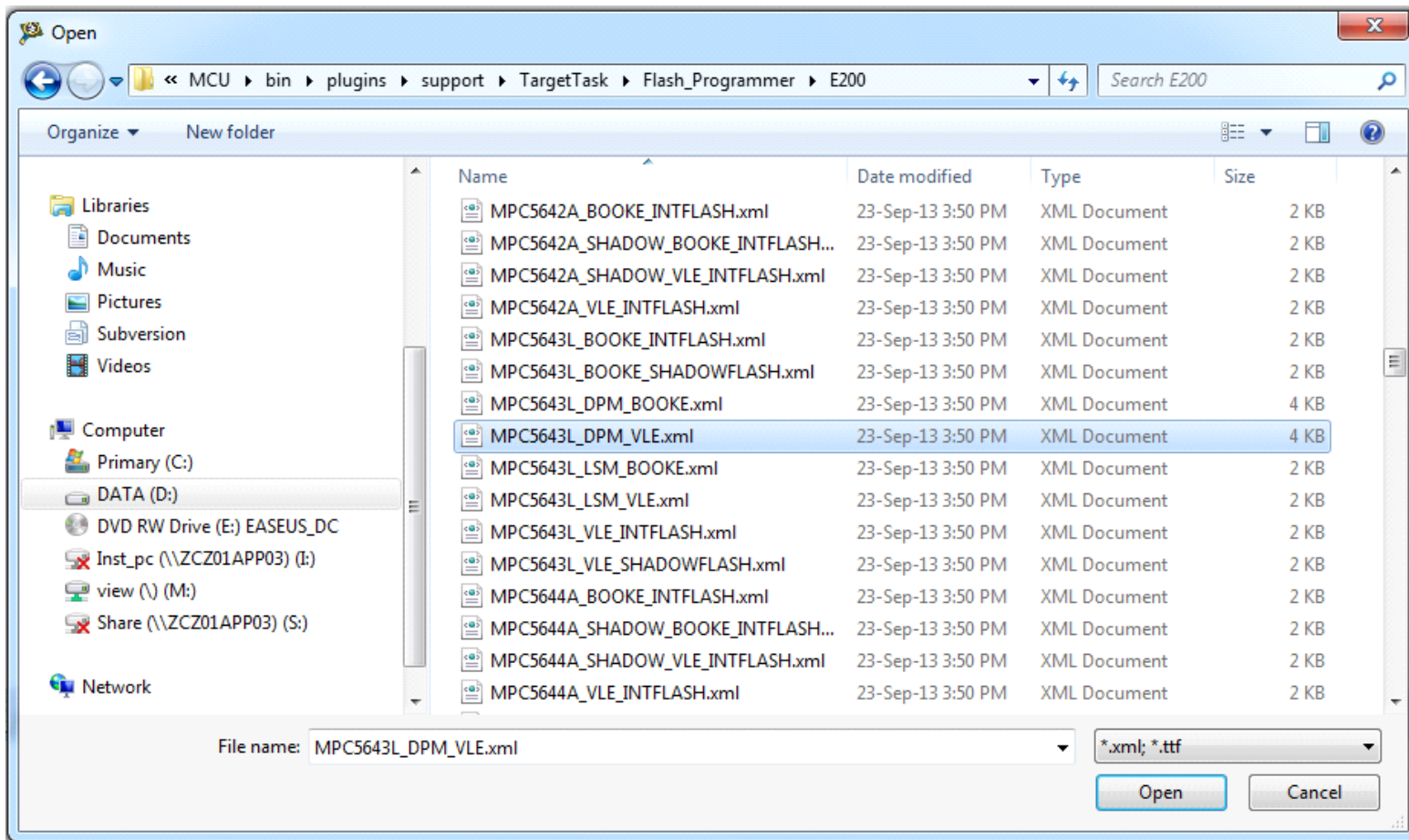


- Import Flash Task

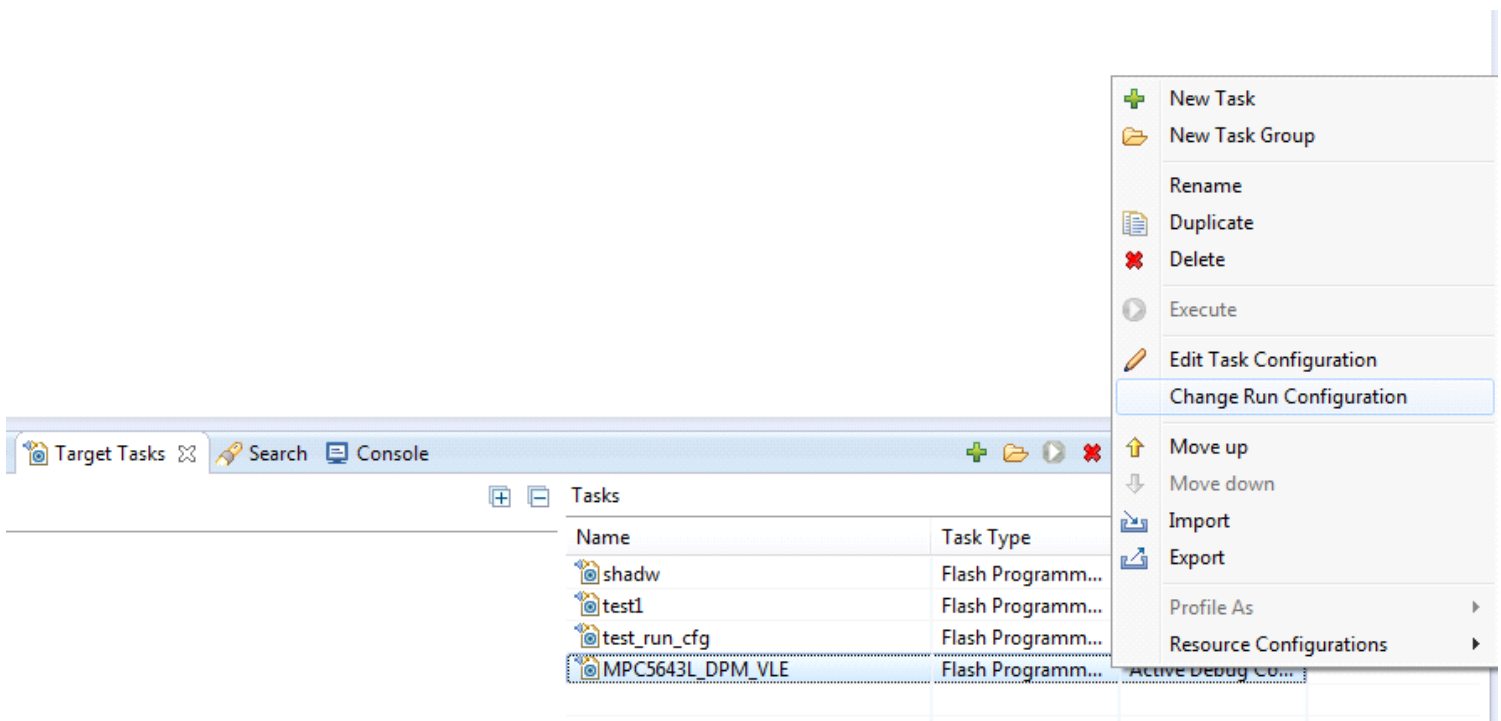


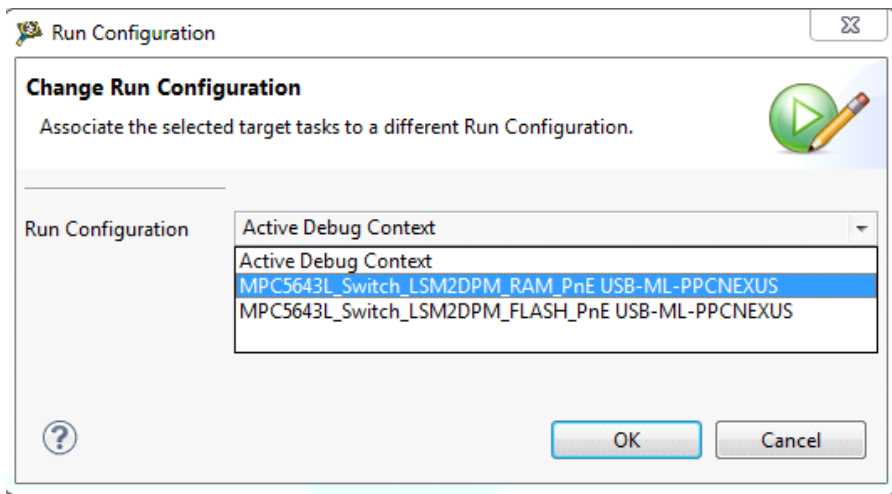
- Select the target task to switch mcu mode:
MPC5643L_DPM_VLE to switch from LSM to DPM
MPC5643L_LSM_VLE to switch from DPM to LSM

Note: there are also BOOKE alternatives which needs to be used if originally created dummy project is not VLE but BOOKE (see the first step)

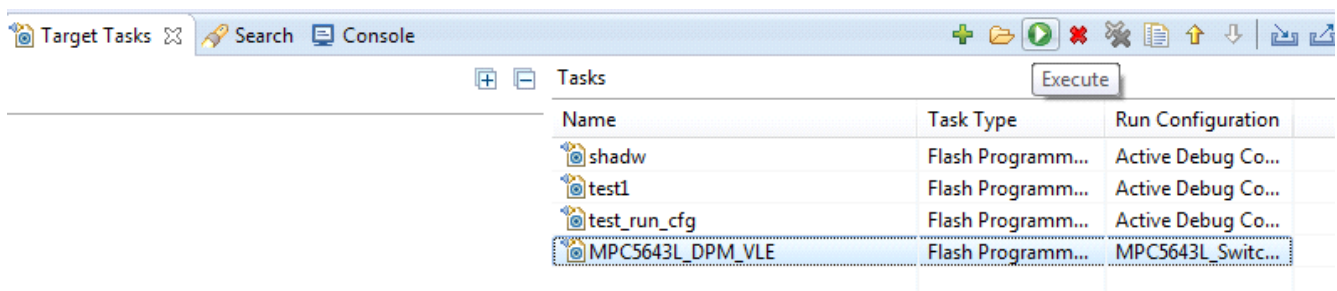


- Once the target task is imported the "Target Task" View tab is opened. Right click on the imported target task and select "Change Run Configuration". Select one of the dummy project debug configurations which matches the MCU connection you have (e.g. P&E, OSJTAG..)





- The Execute icon (green arrow) should be now enabled so the task can be executed.



- At the end of the execution the MCU shall be switched to required mode. MCU power on reset is required.