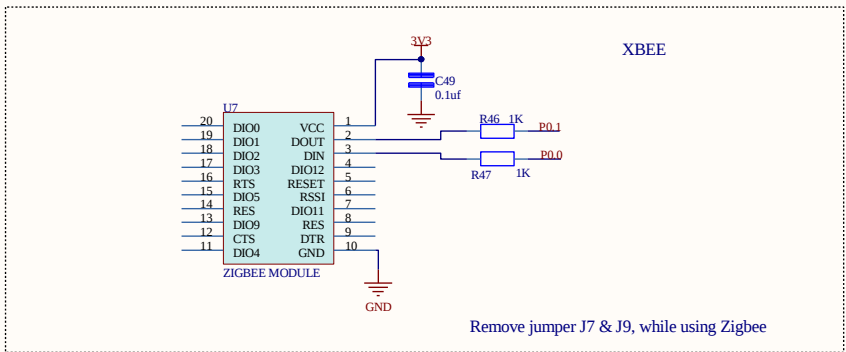
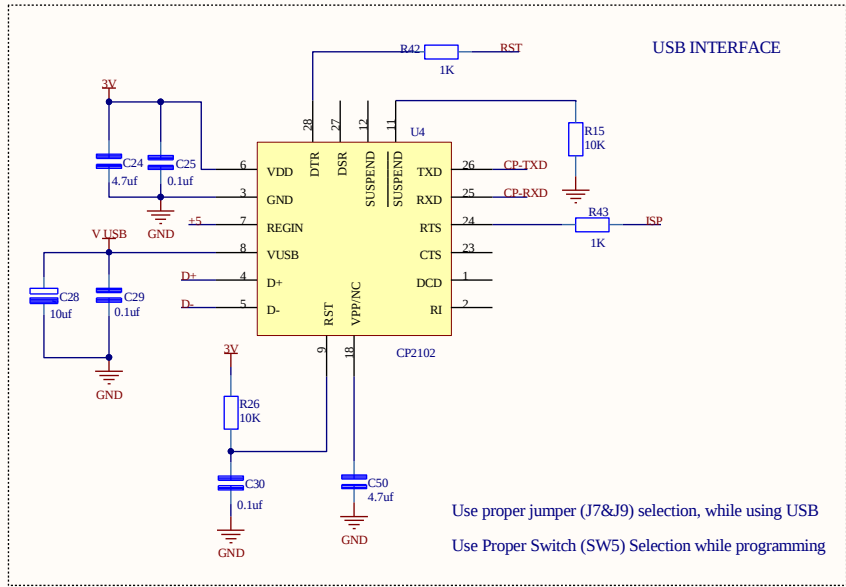


Sheet2
Sheet2.Sch

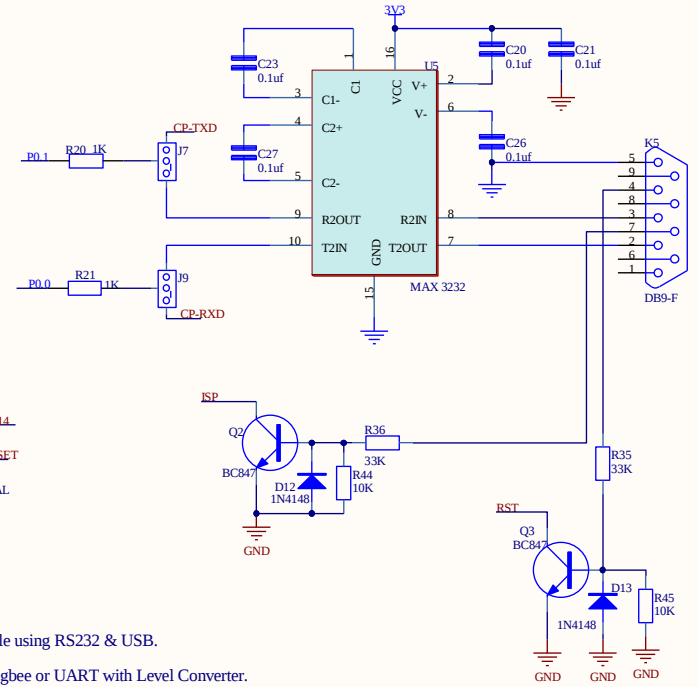
Sheet3
Sheet3.Sch

Sheet4
Sheet4.Sch

Title LPC213X DEVELOPMENT BOARD(Mini)		
Size B	Number SCH-0233A	Revision V1.01
Date: 6/9/2015	Sheet of 1/4	
File: D:\syam2014...\Sheet1.SchDoc	Drawn By:	

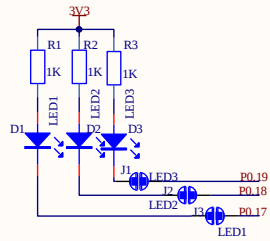


RS232 INTERFACE



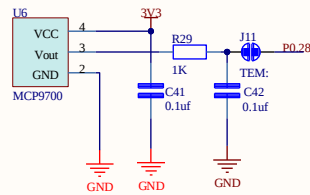
Title LPC213X DEVELOPMENT BOARD(Mini)		
Size B	Number SCH-0233A	Revision V1.01
Date 6/9/2015	Sheet of 2/4	Drawn By
File D:\syam2014...Sheer2.SchDoc		

LED INTERFACE



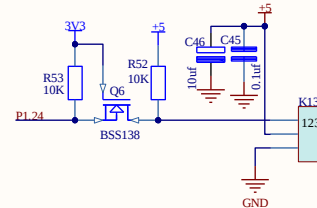
Remove J1,J2 &J3,while P0.19,P0.18 &P0.17 are used for other purpose

TEMPERATURE SENSOR

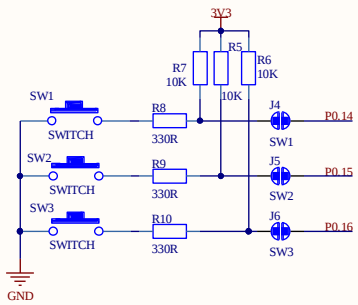


Remove J11while P0.28 is used for other purpose

SERVO MOTOR

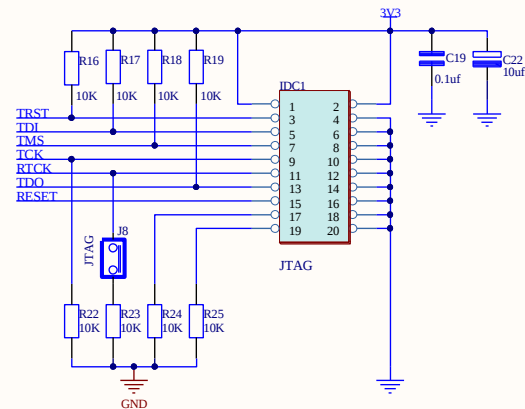


KEY INTERFACE



Remove J4,J5 &J6,while P0.14,P0.15 &P0.16 are used for other purpose

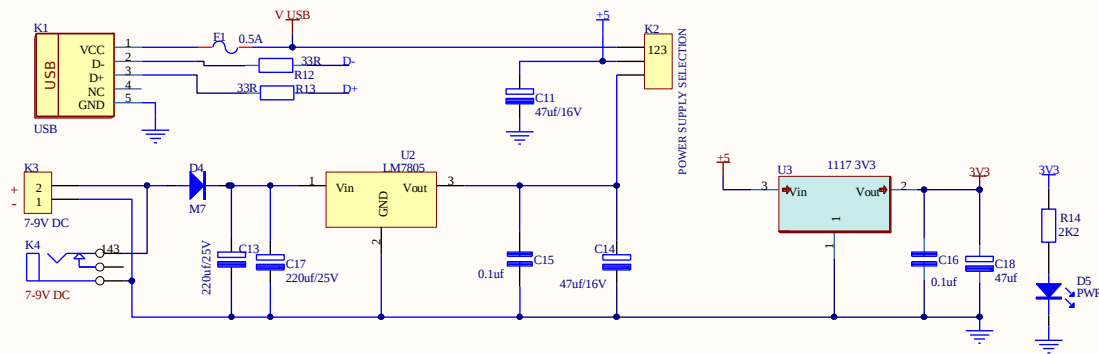
JTAG



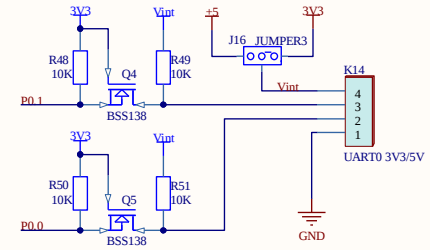
Title LPC213X DEVELOPMENT BOARD(Mini)		
Size B	Number SCH-0233A	Revision V1.01
Date: 6/9/2015	Sheet of 3/4	Drawn By:
File: D:\syam2014...\Sheet3.SchDoc		

POWER SUPPLY

Use proper jumper (K2) Selection According to the power supply

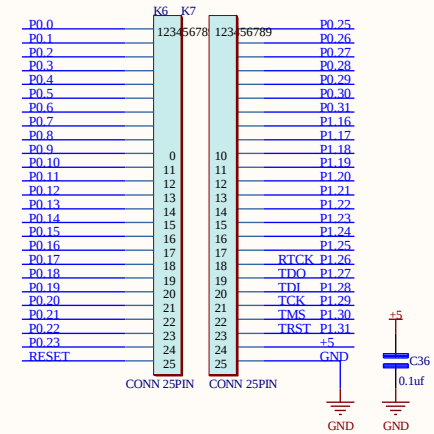


UART0 3V3/5V

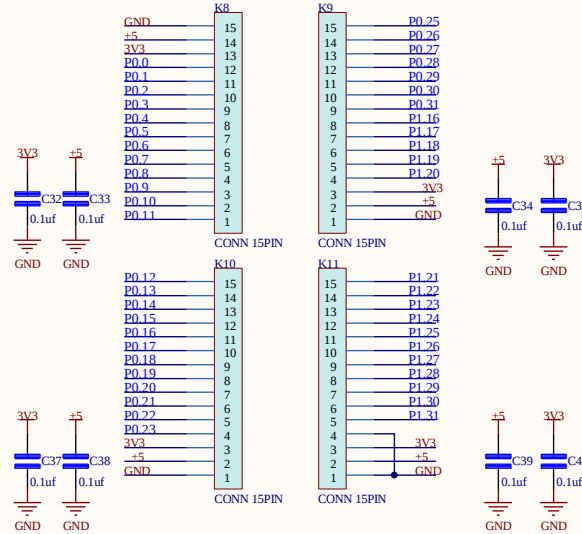


Remove jumper J7&J9, while using UART with level converter.
Use proper jumper (J16) Selection According to the interfacing Voltage required.

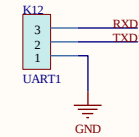
GPIO Pins Near Processor



GPIO Pins Near Breadboard



UART1



Title LPC213X DEVELOPMENT BOARD(Mini)		
Size B	Number SCH-0233A	Revision V1.01
Date: File:	6/9/2015 D:\syam2014...Sheet4.SchDoc	Sheet of Drawn By: 4/4