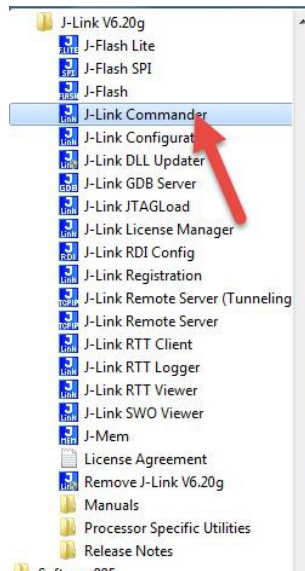


1. Using the Jlink or LPC-Link2 programmed with Jlink firmware connect the board.
2. Opening the J-Link Commander



3. Typing the “connect” to connect the device, then type “device LPC54608J512”, select the SWD by type “S” or select JTAG interface by “J”. Next, set the speed: 4000 kHz.

```
J-Link Commander
SEGGER J-Link Commander V6.20g <Compiled Oct 20 2017 17:10:04>
DLL version U6.20g, compiled Oct 20 2017 17:09:27

Connecting to J-Link via USB...O.K.
Firmware: J-Link LPCXpresso U2 compiled Sep 23 2016 12:14:15
Hardware version: V1.00
S/N: 725265765
UTref = 3.3000V

Type "connect" to establish a target connection, '?' for help
J-Link>connect
Please specify device / core. <Default>: LPC54608J512
Type '?' for selection dialog
Device>device LPC54608J512
Please specify target interface:
  J) JTAG <Default>
  S) SWD
  F) FINE
  I) ICSP
  C) C2
TIPS
Specify target interface speed [kHz]. <Default>: 4000 kHz
Speed>4000 kHz
Device "LPC54608J512" selected.
```

4. After the device is recognized, you can type “unlock LPC5460x” to erase complete flash.

```
Connecting to target via SWD
Found SW-DP with ID 0x2BA01477
Found SW-DP with ID 0x2BA01477
Scanning AP map to find all available APs
AP[1]: Stopped AP scan as end of AP map has been reached
AP[0]: AHB-AP (IDR: 0x24770011)
Iterating through AP map to find AHB-AP to use
AP[0]: Core found
AP[0]: AHB-AP ROM base: 0xE00FF000
CPUID register: 0x410FC241. Implementer code: 0x41 (ARM)
Found Cortex-M4 r0pi, Little endian.
FPUnit: 6 code (BP) slots and 2 literal slots
CoreSight components:
ROMTbl[0] @ E00FF000
ROMTbl[0][0]: E000E000, CID: B105E00D, PID: 000BB00C SCS
ROMTbl[0][1]: E0001000, CID: B105E00D, PID: 003BB002 DWT
ROMTbl[0][2]: E0002000, CID: B105E00D, PID: 002BB003 FPB
ROMTbl[0][3]: E0000000, CID: B105E00D, PID: 003BB001 ITM
ROMTbl[0][4]: E0040000, CID: B105900D, PID: 000BB9A1 TPIU
ROMTbl[0][5]: E0041000, CID: B105900D, PID: 000BB925 ETM
Cortex-M4 identified.
J-Link>unlock LPC54608J512
Syntax: unlock <DeviceName>
---Supported devices---
LM3Sxxx [Auto]
Kinetis
EFM32Gxxx
LPC5460x
J-Link>unlock LPC5460x
Found SW-DP with ID 0x2BA01477
Unlocking device...OK.
Note: Device needs to be power-cycled, if SWD access was disabled.
J-Link>
```