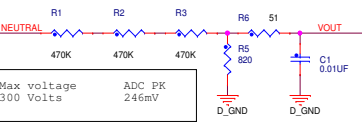
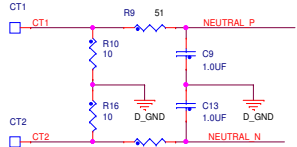


Voltage Attenuation Circuit



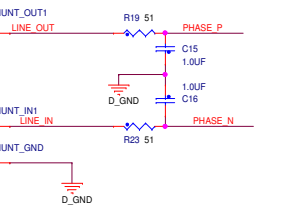
Max voltage 300 Volts
ADC PK 246mV

CT Current Sense Circuit - Differential Mode



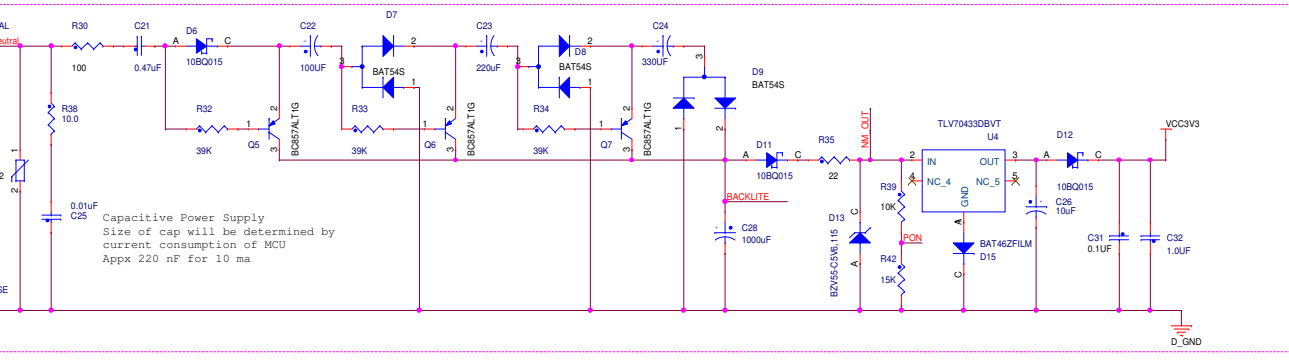
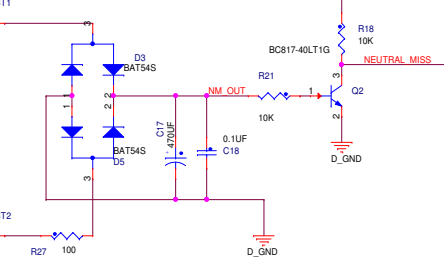
Max Current 44 Amps
CT Turn 2500
ADC PK 248 mV

Shunt Current Sense Circuit

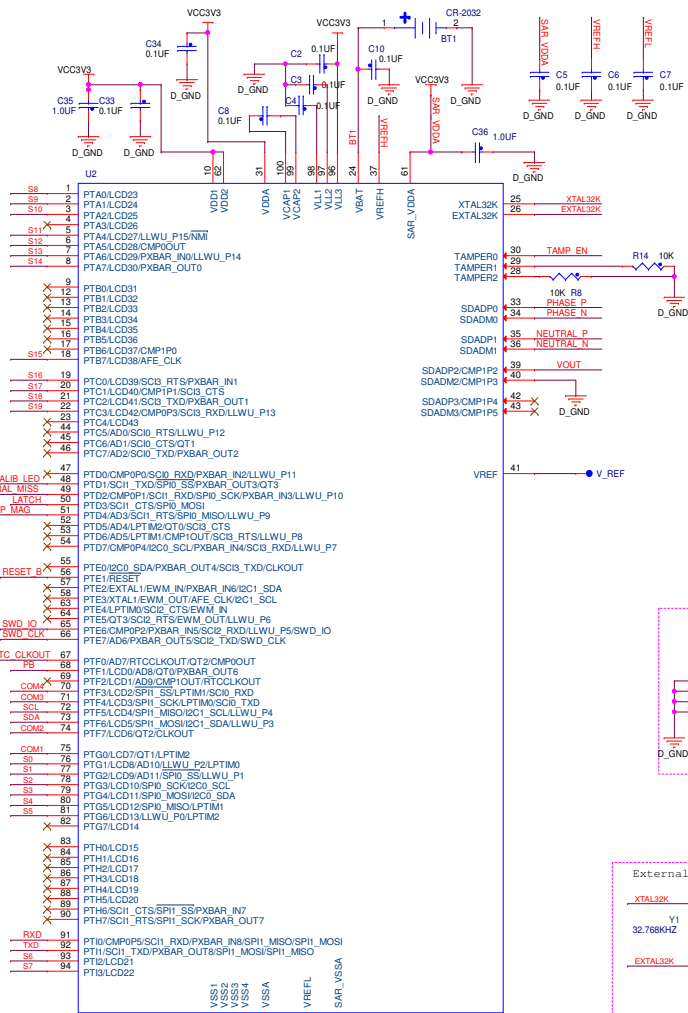


Max Current 44 Amps
Shunt 500uohm
ADC PK (Gain 8) 248 mV

Neutral Missing CT

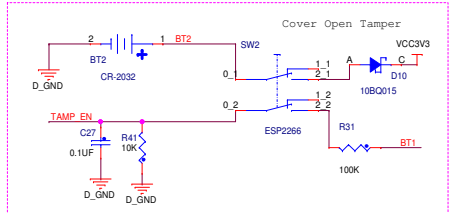
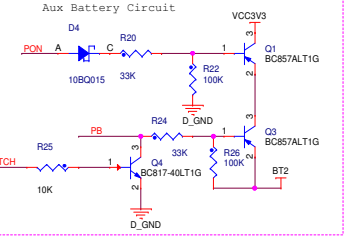
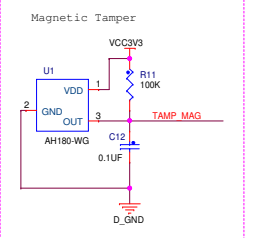
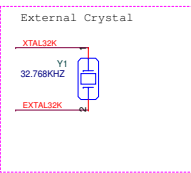
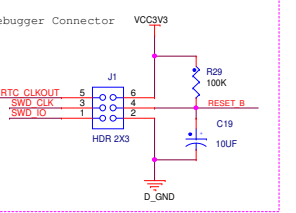
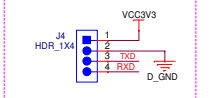
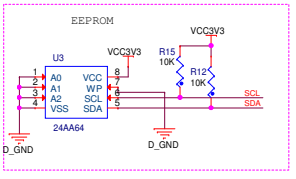
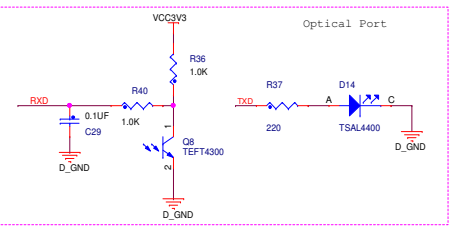
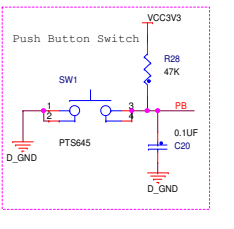
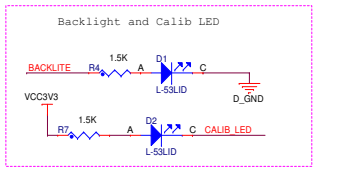
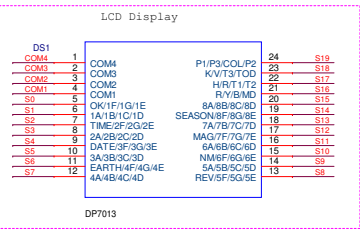


Capacitive Power Supply
Size of cap will be determined by current consumption of MCU
Appx 220 nF for 10 ma



Revisions

Rev	Description	Date	Designer
X1	Initial Release	1 JULY 12	NM
X2	Updated Review comments	25 JULY 12	NM
X3	Updated Review comments	17 AUG 12	BL



		Microcontroller Solutions Group 8501 Williams Canyon Drive West Austin, TX 78735-8558	
This document contains information proprietary to Freescale Semiconductor and shall not be used for engineering design, procurement or manufacture in whole or in part without the express written permission of Freescale Semiconductor.			
Design:	Neeraj Mangla	Drawing Title:	PKM34Z128CLL5_1PH_EMETER
Drawn by:	Barwari Ial	Page Title:	Table of Contents/Revisions
Approved:	Manish Sharma	Size C	Document Number SCH-27679 PDF: SPF-27679
Date:	Friday, August 17, 2012	Sheet	1 of 2