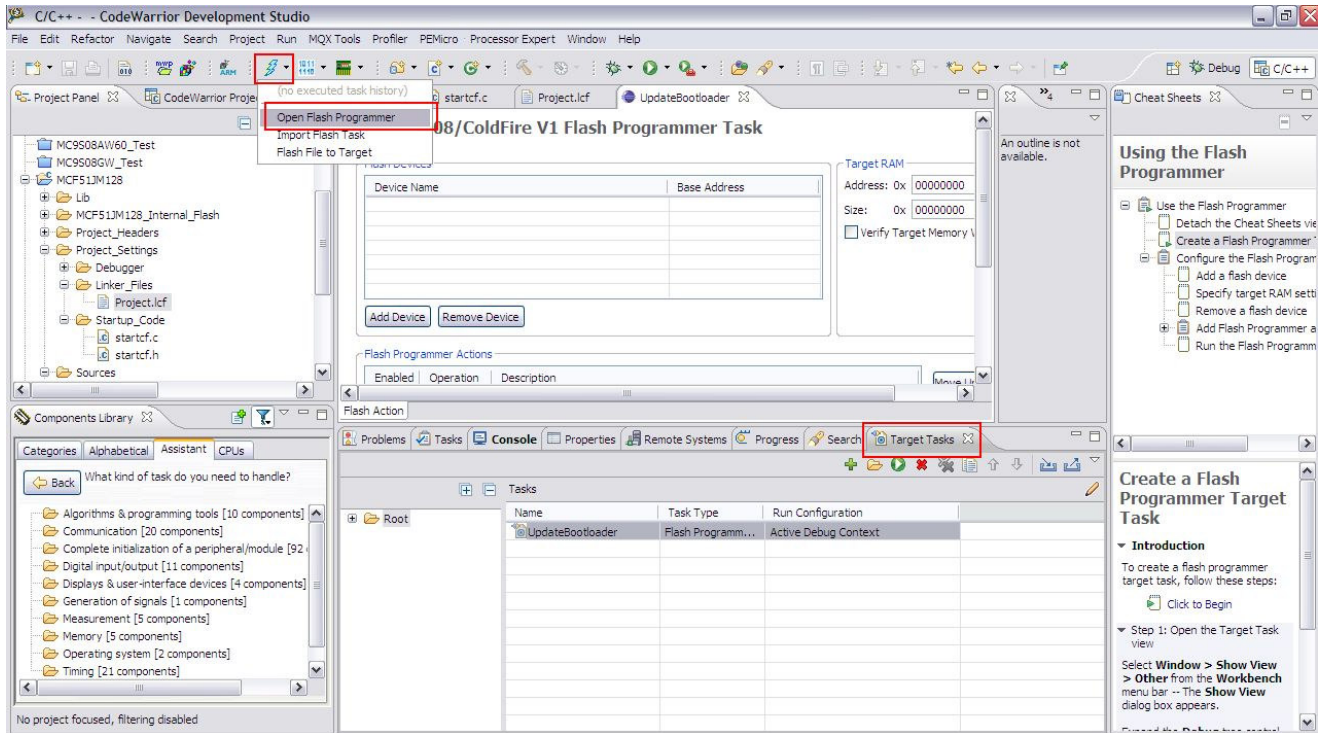


Customize Target Task for your project

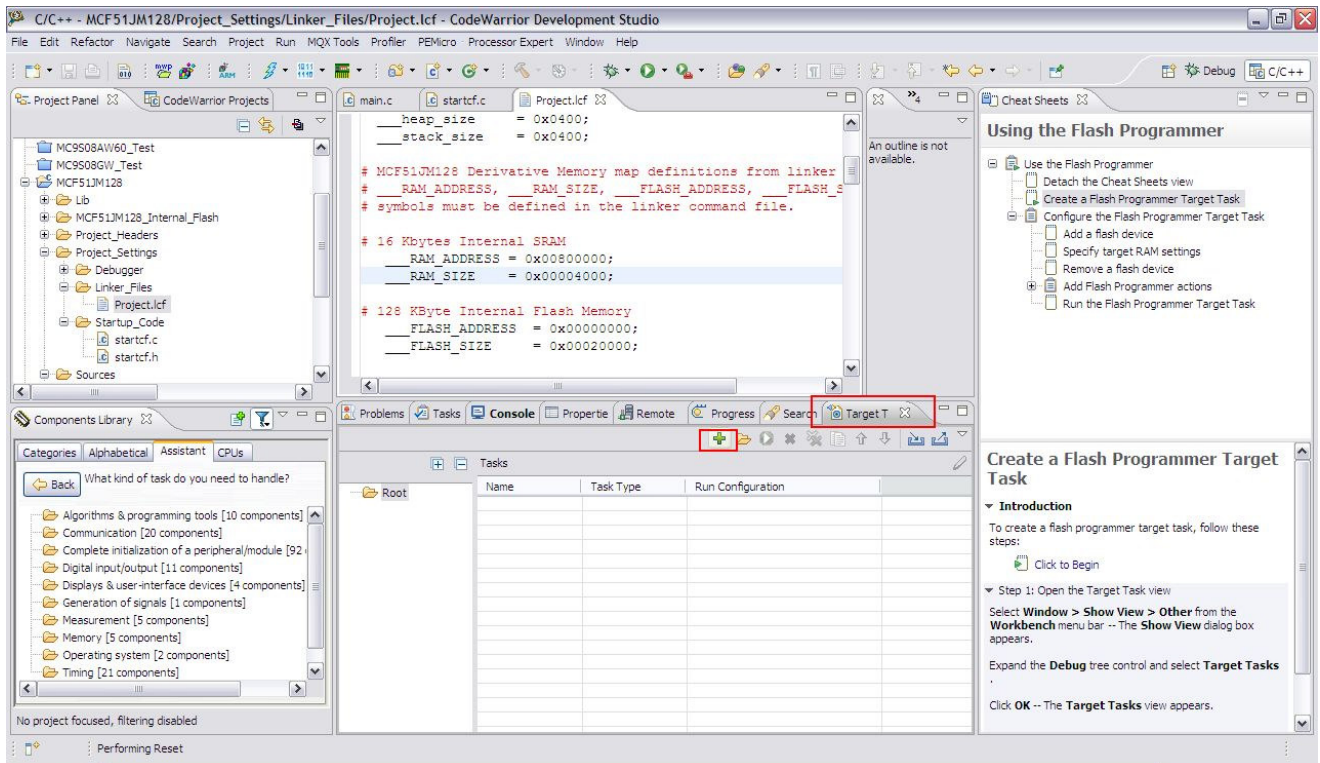
-----Li Yong & Xu Weiping

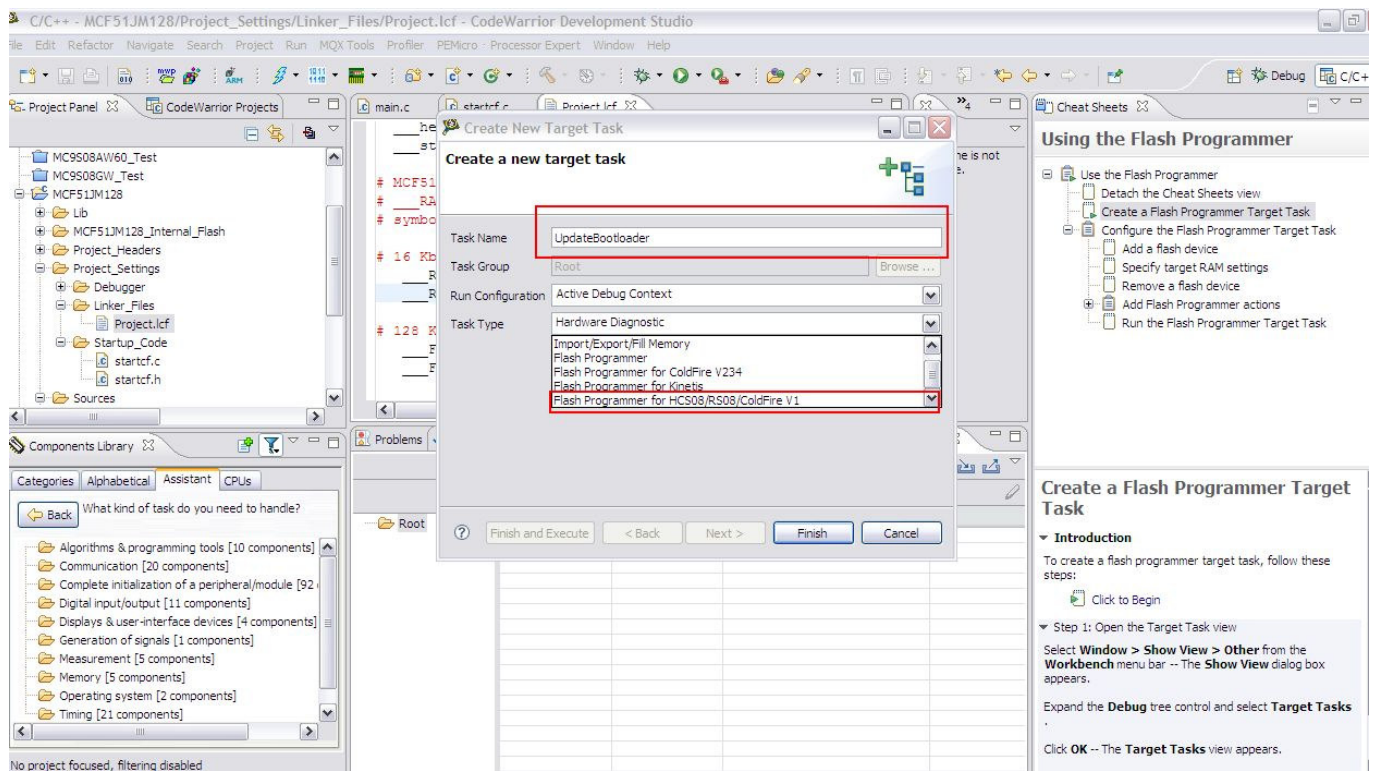
Sometimes, Customer need to preserve some code and just program one or more sectors in the flash when connecting with debuuger in CW10.1. By default, when connecting to debugger, the flash will be mass erased ,that will be violative of customer's intention. By using Traget Task and Flash programmer plug-in, we can aviod this, and customize debug configuration with specified flash operation.

1. Open CW10.1, Open the project you intend to operate (or created one new project), Then Open Flash Programmer and Target Task Frame.



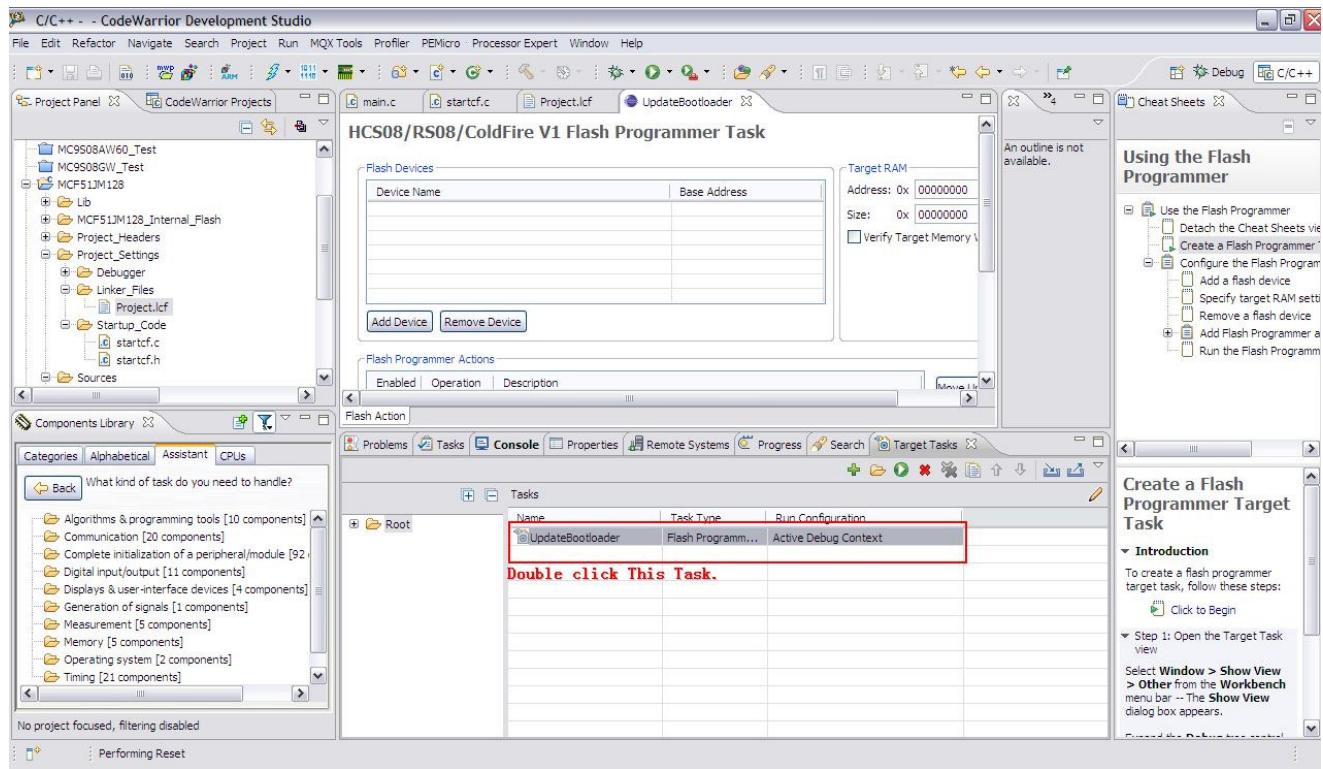
2. Add one Task, For example, Named UpdateBootloader.



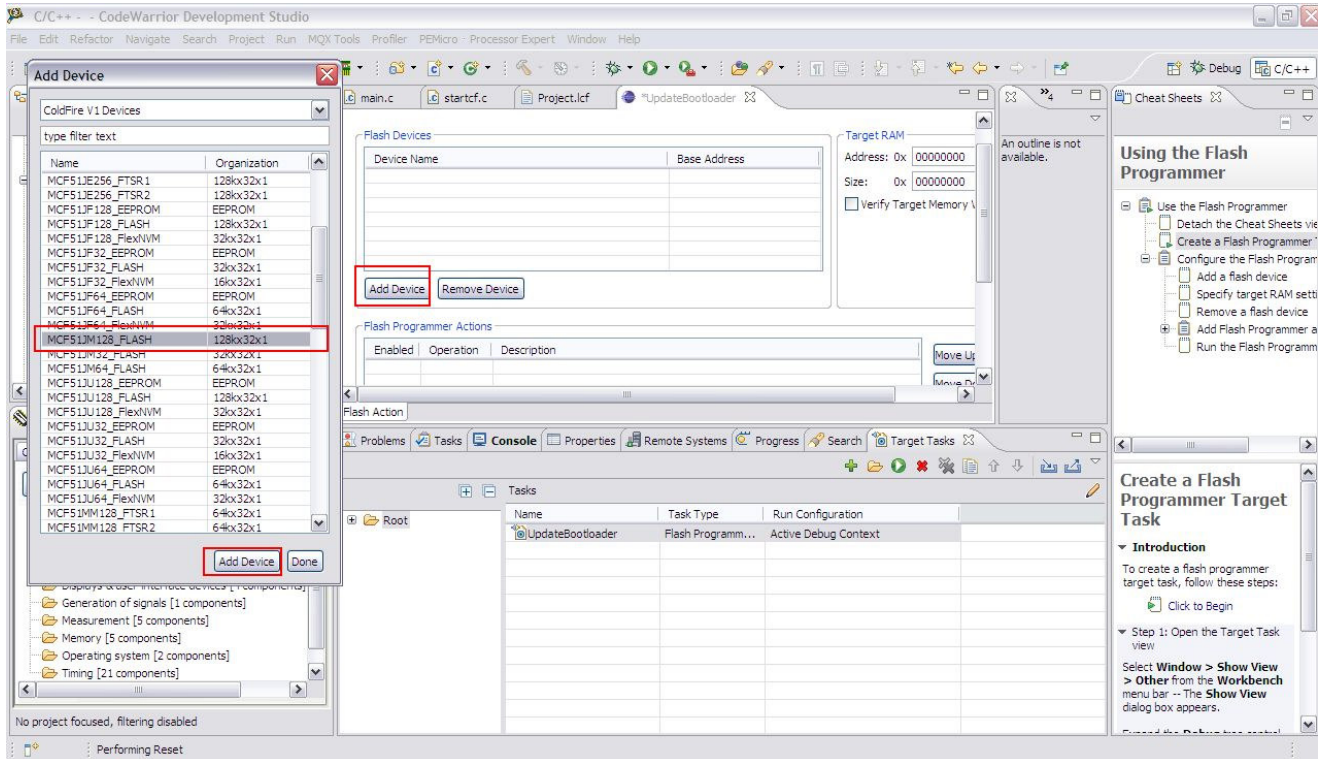


3. Edit the Task.

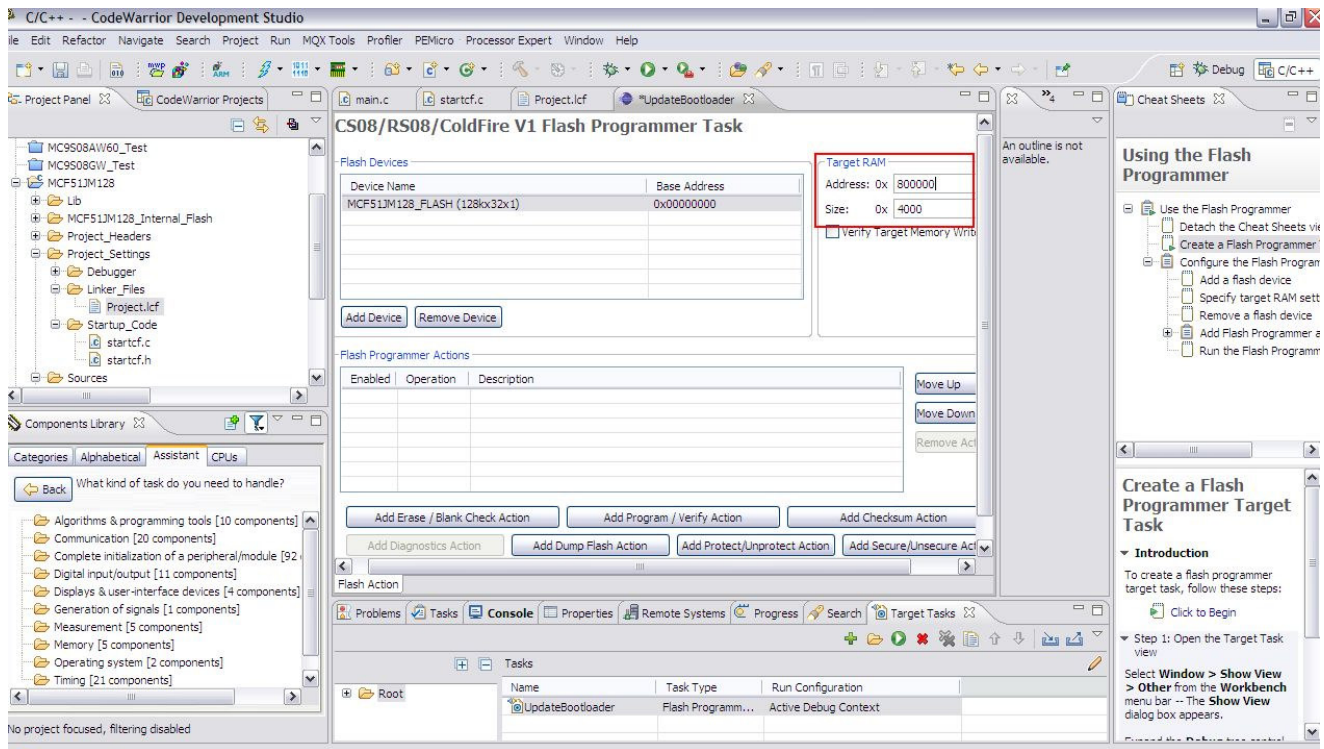
- 1) Open the Task Edit frame



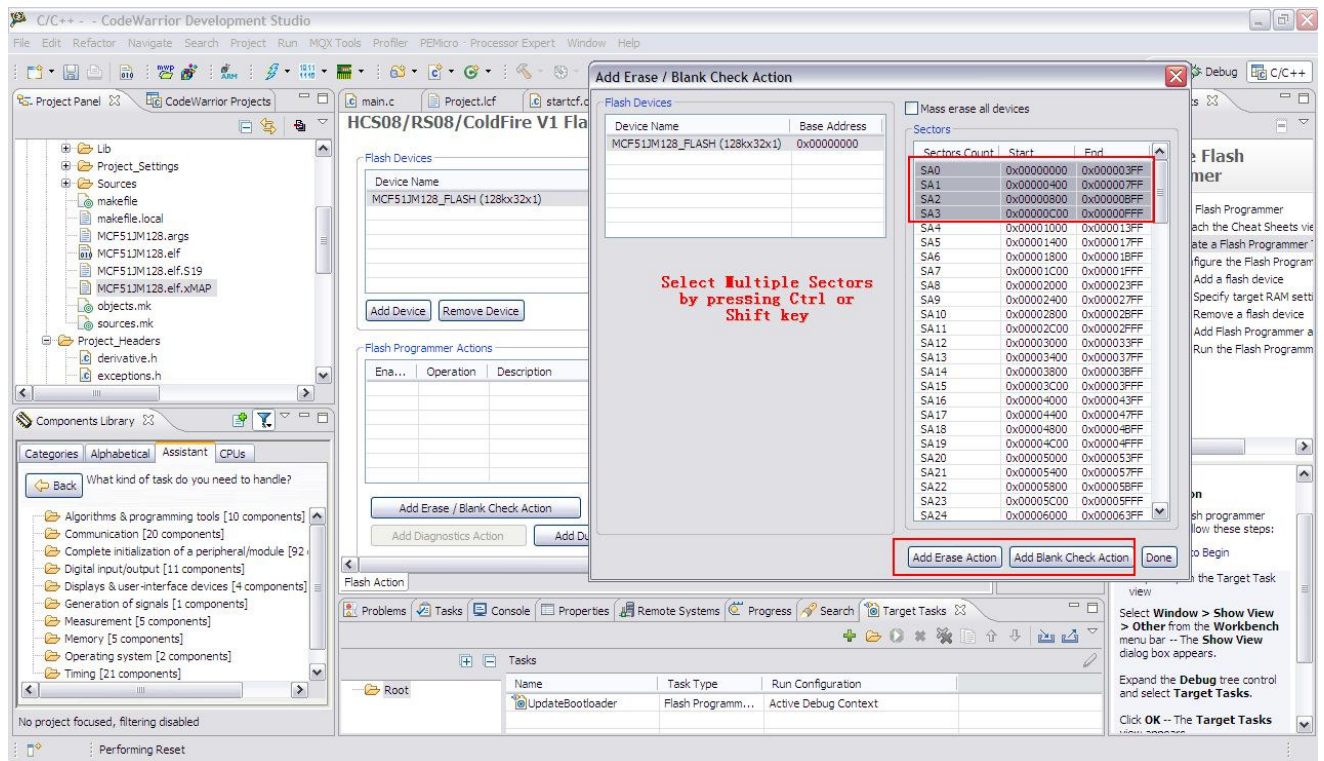
2) Add Device for the project.



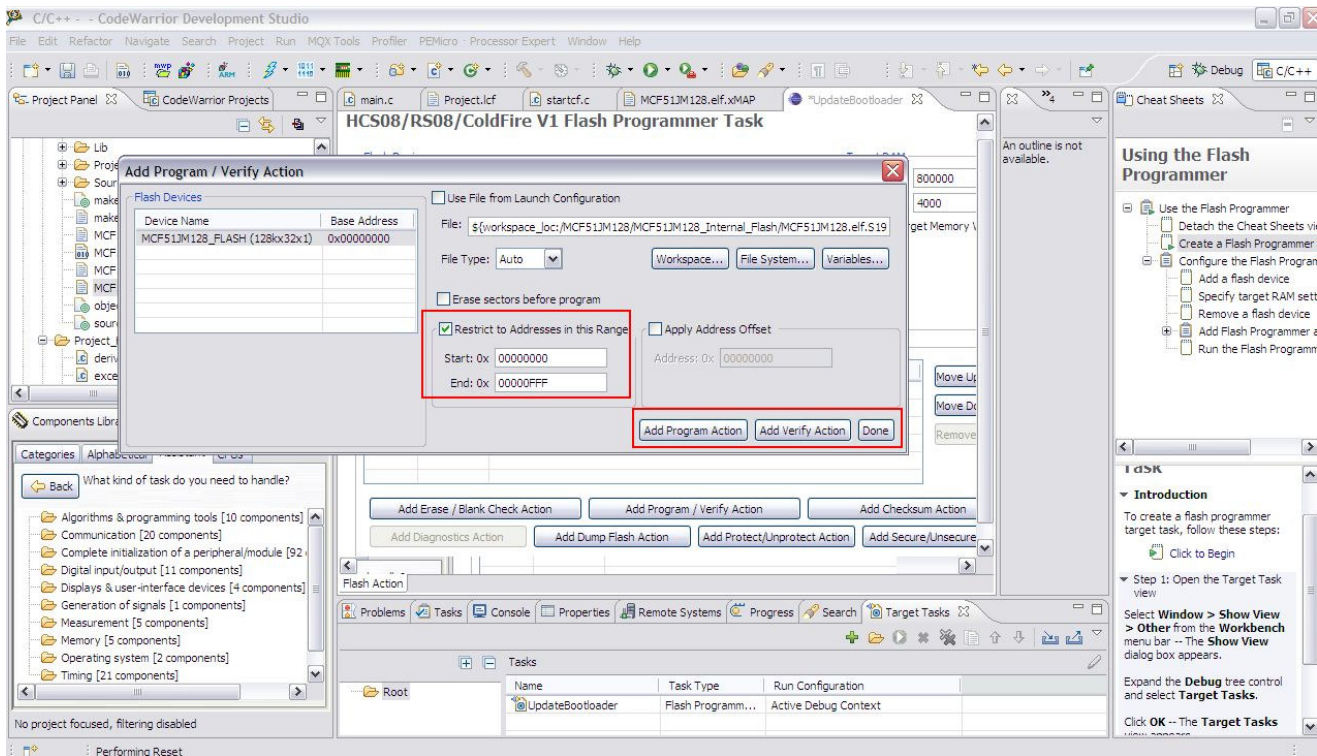
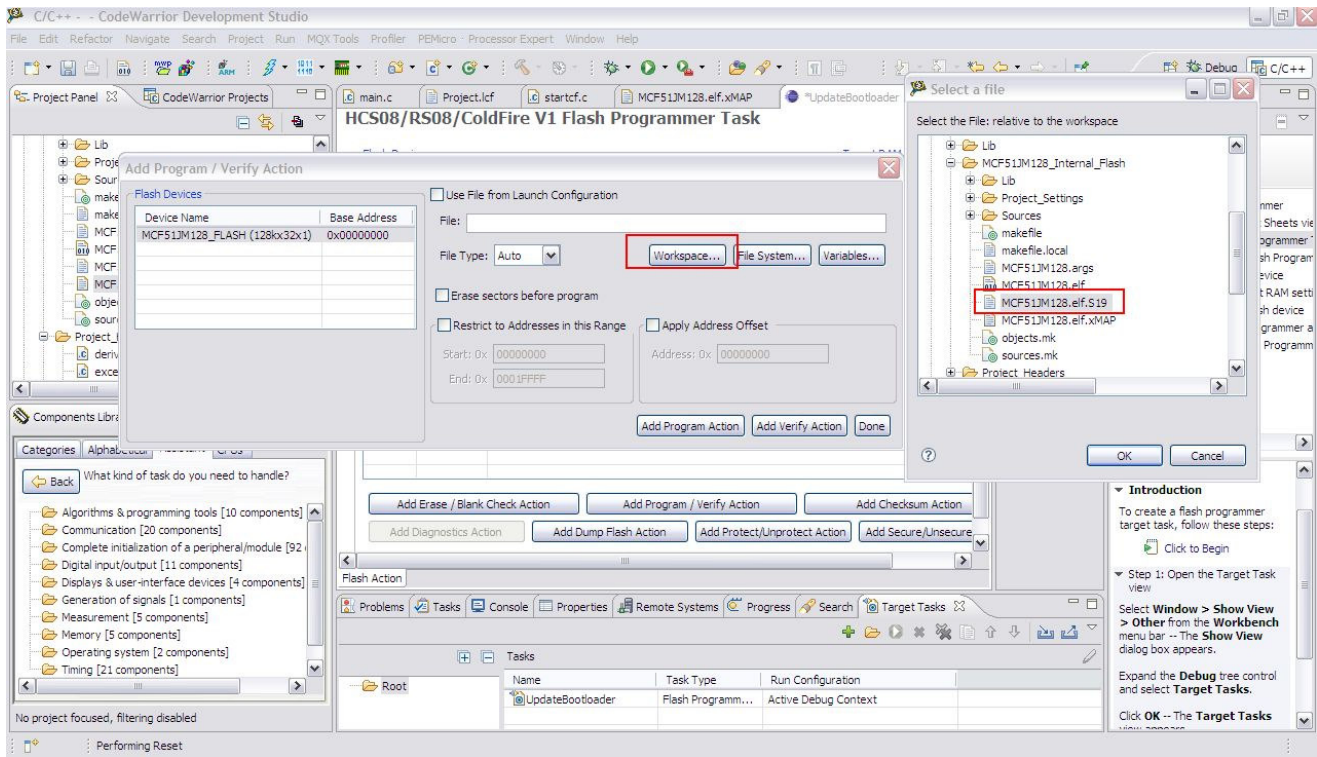
3) Add RAM Address for the device



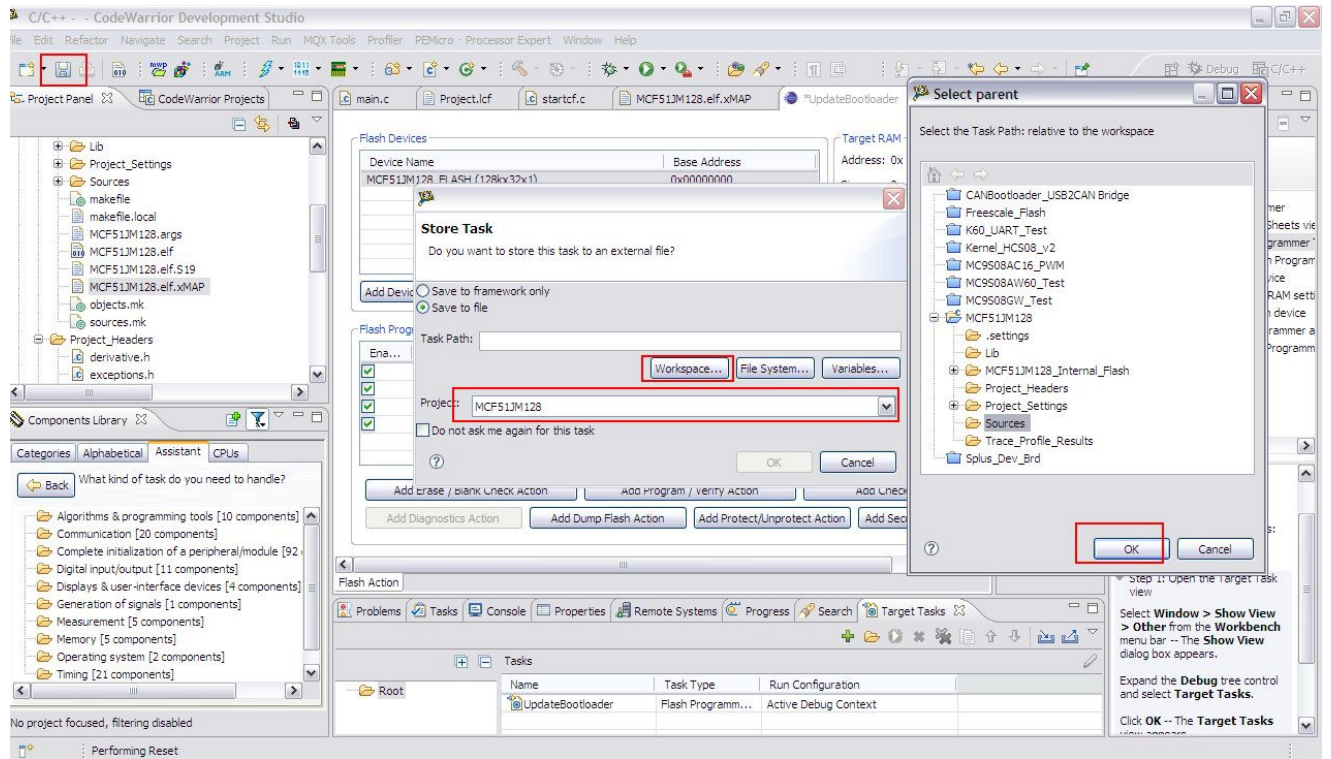
4) Select Multiple Erased Sectors



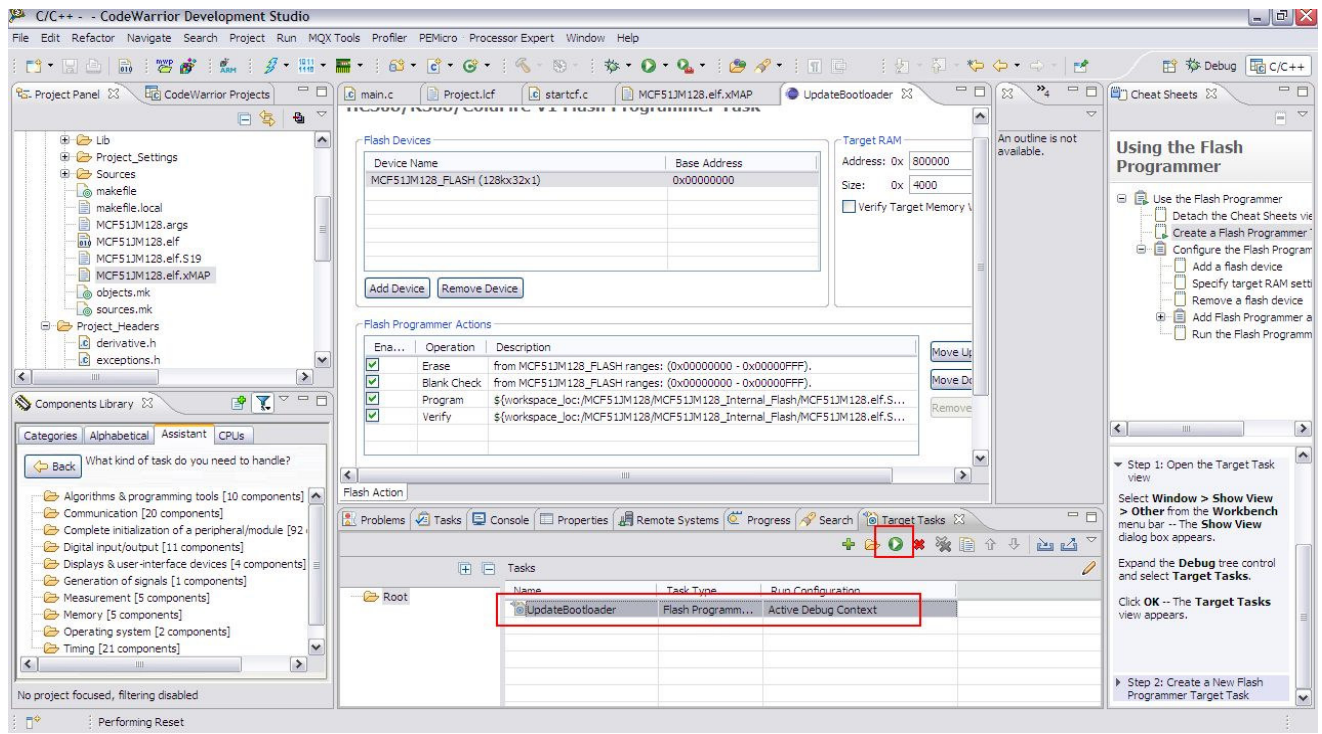
5) Select Program Files and Specifie the Flash address Range intended to programmed.



4. Save the Task

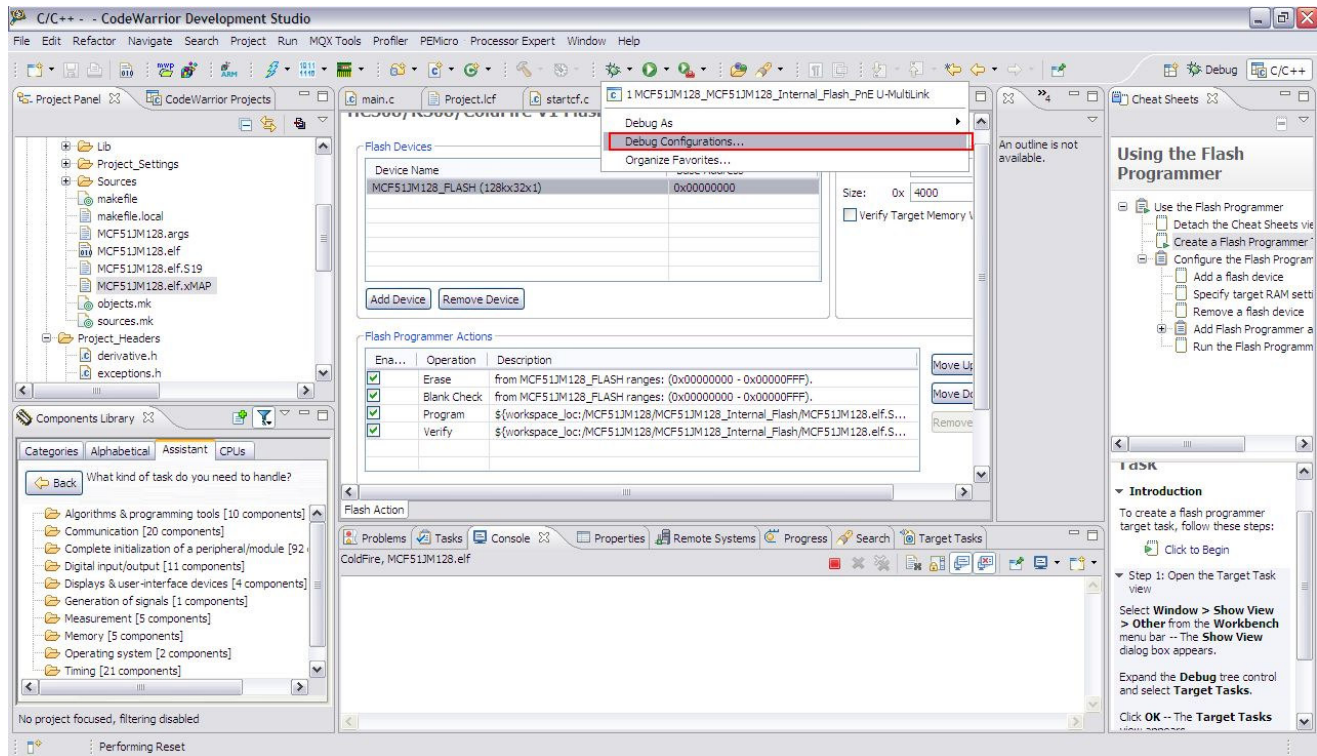


5. Execute the Task, you can click execute button to execute this task or you can add this task to debug configuration. Refer to Steps followed.



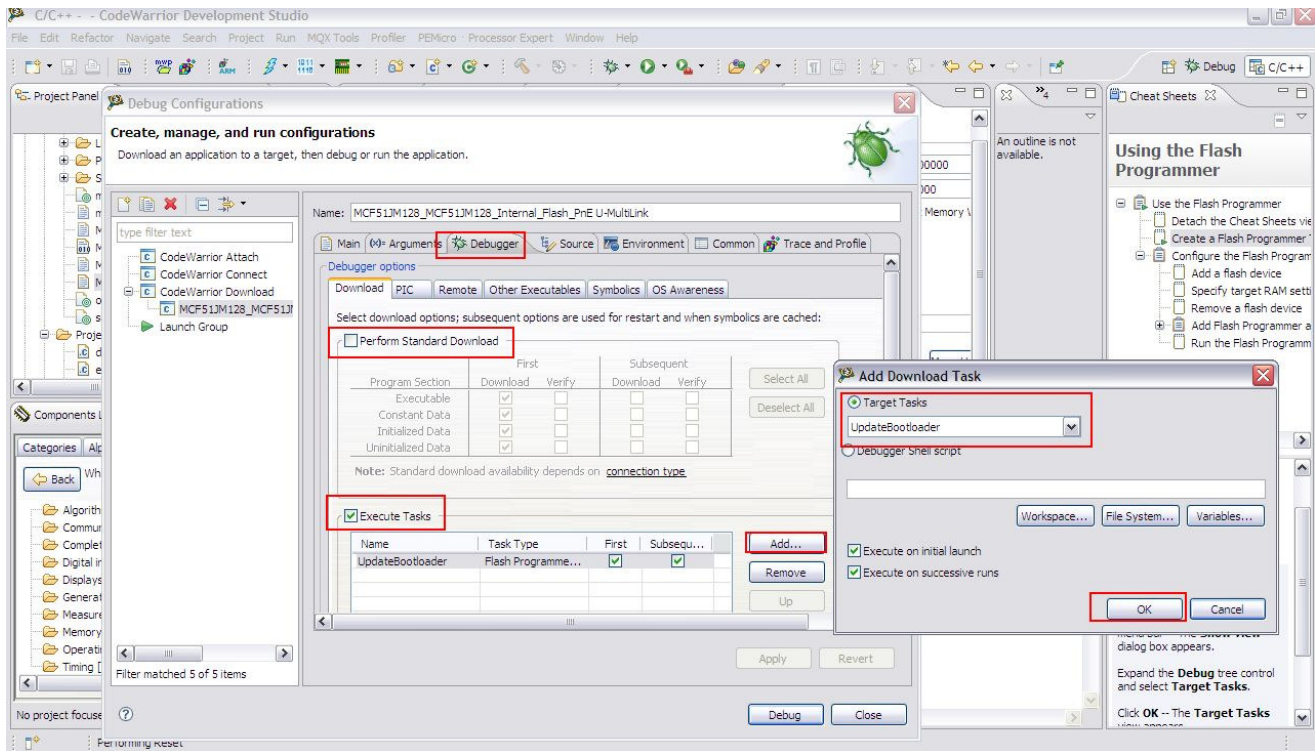
6. Add this task to Debug configuration

1) Open debug configuration



2) Add this Task into debug configuration.

Standard Download should be deselected at this moment. And select Execute Tasks. By doing that, Mass erase action will be eliminated. And the flash will be operated upon the rules specified in the Task.



Now you can execute the task by click Debug button easily.

