

# How to support multiple targets in CodeWarrior(Classic, Eclipse)/KDS

---

*By Jennie Zhang*

## Contents

1. Multiple Target Support in Classic CodeWarrior.....	2
1.1 One file identifying multiple targets.....	2
1.2 One file for specific target only .....	4
2. Multiple Build Configuration Support in Eclipse CodeWarrior and KDS.....	5
2.1 One file identifying Multiple build configurations.....	5
2.2 One file for specific build configuration only .....	9

In some application, we hope one project can support multiple targets. Some typical examples: user needs different firmware to run on different PCB with different crystal on it; Or sometimes user needs one project support both debug and release mode; another widely used example is, user needs one project support multiple part numbers.etc.

To implement the multiple targets project, we will consider at least three aspects:

- Depend on the different targets, some files/codes may be included or not.
- Depend on the different targets, compiler/linker settings may be different.
- If bootloader involved, different target may link with different bootloader firmware.

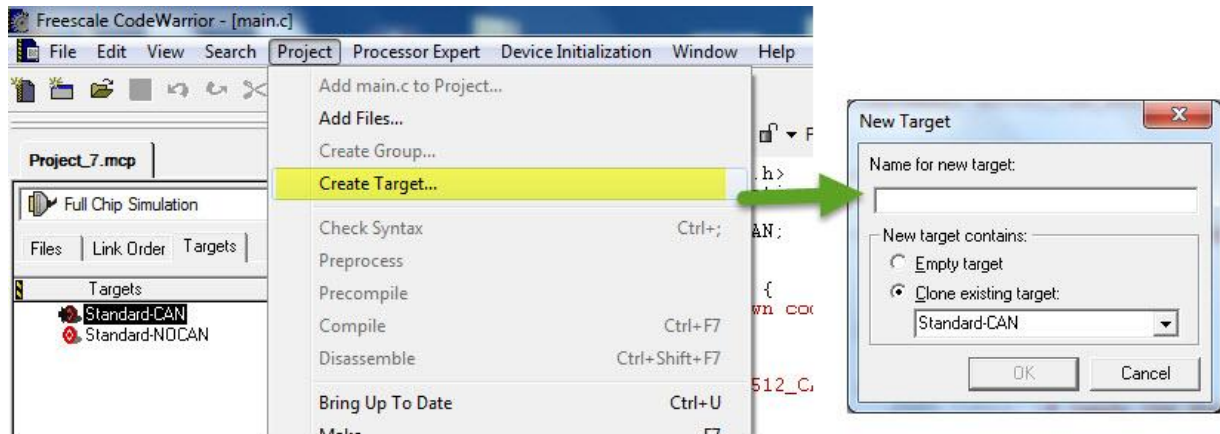
In the following article I will discuss this topic with Classic CodeWarrior and Eclipse CodeWarrior10.x/KDS separately.

## 1. Multiple Target Support in Classic CodeWarrior

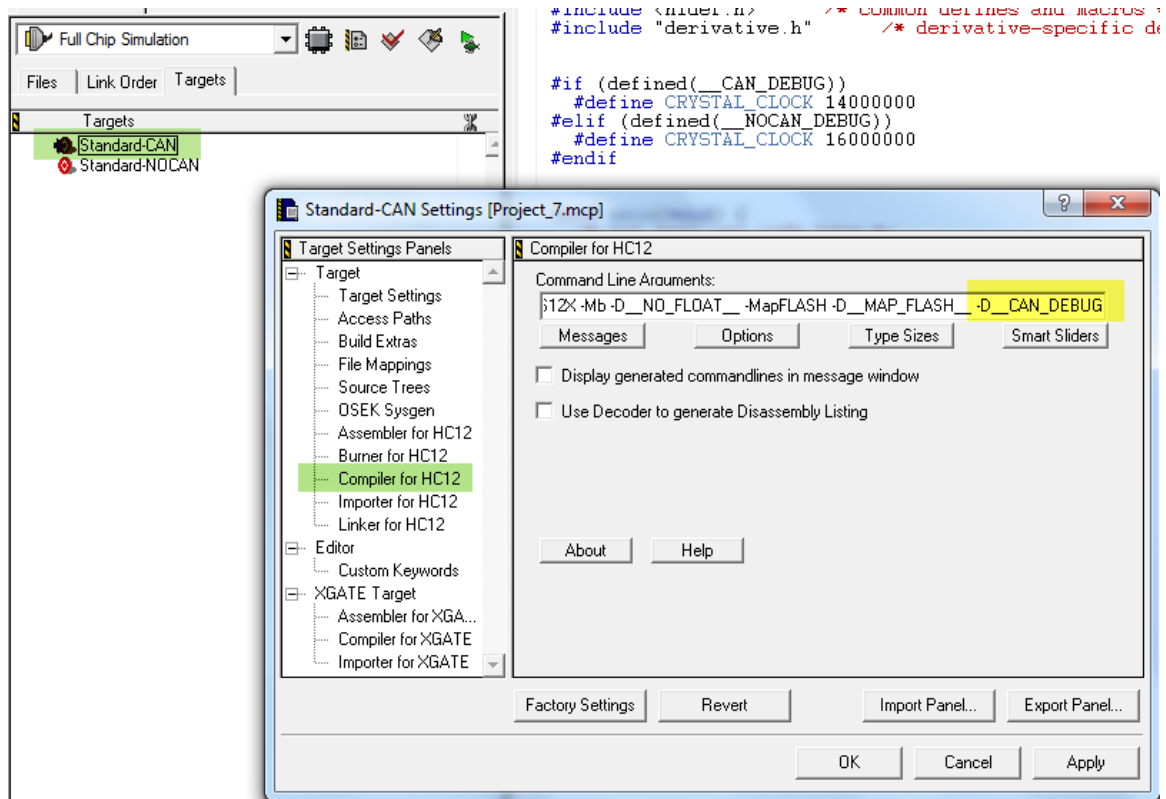
### 1.1 One file identifying multiple targets

We will discuss it with example step by step (based on CodeWarrior for HCS12(X) v5.1 ):

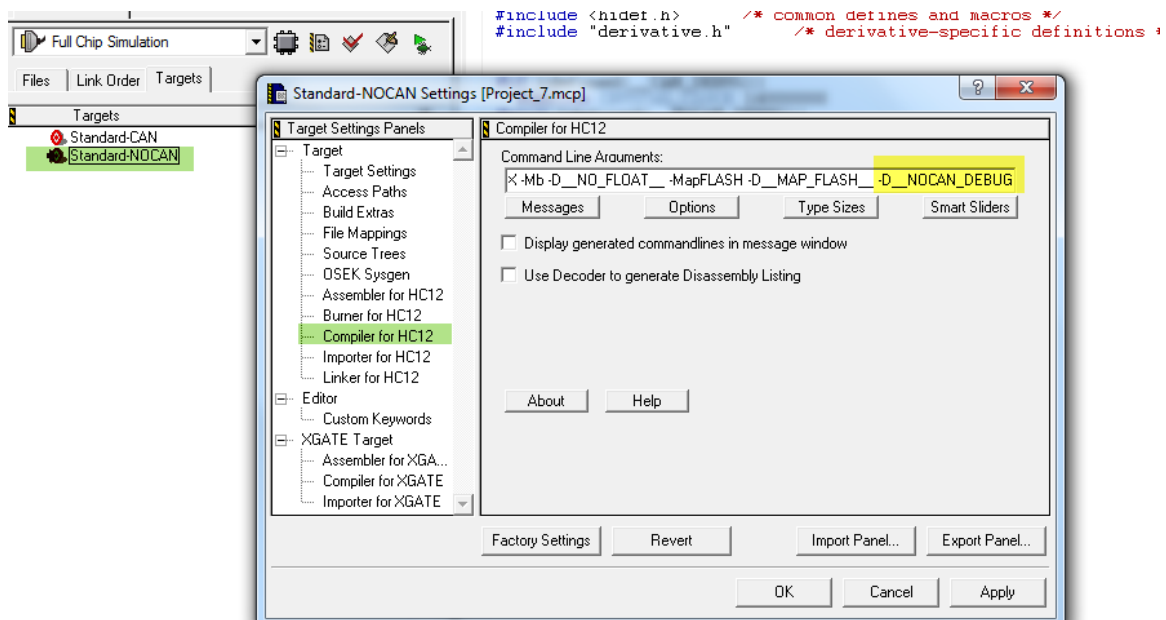
Step 1. Create a new target, the two targets name can be "Standard-CAN", "Standard-NOCAN"



Step 2. Set macro in each of the target compiler command line. For target Standard-CAN, define macro `__CAN_DEBUG`; for target Standard-NOCAN, define macro `__NOCAN_DEBUG`.



Compiler command line setting for Standard-CAN target



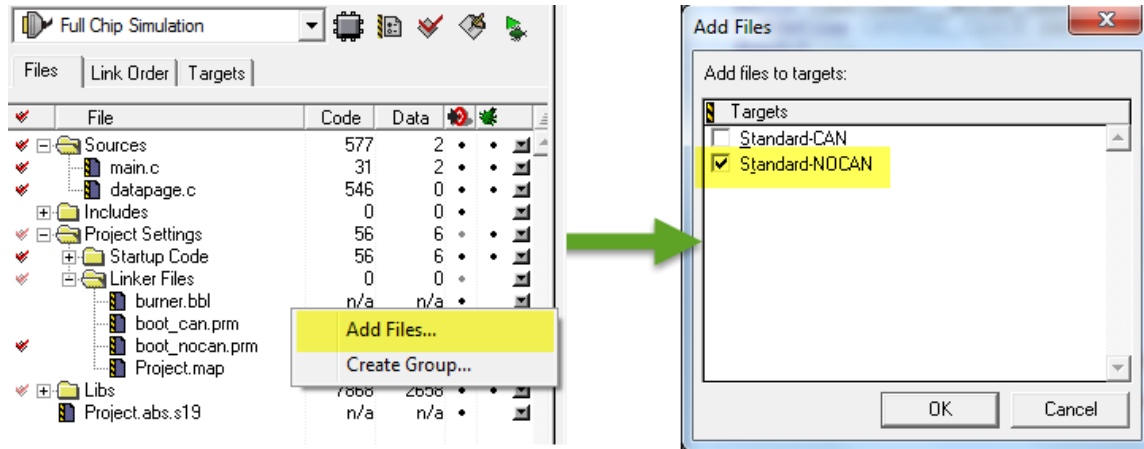
Compiler command line setting for Standard-NOCAN target

Step 3. in C code, use this code to identify different target

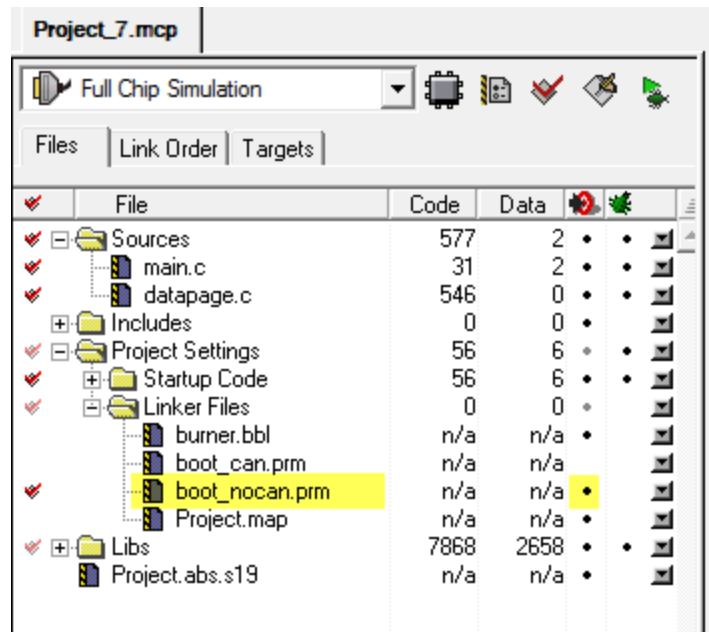
```
#if (defined(__CAN_DEBUG))
#define CRYSTAL_CLOCK 14000000
#elif (defined(__NOCAN_DEBUG))
#define CRYSTAL_CLOCK 16000000
#endif
```

### 1.2 One file for specific target only

Right click in project management window, “Add Files...”, choose the selected file we need to add, then “Add Files” windows will pop up: here, if the file is only valid to Standard-NOCAN target, we check “to Standard-NOCAN” only.



After above step you will see the black dot show under the target column for Standard-NOCAN target only. This means boot\_nocan.prm is only available for Standard-NOCAN target.



The same method is also workable for .c, .asm, .prm,.h,etc file.

Thus we can set different prm file to different target. User can even link different s19 file in each target prm file. This is useful when different targets need to link different bootloader files. For example with below code in boot\_nocan.prm file for Standard-NOCAN:

```
HEXFILE boot_nocan.s19
```

when build Standard-NOCAN target, boot\_nocan.s19 will be merged in final generated project s19 file Standard-NOCAN target only.

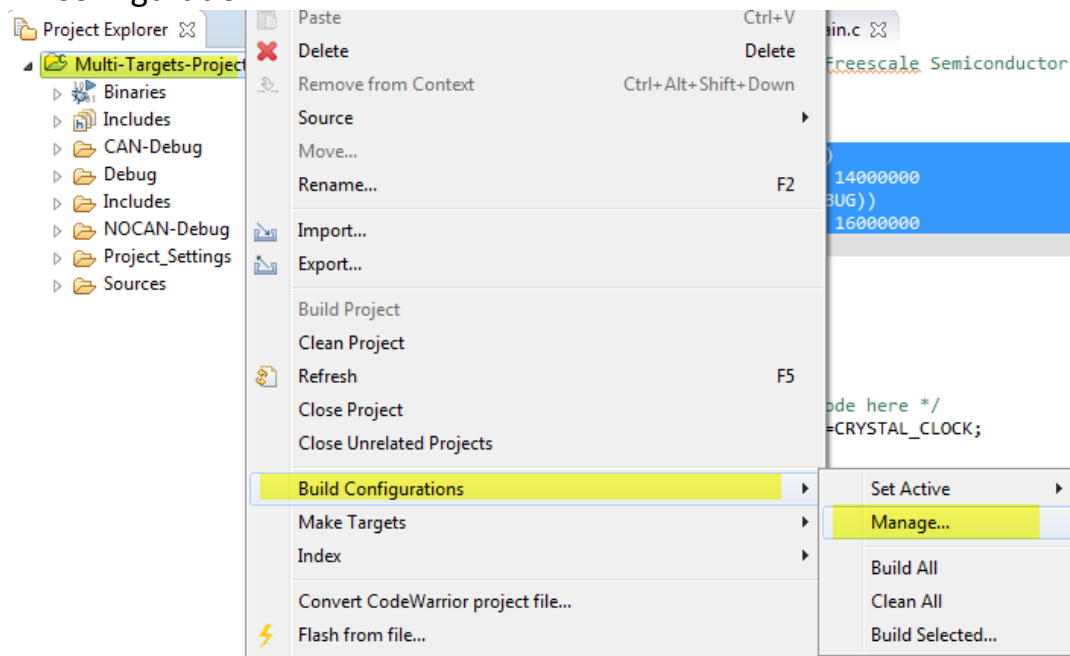
## 2. Multiple Build Configuration Support in Eclipse CodeWarrior and KDS

### 2.1 One file identifying Multiple build configurations

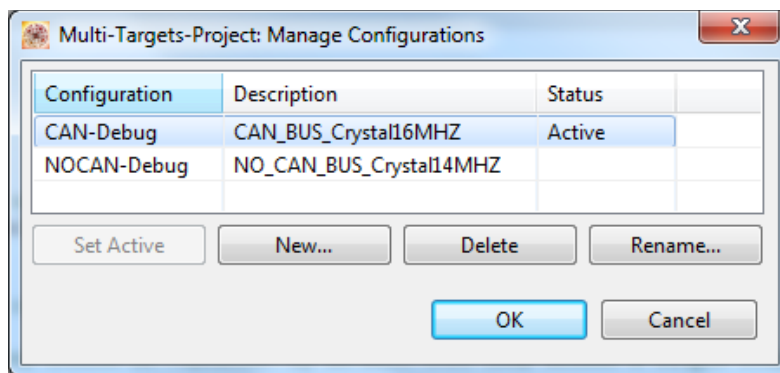
Eclipse CodeWarrior and KDS use “Build Configuration” which is similar with the “Target” in Classic CodeWarrior.

We will discuss it with example step by step ( based on KDS3.2 ):

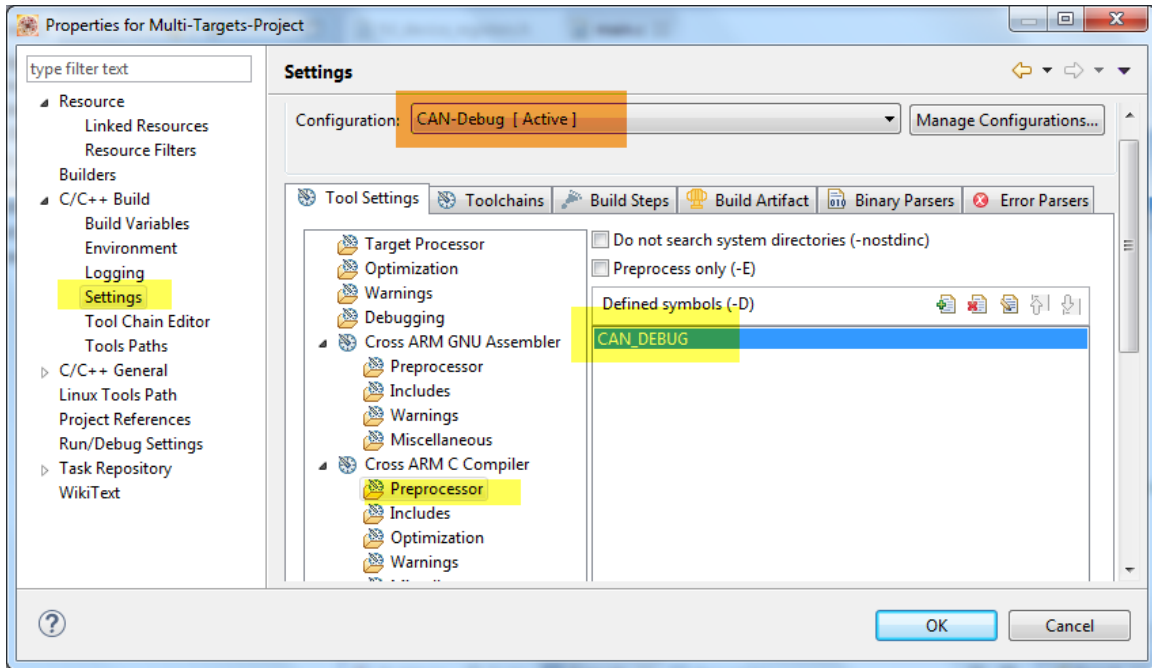
Step 1. Create a new build configuration. Right click on the project name, “Build Configurations”, “Manage...”, “New” to create a new Build Configuration.



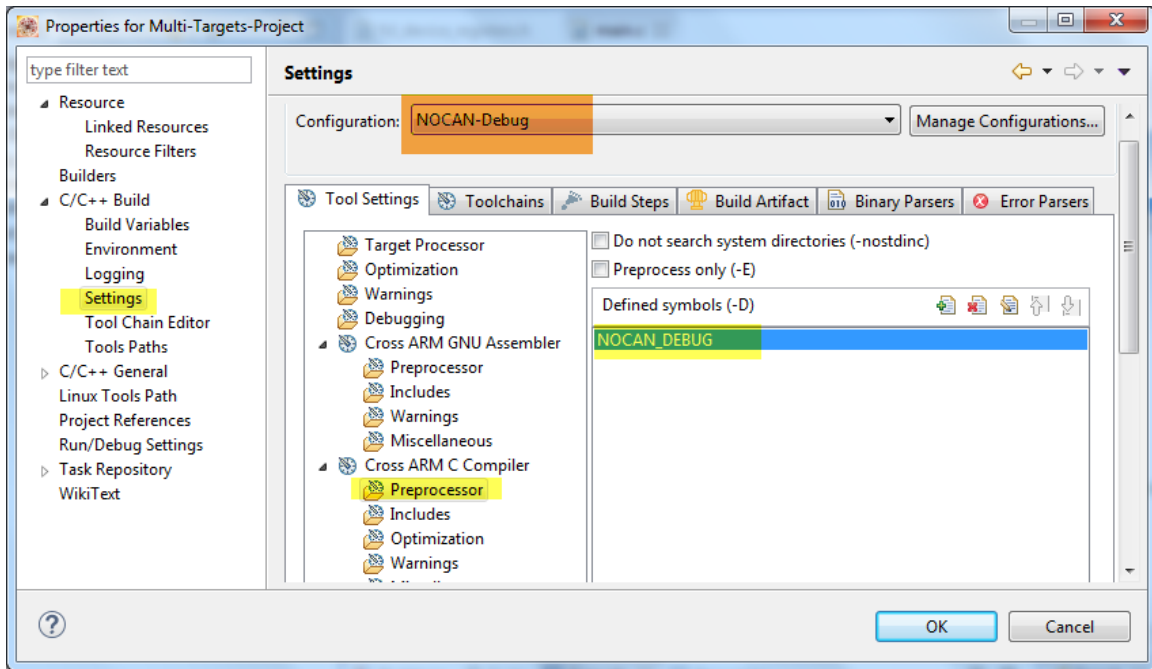
Now two build configurations are set well:



Step 2. Set macro in each of the target compiler command line. For Build Configuration CAN-Debug, define macro CAN\_DEBUG; for Build Configuration NOCAN-Debug, define macro NOCAN\_DEBUG.

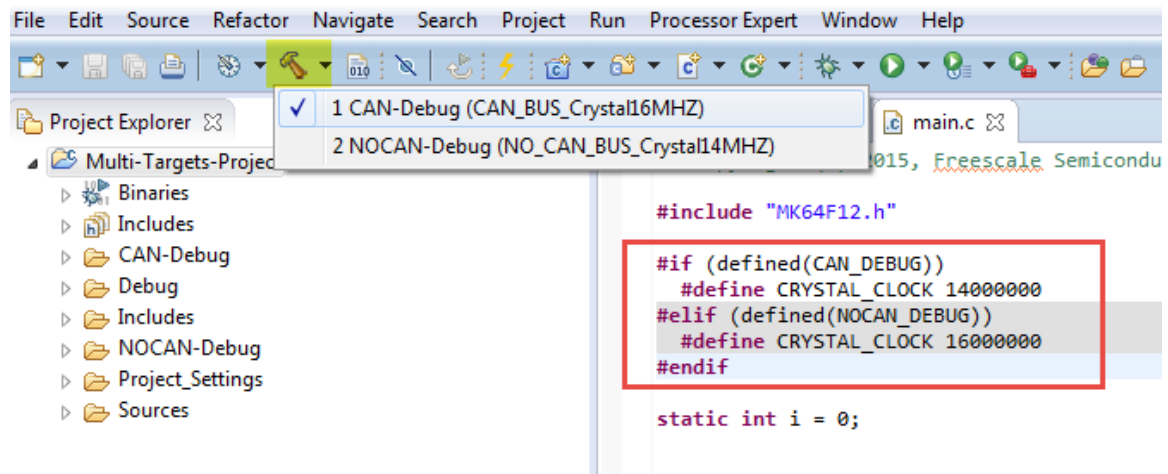


Preprocessor setting for “CAN-Debug” Configuration



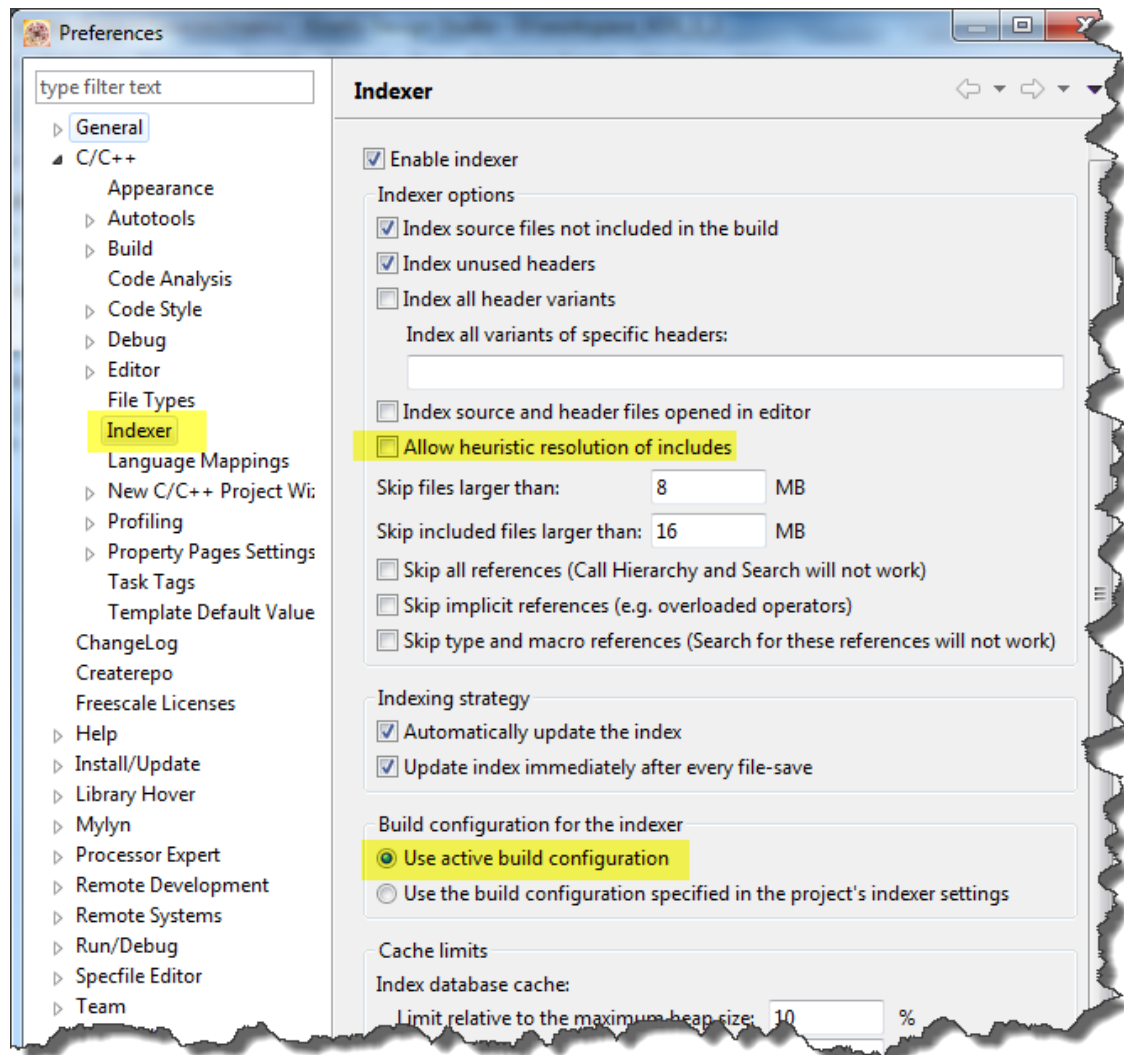
Preprocessor setting for “NOCAN-Debug” Configuration

Step 3. in C code, use following code to identify different build configuration in eclipse.



Please note, to well work with this feature, please disable “heuristic resolution” and enable “use active build configuration in workspace preference setting:



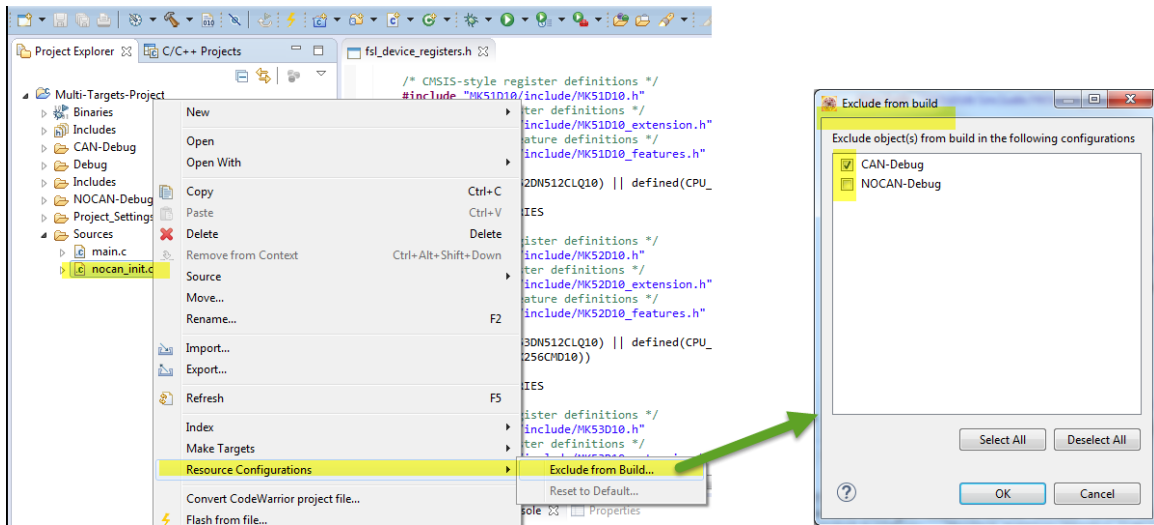


For more information on this topic, See Article from Erich:

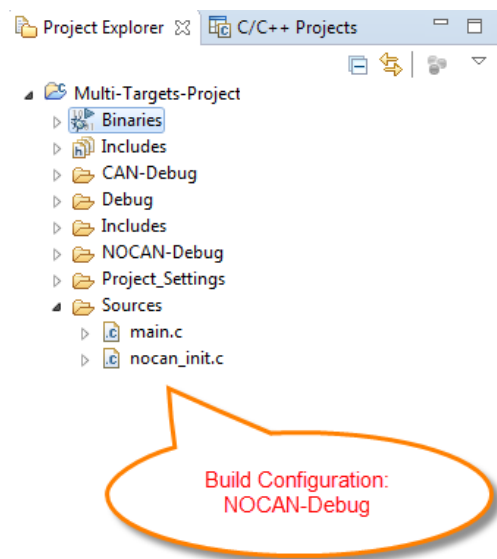
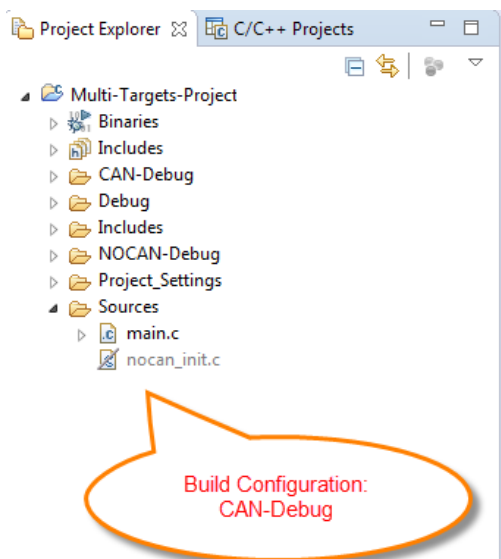
<https://mcuoneclipse.com/2012/03/20/fixing-the-eclipse-index/>

## 2.2 One file for specific build configuration only

By default, Eclipse CodeWarrior/KDS project build all the files existing in the project folder. If we want to exclude a file from one build configuration, for instance, exclude nocan\_init.c from Build Configuration "CAN-Debug", right click on the file, then choose "Resource Configurations", "Exclude from build.." check "CAN-Debug". Thus, file nocan\_init.c is for build configuration "NOCAN-Debug" only.



after that you will see nocan\_init.c is gray out with CAN-Debug configuration. This means nocan\_init.c is only available for NOCAN-Debug.



The same method is also workable for .c, .asm, .prm,.ld,.h file.

Thus we can set different build command line for different build configuration. User can even link different s19 file in Post-build. This is useful when different application build configuration needs to link different bootloader files. Just link the bootloader burning file in each build configuration command line accordingly.

For more information about this topic, prefer this article for how-to merge multiple s19 file with GNU objcopy:

<https://mcuoneclipse.com/2013/10/29/s-record-manipulation-with-gnu-objcopy-and-burner-utility/>