

# Android™ Quick Start Guide

## Contents

1	Overview.....	1
2	Hardware Requirements.....	1
3	Working with the i.MX 6Quad/6DualLite SABRE-SD Board and Platform.....	2
4	Working with the i.MX 6QuadPlus/6Quad/ 6DualLite SABRE-AI Platform.....	7
5	Working with the i.MX 6 SoloLite EVK Board.....	15
6	Working with the i.MX 6SoloX SABRE- SD Board.....	19
7	Working with the i.MX 6SoloX SABRE- AI Board.....	23
8	Working with the i.MX 7Dual SABRE- SD Board.....	28
9	Revision History.....	32

## 1 Overview

This document guides you through the processes of downloading and running this release package. It only explains how to download and run the default release image with default configuration. For details on using the release package, see the *Android™ User's Guide (AUG)* included in this release package.

## 2 Hardware Requirements

The hardware requirements for using this release package are as follows:

Supported system-on-chips (SoCs):

- i.MX 6Dual/6Quad
- i.MX 6Solo/6DualLite
- i.MX 6SoloLite
- i.MX 6SoloX
- i.MX 7Dual
- i.MX 6QuadPlus

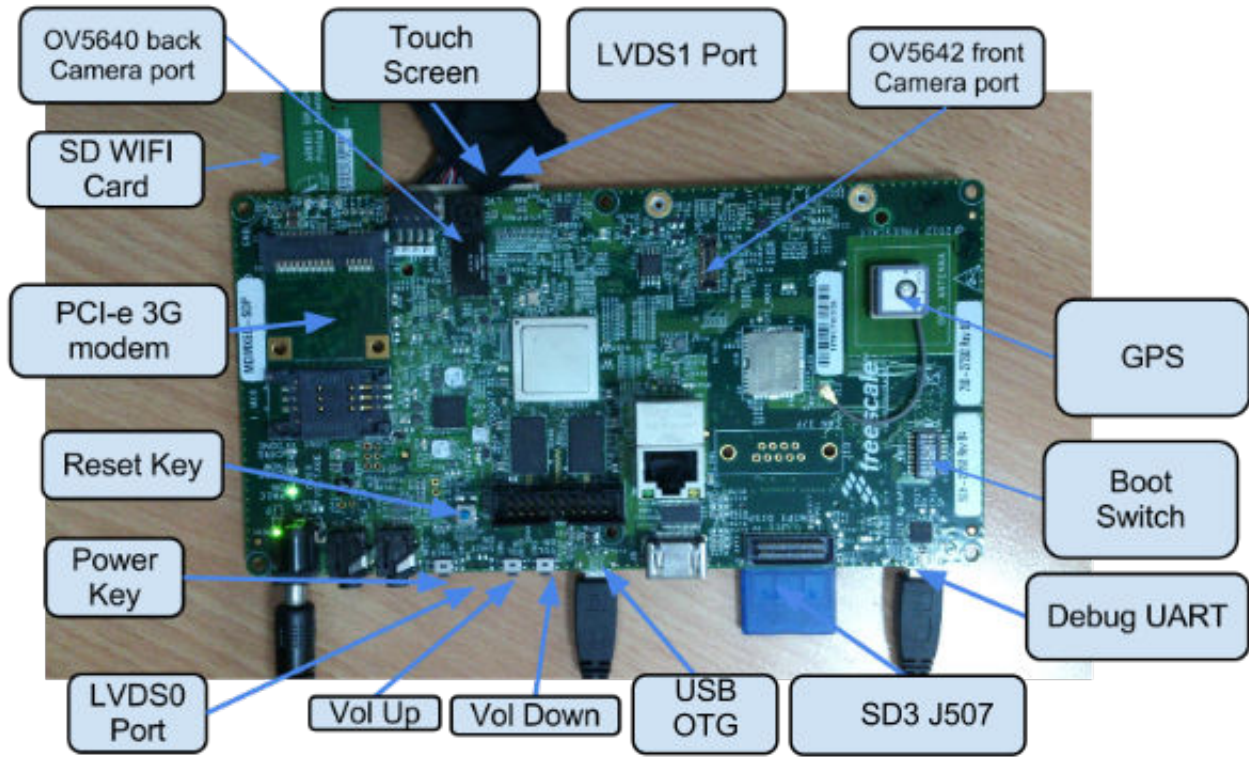
Supported boards:

- SABRE-SD board and platform
- SABRE-AI board
- EVK board

### 3 Working with the i.MX 6Quad/6DualLite SABRE-SD Board and Platform

#### 3.1 Board hardware

The figure below shows the different components of the SABRE-SD board.



**Figure 1. SABRE-SD Board**

**NOTE**

Due to a known limitation of the hardware/SoC, the power key on the RevB or older versions of the SABRE-SD board cannot be used as the normal power key. Therefore, the VOL\_DOWN key is mapped as the power key. The VOL\_DOWN key was not available on previous boards.

#### 3.2 Board images

The table below describes the locations of the software images in release\_package/android\_L5.1.1\_2.1.0-ga\_full\_image\_6qsabresd.tar.gz on board partitions.

**Table 1. Board images**

Image name	Path in release package	Download target
------------	-------------------------	-----------------

*Table continues on the next page...*

**Table 1. Board images (continued)**

u-boot-imx6q.imx	\	eMMC or SD card first 8 MB section
u-boot-imx6dl.imx	\	eMMC or SD card first 8 MB section
boot-imx6q.img	\eMMC	eMMC 1st partition for 800 MB or 1 GB HZ i.MX 6DualQuad
boot-imx6q-ldo.img	\eMMC	eMMC 1st partition for 1.2G HZ i.MX 6DualQuad
boot-imx6dl.img	\eMMC	eMMC 1st partition for i.MX 6DualLite
boot-imx6q.img	\SD	SD card 1st partition for 800 MB or 1 GB HZ i.MX 6DualQuad
boot-imx6q-ldo.img	\SD	SD card 1st partition for 1.2 GB HZ i.MX 6DualQuad
boot-imx6dl.img	\SD	SD card 1st partition for i.MX 6DualLite
recovery-imx6q.img	\eMMC	eMMC 2nd partition for 800 MB or 1 GB HZ i.MX 6DualQuad
recovery-imx6q-ldo.img	\eMMC	eMMC 2nd partition for 1.2 GB HZ i.MX 6DualQuad
recovery-imx6dl.img	\eMMC	eMMC 2nd partition for i.MX 6DualLite
recovery-imx6q.img	\SD	SD card 2nd partition for 800 MB or 1 GB HZ i.MX 6DualQuad
recovery-imx6q-ldo.img	\SD	SD card 2nd partition for 1.2 GB HZ i.MX 6DualQuad
recovery-imx6dl.img	\SD	SD card 2nd partition for i.MX 6DualLite
system.img	\eMMC	eMMC 5th partition
system.img	\SD	SD card 5th partition

### 3.3 Downloading board images

The board images can be downloaded to the target board by using the MFGTool. The release package includes MFGTool for i.MX 6Dual/6Quad, i.MX 6Solo/6DualLite, i.MX 6SoloX, i.MX 6SoloLite, and i.MX 7Dual in android\_L5.1.1\_2.1.0-ga\_tools.tar.gz. The MFGTool is mfgtools.tar.gz.

#### NOTE

The MFGTool only works in the Windows® Operating System (OS) environment.

Perform the following steps to download the board images:

#### NOTE

The steps given below take i.MX 6Dual/6Quad as the example SoC. For i.MX 6Solo/6DualLite, replace 'MX6Q' with 'MX6DL' and '6q' with '6dl.'

1. Unzip the mfgtools.tar.gz file to a selected location. The directory is named MFGTool-Dir in this example.
2. If the directory does not exist, create the *android/sabresd* directory under *MFGTool-Dir/Profiles/Linux/OS Firmware/files/*.
3. Copy the following files from either *android\_L5.1.1\_2.1.0-ga\_core\_image\_6qsabresd.tar.gz* or *android\_L5.1.1\_2.1.0-ga\_full\_image\_6qsabresd.tar.gz* to the *MFGTool-Dir/Profiles/Linux/OS Firmware/files/android/sabresd* path.
  - u-boot-imx6q.imx
  - eMMC/boot-imx6q.img
  - eMMC/system.img
  - eMMC/recovery-imx6q.img

**NOTE**

Do not replace any other files in the files directory and the OS Firmware directory. To download images for the i.MX 6DualLite/6Solo SABRE-SD boards, replace the name "imx6q" in step 3 with "imx6dl".

To download the images for the 1.2GB HZ i.MX 6DualQuad SABRE-SD boards, replace the name "imx6q" in step 3 with "imx6q-ldo".

- No dedicated boot dips are reserved for serial download mode on SABRE-SD board. Therefore, a tricky method is used to enter serial download mode. Change the SABRE-SD SW6 (boot) to 00001100 (from 1-8 bit) to enter download mode.
- Power on the board. Using USB cable on the SABRE-SD OTG port, connect a computer running Windows OS to the SABRE-SD board.

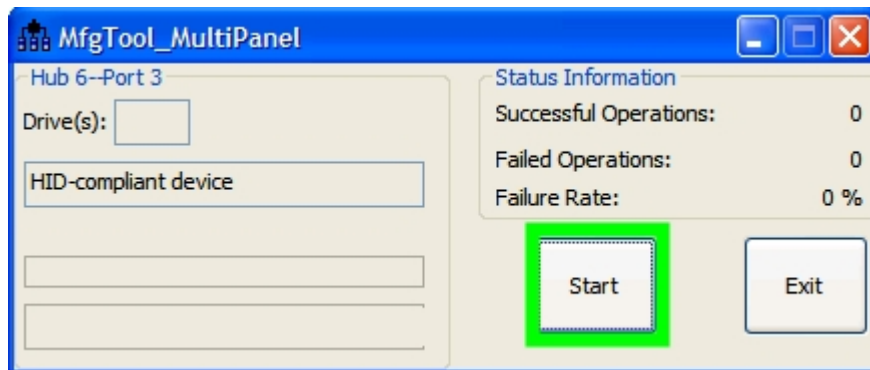
**NOTE**

There are two USB micro ports on the SABRE-SD board: USB to UART and USB OTG. USB to UART is referred to as debug UART, and the USB OTG is referred to as USB in the hardware image above. The debug UART can be used to monitor the log of the hardware boot processing.

- Double-click the file \*.vbs according to the target device as shown in the following table.

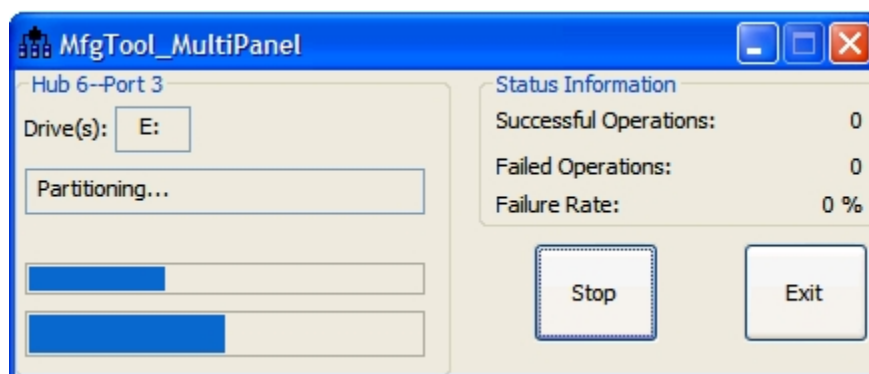
Target device and boot storage	VBS file
i.MX 6Dual/6Quad (800M HZ or 1G HZ) SABRE-SD eMMC	mfgtool2-android-mx6q-sabresd-emmc.vbs
i.MX 6Dual/6Quad (1.2G HZ) SABRE-SD eMMC	mfgtool2-android-mx6q-sabresd-emmc-1.2g.vbs
i.MX 6Dual/6Quad (800M HZ or 1G HZ) SABRE-SD SD	mfgtool2-android-mx6q-sabresd-sd.vbs
i.MX 6Dual/6Quad (1.2G HZ) SABRE-SD SD	mfgtool2-android-mx6q-sabresd-sd-1.2g.vbs
i.MX 6Solo/6DualLite SABRE-SD eMMC	mfgtool2-android-mx6dl-sabresd-emmc.vbs
i.MX 6Solo/6DualLite SABRE-SD SD	mfgtool2-android-mx6dl-sabresd-sd.vbs

- Click **Start** to start downloading images.



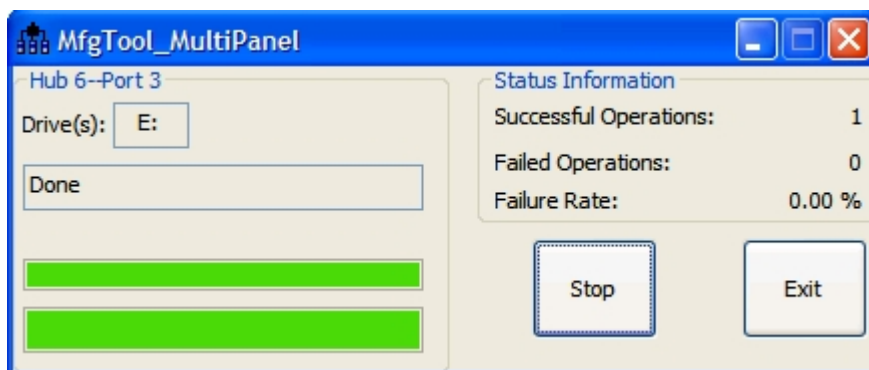
**Figure 2. Starting download**

The figure below shows downloading in progress, and the status bar shows the download status. The download may take one to two minutes depending on the host machine.



**Figure 3. Download status**

The figure below shows the tool once the download is complete.



**Figure 4. Download complete**

8. Click **Stop**.
9. Change "Boot Switch(SW6)" to 11100110 (from 1 bit to 8 bit) to switch the board back to eMMC 4-bit boot mode.  
Change "Boot Switch(SW6)" to 11010110 (from 1 bit to 8 bit) to switch the board back to eMMC 8-bit boot mode.

## 3.4 Booting

When the Android system image is programmed and the Boot Switch(es) is configured, the system is ready to be powered on.

There are three hardware displays supported in this release: two LVDS display panels and an HDMI output.

- To enable the LVDS1 display, see Section [Booting with single display: LVDS display](#).
- To enable single HDMI display, see Section [Booting with single display: HDMI display](#).
- To enable LVDS1 and HDMI output dual display feature, see Section [Booting with dual displays: LVDS and HDMI displays](#).

### NOTE

There are two LVDS ports in SABRE SD hardware: LVDS0 and LVDS1. LVDS1 is taken as the primary display in this release. The LVDS1 port is a nearby miniPCIe interface (see the SABRE-SD board image above).

### 3.4.1 Booting with single display: LVDS display

In the U-Boot prompt, set the U-Boot environment variables as shown below:

```
U-Boot > setenv bootcmd boota mmc2
U-Boot > setenv bootargs console=ttyMxc0,115200 init=/init video=mxcfb0:dev=ldb,bpp=32
video=mxcfb1:off video=mxcfb2:off video=mxcfb3:off vmlalloc=256M androidboot.console=ttyMxc0
consoleblank=0 androidboot.hardware=freescale cma=384M
U-Boot > saveenv
```

With the settings above, the Android platform does not start the shell console. It enables the default Android selinux and dm\_verity security features, which restrict users to change the system and detect the system information. To avoid this, "androidboot.selinux=disabled" and "androidboot.dm\_verity=disabled" need to be appended to the U-Boot's bootargs. Boot environment variables are as follows:

```
U-Boot > setenv bootcmd boota mmc2
U-Boot > setenv bootargs console=ttyMxc0,115200 init=/init video=mxcfb0:dev=ldb,bpp=32
video=mxcfb1:off video=mxcfb2:off video=mxcfb3:off vmlalloc=256M androidboot.console=ttyMxc0
consoleblank=0 androidboot.hardware=freescale cma=384M androidboot.selinux=disabled
androidboot.dm_verity=disabled
U-Boot > saveenv
```

### 3.4.2 Booting with single display: HDMI display

In the U-Boot prompt, set the U-Boot environment variables as shown below:

```
U-Boot > setenv bootcmd boota mmc2
U-Boot > setenv bootargs console=ttyMxc0,115200 androidboot.console=ttyMxc0 consoleblank=0
vmlalloc=256M init=/init video=mxcfb0:dev=hdmi,1920x1080M@60,bpp=32 video=mxcfb1:off
video=mxcfb2:off video=mxcfb3:off androidboot.hardware=freescale cma=384M
U-Boot > saveenv
```

With the settings above, the Android platform does not start the shell console. It enables the default Android selinux and dm\_verity security features, which restrict users to change the system and detect the system's information. To avoid this, "androidboot.selinux=disabled" and "androidboot.dm\_verity=disabled" need to be appended to the U-Boot's bootargs. Boot environment variables are as follows:

```
U-Boot > setenv bootcmd boota mmc2
U-Boot > setenv bootargs console=ttyMxc0,115200 androidboot.console=ttyMxc0 consoleblank=0
vmlalloc=256M init=/init video=mxcfb0:dev=hdmi,1920x1080M@60,bpp=32 video=mxcfb1:off
video=mxcfb2:off video=mxcfb3:off androidboot.hardware=freescale cma=384M
androidboot.selinux=disabled androidboot.dm_verity=disabled
U-Boot > saveenv
```

### 3.4.3 Booting with dual displays: LVDS and HDMI displays

In the U-Boot prompt, set the U-Boot environment variables as shown below:

```
U-Boot > setenv bootcmd boota mmc2
U-Boot > setenv bootargs console=ttyMxc0,115200 androidboot.console=ttyMxc0 consoleblank=0
vmlalloc=256M init=/init video=mxcfb0:dev=ldb,bpp=32 video=mxcfb1:dev=hdmi,
1920x1080M@60,bpp=32 video=mxcfb2:off video=mxcfb3:off androidboot.hardware=freescale
cma=384M
U-Boot > saveenv
```

With the settings above, the Android platform does not start the shell console. It enables the default Android selinux and dm\_verity security features, which restrict users to change the system and detect the system's information. To avoid this, "androidboot.selinux=disabled" and "androidboot.dm\_verity=disabled" need to be appended to the U-Boot's bootargs. Boot environment variables are as follows:

```
U-Boot > setenv bootcmd boota mmc2
U-Boot > setenv bootargs console=ttyMxc0,115200 androidboot.console=ttyMxc0 consoleblank=0
vmlalloc=256M init=/init video=mxcfb0:dev=ldb,bpp=32 video=mxcfb1:dev=hdmi,
```

```
1920x1080M@60,bpp=32 video=mxcfb2:off video=mxcfb3:off androidboot.hardware=freescale  
cma=384M androidboot.selinux=disabled androidboot.dm_verity=disabled  
U-Boot > saveenv
```

## 3.5 Board reboot

After completing download and setup, reboot the board and wait for the Android platform to boot up.

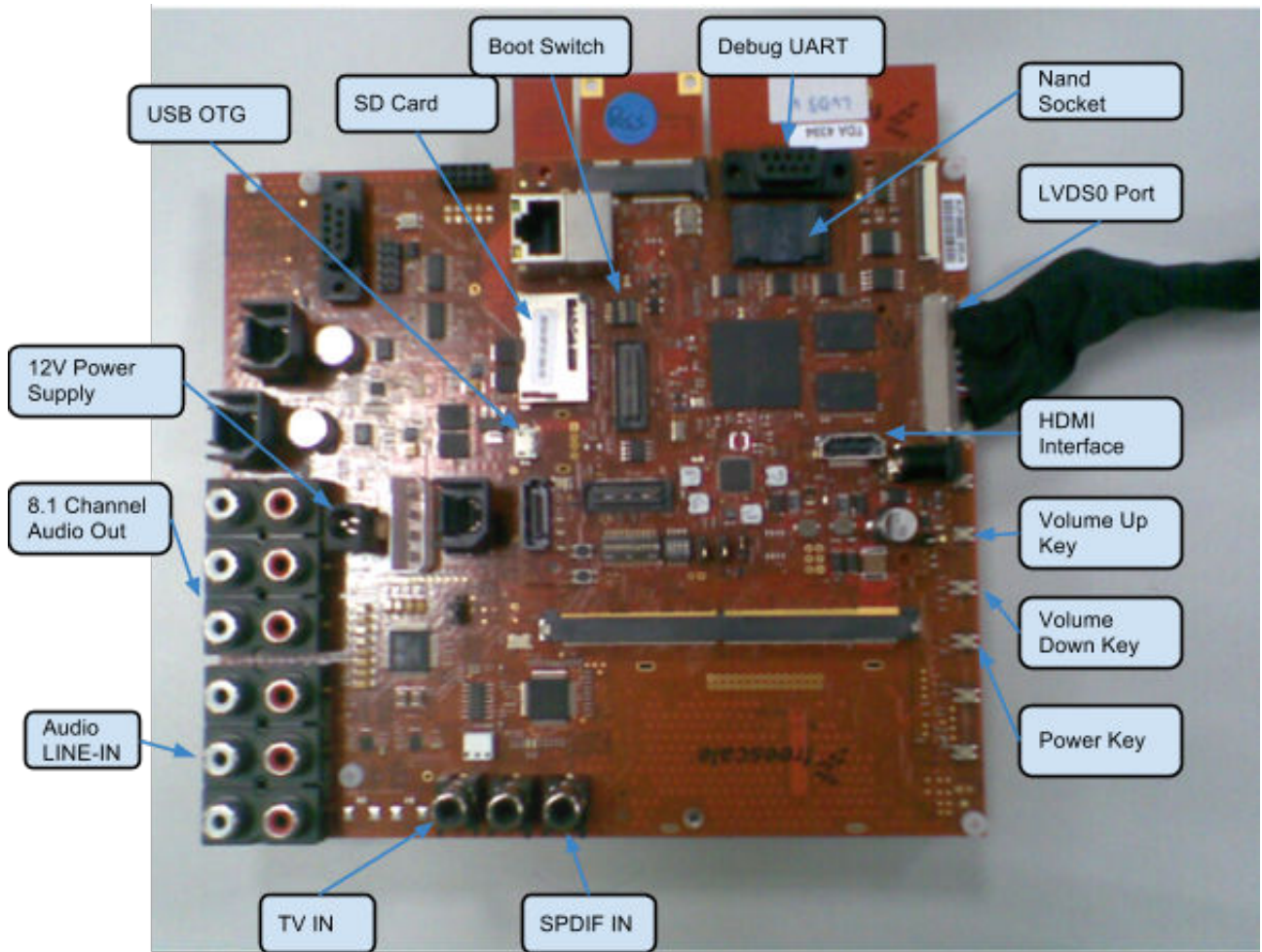


Figure 5. Android Lollipop image

## 4 Working with the i.MX 6QuadPlus/6Quad/6DualLite SABRE-AI Platform

### 4.1 Board hardware

The following figure shows the different components of the i.MX 6Quad/6DualLite SABRE-AI board.



**Figure 6. i.MX 6Quad/6DualLite SABRE-AI board**

The following figure shows the different components of the i.MX 6QuadPlus SABRE-AI board.



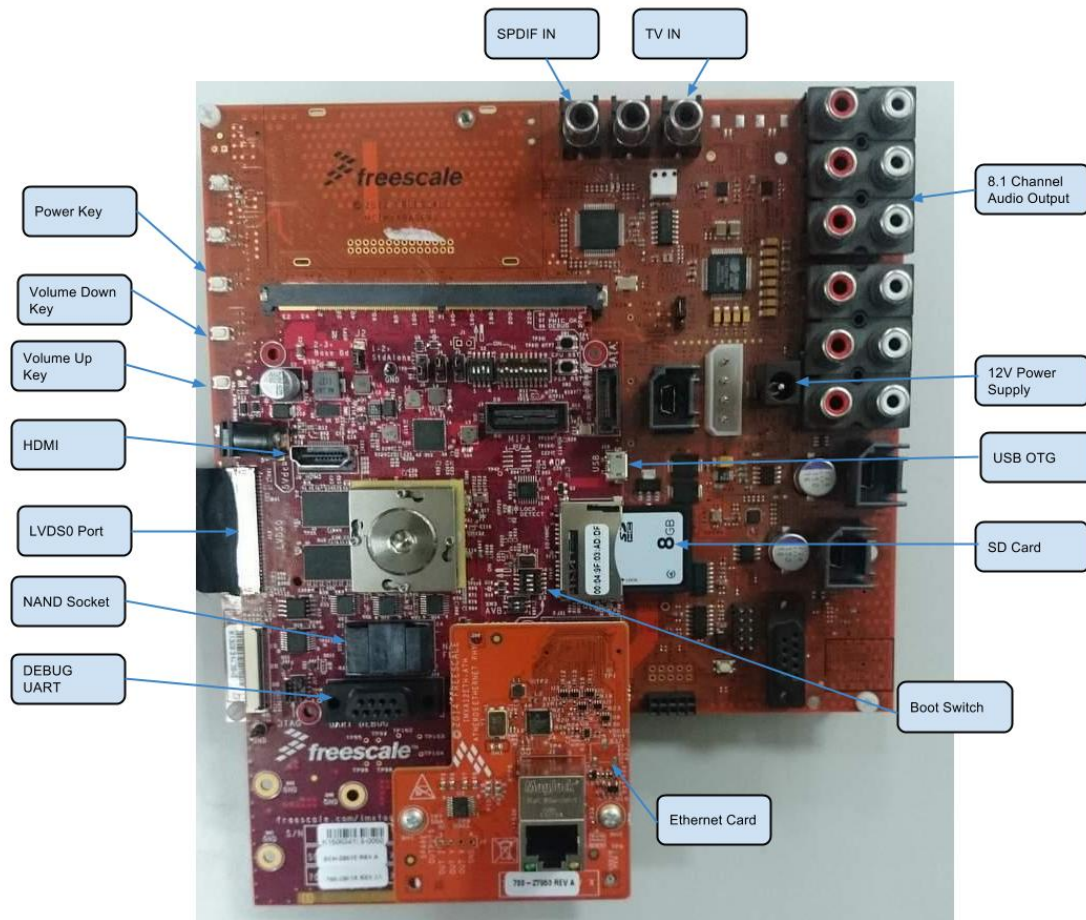


Figure 7. i.MX 6QuadPlus SABRE-AI Board

## 4.2 Board images

The table below describes the location in the board partitions of the software images in android\_L5.1.1\_2.1.0-ga\_full\_image\_6qsabreauto.tar.gz on board partitions.

Table 2. Board images

Image name	Path in release package	Download target
u-boot-imx6q.imx u-boot-imx6dl.imx u-boot-imx6qp.imx	\	SD first 8 MB block
boot-imx6q.img boot-imx6dl.img boot-imx6qp.img	\SD	SD 1st partition
recovery-imx6q.img	\SD	SD 2nd partition

Table continues on the next page...

**Table 2. Board images (continued)**

recovery-imx6dl.img		
recovery-imx6qp.img		
system.img	\SD	SD 5th partition
u-boot-imx6dl-nand.img	\	NAND 1st 64 MB MTD partition
u-boot-imx6q-nand.img		
u-boot-imx6qp-nand.img		
boot-imx6q-nand.img	\NAND	NAND 2nd 16 MB MTD partition
boot-imx6dl-nand.img		
boot-imx6qp-nand.img		
recovery-imx6q-nand.img	\NAND	NAND 3rd 16 MB MTD partition
recovery-imx6dl-nand.img		
recovery-imx6qp-nand.img		
android_root.img	\NAND	UBIFS Volume for 4th MTD partition

### 4.3 Downloading board images

The board images can be downloaded to the target board by using the MFGTool. The release package includes MFGTool for i.MX 6Dual/6Quad, i.MX 6Solo/6DualLite, i.MX 6SoloX, i.MX 6SoloLite, i.MX 6QuadPlus, and i.MX 7Dual in `android_L5.1.1_2.1.0-ga_tools.tar.gz`. The MFGTool is `mfgtools.tar.gz`.

#### NOTE

The MFGTool only works in Windows OS environment.

Perform the following steps to download the board images:

#### NOTE

The steps given below take i.MX 6Dual/6Quad as the example SoC. For i.MX 6Solo/6DualLite, replace 'MX6Q' with 'MX6DL' and '6q' with '6dl.' For i.MX 6QuadPlus, replace 'MX6Q' with 'MX6QP' and '6q' with '6qp.'

1. Unzip the `mfgtools.tar.gz` file to a selected location. The directory is named `MFGTool-Dir` in this example.
2. If the directory does not exist, create the "*android*" directory under the *MFGTool-Dir/Profiles/Linux/OS Firmware/files* directory.
3. Copy following files from either *release\_package/android\_L5.1.1\_2.1.0-ga\_core\_image\_6qsabreauto.tar.gz* or *release\_package/android\_L5.1.1\_2.1.0-ga\_full\_image\_6qsabreauto.tar.gz* to the *MFGTool-Dir/Profiles/Linux/OS Firmware/files/android/sabreauto* path.
  - `u-boot-imx6q.imx`
  - `SD/boot-imx6q.img`
  - `SD/system.img`
  - `SD/recovery.img`

#### NOTE

Do not replace any other files in the files directory and the OS Firmware directory. When using the NAND boot, the files are in "nand" folder. Use `android_root.img` instead of `system.img`. The bootloader should be `u-boot-mx6q-nand.bin`.

To download images for the i.MX 6DualLite/6Solo SABRE-AI boards, replace the name "imx6q" in step 3 with "imx6dl".

To download images for i.MX 6QuadPlus SABRE-AI boards, replace the name "imx6q" in Step 3 with "imx6qp" for i.MX 6QuadPlus SABRE-AI boards.

4. Change SABRE-AI S3 (boot mode) to 0101 (from 1 bit to 4 bit) to enter download mode.
5. Power on the board. Using USB cable on the SABRE-AI OTG port, connect a computer running Windows OS to the SABRE-AI board.

**NOTE**

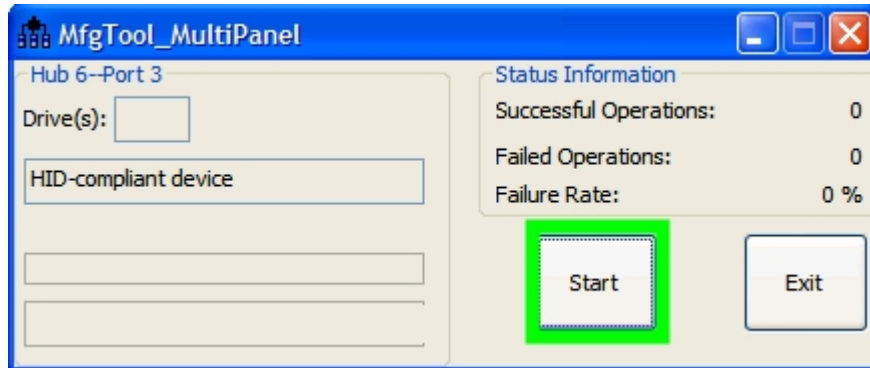
The USB micro port in SABRE-AI is J10.

6. Double-click the \*.vbs file according to the target device as shown in the following table.

**Table 3. SABRE-AI VBS file**

Target device	VBS file
i.MX 6Dual/6Quad SABRE-AI SD	mfgtool2-android-mx6q-sabreauto-sdcard.vbs
i.MX 6Dual/6Quad SABRE-AI NAND	mfgtool2-android-mx6q-sabreauto-nand.vbs
i.MX 6Solo/6DualLite SABRE-AI SD	mfgtool2-android-mx6dl-sabreauto-sdcard.vbs
i.MX 6Solo/6DualLite SABRE-AI NAND	mfgtool2-android-mx6dl-sabreauto-nand.vbs
i.MX 6QuadPlus SABRE-AI SD	mfgtool2-android-mx6qp-sabreauto-sdcard.vbs
i.MX 6QuadPlus SABRE-AI NAND	mfgtool2-android-mx6qp-sabreauto-nand.vbs

7. Click **Start** to start downloading images.



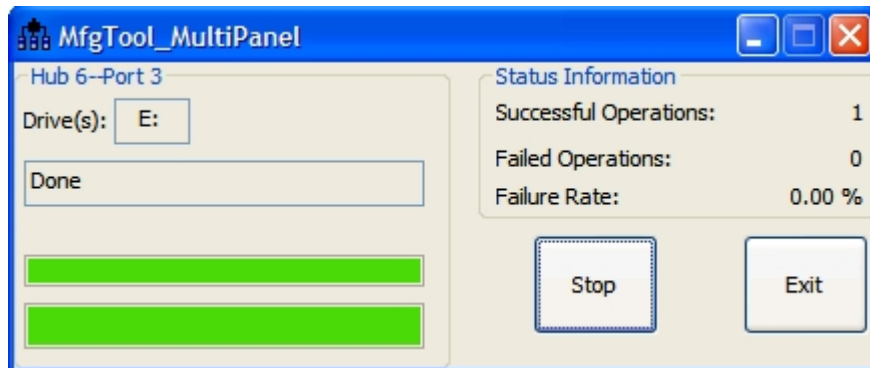
**Figure 8. Starting download**

The figure below shows downloading in progress, and the status bar shows the download status. The download may take one to two minutes depending on the host machine.



**Figure 9. Download status**

The figure below shows the tool once the download is complete.



**Figure 10. Download complete**

8. Click **Stop**.
9. Change the board boot switch to (S3, S2,S1) 0010, 0010,0100100000 (from 1 bit) to boot from SD on CPU Board .  
Change the board boot switch to (S3, S2,S1) 0010, 0001,0001000000 (from 1 bit) to boot from NAND.

## 4.4 Booting

When the Android system image is programmed and the Boot Switch(es) is configured, the system is ready to be powered on.

There are two hardware displays supported in this release: one LVDS display panel and one HDMI output.

- To enable the LVDS0 display, see Section [Booting with single display: LVDS display](#).
- To enable the HDMI display, see Section [Booting with single display: HDMI display](#).
- To enable LVDS0 and HDMI output dual display feature, see Section [Booting with dual displays: LVDS and HDMI displays](#).

### NOTE

There are two LVDS ports in SabreAuto hardware, LVDS0 and LVDS1. LVDS0 is taken as the primary display in this release. The LVDS0 port is in the CPU board. The LVDS1 is in the base board.

## 4.4.1 Booting with single display: LVDS display

To boot from SD, set the U-Boot environment variables as shown below:

```
U-Boot > setenv bootcmd boota mmc1
U-Boot > setenv bootargs console=ttymx3,115200 init=/init video=mxcfb0:dev=ldb,bpp=32
video=mxcfb1:off video=mxcfb2:off video=mxcfb3:off vmalloc=320M androidboot.console=ttymx3
consoleblank=0 androidboot.hardware=freescale cma=384M
U-Boot > saveenv
```

With the settings above, the Android platform does not start the shell console. It enables the default Android selinux and dm\_verity security features, which restrict users to change the system and detect the system's information. To avoid this, "androidboot.selinux=disabled" and "androidboot.dm\_verity=disabled" need to be appended to the U-Boot's bootargs. Boot environment variables are as follows:

```
U-Boot > setenv bootcmd boota mmc1
U-Boot > setenv bootargs console=ttymx3,115200 init=/init video=mxcfb0:dev=ldb,bpp=32
video=mxcfb1:off video=mxcfb2:off video=mxcfb3:off vmalloc=320M androidboot.console=ttymx3
consoleblank=0 androidboot.hardware=freescale cma=384M androidboot.selinux=disabled
androidboot.dm_verity=disabled
U-Boot > saveenv
```

To boot from NAND, set the U-Boot environment variables as shown below:

```
U-Boot > setenv bootcmd 'nand read 0x12000000 0x4000000 0x1000000;booti 0x12000000'
U-Boot > setenv bootargs console=ttymx3,115200 init=/init video=mxcfb0:dev=ldb,bpp=32
video=mxcfb1:off video=mxcfb2:off video=mxcfb3:off vmalloc=320M androidboot.console=ttymx3
consoleblank=0 androidboot.hardware=freescale mtdparts=gpmi-nand:64m(bootloader),
16m(bootimg),16m(recovery),-(root) ubi.mtd=4 cma=384M
U-Boot > saveenv
```

With the settings above, the Android platform does not start the shell console. It enables the default Android selinux feature, which detect the system's information. To avoid this, "androidboot.selinux=disabled" need to be appended to the U-Boot's bootargs. Boot environment variables are as follows:

```
U-Boot > setenv bootcmd 'nand read 0x12000000 0x4000000 0x1000000;boota 0x12000000'
U-Boot > setenv bootargs console=ttymx3,115200 init=/init video=mxcfb0:dev=ldb,bpp=32
video=mxcfb1:off video=mxcfb2:off video=mxcfb3:off vmalloc=320M androidboot.console=ttymx3
consoleblank=0 androidboot.hardware=freescale mtdparts=gpmi-nand:64m(bootloader),
16m(bootimg),16m(recovery),-(root) ubi.mtd=4 cma=384M androidboot.selinux=disabled
U-Boot > saveenv
```

## 4.4.2 Booting with single display: HDMI display

To boot from SD, set the U-Boot environment variables as shown below:

```
U-Boot > setenv bootcmd boota mmc1
U-Boot > setenv bootargs console=ttymx3,115200 androidboot.console=ttymx3 consoleblank=0
vmalloc=400M init=/init video=mxcfb0:dev=hdmi,1920x1080M@60,bpp=32 video=mxcfb1:off
video=mxcfb2:off video=mxcfb3:off androidboot.hardware=freescale cma=320M
U-Boot > saveenv
```

With the settings above, the Android platform does not start the shell console. It enables the default Android selinux and dm\_verity security features, which restrict users to change the system and detect the system's information. To avoid this, "androidboot.selinux=disabled" and "androidboot.dm\_verity=disabled" need to be appended to the U-Boot's bootargs. Boot environment variables are as follows:

```
U-Boot > setenv bootcmd boota mmc1
U-Boot > setenv bootargs console=ttymx3,115200 androidboot.console=ttymx3 consoleblank=0
vmalloc=320M init=/init video=mxcfb0:dev=hdmi,1920x1080M@60,bpp=32 video=mxcfb1:off
video=mxcfb2:off video=mxcfb3:off androidboot.hardware=freescale cma=384M
androidboot.selinux=disabled androidboot.dm_verity=disabled
U-Boot > saveenv
```

To boot from NAND, set the U-Boot environment variables as shown below:

```
U-Boot > setenv bootcmd 'nand read 0x12000000 0x4000000 0x1000000;booti 0x12000000'
U-Boot > setenv bootargs console=ttyMxc3,115200 androidboot.console=ttyMxc3 consoleblank=0
vmlalloc=320M init=/init video=mxcfb0:dev=hdmi,1920x1080M@60,bpp=32 video=mxcfb1:off
video=mxcfb2:off video=mxcfb3:off androidboot.hardware=freescale mtdparts=gpmi-nand:
64m(bootloader),16m(bootimg),16m(recovery),-(root) ubi.mtd=4 cma=384M
U-Boot > saveenv
```

With the settings above, the Android platform does not start the shell console. It enables the default Android selinux feature, which detect the system's information. To avoid this, "androidboot.selinux=disabled" need to be appended to the U-Boot's bootargs. Boot environment variables are as follows:

```
U-Boot > setenv bootcmd 'nand read 0x12000000 0x4000000 0x1000000;boota 0x12000000'
U-Boot > setenv bootargs console=ttyMxc3,115200 androidboot.console=ttyMxc3 consoleblank=0
vmlalloc=320M init=/init video=mxcfb0:dev=hdmi,1920x1080M@60,bpp=32 video=mxcfb1:off
video=mxcfb2:off video=mxcfb3:off androidboot.hardware=freescale mtdparts=gpmi-nand:
64m(bootloader),16m(bootimg),16m(recovery),-(root) ubi.mtd=4 cma=384M
androidboot.selinux=disabled
U-Boot > saveenv
```

### 4.4.3 Booting with dual displays: LVDS and HDMI displays

To boot from SD, set the U-Boot environment variables as shown below:

```
U-Boot > setenv bootcmd boota mmc1
U-Boot > setenv bootargs console=ttyMxc3,115200 androidboot.console=ttyMxc3 consoleblank=0
vmlalloc=320M init=/init video=mxcfb0:dev=ldb,bpp=32 video=mxcfb1:dev=hdmi,
1920x1080M@60,bpp=32 video=mxcfb2:off video=mxcfb3:off androidboot.hardware=freescale
cma=384M
U-Boot > saveenv
```

With the settings above, the Android platform does not start the shell console. It enables the default Android selinux and dm\_verity security features, which restrict users to change the system and detect the system's information. To avoid this, "androidboot.selinux=disabled" and "androidboot.dm\_verity=disabled" need to be appended to the U-Boot's bootargs. Boot environment variables are as follows:

```
U-Boot > setenv bootcmd boota mmc1
U-Boot > setenv bootargs console=ttyMxc3,115200 androidboot.console=ttyMxc3 consoleblank=0
vmlalloc=320M init=/init video=mxcfb0:dev=ldb,bpp=32 video=mxcfb1:dev=hdmi,
1920x1080M@60,bpp=32 video=mxcfb2:off video=mxcfb3:off androidboot.hardware=freescale
cma=384M androidboot.selinux=disabled androidboot.dm_verity=disabled
U-Boot > saveenv
```

To boot from NAND, set the U-Boot environment variables as shown below:

```
U-Boot > setenv bootcmd 'nand read 0x12000000 0x4000000 0x1000000;booti 0x12000000'
U-Boot > setenv bootargs console=ttyMxc3,115200 androidboot.console=ttyMxc3 consoleblank=0
vmlalloc=320M init=/init video=mxcfb0:dev=ldb,bpp=32 video=mxcfb1:dev=hdmi,
1920x1080M@60,bpp=32 video=mxcfb2:off video=mxcfb3:off androidboot.hardware=freescale
mtdparts=gpmi-nand:64m(bootloader),16m(bootimg),16m(recovery),-(root) ubi.mtd=4 cma=384M
U-Boot > saveenv
```

With settings above, the Android platform does not start the shell console. It enables the default Android selinux feature, which restrict users to change the system and detect the system's information. To avoid this, "androidboot.selinux=disabled" need to be appended to the U-Boot's bootargs. Boot environment variables are as follows:

```
U-Boot > setenv bootcmd 'nand read 0x12000000 0x4000000 0x1000000;boota 0x12000000'
U-Boot > setenv bootargs console=ttyMxc3,115200 androidboot.console=ttyMxc3 consoleblank=0
vmlalloc=320M init=/init video=mxcfb0:dev=ldb,bpp=32 video=mxcfb1:dev=hdmi,
1920x1080M@60,bpp=32 video=mxcfb2:off video=mxcfb3:off androidboot.hardware=freescale
mtdparts=gpmi-nand:64m(bootloader),16m(bootimg),16m(recovery),-(root) ubi.mtd=4 cma=384M
androidboot.selinux=disabled
U-Boot > saveenv
```

## 4.5 Board reboot

After you have completed download and setup, reboot the board and wait for the Android platform to boot up.



Figure 11. Android Lollipop image

## 5 Working with the i.MX 6 SoloLite EVK Board

### 5.1 Board hardware

The figure below shows the different components of the SoloLite EVK board.

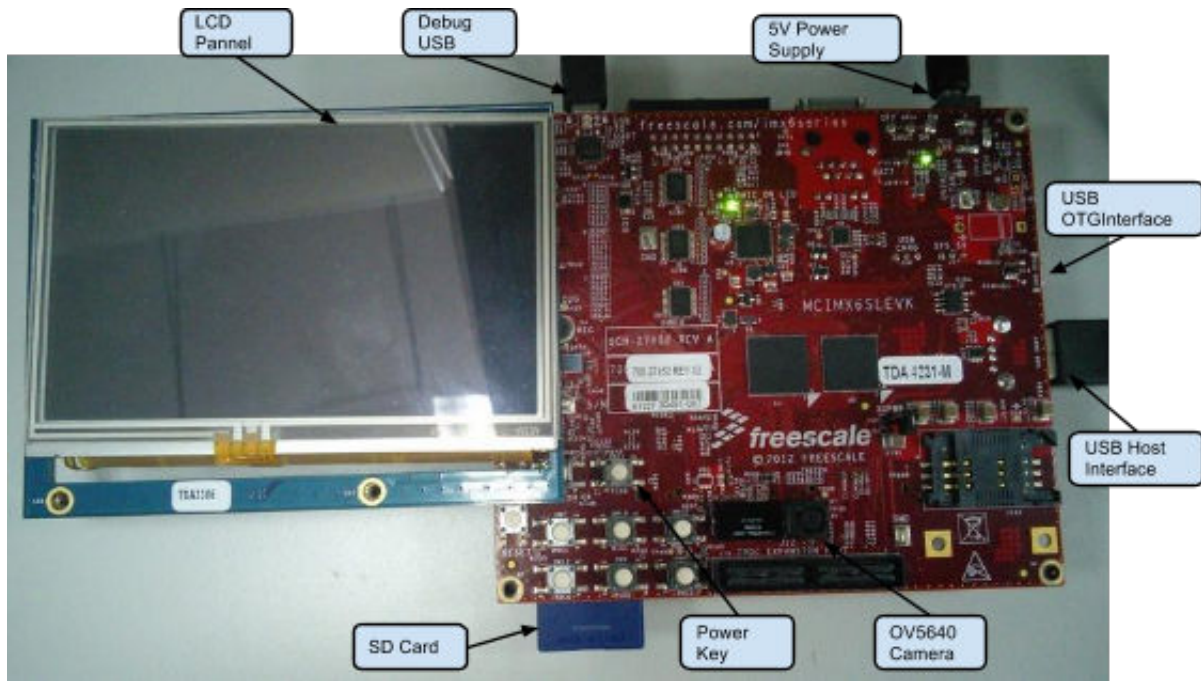


Figure 12. i.MX 6 SoloLite EVK board

## 5.2 Board images

The table below describes the location in the board partitions of the software images in android\_L5.1.1\_2.1.0-ga\_core\_image\_6slevk.tar.gz on board partitions.

Table 4. Board images

Image name	Path in release package	Download target
u-boot-imx6sl.imx	\	SD first 8 MB block
boot-imx6sl.img	\SD	SD 1st partition
recovery-imx6sl.img	\SD	SD 2nd partition
system.img	\SD	SD 5th partition

## 5.3 Downloading board images

The board images can be downloaded to the target board by using the MFGTool. The release package includes MFGTool for i.MX 6Dual/6Quad, i.MX 6Solo/6DualLite, i.MX 6SoloX, i.MX 6SoloLite, i.MX 6QuadPlus, and i.MX 7Dual in android\_L5.1.1\_2.1.0-ga\_tools.tar.gz. The MFGTool is mfgtools.tar.gz.

### NOTE

The MFGTool only works in Windows OS environment.

Perform the following steps to download the board images:

1. Unzip the mfgtools.tar.gz file to a selected location. The directory is named MFGTool-Dir in this example.
2. If the directory does not exist, create the "android/evk" directory under the MFGTool-Dir/Profiles/Linux/OS Firmware/ files path.



3. Copy following files from release\_package/android\_L5.1.1\_2.1.0-ga\_core\_image\_6slevk.tar.gz to your MFGTool-Dir/Profiles/Linux/OS Firmware/files/android/evk directory.
  - u-boot-imx6sl.imx
  - SD/boot-imx6sl.img
  - SD/system.img
  - SD/recovery-imx6sl.img

**NOTE**

Do not replace other files in files directory and OS firmware directory.

4. Change the i.MX 6SoloLite-EVK board's S1 (boot mode) to 10 (from 1 bit to 2 bit) to enter download mode.
5. Power on the board. Use USB cable on the i.MX 6SoloLite-EVK board OTG port, and connect a computer running Windows OS with the i.MX 6SoloLite-EVK board.

**NOTE**

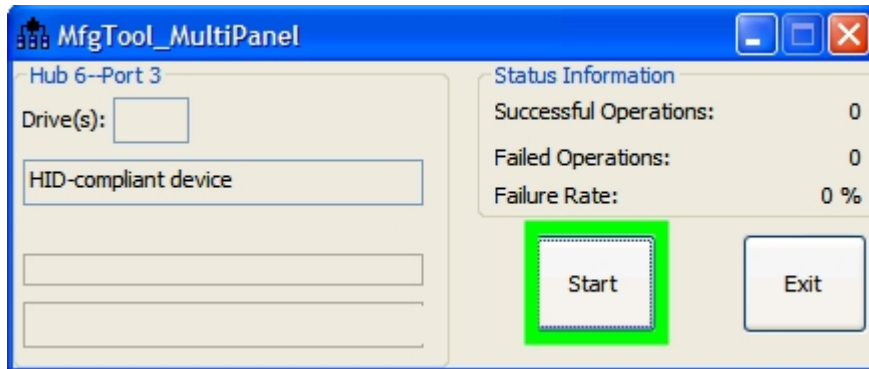
There are two USB micro ports in i.MX 6SoloLite-EVK board: USB to UART, USB OTG. The USB to UART can be referenced as debug UART, and the USB OTG can be referenced as USB in the hardware image above. The debug UART can be used to watch the log of the hardware boot processing.

6. Double-click the \*.vbs file according to the target device as shown in the following table.

**Table 5. MFGTool VBS file**

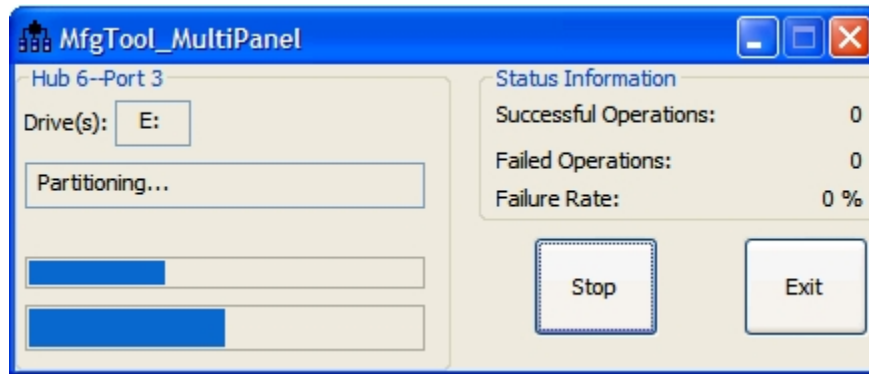
Target device and boot storage	VBS file
i.MX 6SoloLite EVK SD	mfgtool2-android-mx6sl-evk-sd.vbs

7. Click Start to start downloading images.



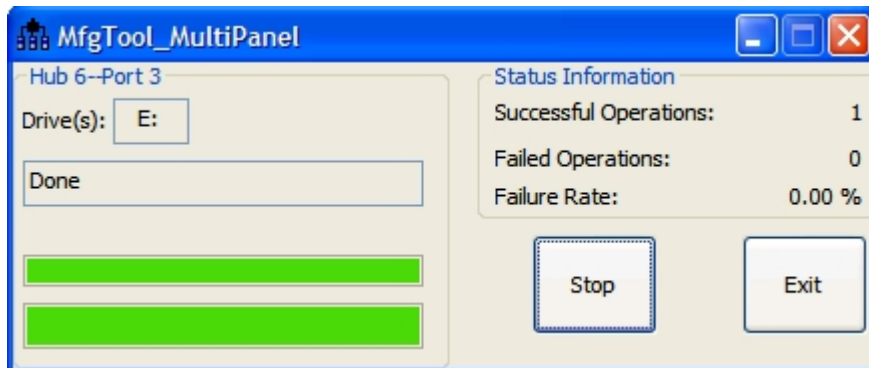
**Figure 13. Starting download**

The figure below shows downloading in progress, and the status bar shows the download status. The download may take one to two minutes depending on the host machine.



**Figure 14. Download status**

The figure below shows the tool when the download is complete.



**Figure 15. Download complete**

8. Click Stop and disconnect the USB cable.
9. Change S1 (boot mode) to 01 (from 1 bit to 2 bit). Change "Boot Switch(SW3,4,5)" to 01000000 (from 1 bit to 8 bit) 00101100 (from 1 bit to 8 bit) 00000000 (from 1 bit to 8 bit) to switch the board back to SD1 boot mode.

## 5.4 Booting with single display: LCD display

When the Android system image is programmed and the Boot Switch(es) is configured, the system is ready to be powered on.

In the U-Boot prompt, set the U-Boot environment variables as shown below:

```
U-Boot > setenv bootcmd boota mmc1
U-Boot > setenv bootargs console=ttyMxc0,115200 init=/init androidboot.console=ttyMxc0
consoleblank=0 androidboot.hardware=freescale
U-Boot > saveenv
```

With the settings above, the Android platform does not start the shell console. It enables the default Android selinux and dm\_verity security features, which restrict users to change the system and detect the system's information. To avoid this, "androidboot.selinux=disabled" and "androidboot.dm\_verity=disabled" need to be appended to the U-Boot's bootargs. Boot environment variables are as follows:

```
U-Boot > setenv bootcmd boota mmc1
U-Boot > setenv bootargs console=ttyMxc0,115200 init=/init androidboot.console=ttyMxc0
consoleblank=0 androidboot.hardware=freescale androidboot.selinux=disabled
androidboot.dm_verity=disabled
U-Boot > saveenv
```

## 5.5 Board reboot

After you have completed download and setup, reboot the board and wait for the Android platform to boot up.



Figure 16. Android Lollipop image

## 6 Working with the i.MX 6SoloX SABRE-SD Board

### 6.1 Board hardware

The figure below shows the different components of the i.MX 6SoloX SABRE-SD board.

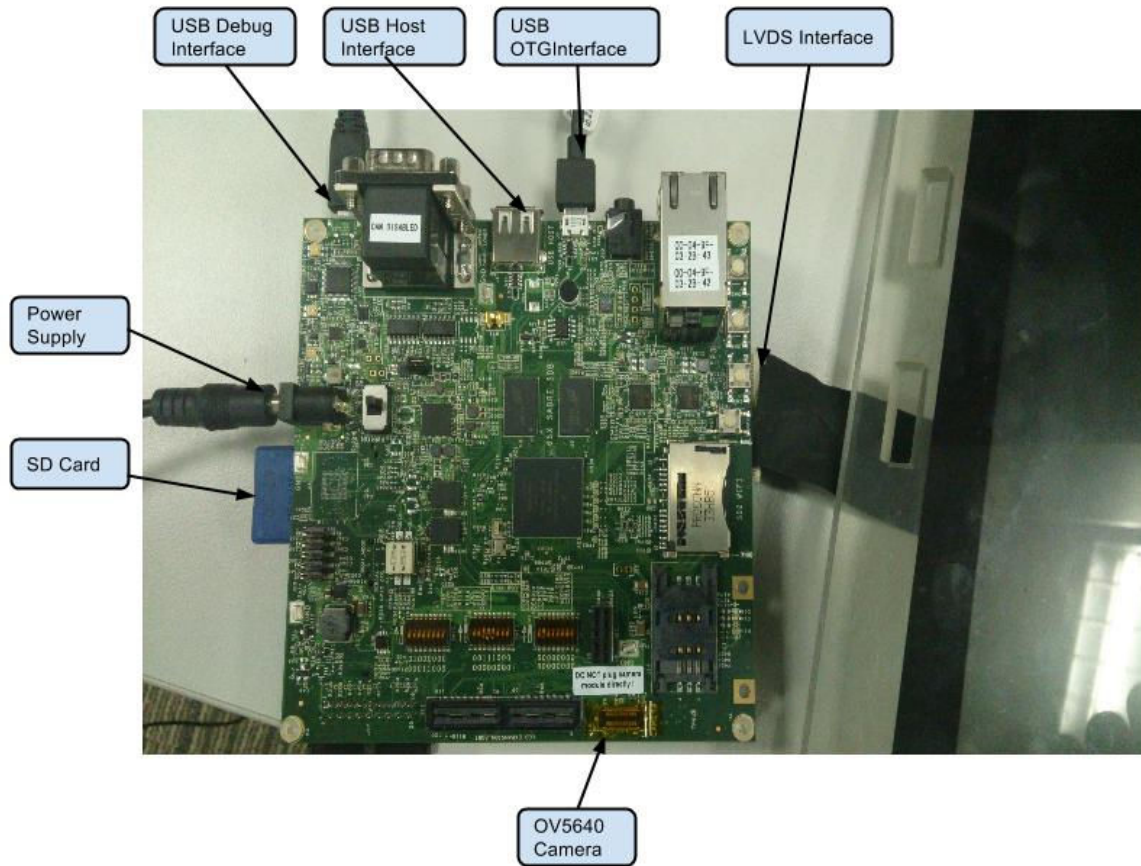


Figure 17. i.MX 6SoloX SABRE-SD board

## 6.2 Board images

The table below describes the location in the board partitions of the software images in android\_L5.1.1\_2.1.0-ga\_core\_image\_6slevk.tar.gz on board partitions.

Table 6. Board images

Image name	Path in release package	Download target
u-boot-imx6sx.imx	\	SD first 8 MB block
boot-imx6sx.img	\SD	SD 1st partition
recovery-imx6sx.img	\SD	SD 2nd partition
system.img	\SD	SD 5th partition

## 6.3 Downloading board images

The board images can be downloaded to the target board by using the MFGTool. The release package includes MFGTool for i.MX 6Dual/6Quad, i.MX 6Solo/6DualLite, i.MX 6SoloX, i.MX 6SoloLite, i.MX 6QuadPlus, and i.MX 7Dual in android\_L5.1.1\_2.1.0-ga\_tools.tar.gz. The MFGTool is mfgtools.tar.gz.

### NOTE

The MFGTool only works in Windows OS environment.

Perform the following steps to download the board images:

1. Unzip the mfgtools.tar.gz file to a selected location. The directory is named MFGTool-Dir in this example.
2. If the directory does not exist, create the "android/sabresd" directory under the MFGTool-Dir/Profiles/Linux/OS Firmware/files path.
3. Copy following files from release\_package/android\_L5.1.1\_2.1.0-ga\_core\_image\_6xsabresd.tar.gz to your MFGTool-Dir/Profiles/Linux/OS Firmware/files/android/sabresd path.
  - u-boot-imx6sx.imx
  - SD/boot-imx6sx.img
  - SD/system.img
  - SD/recovery-imx6sx.img

### NOTE

Do not replace other files in files directory and OS firmware directory.

4. Change the the i.MX SoloX SABRE-SD board's S1 (boot mode) to 10 (from 1-2 bit) to enter download mode.
5. Power on the board. Use the USB cable on the OTG port of the i.MX SoloX SABRE-SD board, and connect a computer running Windows OS with the i.MX SoloX SABRE-SD board.

### NOTE

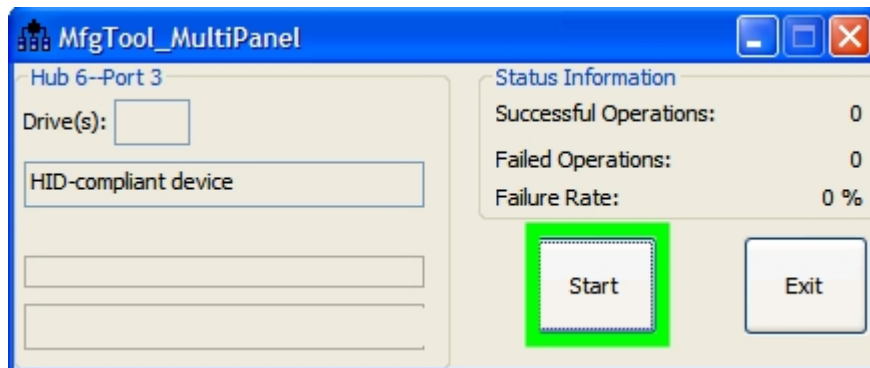
There are two USB micro ports on the i.MX SoloX SABRE-SD board: USB to UART, USB OTG. The USB to UART can be referenced as debug UART, and the USB OTG can be referenced as USB in the hardware image above. The debug UART can be used to watch the log of the hardware boot processing.

6. Double-click the \*.vbs file according to the target device as shown in the following table.

**Table 7. MFGTool VBS file**

Target device and boot storage	VBS file
i.MX SoloX SABRE-SD SD	mfgtool2-android-mx6sx-sabresd-sdcard.vbs

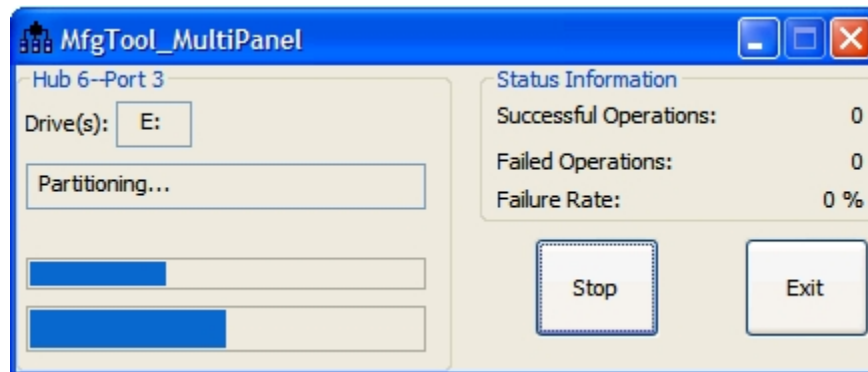
7. Click Start to start downloading images.



**Figure 18. Starting download**

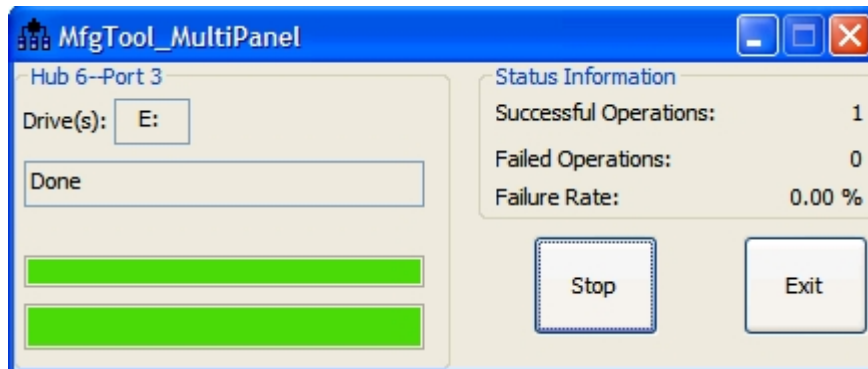
## Working with the i.MX 6SoloX SABRE-SD Board

The figure below shows downloading in progress, and the status bar shows the download status. The download may take one to two minutes depending on the host machine.



**Figure 19. Download status**

The figure below shows the tool when the download is complete.



**Figure 20. Download complete**

8. Click Stop and disconnect the USB cable.
9. Change S1 (boot mode) to 01 (from 1 bit to 2 bit). Change "Boot Switch (SW10,11,12)" to 00000000 (from 1 bit to 8 bit), 00111000 (from 1 bit to 8 bit), 01000000 (from 1 bit to 8 bit) to switch the board back to SD4 boot mode.

## 6.4 Booting with single display: LVDS display

When the Android system image is programmed and the Boot Switch(es) is configured, the system is ready to be powered on.

In the U-Boot prompt, set the U-Boot environment variables as shown below:

```
U-Boot > setenv bootcmd boota mmc2
U-Boot > setenv bootargs console=ttyMxc0,115200 init=/init androidboot.console=ttyMxc0
consoleblank=0 androidboot.hardware=freescale vmalloc=256M cma=384M
U-Boot > saveenv
```

With the settings above, the Android platform does not start the shell console. It enables the default Android selinux and dm\_verity security features, which restrict users to change the system and detect the system's information. To avoid this, "androidboot.selinux=disabled" and "androidboot.dm\_verity=disabled" need to be appended to the U-Boot's bootargs. Boot environment variables are as follows:

```
U-Boot > setenv bootcmd boota mmc2
U-Boot > setenv bootargs console=ttyMXC0,115200 init=/init androidboot.console=ttyMXC0
consoleblank=0 androidboot.hardware=freescale vmalloc=256M cma=384M
androidboot.selinux=disabled androidboot.dm_verity=disabled
U-Boot > saveenv
```

## 6.5 Board reboot

After you have completed download and setup, reboot the board and wait for the Android platform to boot up.



Figure 21. Android Lollipop image

## 7 Working with the i.MX 6SoloX SABRE-AI Board

### 7.1 Board hardware

The figure below shows the different components of the i.MX 6SoloX SABRE-AI board.

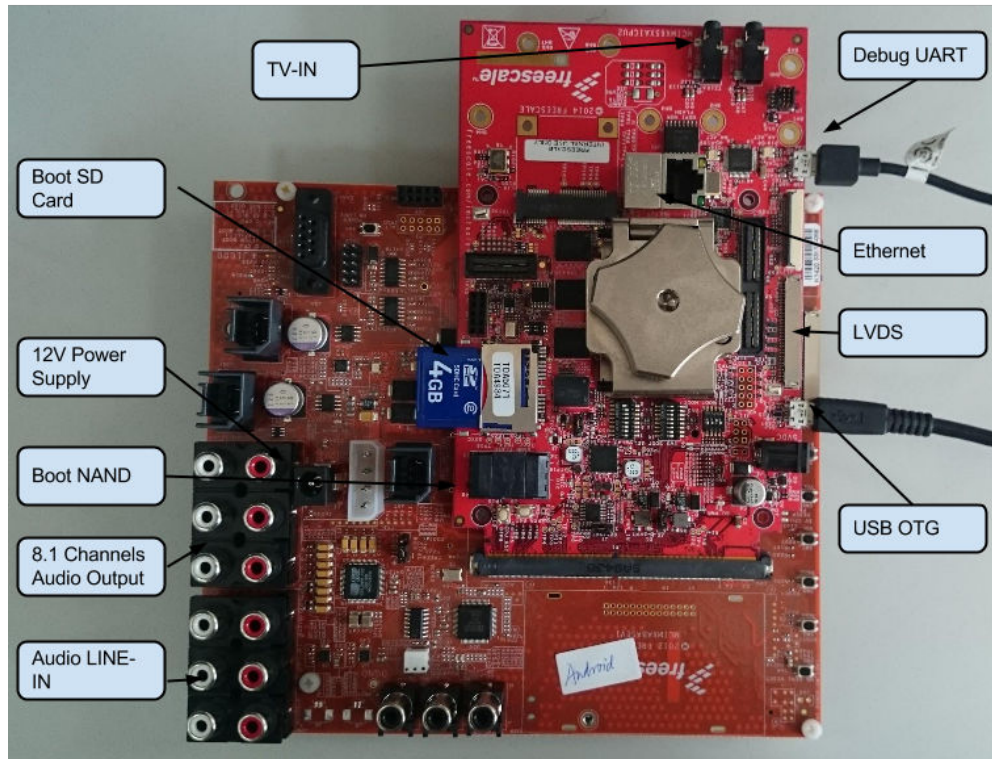


Figure 22. i.MX 6SoloX SABRE-AI board

## 7.2 Board images

The table below describes the location in the board partitions of the SD card and NAND images in android\_L5.1.1\_2.1.0-ga\_full\_image\_6sxqsabreauto.tar.gz.

Table 8. Board images

Image name	Path in release package	Download target
u-boot-imx6sx.imx	\	SD first 8 MB block
boot-imx6sx.img	\SD	SD 1st partition
recovery-imx6sx.img	\SD	SD 2nd partition
system.img	\SD	SD 5th partition
u-boot-imx6sx-nand.i mx	\	NAND 1st 64 MB MTD partition
boot-imx6sx.img	\NAND	NAND 2nd 16 MB MTD partition
recovery-imx6sx.img	\NAND	NAND 3rd 16 MB MTD partition
android_root.img	\NAND	UBIFS volume for 4th MTD partition



## 7.3 Downloading board images

The board images can be downloaded to the target board by using the MFGTool. The release package includes MFGTool for i.MX 6Dual/6Quad, i.MX 6Solo/6DualLite, i.MX 6SoloX, i.MX 6SoloLite, i.MX 6QuadPlus, and i.MX 7Dual in android\_L5.1.1\_2.1.0-ga\_tools.tar.gz. The MFGTool is mfgtools.tar.gz.

### NOTE

The MFGTool only works in the Windows OS environment.

Perform the following steps to download the board images:

1. Unzip the mfgtools.tar.gz file to a selected location. The directory is named MFGTool-Dir in this example.
2. If the directory does not exist, create the "android/sabreauto" directory under the MFGTool-Dir/Profiles/Linux/OS Firmware/files path.
3. Copy following files from either release\_package/android\_L5.1.1\_2.1.0-ga\_core\_image\_6xsabreseauto.tar.gz or release\_package/android\_L5.1.1\_2.1.0-ga\_full\_image\_6xsabeauto.tar.gz to the MFGTool-Dir/Profiles/Linux/OS Firmware/files/android/sabreauto path.
  - u-boot-imx6sx.imx
  - SD/boot-imx6sx.img
  - SD/system.img
  - SD/recovery-imx6sx.img

### NOTE

- Do not replace other files in files directory and OS firmware directory.
- When the NAND boot is used, the files are in the "nand" folder, and you can use android\_root.img instead system.img. The bootloader should be u-boot-imx6sx-nand.imx. Change S3,S4 to 00000000,00000001.
- Change the SABRE-AI S1 (boot mode) to 0101 (from 1 bit to 4 bit) to enter download mode. Change SW3,SW4 (boot configuration) to 00001100, 01000010 to boot from SD.

4. Power on the board. Use the USB cable on the OTG port of the i.MX SoloX SABRE-AI board, and connect a computer running Windows OS with the i.MX SoloX SABRE-AI board.

### NOTE

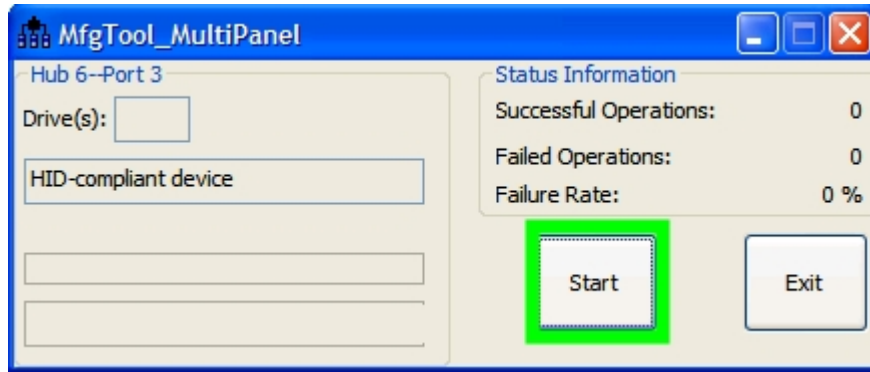
The USB micro port on the SABRE-AI board is J10.

5. Double-click the \*.vbs file according to the target device as shown in the following table.

**Table 9. MFGTool VBS file**

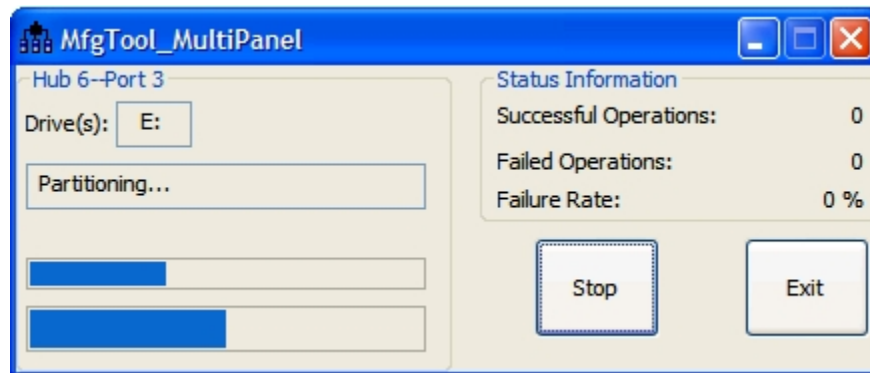
Target device and boot storage	VBS file
i.MX SoloX SABRE-AI SD	mfgtool2-android-mx6sx-sabreauto-sdcard.vbs
i.MX 6SoloX SABRE-AI NAND	mfgtool2-android-mx6sx-sabreauto-nand.vbs

6. Click Start to start downloading images.



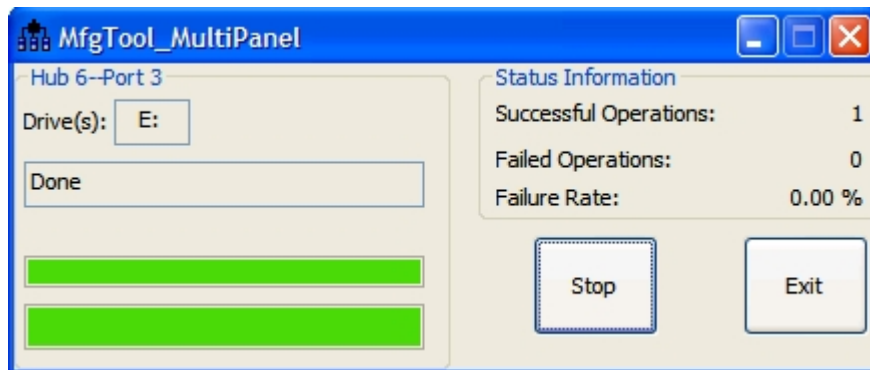
**Figure 23. Starting download**

The figure below shows downloading in progress, and the status bar shows the download status. The download may take one to two minutes depending on the host machine.



**Figure 24. Download status**

The figure below shows the tool when the download is complete.



**Figure 25. Download complete**

7. Click Stop and disconnect the USB cable.
8. Change “Boot Switch(S1)” to 0010 (1 bit to 4 bit) to switch the board back to SD boot mode. Change the board boot switch to (S1, SW3, SW4) 0010, 00000000,00000001 (from 1 bit) to boot from NAND.

## 7.4 Booting with single display: LVDS display

When the Android system image is programmed and the Boot Switch(es) is configured, the system is ready to be powered on.

There are two LVDS ports on the SABRE-AI board, LVDS0, and LVDS1. LVDS0 is taken as the primary display in this release. The LVDS0 port is on the CPU board. The LVDS1 is on the base board.

To boot from SD, set the U-Boot environment variables as follows

```
U-Boot > setenv bootcmd boota mmc0
U-Boot > setenv bootargs console=ttymx0,115200 init=/init androidboot.console=ttymx0
consoleblank=0 androidboot.hardware=freescale vmalloc=256M cma=384M
U-Boot > saveenv
```

With the settings above, the Android platform does not start the shell console. It enables the default Android selinux and dm\_verity security features, which restrict users to change the system and detect the system's information. To avoid this, "androidboot.selinux=disabled" and "androidboot.dm\_verity=disabled" need to be appended to the U-Boot's bootargs. Boot environment variables are as follows:

```
U-Boot > setenv bootcmd boota mmc0
U-Boot > setenv bootargs console=ttymx0,115200 init=/init androidboot.console=ttymx0
consoleblank=0 androidboot.hardware=freescale vmalloc=256M cma=384M
androidboot.selinux=disabled androidboot.dm_verity=disabled
U-Boot > saveenv
```

To boot from NAND, set the U-Boot environment variables as follows:

```
U-Boot > setenv bootcmd 'nand read 0x80800000 0x4000000 0x1000000;booti0x80800000'
U-Boot > setenv bootargs console=ttymx0,115200 init=/init video=mxcfb0:dev=ldb,bpp=32
video=mxcfb1:off video=mxcfb2:off video=mxcfb3:off vmalloc=256M cma=384M
androidboot.console=ttymx0 consoleblank=0 androidboot.hardware=freescale mtdparts=gpmi-nand:
64m(bootloader),16m(bootimg),16m(recovery),-(root) ubi.mtd=5
U-Boot > saveenv
```

With the settings above, the Android platform does not start the shell console. It enables the default Android selinux feature, which restrict users to change the system and detect the system's information. To avoid this, "androidboot.selinux=disabled" need to be appended to the U-Boot's bootargs. Boot environment variables are as follows:

```
U-Boot > setenv bootcmd 'nand read 0x80800000 0x4000000 0x1000000;boota 0x80800000'
U-Boot > setenv bootargs console=ttymx0,115200 init=/init video=mxcfb0:dev=ldb,bpp=32
video=mxcfb1:off video=mxcfb2:off video=mxcfb3:off vmalloc=256M cma=384M
androidboot.console=ttymx0 consoleblank=0 androidboot.hardware=freescale mtdparts=gpmi-nand:
64m(bootloader),16m(bootimg),16m(recovery),-(root) ubi.mtd=5 androidboot.selinux=disabled
U-Boot > saveenv
```

## 7.5 Board reboot

After you have completed download and setup, reboot the board and wait for the Android platform to boot up.



Figure 26. Android Lollipop image

## 8 Working with the i.MX 7Dual SABRE-SD Board

### 8.1 Board hardware

The figure below shows the different components of the i.MX 7Dual SABRE-SD board.

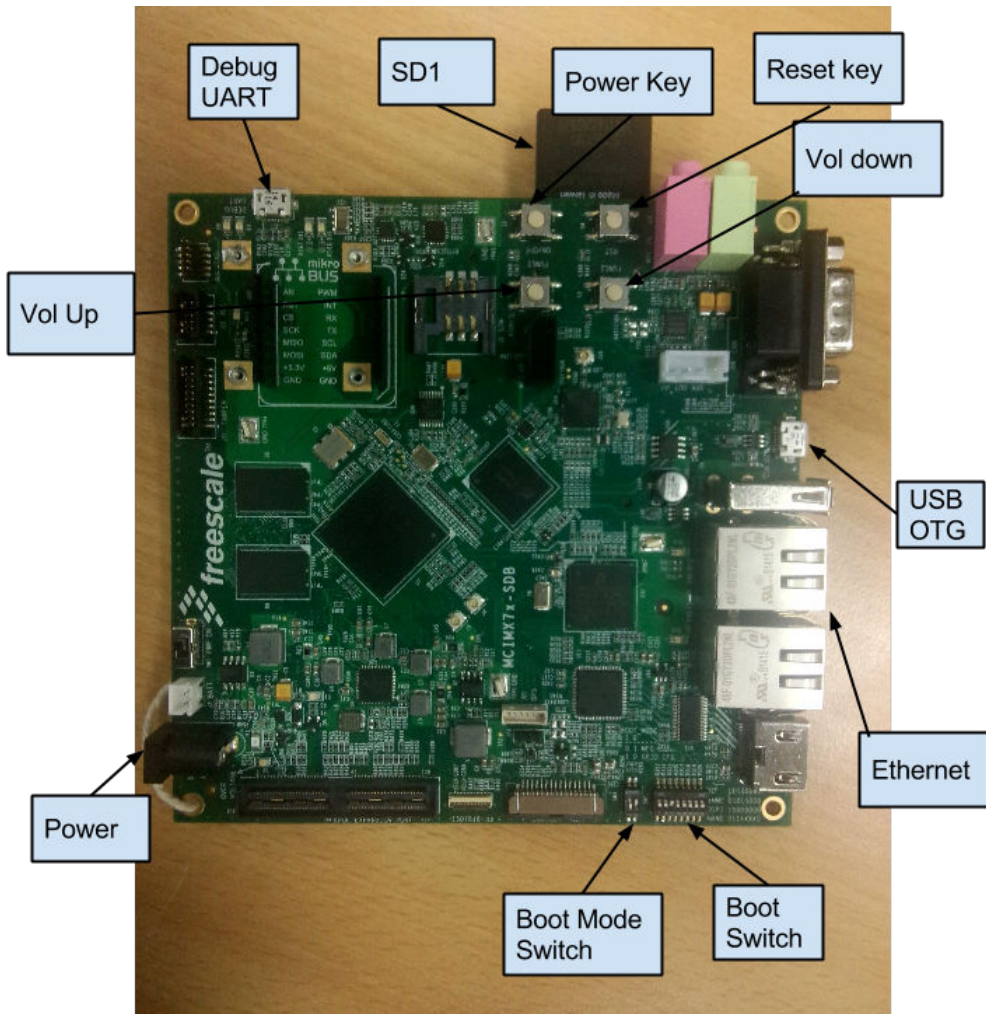


Figure 27. i.MX 7Dual SABRE-SD board

## 8.2 Board images

The table below describes the location in the board partitions of the software images in `android_L5.1.1_2.1.0-ga_core_image_7dsabresd.tar.gz` and `android_L5.1.1_2.1.0-ga_full_image_7dsabresd.tar.gz`.

Table 10. Board images

Image name	Path in release package	Download target
u-boot-imx7d.imx	\	SD first 8 MB block
boot-imx7d.img	\SD	SD 1st partition
recovery-imx7d.img	\SD	SD 2nd partition
system.img	\SD	SD 5th partition

## 8.3 Downloading board images

The board images can be downloaded to the target board by using the MFGTool. The release package includes MFGTool for i.MX 6Dual/6Quad, i.MX 6Solo/6DualLite, i.MX 6SoloX, i.MX 6SoloLite, i.MX 6QuadPlus, and i.MX 7Dual in android\_L5.1.1\_2.1.0-ga\_tools.tar.gz. The MFGTool is mfgtools.tar.gz.

**NOTE**

The MFGTool only works in Windows OS environment.

Perform the following steps to download the board images:

1. Unzip the mfgtools.tar.gz file to a selected location. The directory is named MFGTool-Dir in this example.
2. If the directory does not exist, create the "android/sabresd" directory under the MFGTool-Dir/Profiles/Linux/OS Firmware/files path.
3. Copy following files from release\_package/android\_L5.1.1\_2.1.0-ga\_core\_image\_7dsabresd.tar.gz to your MFGTool-Dir/Profiles/Linux/OS Firmware/files/android/sabresd directory.
  - u-boot-imx7d.imx
  - SD/boot-imx7d.img
  - SD/system.img
  - SD/recovery-imx7d.img

**NOTE**

Do not replace other files in files directory and OS firmware directory.

4. Change the board's SW3 (boot mode) to 01 (from 1 bit to 2 bit) to enter download mode.
5. Power on the board. Use USB cable on the board OTG port, and connect a computer running Windows OS with the board.

**NOTE**

There are two USB micro ports in i.MX 7Dual SABRE-SD board: USB to UART, USB OTG. The USB to UART can be referenced as debug UART, and the USB OTG can be referenced as USB in the hardware image above. The debug UART can be used to watch the log of the hardware boot processing.

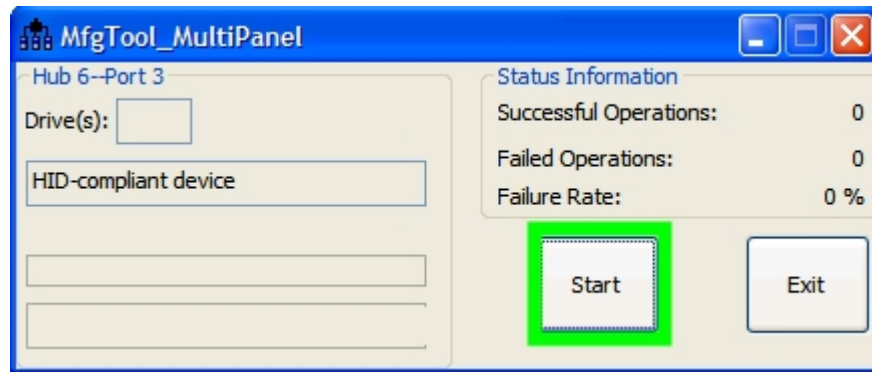
The SD card should be plugged in after the board is powered on.

6. Double-click the \*.vbs file according to the target device as shown in the following table.

**Table 11. MFGTool VBS file**

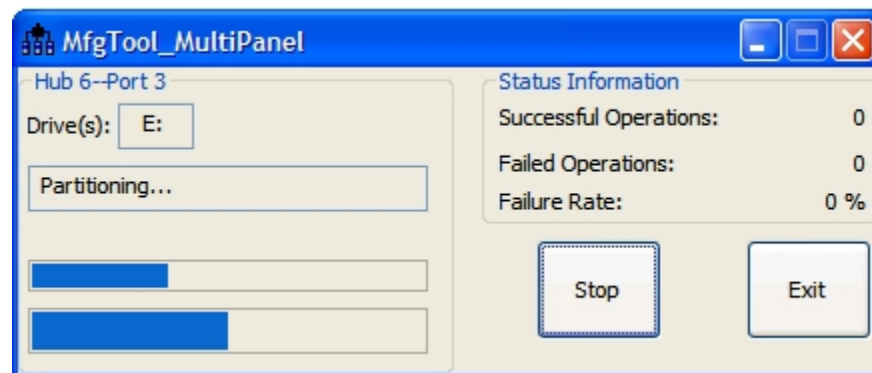
Target device and boot storage	VBS file
i.MX 7Dual SABRE-SD	mfgtool2-android-mx7d-sabresd-sd.vbs

7. Click Start to start downloading images.



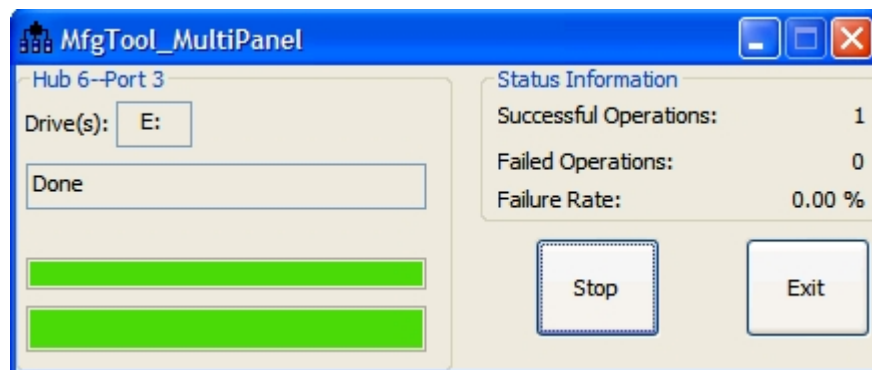
**Figure 28. Starting download**

The figure below shows downloading in progress, and the status bar shows the download status. The download may take one to two minutes depending on the host machine.



**Figure 29. Download status**

The figure below shows the tool when the download is complete.



**Figure 30. Download complete**

8. Click Stop and disconnect the USB cable.
9. Change SW3 (boot mode) to 10 (from 1 bit to 2 bit). Change SW2 to switch the board back to SD4 boot mode 00100000 (SD), 01010000 (eMMC), 011XXXX0 (NAND).

## 8.4 Booting with single display: LVDS display or HDMI display

In the U-Boot prompt, set the U-Boot environment variables as shown below:

## Revision History

```
U-Boot > setenv bootcmd boota mmc0
U-Boot > setenv bootargs console=ttyMXC0,115200 init=/init androidboot.console=ttyMXC0
consoleblank=0 androidboot.hardware=freescale
U-Boot > saveenv
```

With the settings above, the Android platform does not start the shell console. It enables the default Android selinux and dm\_verity security features, which restrict users to change the system and detect the system's information. To avoid this, "androidboot.selinux=disabled" and "androidboot.dm\_verity=disabled" need to be appended to the U-Boot's bootargs. Boot environment variables are as follows:

```
U-Boot > setenv bootcmd boota mmc0
U-Boot > setenv bootargs console=ttyMXC0,115200 init=/init androidboot.console=ttyMXC0
consoleblank=0 androidboot.hardware=freescale androidboot.selinux=disabled
androidboot.dm_verity=disabled
U-Boot > saveenv
```

## 8.5 Board reboot

After you have completed download and setup, reboot the board and wait for the Android platform to boot up.



Figure 31. Android Lollipop image

## 9 Revision History

Table 12. Revision history

Revision number	Date	Substantive changes
L5.1.1_2.1.0-ga	01/2016	Initial release.



---

**How to Reach Us:**

**Home Page:**  
[freescale.com](http://freescale.com)

**Web Support:**  
[freescale.com/support](http://freescale.com/support)

Information in this document is provided solely to enable system and software implementers to use Freescale products. There are no express or implied copyright licenses granted hereunder to design or fabricate any integrated circuits based on the information in this document.

Freescale reserves the right to make changes without further notice to any products herein. Freescale makes no warranty, representation, or guarantee regarding the suitability of its products for any particular purpose, nor does Freescale assume any liability arising out of the application or use of any product or circuit, and specifically disclaims any and all liability, including without limitation consequential or incidental damages. "Typical" parameters that may be provided in Freescale data sheets and/or specifications can and do vary in different applications, and actual performance may vary over time. All operating parameters, including "typicals," must be validated for each customer application by customer's technical experts. Freescale does not convey any license under its patent rights nor the rights of others. Freescale sells products pursuant to standard terms and conditions of sale, which can be found at the following address: [freescale.com/SalesTermsandConditions](http://freescale.com/SalesTermsandConditions).

Freescale and the Freescale logo are trademarks of Freescale Semiconductor, Inc., Reg. U.S. Pat. & Tm. Off. All other product or service names are the property of their respective owners. ARM, ARM Powered logo, and Cortex are registered trademarks of ARM Limited (or its subsidiaries) in the EU and/or elsewhere. All rights reserved.

© 2016 Freescale Semiconductor, Inc.

