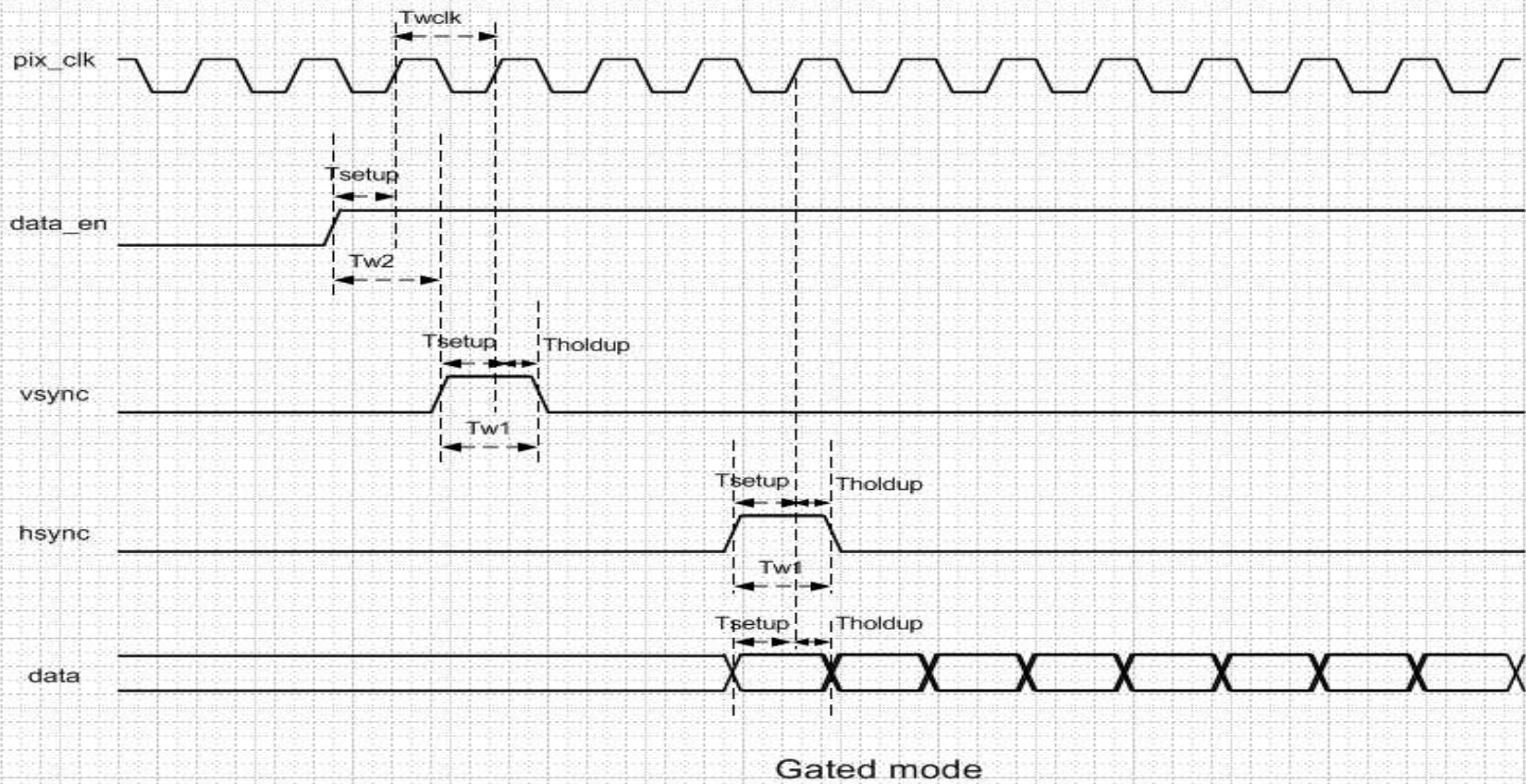
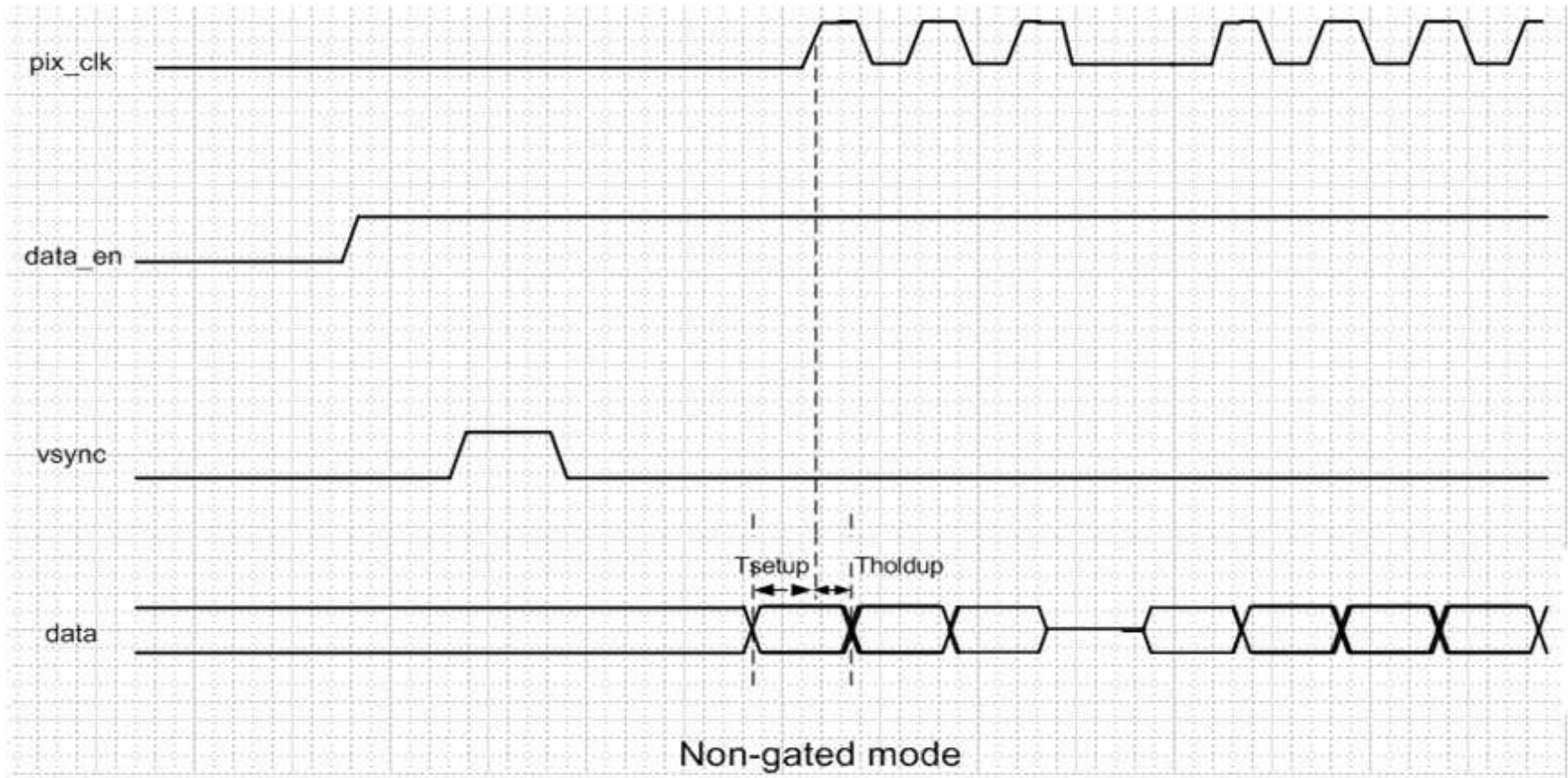


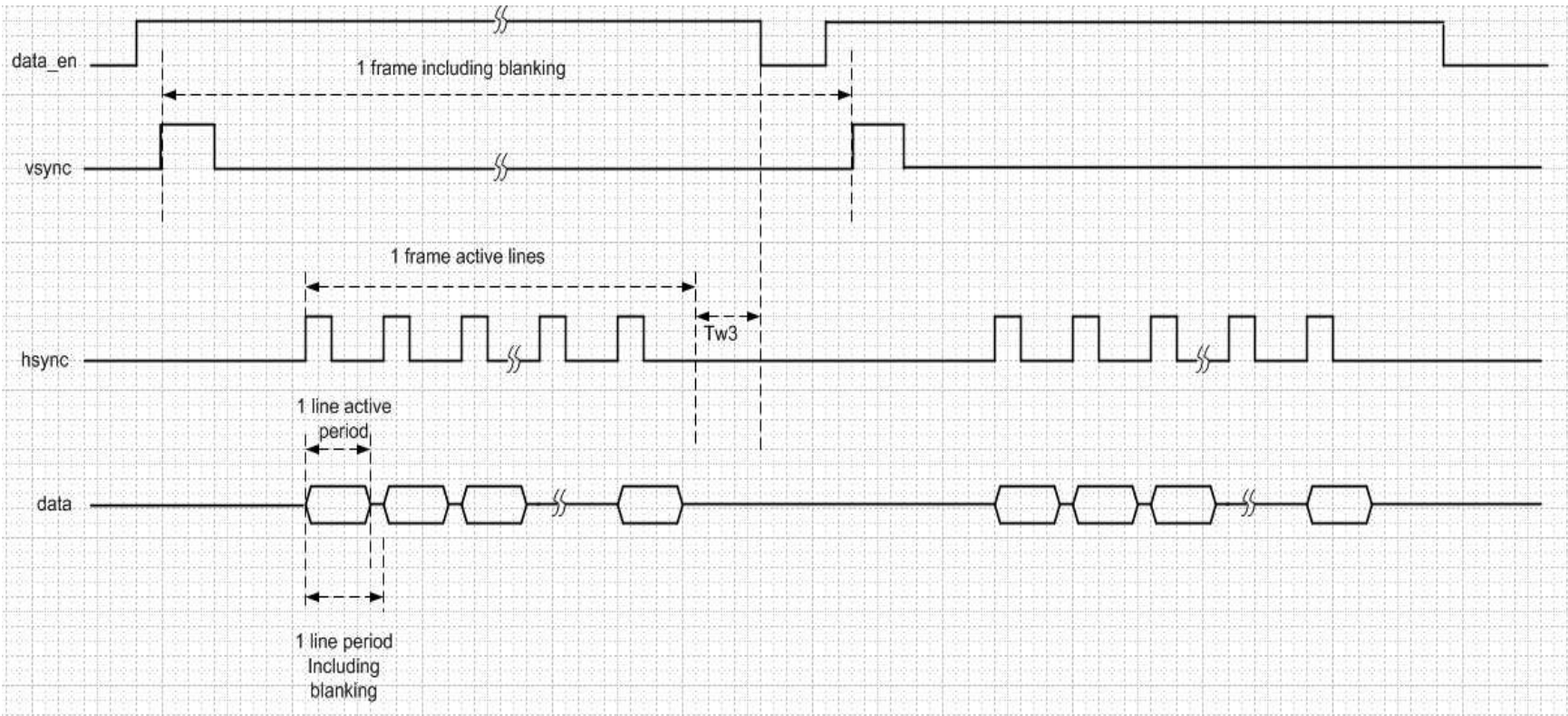
Notes:

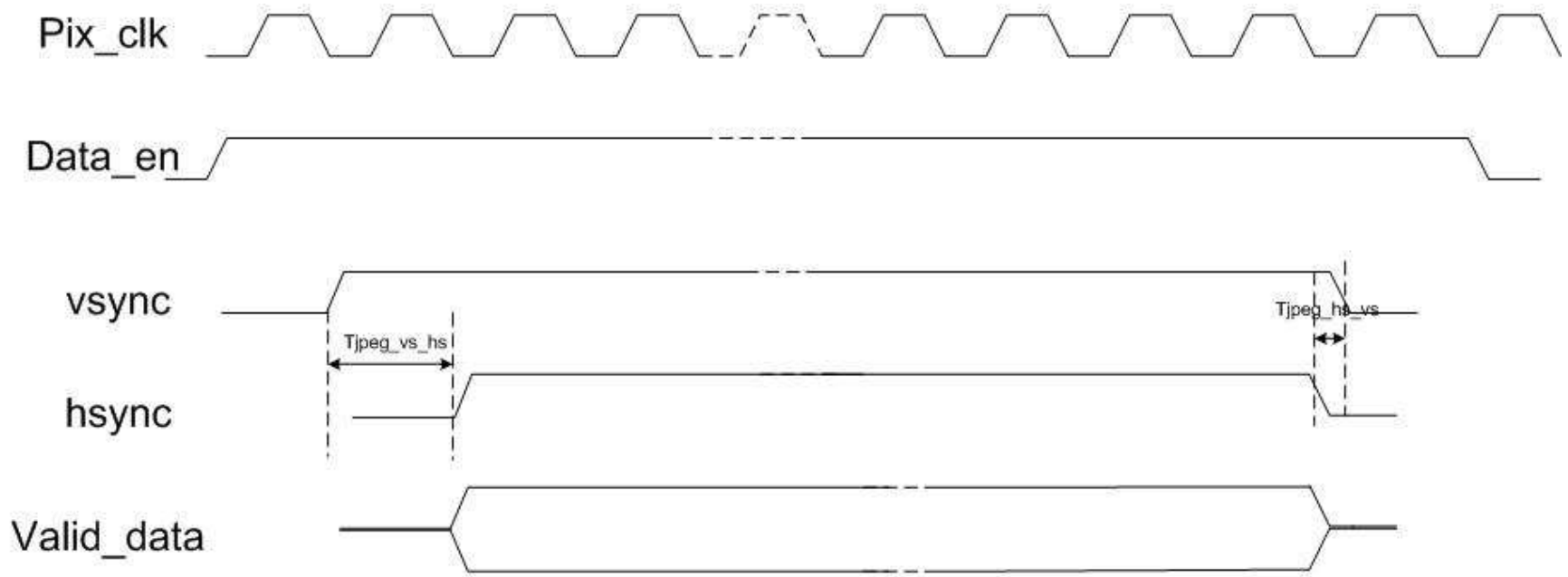
- 1, first data of each line should be aligned with hsync
- 2, data_en must be asserted ahead vsync and remain active during one frame.





0
1
2
3
4





JPEG mode

When in JPEG mode, hsync is holded for whole frame valid data

Timing requirement		
	Min	Max
Tsetup	4.5ns	
Tholdup	1ns	
Tw1	Twclk	
Tw2	Twclk	
Tw3	Twclk	

Tjpeg_vs_hs	0	
Tjpeg_hs_vs	0	