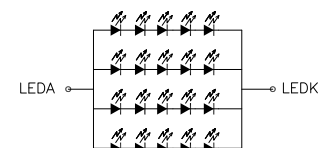
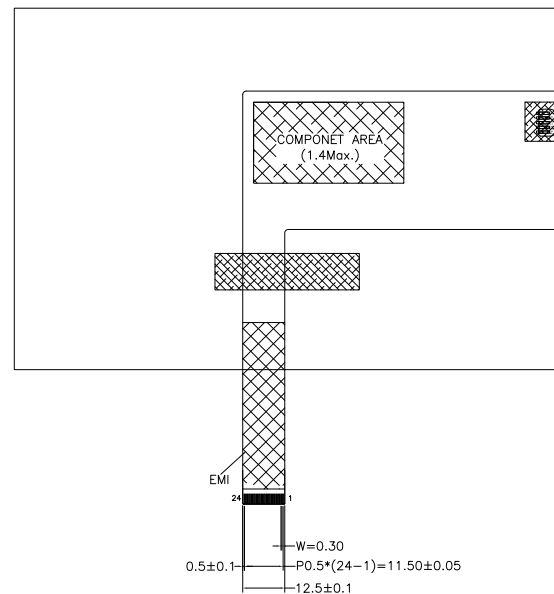
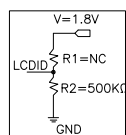
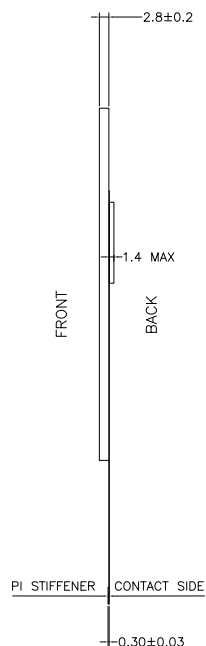


NOTES:

1. DISPLAY TYPE: TFT, TRANSMISSIVE, NORMALLY BLACK.
2. VIEWING DIRECTION: FULL VIEWING ANGLE.
3. OPERATING VOLTAGE: VCC=3.3V.
4. DRIVER IC: JD9366.
5. OPERATING TEMP.: -20°C ~ 70°C.
6. STORAGE TEMP.: -30°C ~ 80°C.
7. BACKLIGHT: 20-CHIPS WHITE LED, IF=80mA, Vf=14.5V~16.5V.
8. SURFACE LUMINANCE: 300CD/M²(TYP.).
9. TOP POLARIZER SURFACE TREATMENT: ANTI-GLRE.
10. GENERAL TOLERANCE: ±0.3MM.
11. ROHS COMPLIANT.



BACKLIGHT CIRCUIT DIAGRAM

PIN ASSIGNMENT	
PIN	SYMBOL
1	GND
2	VLED_N
3	LRSTB
4	LPTE
5	VCC
6	IOVCC
7	LCD_ID
8	GND
9	MIPI_TDN2
10	MIPI_TDP2
11	GND
12	GND
13	GND
14	VLED_P
15	GND
16	MIPI_TCP
17	MIPI_TCN
18	GND
19	MIPI_TDNO
20	MIPI_TDP0
21	GND
22	MIPI_TDN1
23	MIPI_TDP1
24	GND



MULTI-INNO TECHNOLOGY CO.,LTD.

DRAWN BY:	RITA	20190305	SCALE : 1/1	MODULE P/N:
CHECKED BY:			UNIT: mm	MI0700BLT-1
APPROVED BY:				DESCRIPTION:
VERSION NO:	01			TFT MODULE

01	FIRST ISSUE	RITA	2019.03.05
VER.	REVISED DESCRIPTION	REVISER	DATE