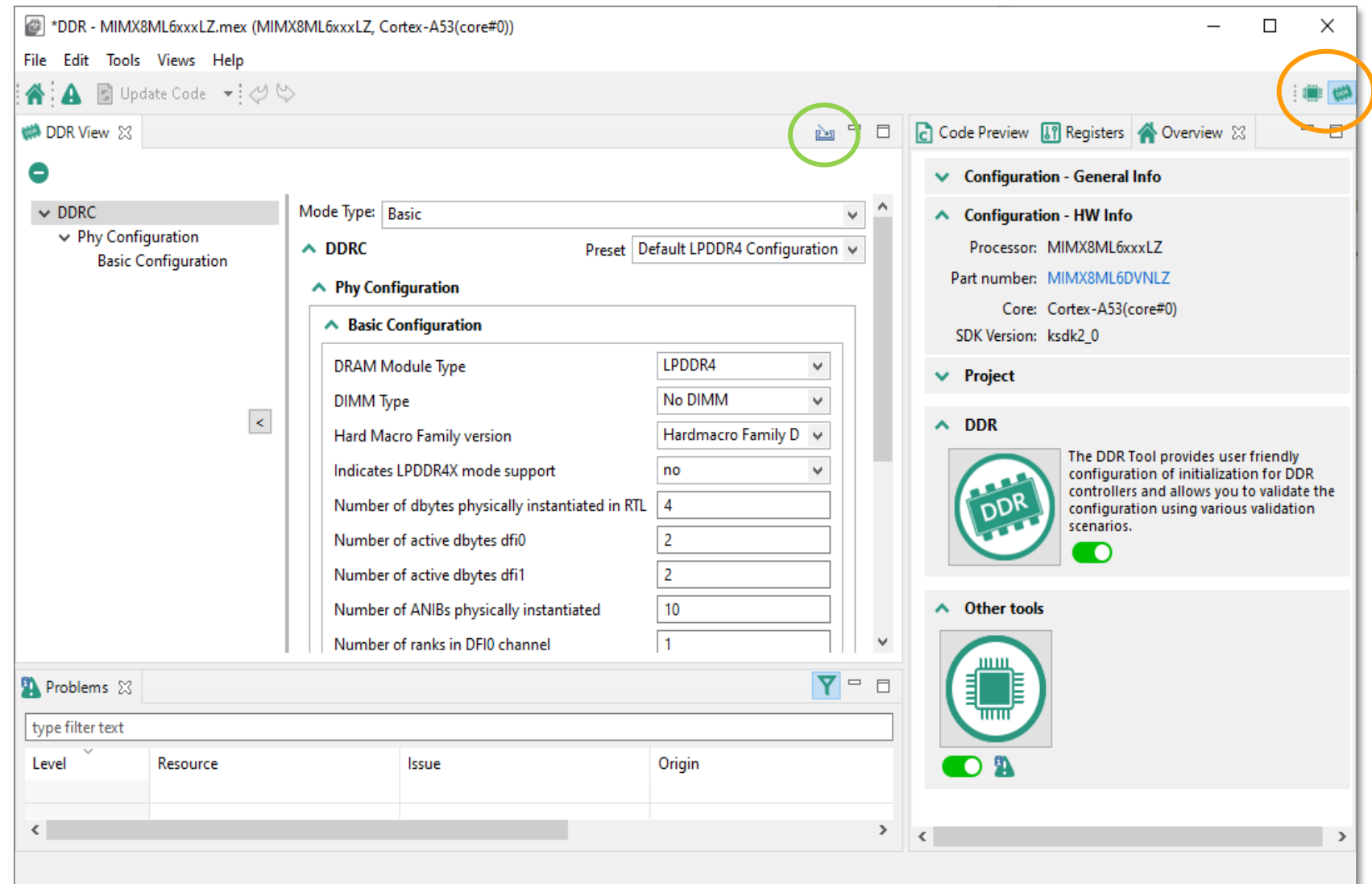
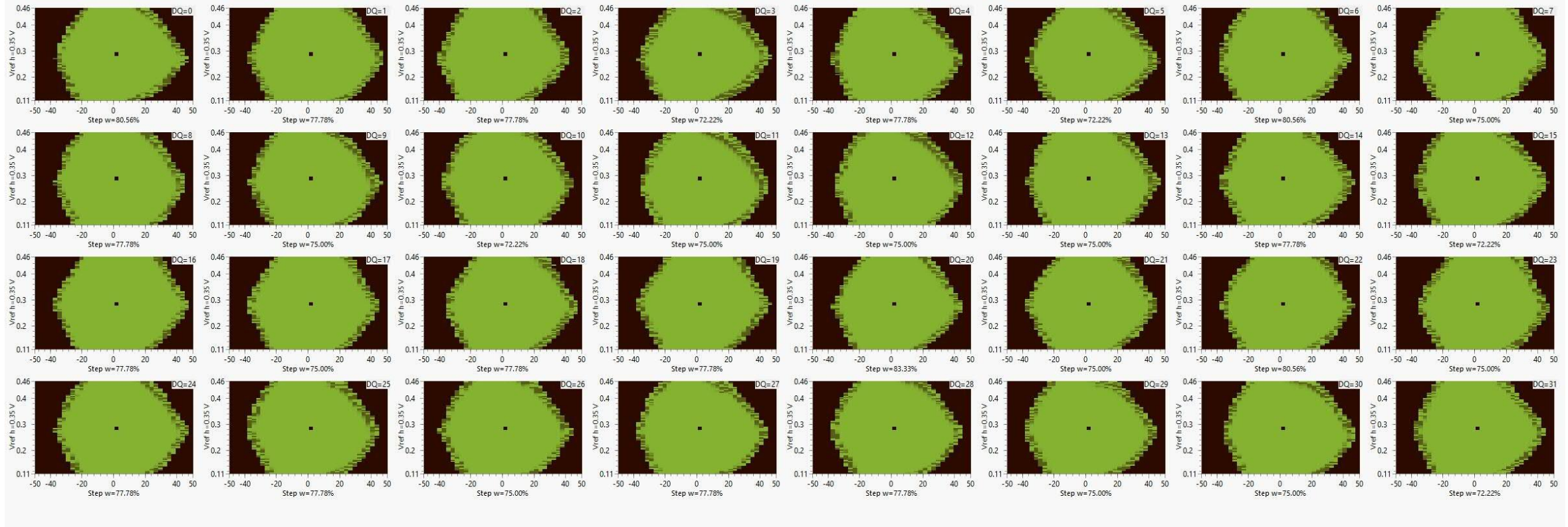


i.MX 8M Plus – LPDDR4 design check

- The Pins Tool now includes a new version of the former „DDR Stress Test Tool“.
- Switch between Pins Tool and DDR Tool using the small **icons** in the right upper corner.
- Load the .ds script from the RPA tool using the small **icon** in the middle
- The new tool can run a training firmware, which generates data for an eye diagram simulation.
- This can help to identify design issues without the need for special measurement equipment.
- Please make yourself familiar with the tool, it's a little bit more complex to use compared to the old version.



i.MX 8M Plus – vTSA tool for LPDDR4 design check



- These are the eye diagram results for all 32 data lines
- The training firmware and the features of the vTSA tool is an ongoing development
- vTSA = Virtual Timing and Signal Analysis
- If you want to learn more, please read the article on the website from Micron and download the white paper:
 - <https://www.micron.com/about/blog/2021/february/vtsa-characterizes-memory-margins-quickly-and-without-test-equipment>