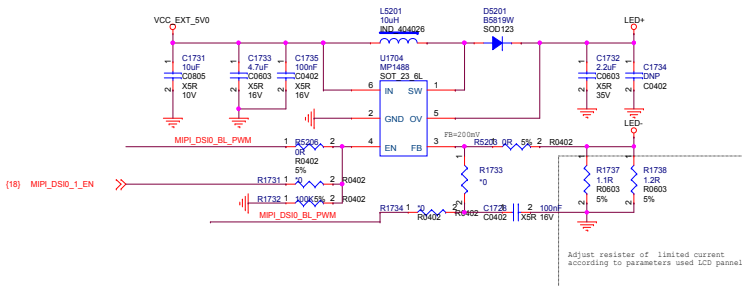
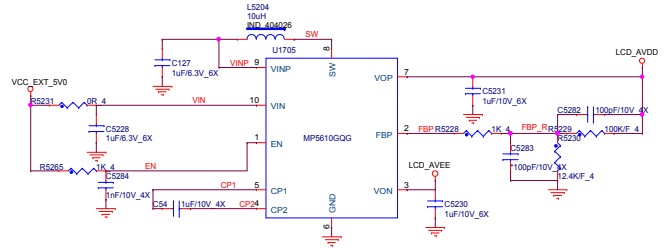


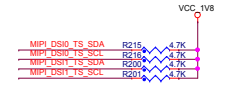
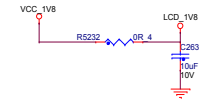
MIPI_DSI0_CLK_P	BL27	MIPI_DSI0_CLK_P
MIPI_DSI0_CLK_N	BN27	MIPI_DSI0_CLK_N
MIPI_DSI0_DATA0_P	BK28	MIPI_DSI0_DATA0_P
MIPI_DSI0_DATA0_N	BN28	MIPI_DSI0_DATA0_N
MIPI_DSI0_DATA1_P	BK28	MIPI_DSI0_DATA1_P
MIPI_DSI0_DATA1_N	BN28	MIPI_DSI0_DATA1_N
MIPI_DSI0_DATA2_P	BL29	MIPI_DSI0_DATA2_P
MIPI_DSI0_DATA2_N	BN29	MIPI_DSI0_DATA2_N
MIPI_DSI0_DATA3_P	BL25	MIPI_DSI0_DATA3_P
MIPI_DSI0_DATA3_N	BN25	MIPI_DSI0_DATA3_N
MIPI_DSI0_GPIQ0_00	BD30	MIPI_DSI0_BL_PWM
MIPI_DSI0_GPIQ0_01	BD28	MIPI_DSI0_REST
MIPI_DSI0_I2C0_SCL	BE29	MIPI_DSI0_TS_SCL
MIPI_DSI0_I2C0_SDA	BE31	MIPI_DSI0_TS_SDA
MIPI_DSI1_CLK_P	BG31	MIPI_DSI1_CLK_P
MIPI_DSI1_CLK_N	BH30	MIPI_DSI1_CLK_N
MIPI_DSI1_DATA0_P	BG33	MIPI_DSI1_DATA0_P
MIPI_DSI1_DATA0_N	BH32	MIPI_DSI1_DATA0_N
MIPI_DSI1_DATA1_P	BG39	MIPI_DSI1_DATA1_P
MIPI_DSI1_DATA1_N	BH28	MIPI_DSI1_DATA1_N
MIPI_DSI1_DATA2_P	BG35	MIPI_DSI1_DATA2_P
MIPI_DSI1_DATA2_N	BH34	MIPI_DSI1_DATA2_N
MIPI_DSI1_DATA3_P	BG27	MIPI_DSI1_DATA3_P
MIPI_DSI1_DATA3_N	BH26	MIPI_DSI1_DATA3_N
MIPI_DSI1_GPIQ0_00	BM24	MIPI_DSI1_TS_RST
MIPI_DSI1_GPIQ0_01	BK24	MIPI_DSI1_TS_INT_B
MIPI_DSI1_I2C0_SCL	BE27	MIPI_DSI1_TS_SCL
MIPI_DSI1_I2C0_SDA	BG25	MIPI_DSI1_TS_SDA

100-Ohm differential pairs

100-Ohm differential pairs



Note:
 U1704 EN pin must support PWM brightness dimming control, Otherwise, it needs to be increased PWM circuit at FB pin.
 R1737&R1738 should be placed close to the power pins of Panel Interface.
 U5200的FB管脚需要能支持PWM动态背光调节功能。
 否则就需要在DCDC的FB管脚增加PWM电路来进行调节。
 R1737&R1738必须靠近屏连接座的电源管脚放置而不是靠近DCDC放置。



DUAL MIPI DSI CONNECTORS

