

Carrier board

TABLE OF CONTENTS:

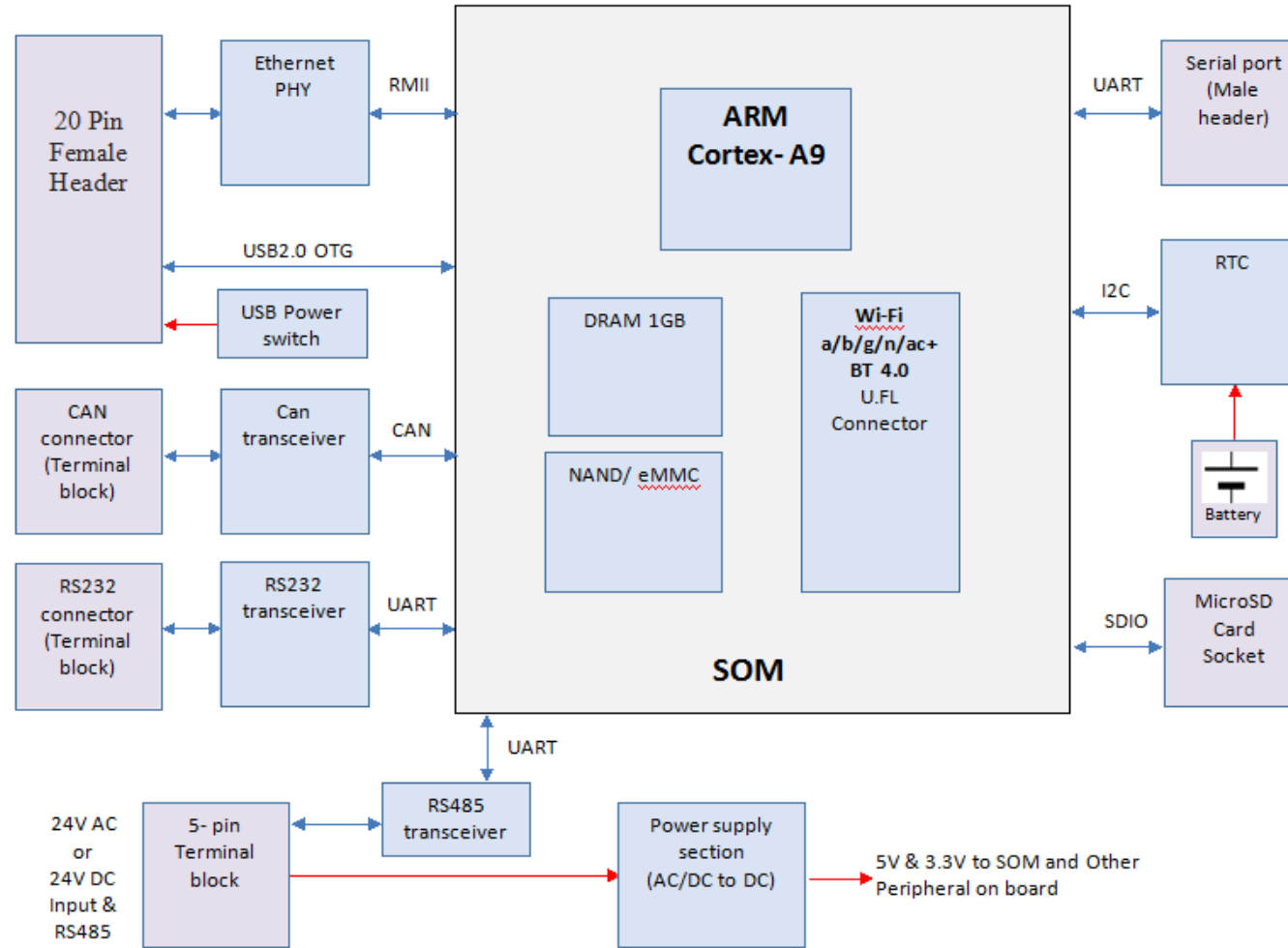
Page No.	Schematic Page
01	Cover Page
02	System Block Diagram
03	Power supply section
04	SOM interface connector
05	Ethernet PHY
06	Ethernet & μ USB Daughter board connector
07	SD card, RTC and Reset
08	RS485, RS232, USB and CAN
09	Revision History

I2C Address Table :

Write	Read	Device
0xA2	0xA3	RTC device

Title			
Cover Page			
Size	Document Number	Filename	Rev
B	xxxxx		0.7
Date:	Monday, January 02, 2017	Sheet	1 of 9

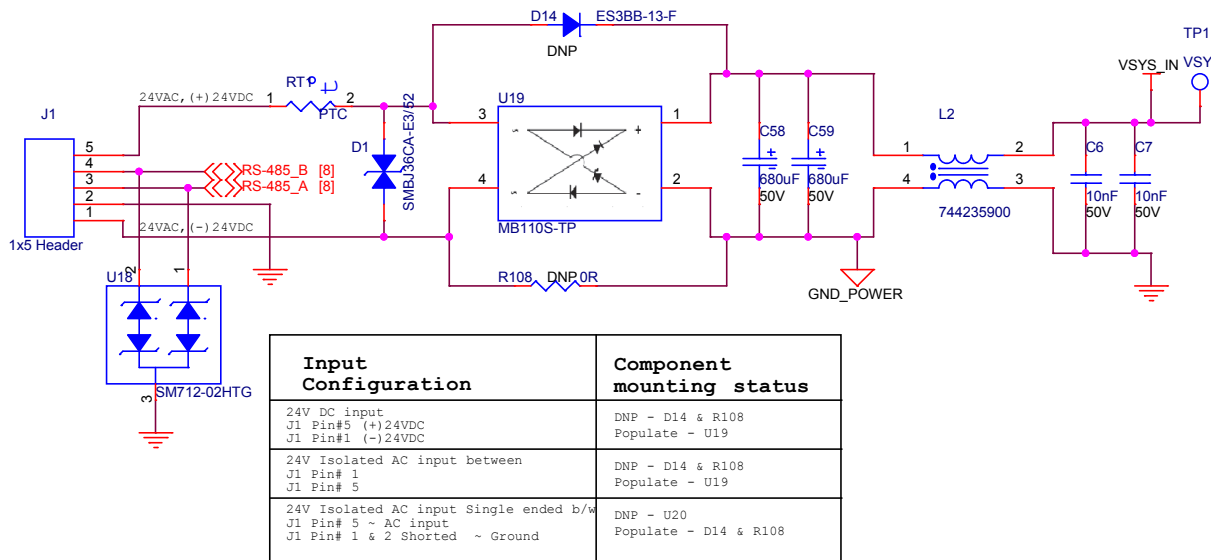
System Block Diagram



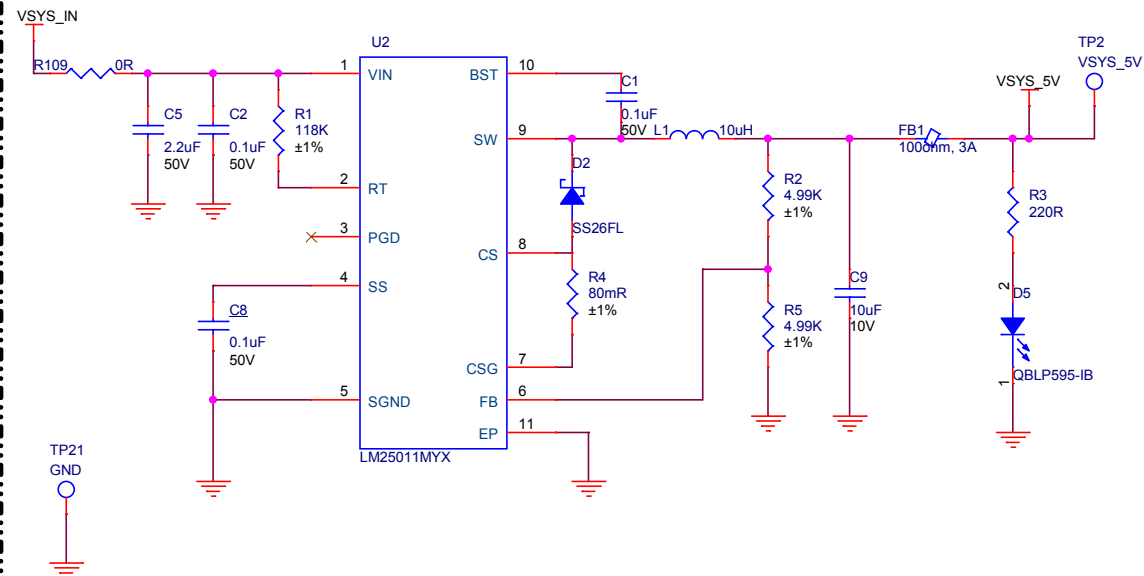
Title			
<Title>			
Size	Document Number	Filename	Rev
B	<Doc>	<Filename>	<Rev Code>
Date:	Monday, January 02, 2017	Sheet	2 of 9

Power Supply Section

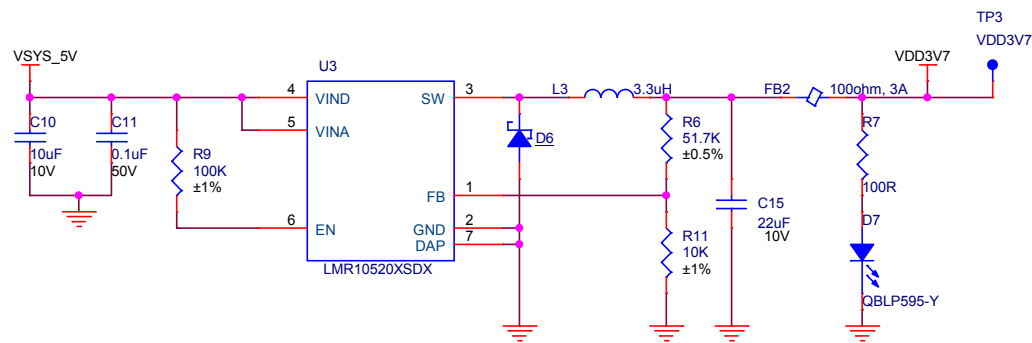
24V AC/DC Bridge Rectifier



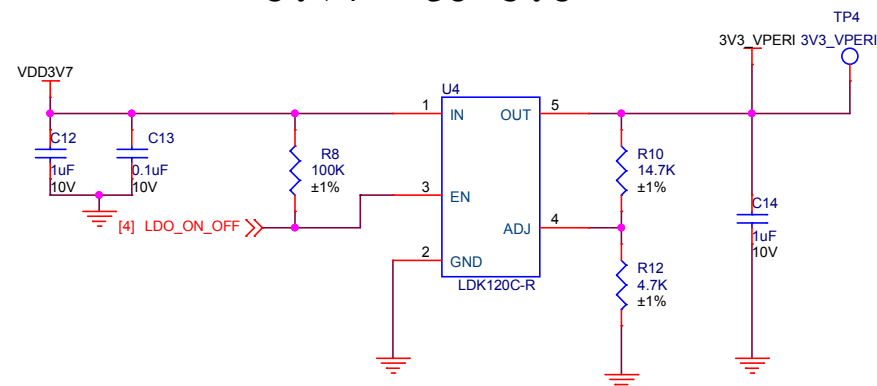
24V to 5V



5V to 3.7V

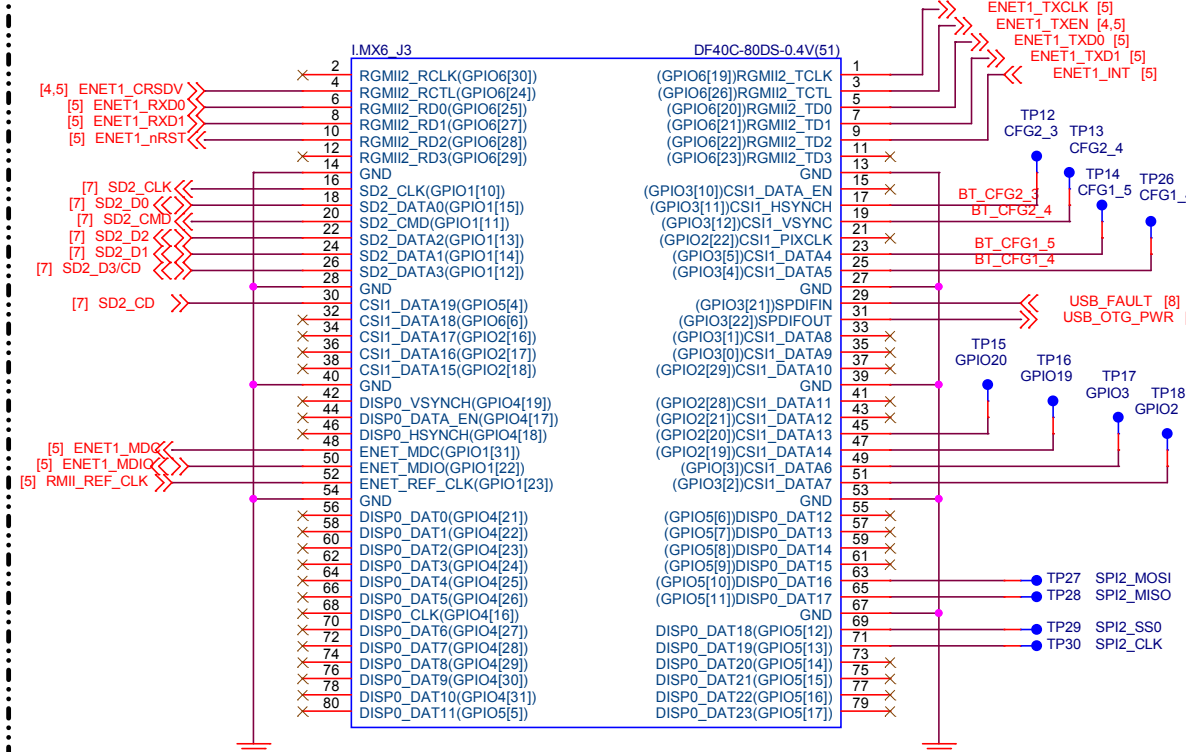
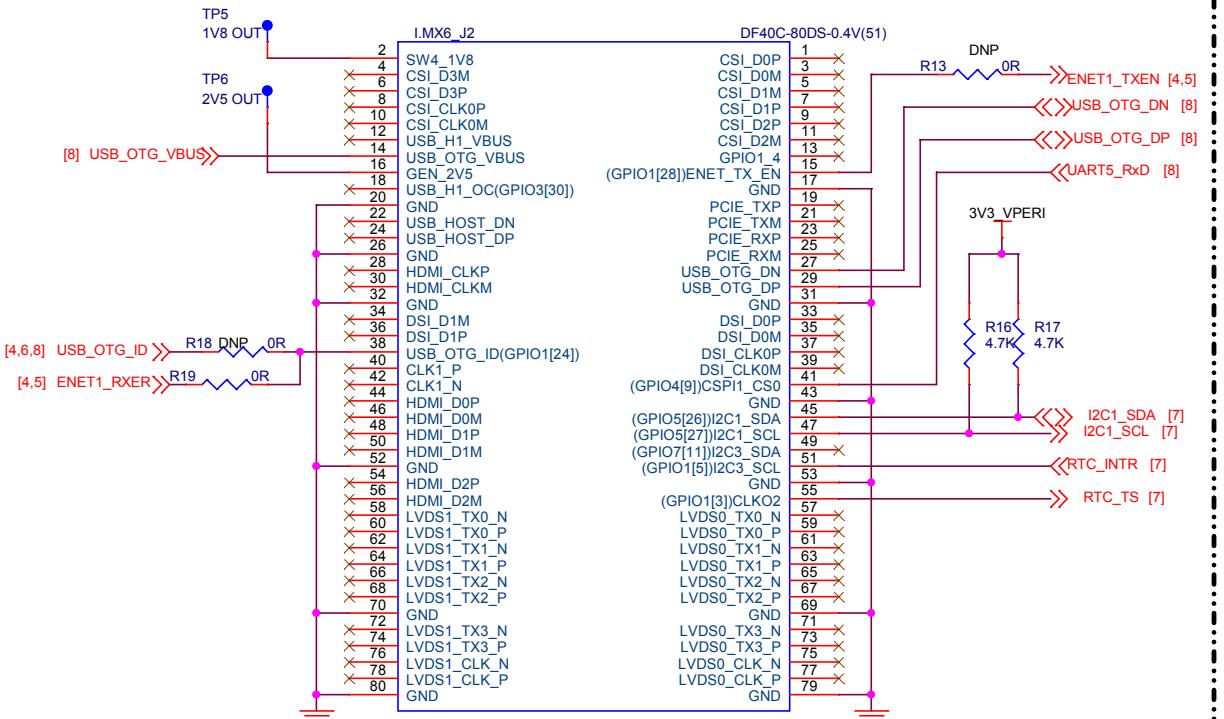
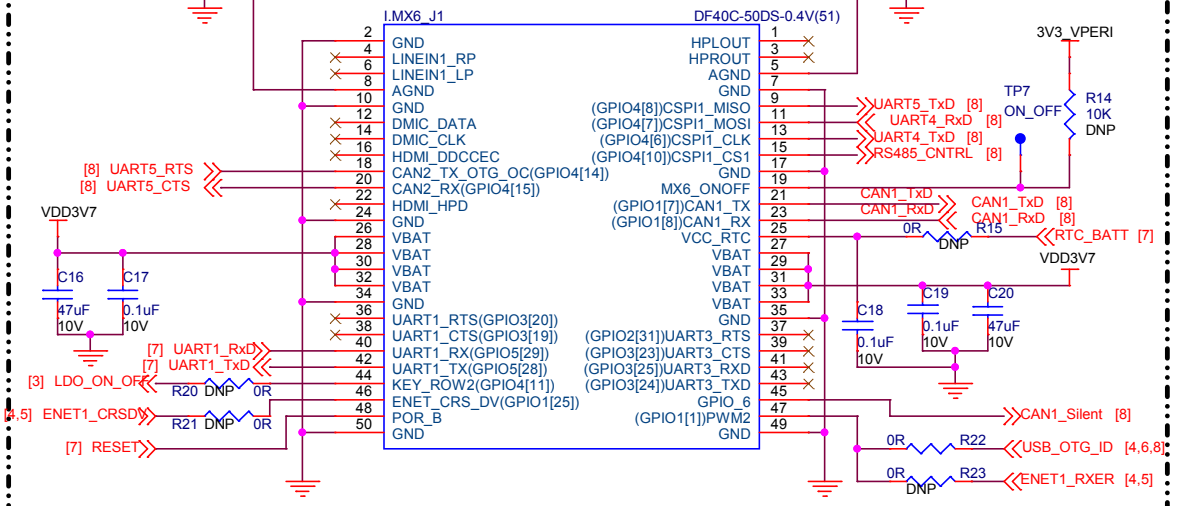


3.7V to 3.3



Title			
Power Supply Section			
Size	Document Number	Filename	Rev
B	xxxxx		0.7
Date:	Monday, January 02, 2017	Sheet	3 of 9

SOM interface connector



SYSTEM BOOT CONFIGURATIONS

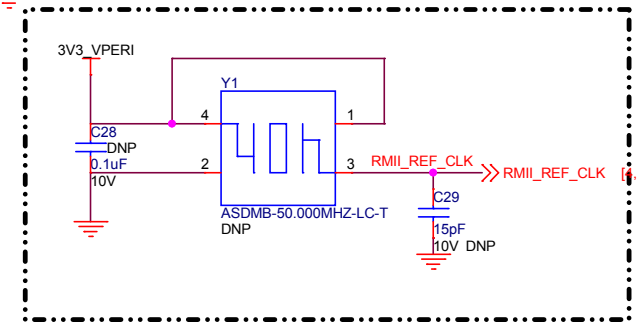
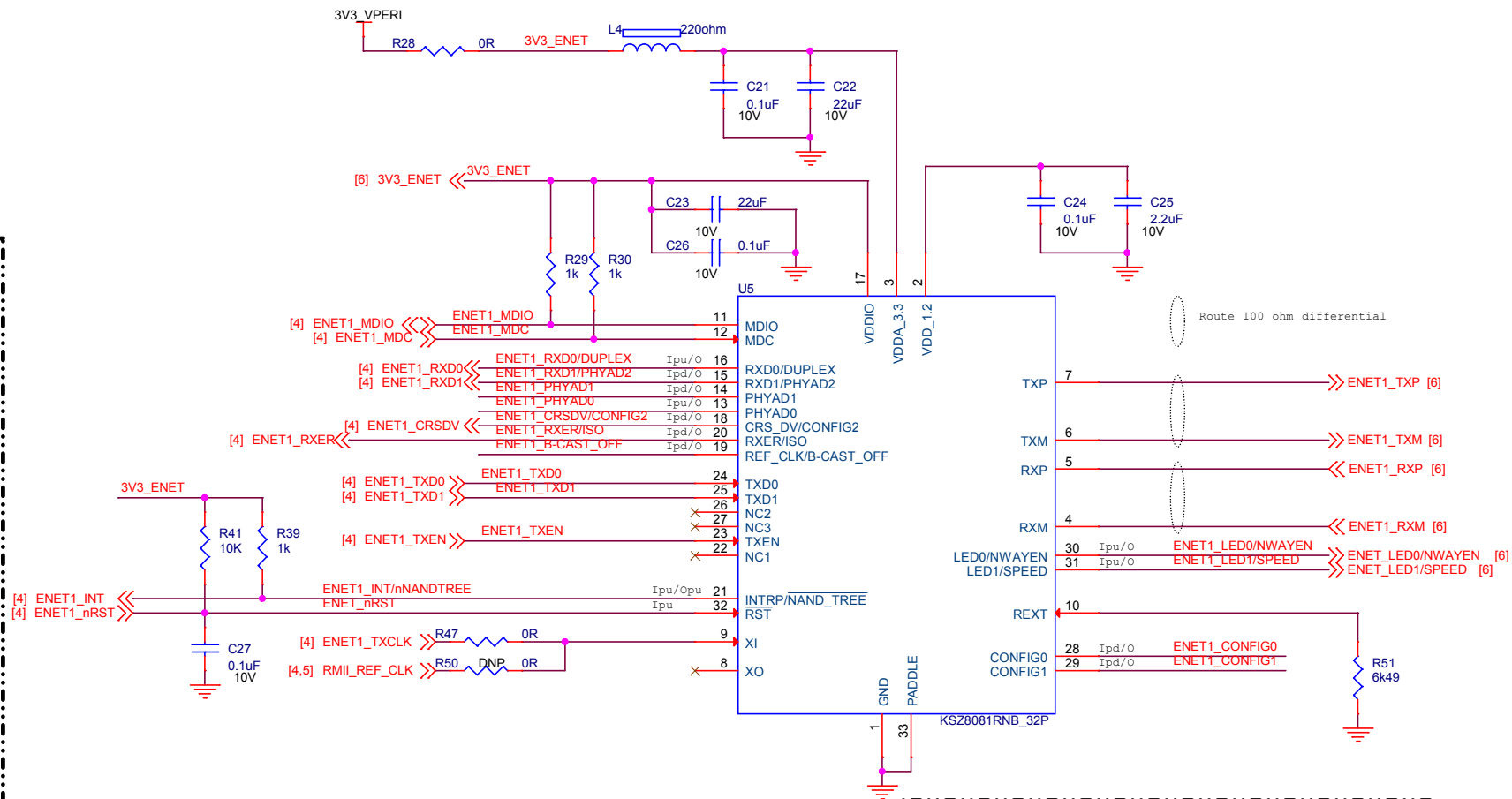
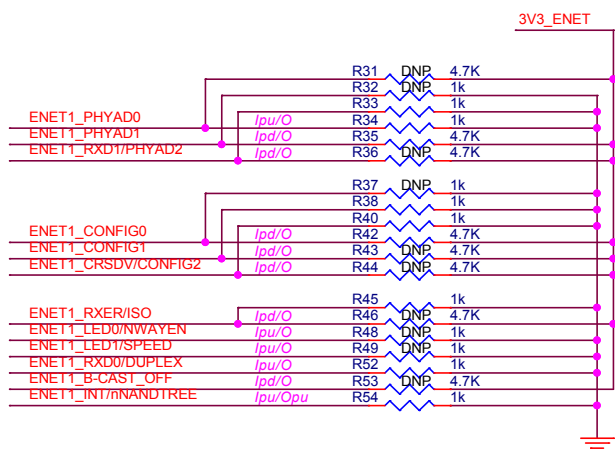
BT_CFG1_5	BT_CFG2_4	BT_CFG2_3	BOOT Device
0	0	1	SD2 BOOT
1	1	0	eMMC(Default)

NOTE:- "BT_CFG1_5 & BT_CFG2_4 has internal Pull up"

Title			
SOM interface connector			
Size	Document Number	Filename	Rev
B	xxxxx		0.7
Date:	Monday, January 02, 2017	Sheet	4 of 9

Ethernet PHY

ENET CFG

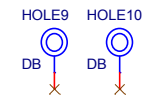
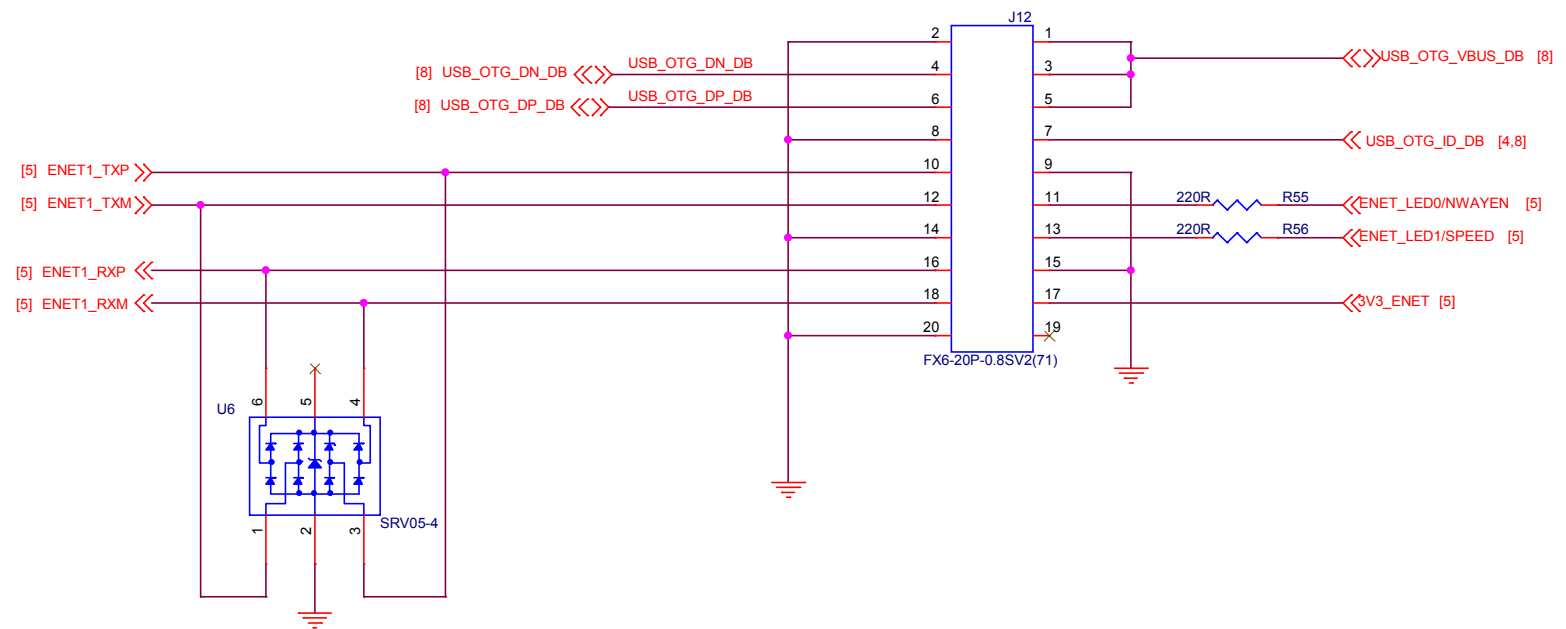


# CFG	Description
PHYAD[2:0]	PHY ADDR 00-XXX (00001 DEFAULT)
CONFIG[2:0]	IF MODE 001 RMII 101 RMII Back-to-Back xxx Reserved-not used
ISO	ISOLATE mode Pull-up = Enable Pull-down (default) = Disable
SPEED	SPEED mode Pull-up (default) = 100Mbps Pull-down = 10Mbps

# CFG	Description
DUPLEX	DUPLEX mode Pull-up (default) = Half Duplex Pull-down = Full Duplex
NWAYEN	Nway Auto-Negotiation Pull-up (default) = Enable Pull-down = Disable
B_CAST_OFF	Broadcast Off - for PHY Address 0 Pull-up = PHY Address 0 set as unique PHY addr Pull-down (default) = PHY Address 0 set as broadcast PHY addr
NAND_TREE#	NAND Tree Mode Pull-up (default) = Disable Pull-down = Enable

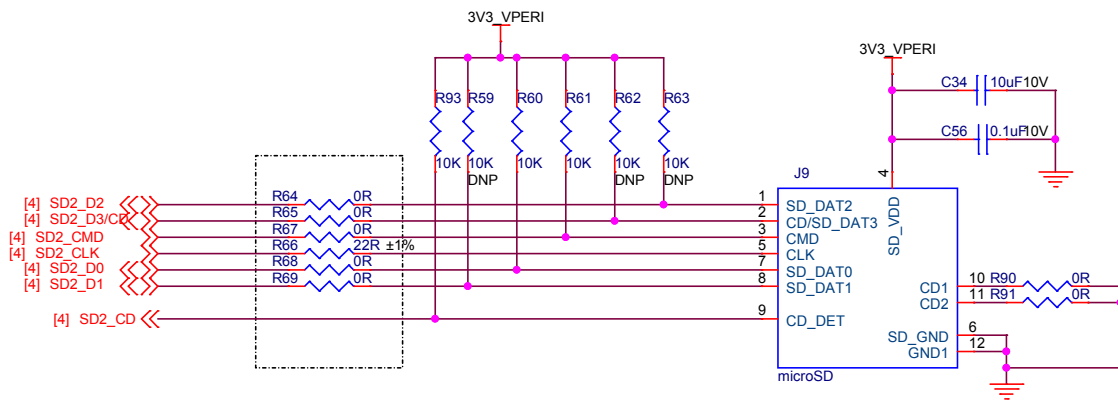
Title				
Ethernet PHY				
Size	Document Number	Filename	Rev	
B	xxxxx		0.7	
Date:	Monday, January 02, 2017	Sheet	5	of 9

Ethernet & μ USB Daughter board connector



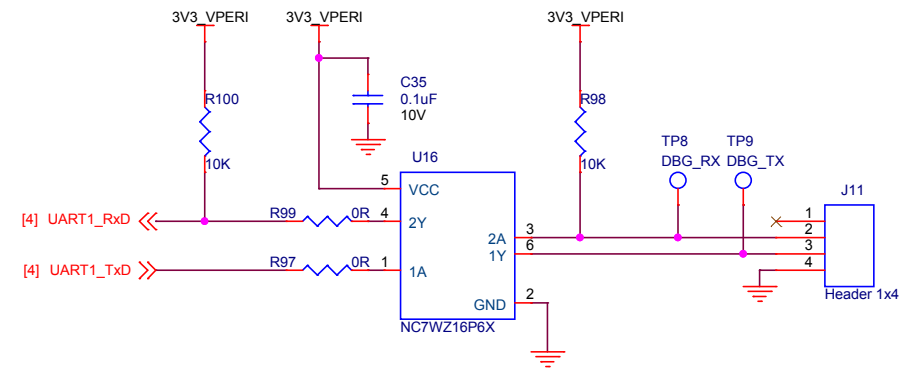
Title			
Ethernet & μ USB Daughter board connector			
Size	Document	Number	Filename
B	xxxxx		
Date:	Monday, January 02, 2017	Sheet	6 of 9
			Rev 0.7

μSD Card

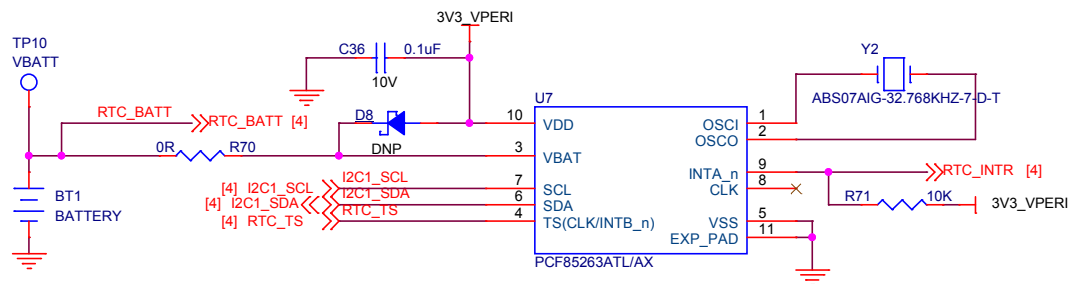


Note:- Place Termination resistors at Source side.

Debug Port



RTC



Dummy part

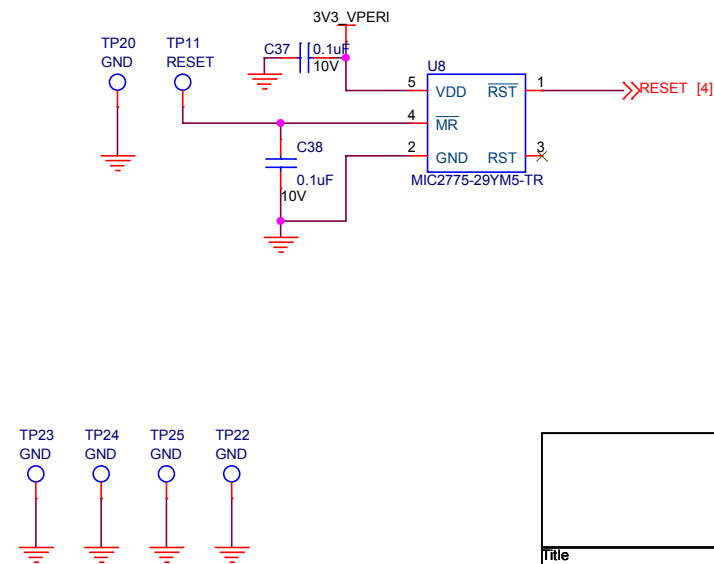
DMY1

ANT

DMY2

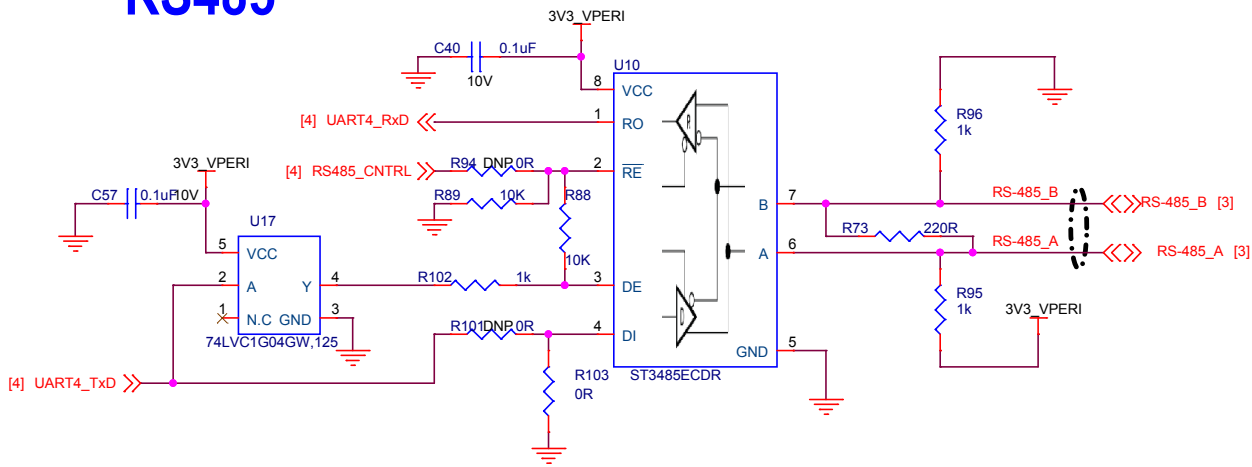
DART-MX6

RESET

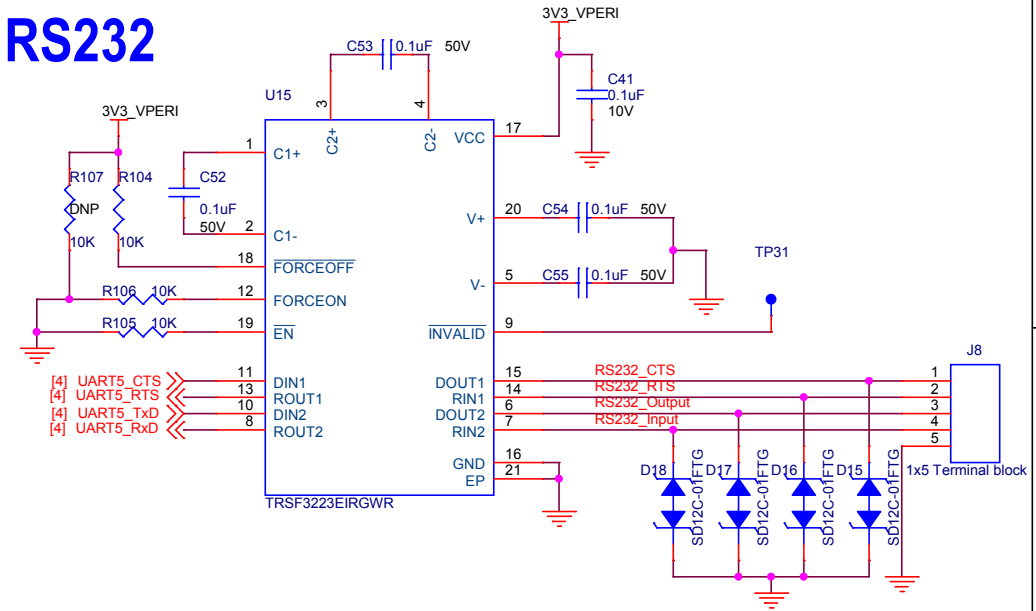


Title			
SD Card, RTC & Debug			
Size	Document	Number	Filename
B	xxxxx		
Date:	Monday, January 02, 2017	Sheet	7 of 9
			Rev 0.7

RS485

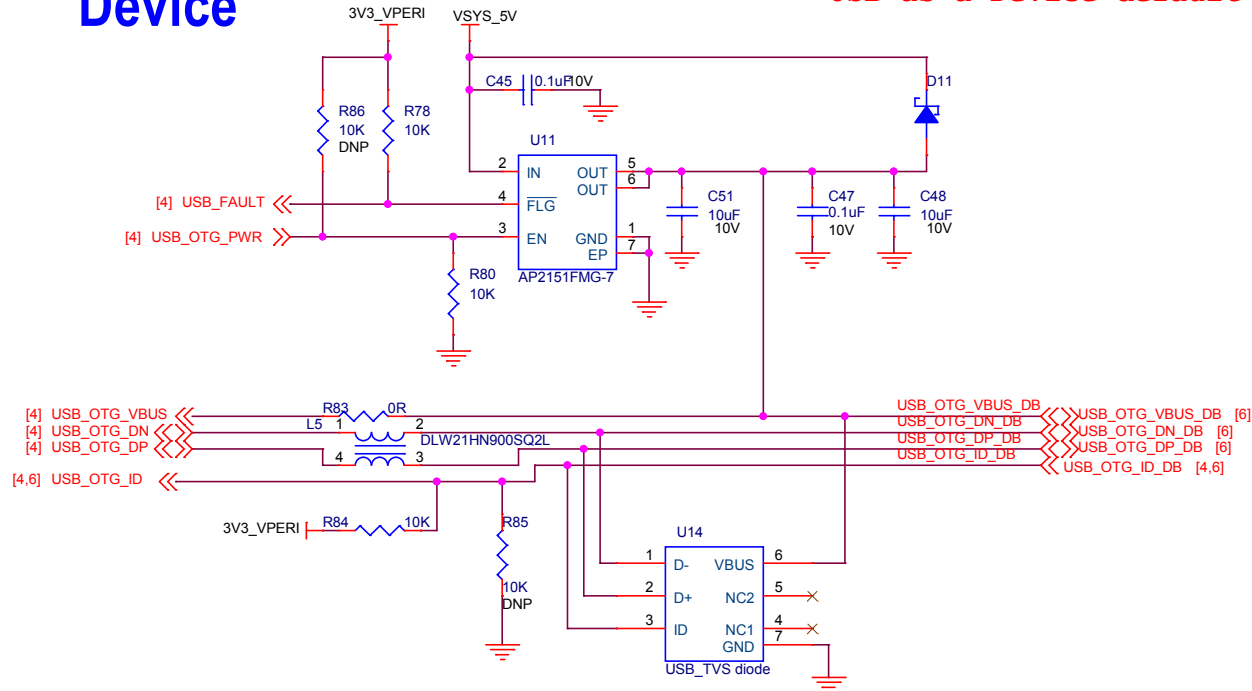


RS232

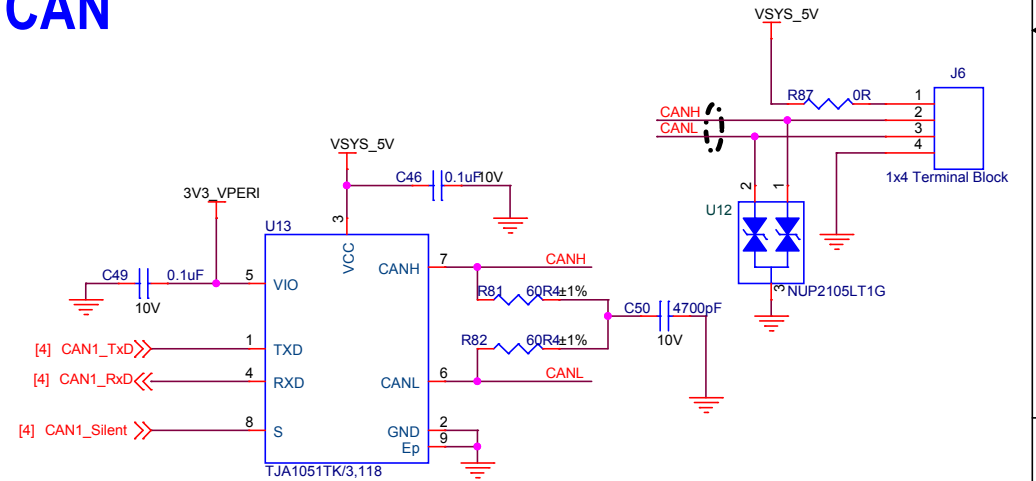


USB Host / Device

USB as a Device default



CAN



Title			
RS485, RS232, USB & CAN			
Size	Document Number	Filename	Rev
B	xxxxx		0.7
Date:	Monday, January 02, 2017	Sheet	8 of 9