

Converting Projects to CodeWarrior™ ColdFire® V7.2

by: Sriram Adhyapak

Project Conversion

Converting a project created in CodeWarrior™ Development Studio for ColdFire® Architectures V7.1 to V7.2 is a simple procedure. One major change in V7.2 may impact projects when moving from V7.1 to V7.2. The Main Standard Libraries (MSL) has been replaced by the Embedded Warrior Libraries (EWL). See [Libraries](#) section for more information on EWL.

This document provides a general overview of the changes in V7.2 and a quick guide to successfully migrate projects from V7.1 to V7.2.

This document contains these topics:

- [Terms and Abbreviations](#)
- [Libraries](#)
- [Access Include Paths](#)
- [Librarian](#)
- [Parameter Calling Convention](#)
- [Assembly Function Declarations and Definitions](#)
- [EWL Memory Allocation Scheme](#)
- [Additional Information](#)

Terms and Abbreviations

The following terms and abbreviations are used in this document:

- MSL - Main Standard Libraries
- EWL - Embedded Warrior Libraries
- V7.1 - Refers to CodeWarrior Development Studio for ColdFire Architectures, Version 7.1.
- V7.2 - Refers to CodeWarrior Development Studio for ColdFire Architectures, Version 7.2.

Libraries

Embedded Warrior Libraries (EWL) introduces a new library set aiming at reducing the memory footprint taken by IO operations and introduces a simpler memory allocator. The IO operations are divided in three categories: printing, scanning and file operations.

The printing and scanning formatters for EWL are grouped in an effort to provide only the support required for the application:

```
int - integer and string processing
int_FP - integer, string and floating point
int_LL - integer (including long long) and string
int_FP_LL - all but wide chars
c9x - all including wide char
```

The buffered IO can be replaced by raw IO, this works solely when printf and scanf are used to perform IO, all buffering is bypassed and writing direct to the device is used. EWL libraries contain prebuilt versions for all formatters and IO modes. Selecting a model combination enables correct compiling and linking. The EWL layout for ColdFire is built per core architecture. It is composed of:

```
libm.a - math support (c9x or not)
libc.a - non c9x std C libs
libc99.a - c9x libs
librt.a - runtime libraries
libc++.a - non-c9x matching c++ libraries
libstdc++.a - c9x/c++ compliant libs
fp_coldfire.a - FPU emulation libraries
```

Selecting an EWL model for the libraries frees the user from adding libraries to the project, the linker will determine from the settings the correct library set, these settings are: processor, pid/pic, hard/soft FPU. The process of selecting a model is explained in the Librarian section below. Although the library names are known to the toolset their location is not.

Access Include Paths

The "System Access Paths" point to code in MSL. These have to be changed to point to EWL. The new system access paths are (compiler relative & recursive)...

```
{Compiler}\ColdFire_Support\ewl\EWL_C
{Compiler}\ColdFire_Support\ewl\EWL_C++
{Compiler}\ColdFire_Support\ewl\EWL_Runtime
{Compiler}\ColdFire_Support\ewl\lib
```

NOTE These access path changes are done automatically during Project conversion by the IDE, when opening a project that was built using V7.1.

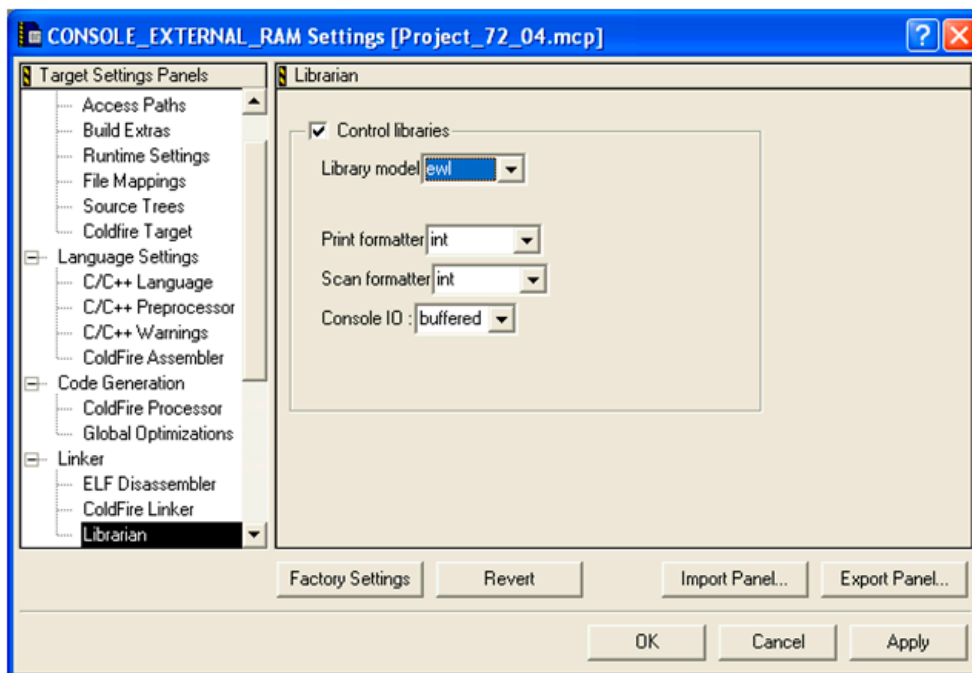
Librarian

The Librarian panel allows the user to select a "Library model" from a pre-defined list of available models. The lists of available models are:

- "ewl"
- "ewl_c++"
- "c9x"
- "c9x_c++"

The "ewl" and "ewl_c++" have a smaller memory footprint, while the "c9x" and "c9x_c++" models are fully C99 compliant. The "ewl" and "ewl_c++" models have relevant sub-models that allow the user to pick the desired print and scan formatters and the desired IO scheme. The "c9x" and "c9x_c++" models do not have sub-models.

Figure 1.1 Console External RAM Settings - Librarian



For the print and scan sub-models the available choices and the functionality that they cover are listed in the "Libraries" section above.

When choosing the "c9x" or the "c9x_c++" models, the sub-model drop-downs are disabled, as they do not apply to these models.

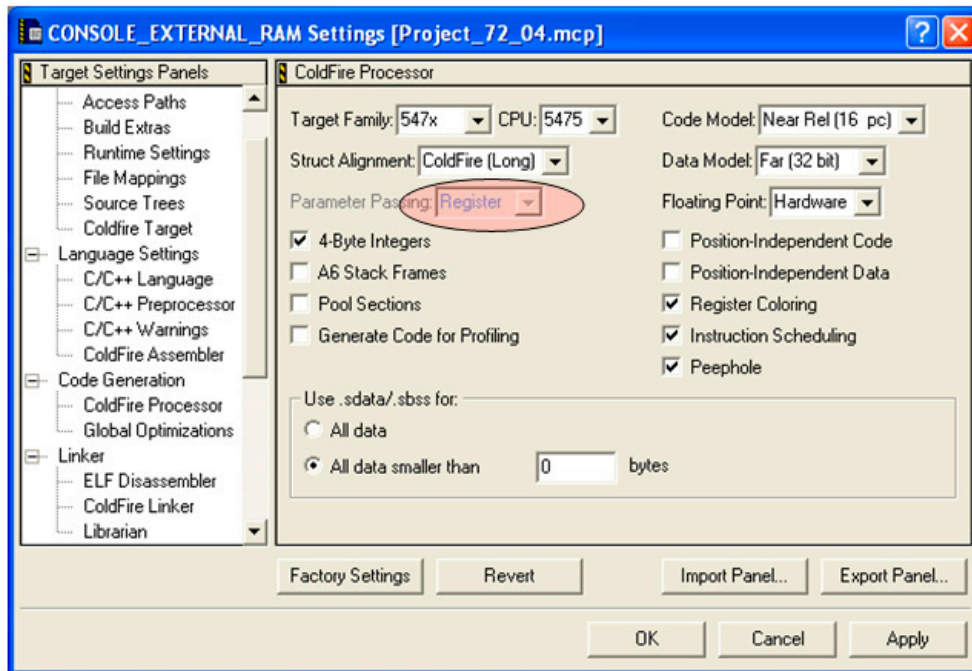
The "Control libraries" check-box, determines whether or not the EWL mechanism of library selection will be used by the build tools (compiler and linker). When this check-box is not selected, the user has to manually add the required library files to the project. The user can select the relevant library files by choosing the correct architecture (v2, v3 or v4) and whether or not FPU and PIC/PID is used.

NOTE When opening a V7.1 project using V7.2 the converter, chooses the "ewl" model with the print and scan formatter set to "int_FP" and "Console IO" set to "buffered".

Parameter Calling Convention

The parameter passing affects space and time performance. The best performance for both occurs when selecting the register passing ABI. New tools solely support that ABI.

Figure 1.2 Console External RAM Settings - ColdFire Processor



NOTE When using the V7.2 product the "Parameter Passing" drop down, in the "ColdFire Processor" panel is disabled and fixed to "Register".

Assembly Function Declarations and Definitions

For all functions in the application that are pure assembly functions, the function definition and declaration(s) should contain a "declspec" qualifier that defines the parameter passing convention. For example,

```
asm void __declspec(register_abi) TrapHandler_printf(void)
```

Without this declspec, there is a warning

WARNING! "possible abi conflict, use __declspec(register_abi):"
generated by the compiler for all such assembly only functions.

Please note while converting V7.1 projects to V7.2 the user has to modify their code such that the assembly functions contain the "__declspec" qualifier. Also if the function contains code that assumes a different calling convention, and is called from a "C" function, for example,

```
asm void mcf5xxx_wr_vbr(unsigned long) { /* Set VBR */  
  move.l4(SP),D0  
  movec d0,VBR  
  nop  
  rts  
}
```

The code should be modified to use the "Register" parameter passing convention. In this example, in addition to adding the "declspec" mentioned above, the line `move.l4(SP),D0` must be removed.

EWL Memory Allocation Scheme

EWL supports an improved memory allocation scheme. The memory allocation scheme in EWL requires the following symbols to be defined in the LCF file: `__mem_limit` and `__stack_safety`. `__mem_limit` signifies an address beyond which memory cannot be allocated. `__stack_safety` is the size of the cushion between the stack and the heap.

In the example below, it is set to 16 bytes, which is typical.

```
__mem_limit = __HEAP_END;  
__stack_safety = 16;
```

These symbols can be added to the LCF file right after the definition of `__HEAP_END`

Additional Information

See the CodeWarrior™ Development Studio for ColdFire® Architectures V7.2 Release Notes and documentation for more information.

Visit <http://www.freescale.com/support> for additional assistance.

How to Reach Us:

Home Page:
www.freescale.com

E-mail:
support@freescale.com

USA/Europe or Locations Not Listed:
Freescale Semiconductor
Technical Information Center, CH370
1300 N. Alma School Road
Chandler, Arizona 85224
+1-800-521-6274 or +1-480-768-2130
support@freescale.com

Europe, Middle East, and Africa:
Freescale Halbleiter Deutschland GmbH
Technical Information Center
Schatzbogen 7
81829 Muenchen, Germany
+44 1296 380 456 (English)
+46 8 52200080 (English)
+49 89 92103 559 (German)
+33 1 69 35 48 48 (French)
support@freescale.com

Japan:
Freescale Semiconductor Japan Ltd.
Headquarters
ARCO Tower 15F
1-8-1, Shimo-Meguro, Meguro-ku,
Tokyo 153-0064, Japan
0120 191014 or +81 3 5437 9125
support.japan@freescale.com

Asia/Pacific:
Freescale Semiconductor Hong Kong Ltd.
Technical Information Center
2 Dai King Street
Tai Po Industrial Estate
Tai Po, N.T., Hong Kong
+800 2666 8080
support.asia@freescale.com

For Literature Requests Only:
Freescale Semiconductor Literature Distribution Center
P.O. Box 5405
Denver, Colorado 80217
1-800-521-6274 or 303-675-2140
Fax: 303-675-2150
LDCForFreescaleSemiconductor@hibbertgroup.com

Information in this document is provided solely to enable system and software implementers to use Freescale Semiconductor products. There are no express or implied copyright licenses granted hereunder to design or fabricate any integrated circuits or integrated circuits based on the information in this document.

Freescale Semiconductor reserves the right to make changes without further notice to any products herein. Freescale Semiconductor makes no warranty, representation or guarantee regarding the suitability of its products for any particular purpose, nor does Freescale Semiconductor assume any liability arising out of the application or use of any product or circuit, and specifically disclaims any and all liability, including without limitation consequential or incidental damages. "Typical" parameters that may be provided in Freescale Semiconductor data sheets and/or specifications can and do vary in different applications and actual performance may vary over time. All operating parameters, including "Typicals", must be validated for each customer application by customer's technical experts. Freescale Semiconductor does not convey any license under its patent rights nor the rights of others. Freescale Semiconductor products are not designed, intended, or authorized for use as components in systems intended for surgical implant into the body, or other applications intended to support or sustain life, or for any other application in which the failure of the Freescale Semiconductor product could create a situation where personal injury or death may occur. Should Buyer purchase or use Freescale Semiconductor products for any such unintended or unauthorized application, Buyer shall indemnify and hold Freescale Semiconductor and its officers, employees, subsidiaries, affiliates, and distributors harmless against all claims, costs, damages, and expenses, and reasonable attorney fees arising out of, directly or indirectly, any claim of personal injury or death associated with such unintended or unauthorized use, even if such claim alleges that Freescale Semiconductor was negligent regarding the design or manufacture of the part.

Freescale™ and the Freescale logo are trademarks of Freescale Semiconductor, Inc. CodeWarrior™ is a trademark or registered trademark of Freescale Semiconductor, Inc. StarCore® is a registered trademark of Freescale Semiconductor, Inc. in the United States and/or other countries. All other product or service names are the property of their respective owners.

© Freescale Semiconductor, Inc. 2009. All rights reserved.