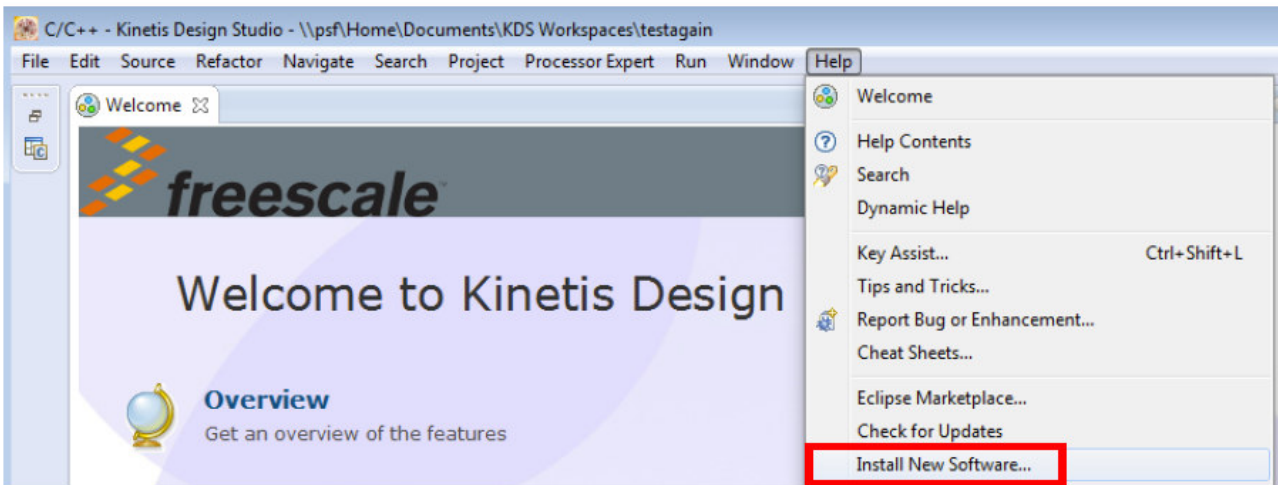
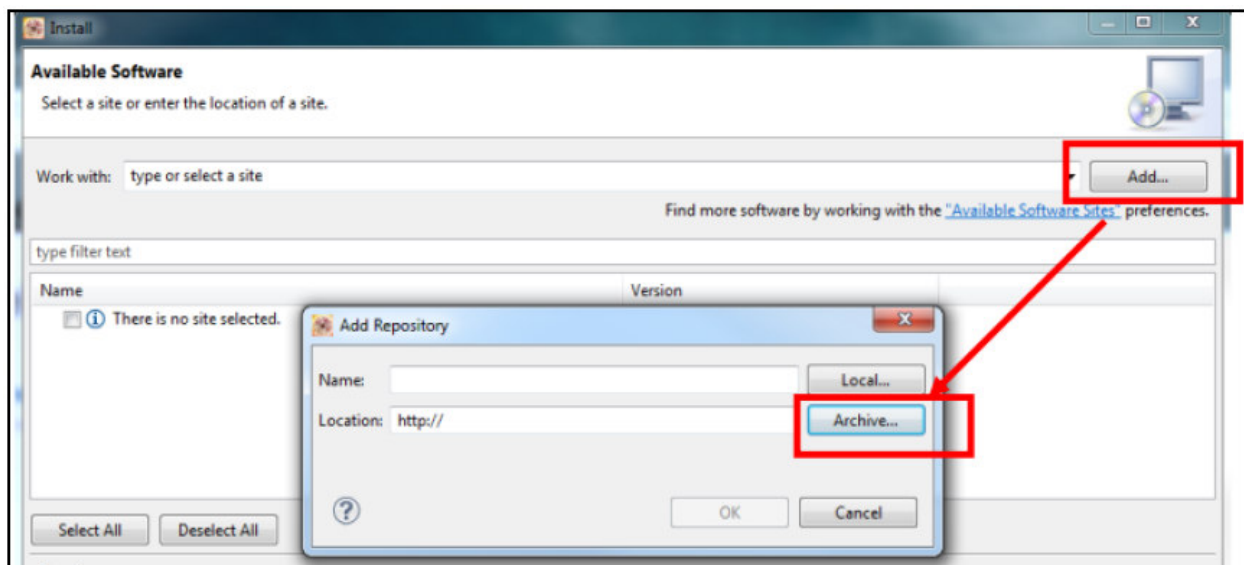


## Installing KSDK 1.1 Eclipse Update

1. Select “Help -> Install New Software”.

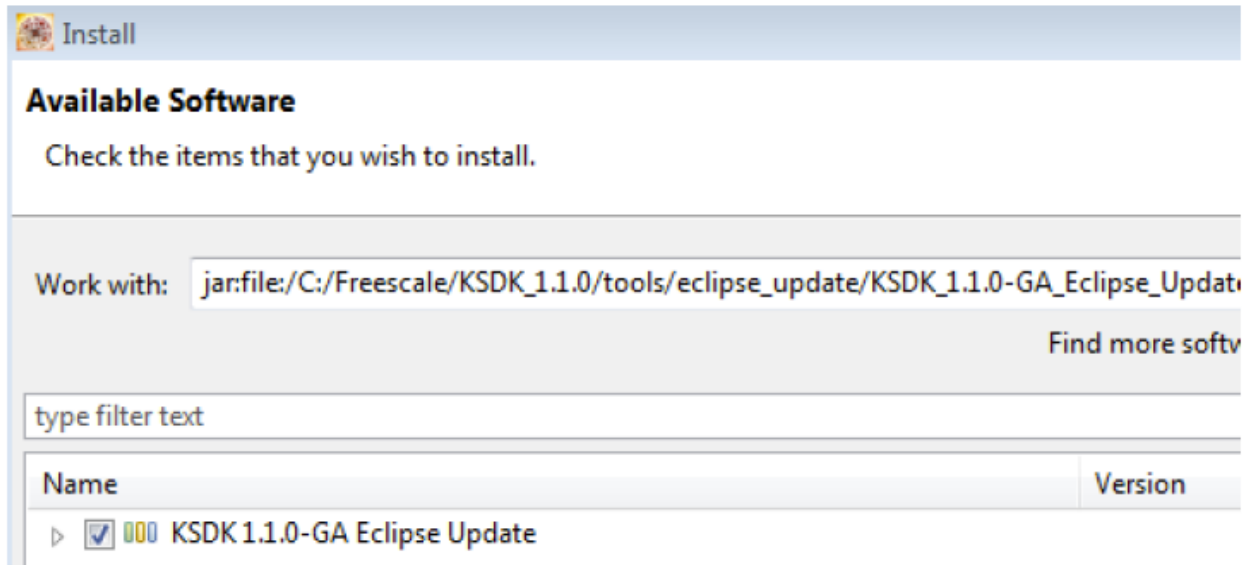


2. In the Install New Software dialog box, click the “Add” button in the upper right corner. Then, in the Add Repository dialog, select the “Archive” button.



3. In the Repository archive dialog box, browse the KSDK install directory.

4. Enter the “...\KSDK\_1.1.0\tools\eclipse\_update” folder and select the “KSDK\_1.1.0\_Eclipse\_Update.zip file”.
5. Click “Open”, and the “OK” button in the Add Repository dialog box.
6. The KSDK update shows up in the list of the original Install dialogs.



7. Check the box to the left of the KSDK Eclipse Update and click the “Next” button in the lower right corner.
8. Follow the remaining instructions to finish the installation of the update.

After the update is applied, restart the IDE for the changes to take effect.