

BB-RS-232 Flash Programming Instructions for CodeWarrior 10.4

M. Manning

5/2/14

Version 1.0

Requirements

- CodeWarrior version 10.4 or later.
- A BB-RS232 adapter.
- P&E Micro programmer (e.g. USB Multilink, Cyclone Max).

Summary of Steps

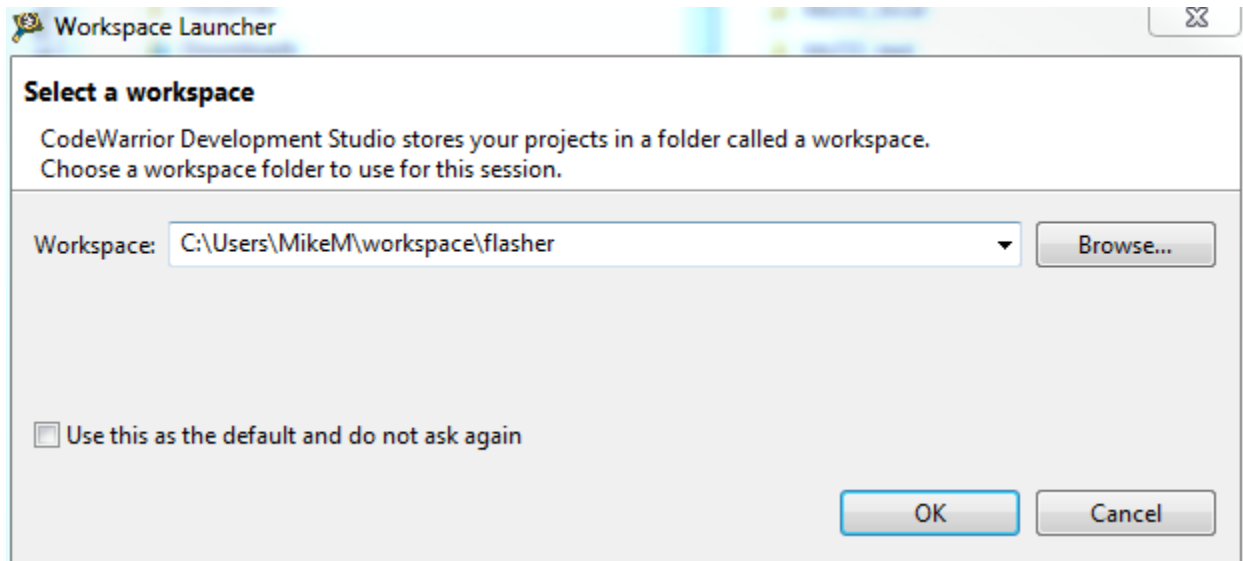
- Hardware Setup
- Open an empty or existing CodeWarrior workspace.
- Create a default MCF52259 project and add it to the workspace. This project will be used to program flash program images on the target device.
- Erase and program the flash from a file image.
- Remove power from the adapter and disconnect the P&E Micro programmer.
- Power up the adapter and verify operation.

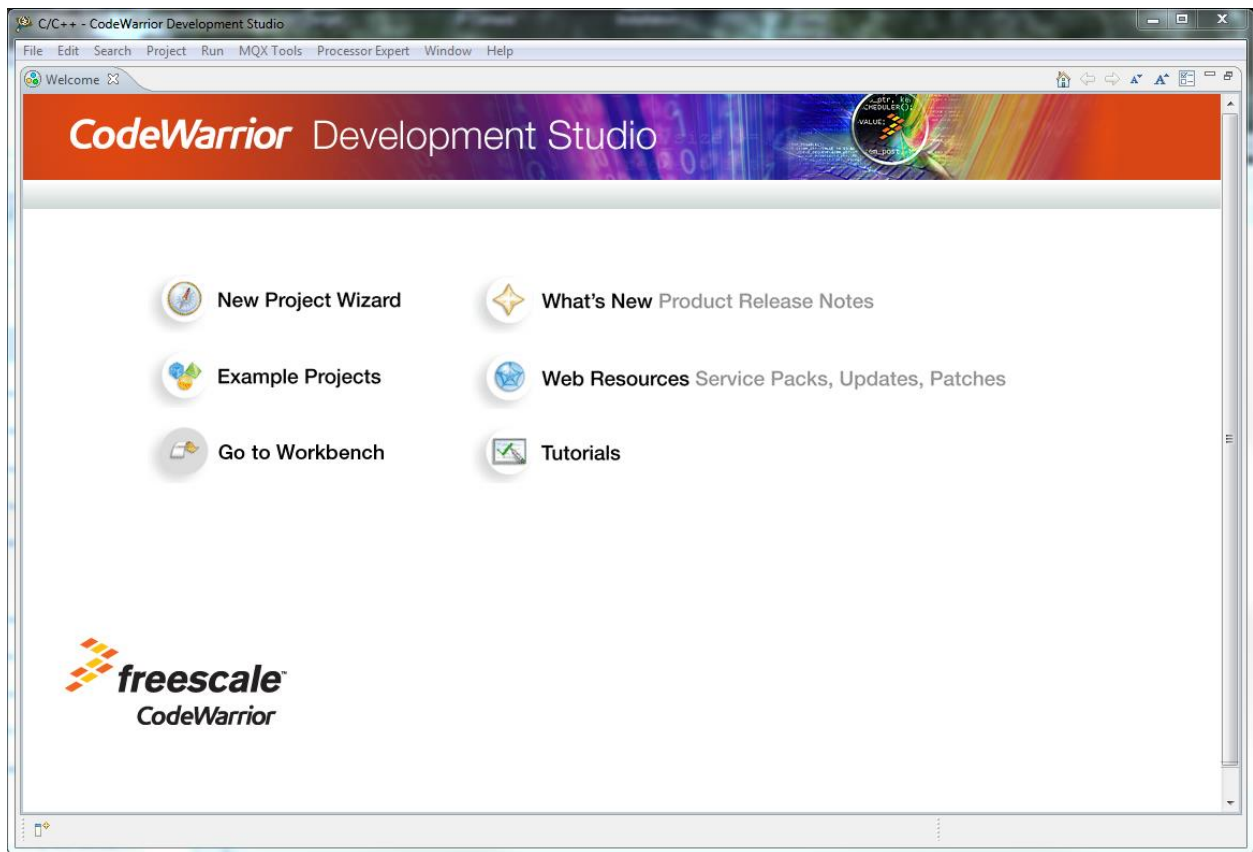
Hardware Setup

- Remove power from the BB-RS232 adapter.
- Connect a P&E Micro programmer (e.g. USB Multilink, Cyclone Max) to the target BB-RS232 adapter.
- Power up the BB-RS232 adapter.

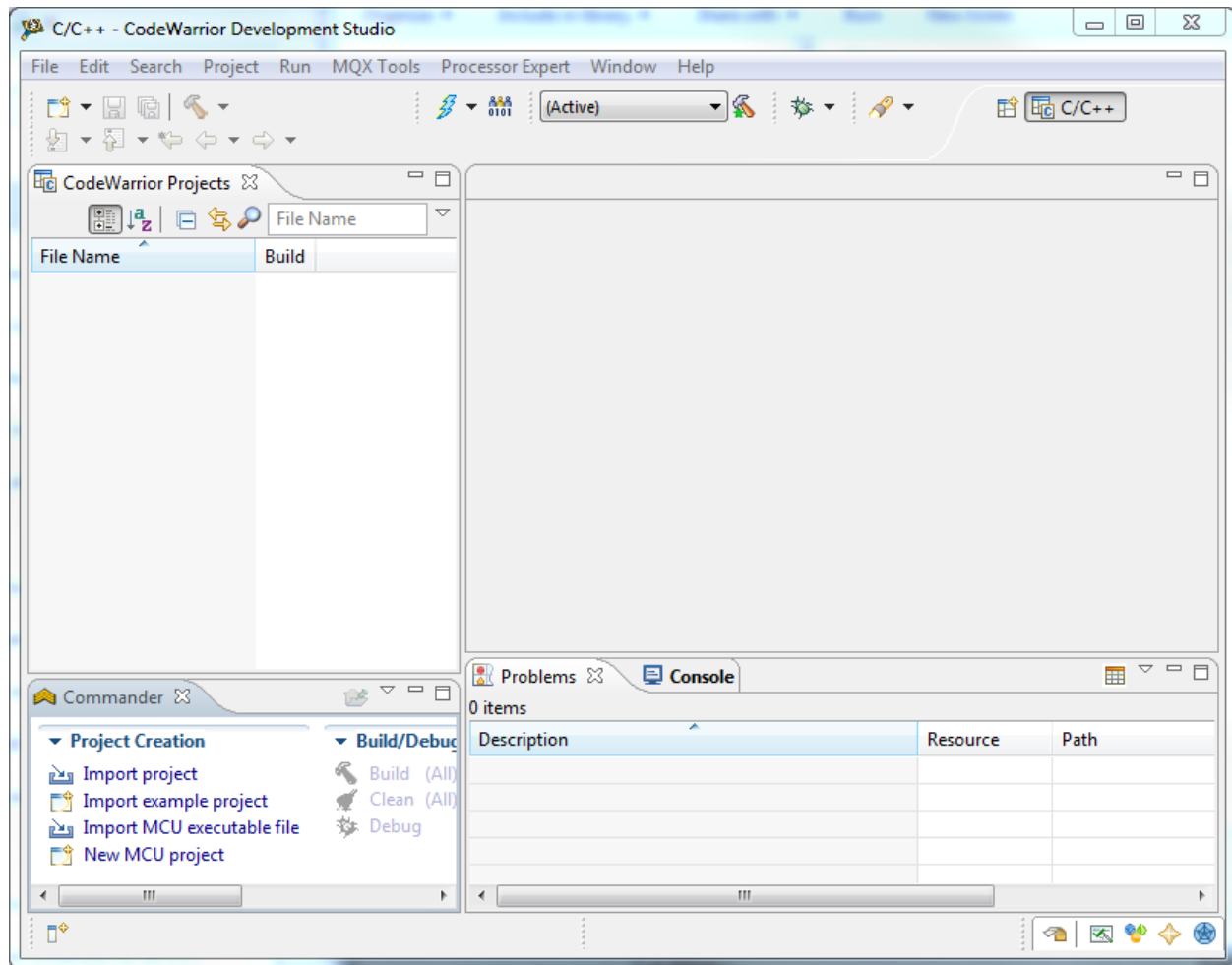
Open or Create a CodeWarrior Workspace for Flash Programming

Open CodeWarrior and follow the prompts to select or create a workspace. The default directory is in the workspaces directory. We created a “flasher” workspace for this example.





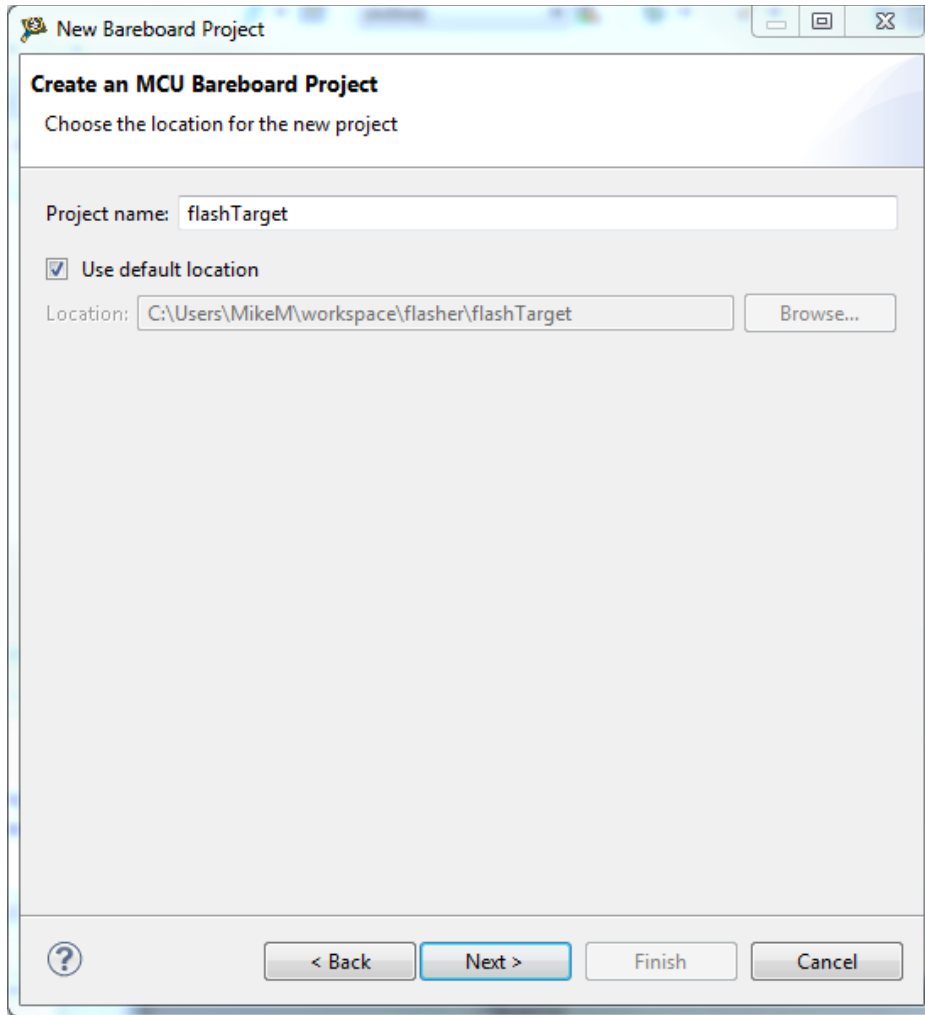
Select Go to Workbench from the main CodeWarrior screen.



An empty workspace will look something like the above screenshot. The next step is to create a basic MCF52259 project and add it to the workspace. This project will be used to program the flash images on the target device.

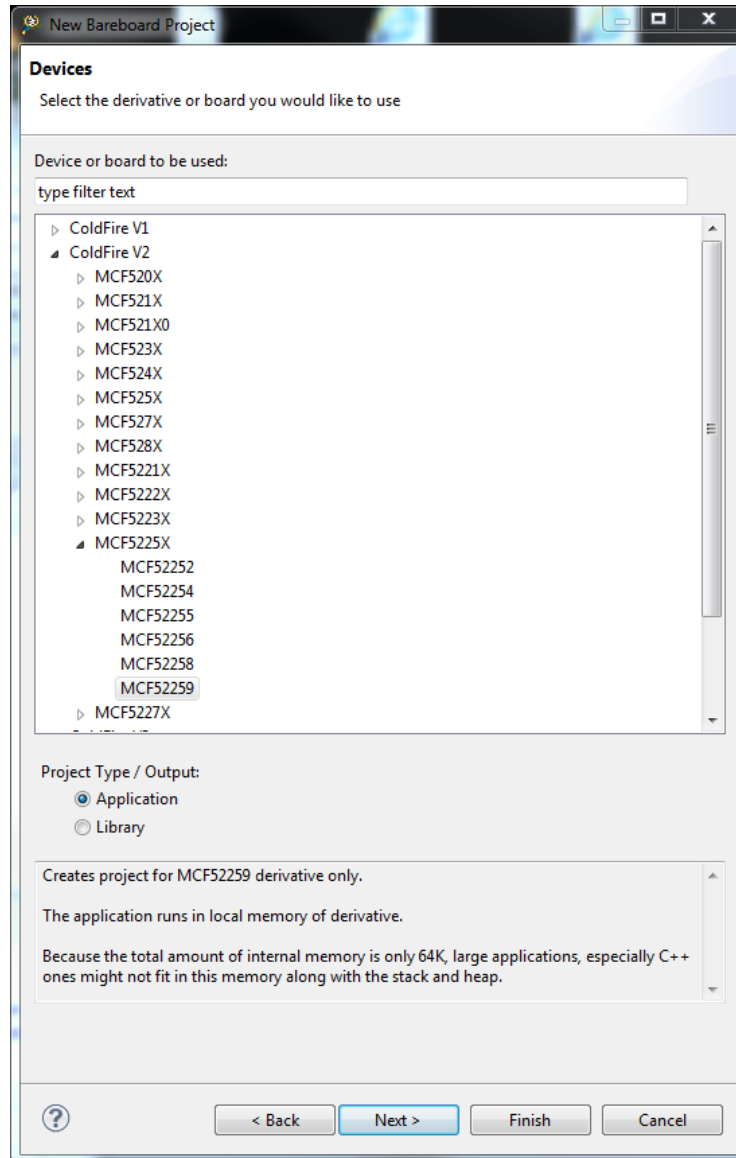
Create a MCU 52259 Project in the Workspace

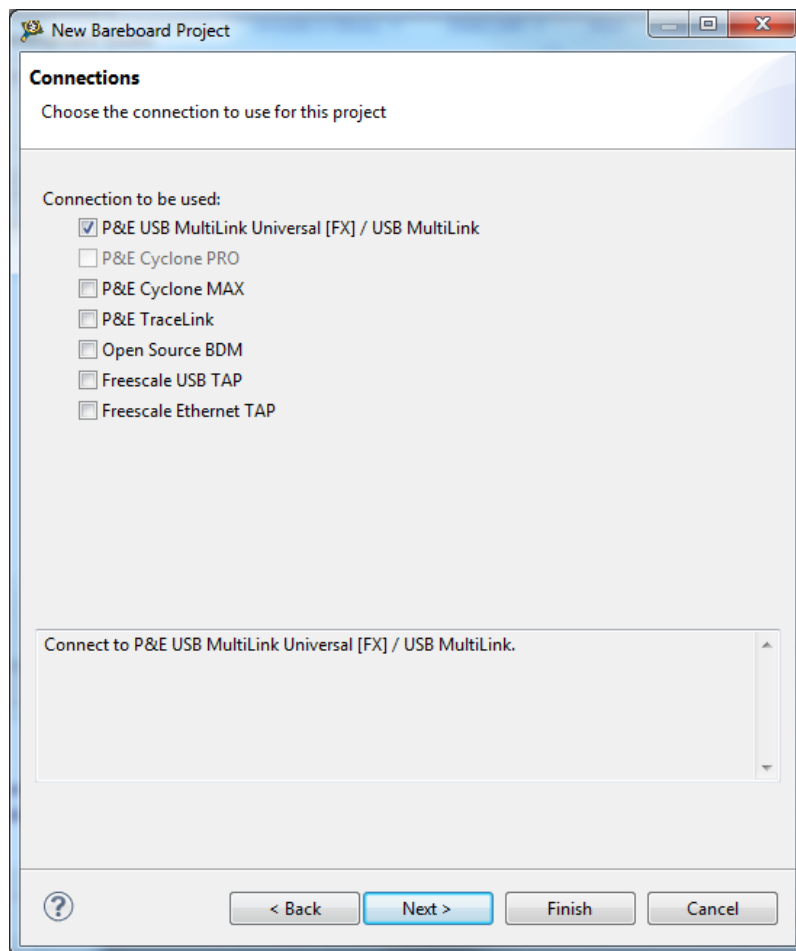
Right mouse click in the CodeWarrior Projects view or select “New MCU Project” in the Commander view. Select “Bareboard Project” if necessary. We’ve named ours “flashTarget”.



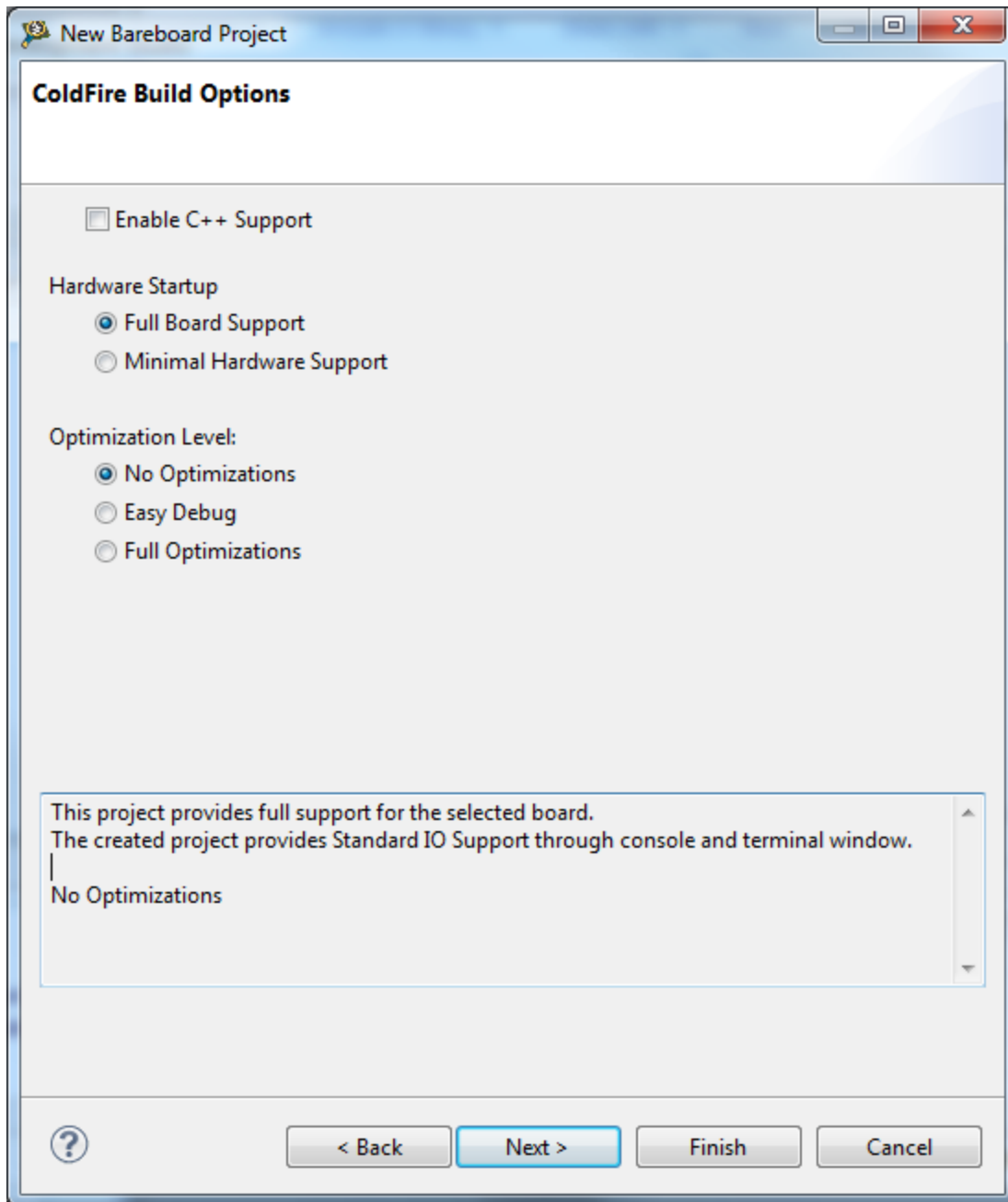
Press Next to proceed to the Devices configuration dialog.

Select the MCU type for the target (ColdFire V2 MCF52259) and proceed to the next dialog.

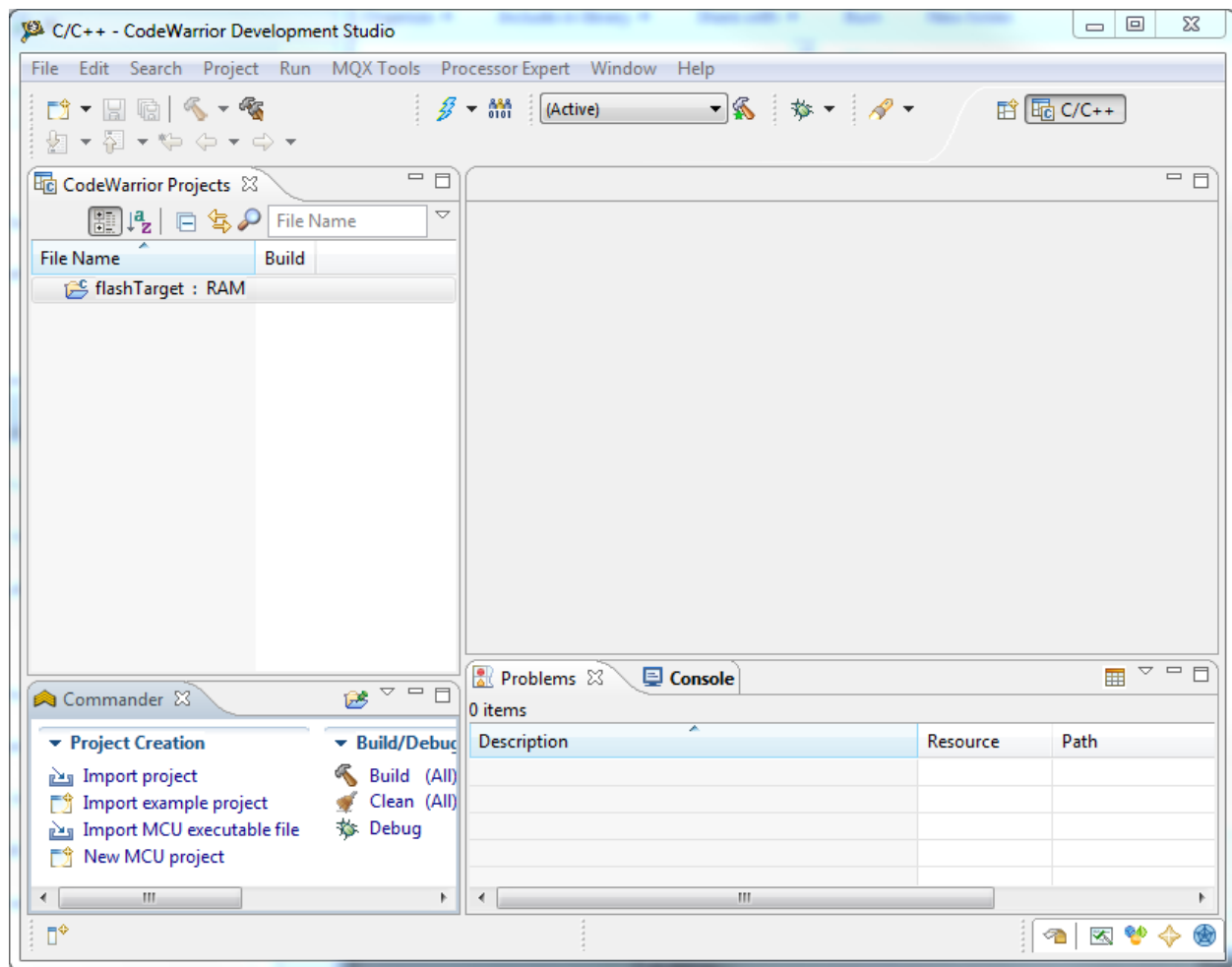




Select your P&E Micro connection and proceed to the next dialog.

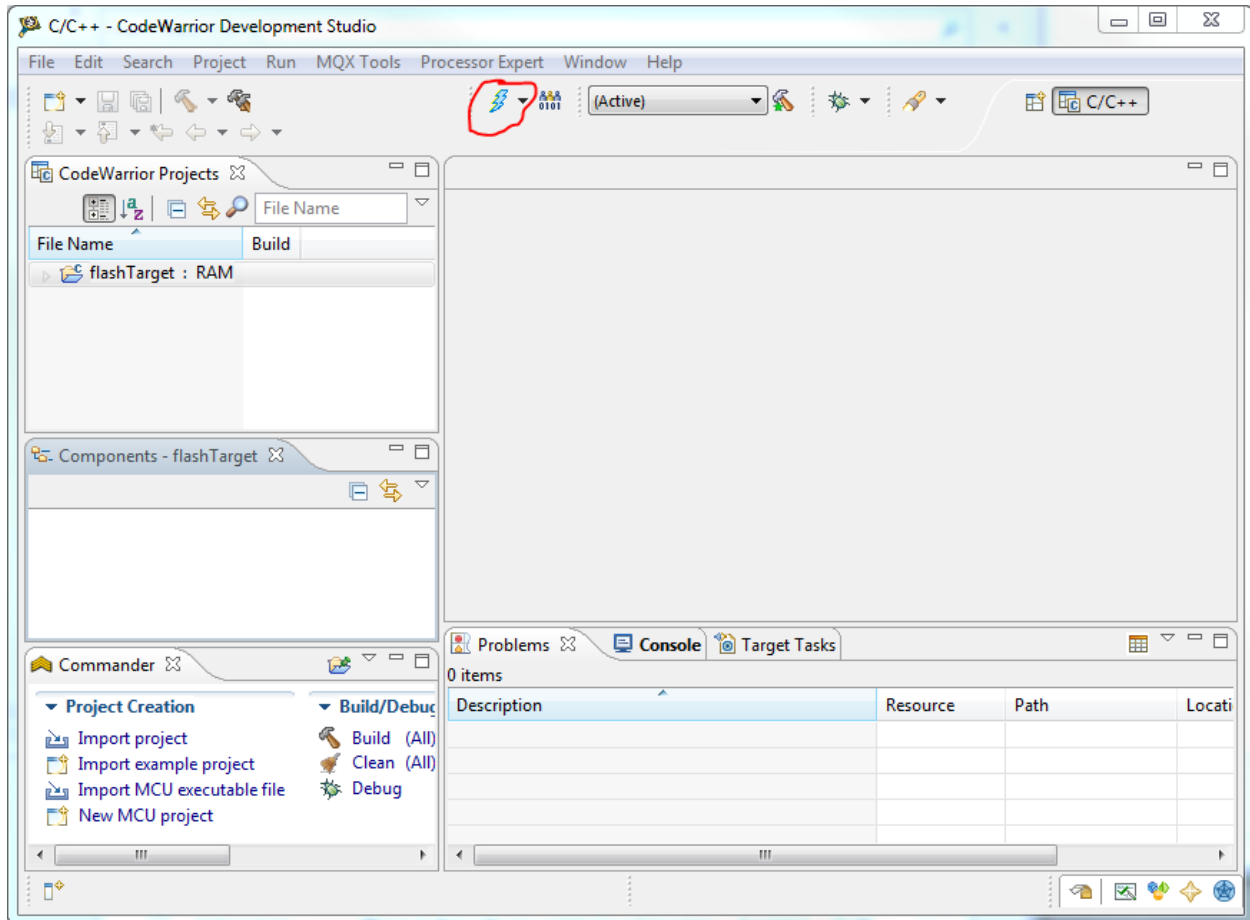


Accept the default options and press finish.

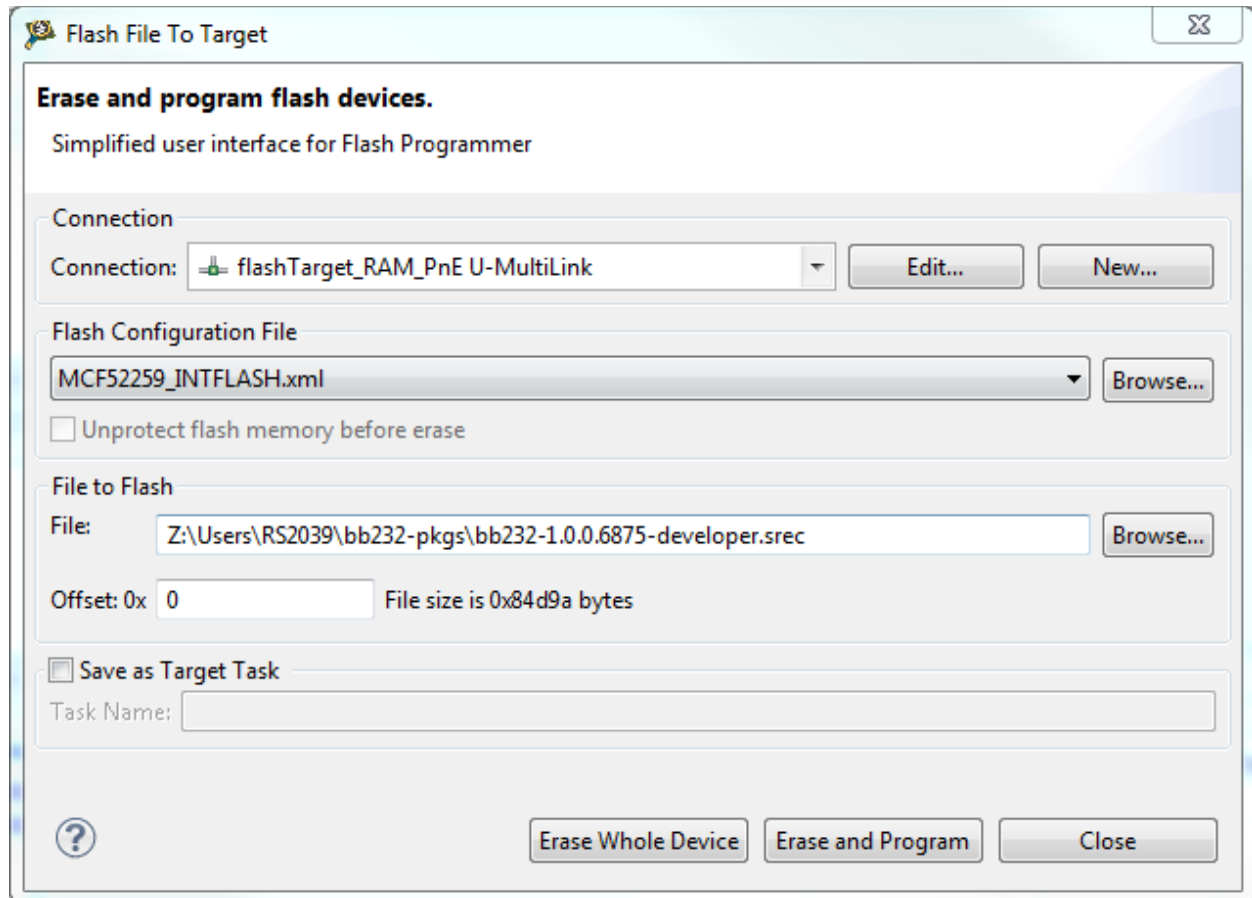


Your new project will appear in the projects view.

Open the “Flash File to Target” dialog under the flash tools icon located on the toolbar.

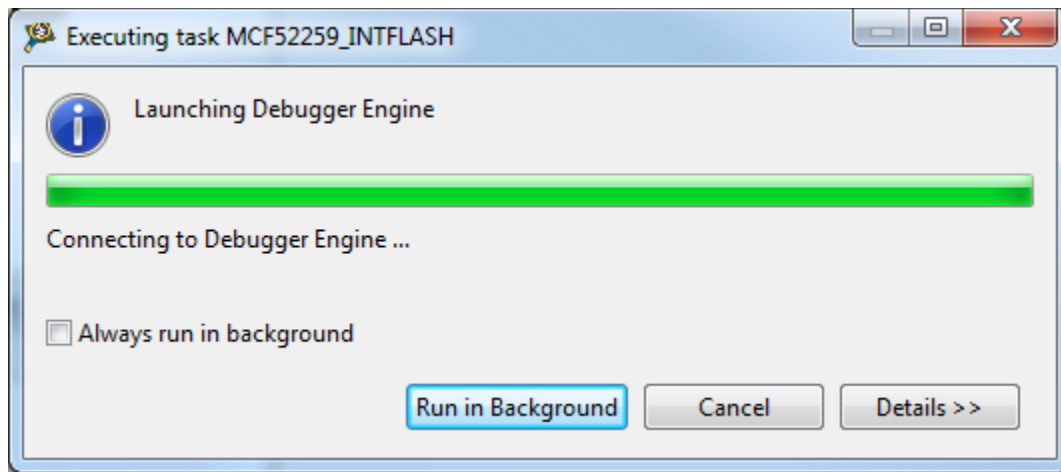


Program the Flash Image on the Target Device

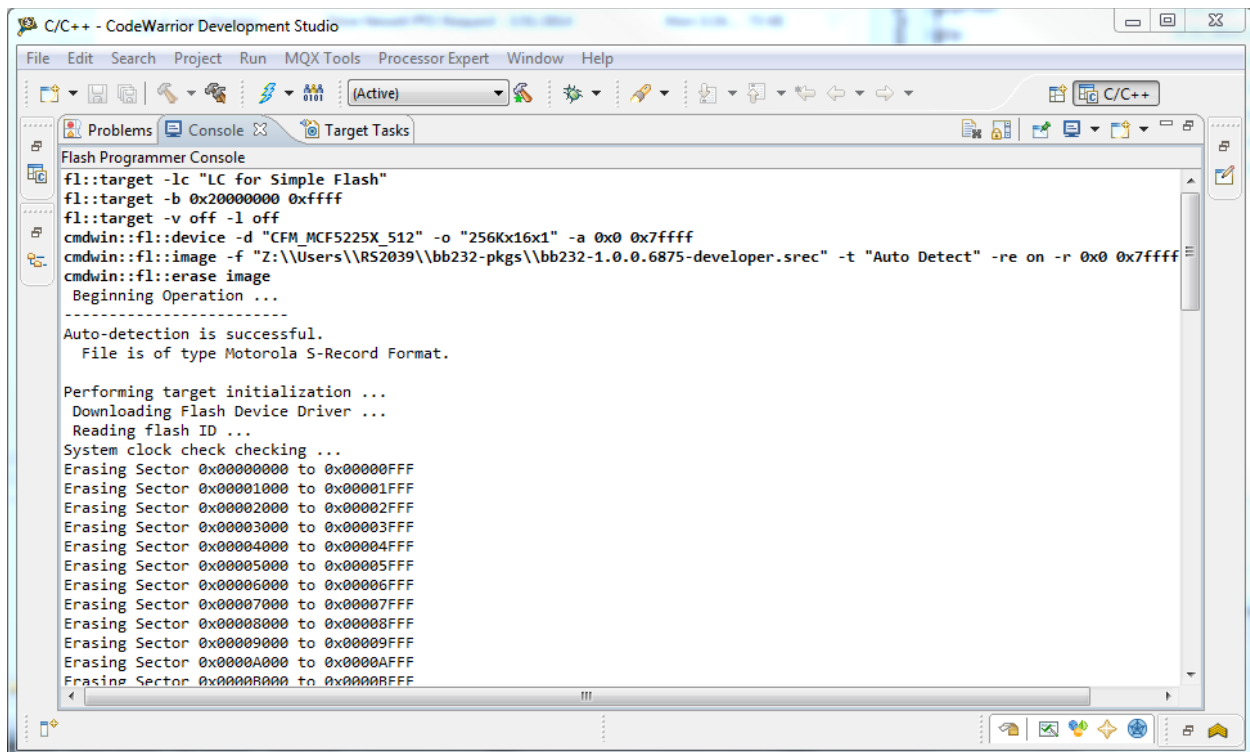


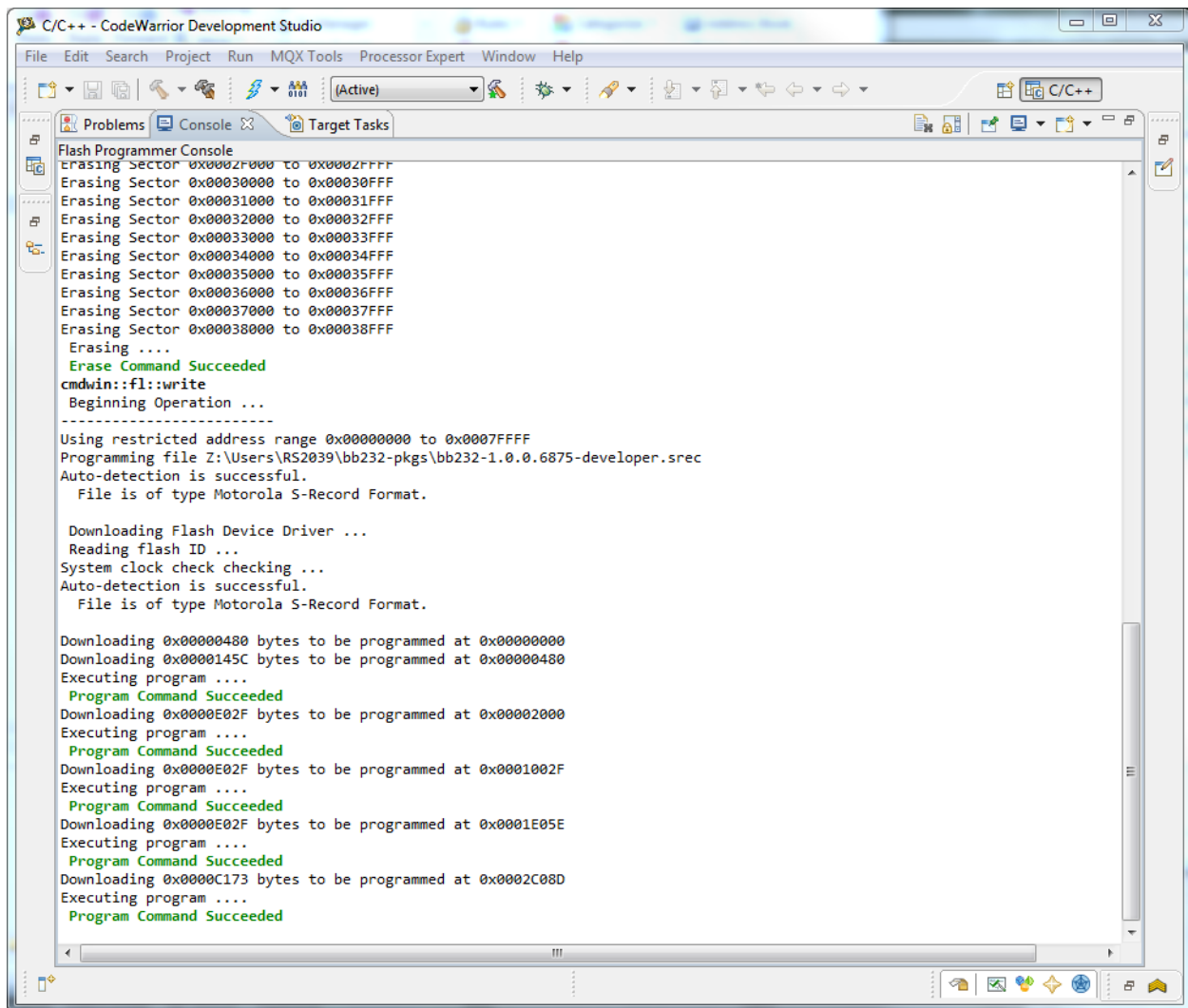
- The connection should be your P&E Micro programming device.
- The flash configuration file should be MCF52259_INTFLASH.HTML.
- Uncheck the "Save as Target Task".
- Browse to your file image to flash.
- Press the "Erase and Program" button.

An executing task dialog will launch during the flash programming operation:



The console view will display the progress of the flash programming operation.





The programming should complete without error within a minute or more, depending on the size of the image.

Reboot the BB-RS232 Adapter

- Remove power from the BB-RS232 adapter.
- Disconnect the P&E Micro ribbon cable attached to the BB-RS232 adapter.
- Power up the BB-RS232 adapter
- Observe the MCU red heartbeat LED