


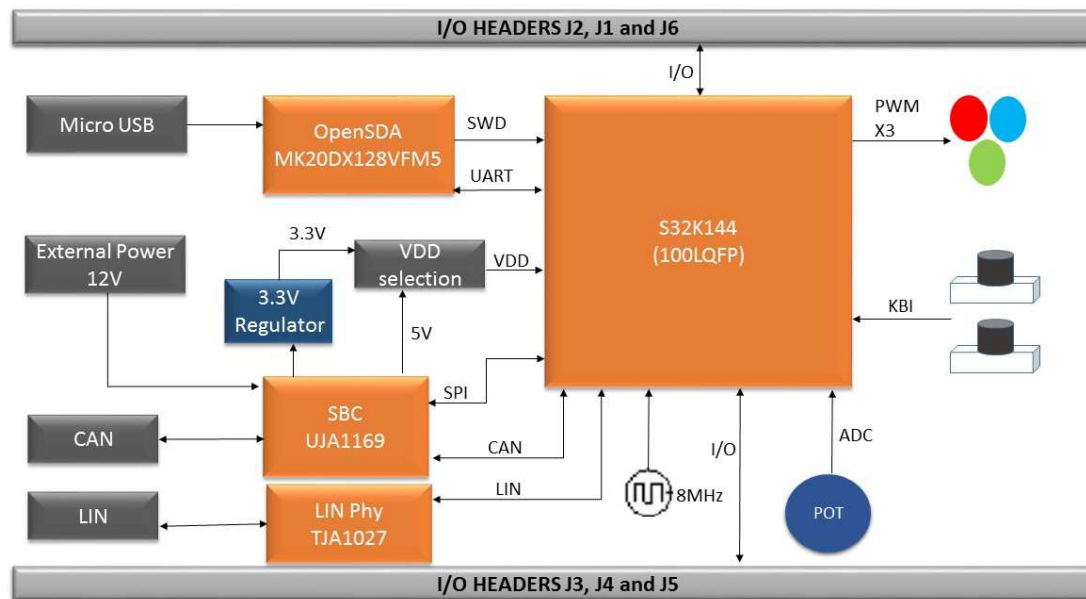
Table of Contents	
2	Notes and Block Diagram
3	S32K144 MCU
4	OpenSDA interface
5	Power Supply/SWD
6	I/O Headers

Revisions			
Rev	Description	Date	Approved
XA	Initial Release	APR-13-2016	O. Romero
A	Prototype Production	APR-14-2016	O. Romero
AX1	Development	AUG-16-2016	O. Romero
B	2nd Release	SEP-02-2016	O. Romero
B1	Update BOM	DEC-16-2016	O. Romero
C1	Swapping signals on J107	OCT-10-2021	A. Gonzalez

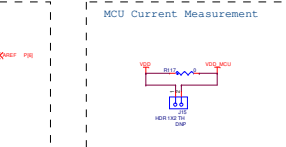
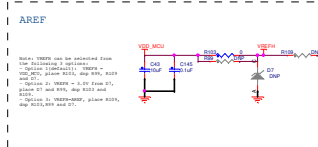
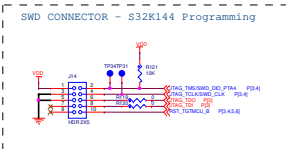
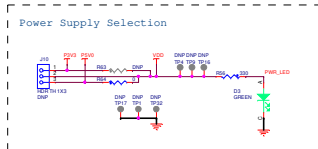
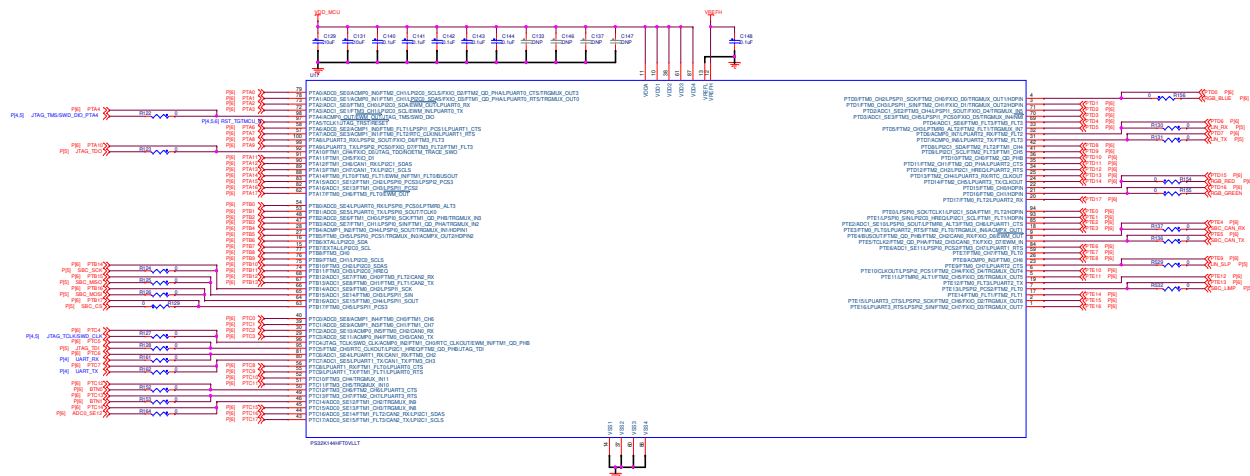
S32K144EVB-Q100

		Automotive Product Group 8501 Williams Cannon Drive West Austin, TX 78725-6598	
<small>This document contains information proprietary to NXP and shall not be used for engineering design, procurement or manufacture in whole or in part without the express written permission of NXP Semiconductors.</small>			
Designer: Oswaldo Romero	Drawing Title: S32K144EVB-Q100	CP: IAD:	PURB: X
Drawn by: Oswaldo Romero	Page Title: Title Page		
Approved: APPROVER	Size: C	Document Number: SCH-29248 PDF: SPF-29248	Rev: C1
Date: Thursday, October 28, 2021		Sheet 1 of 6	

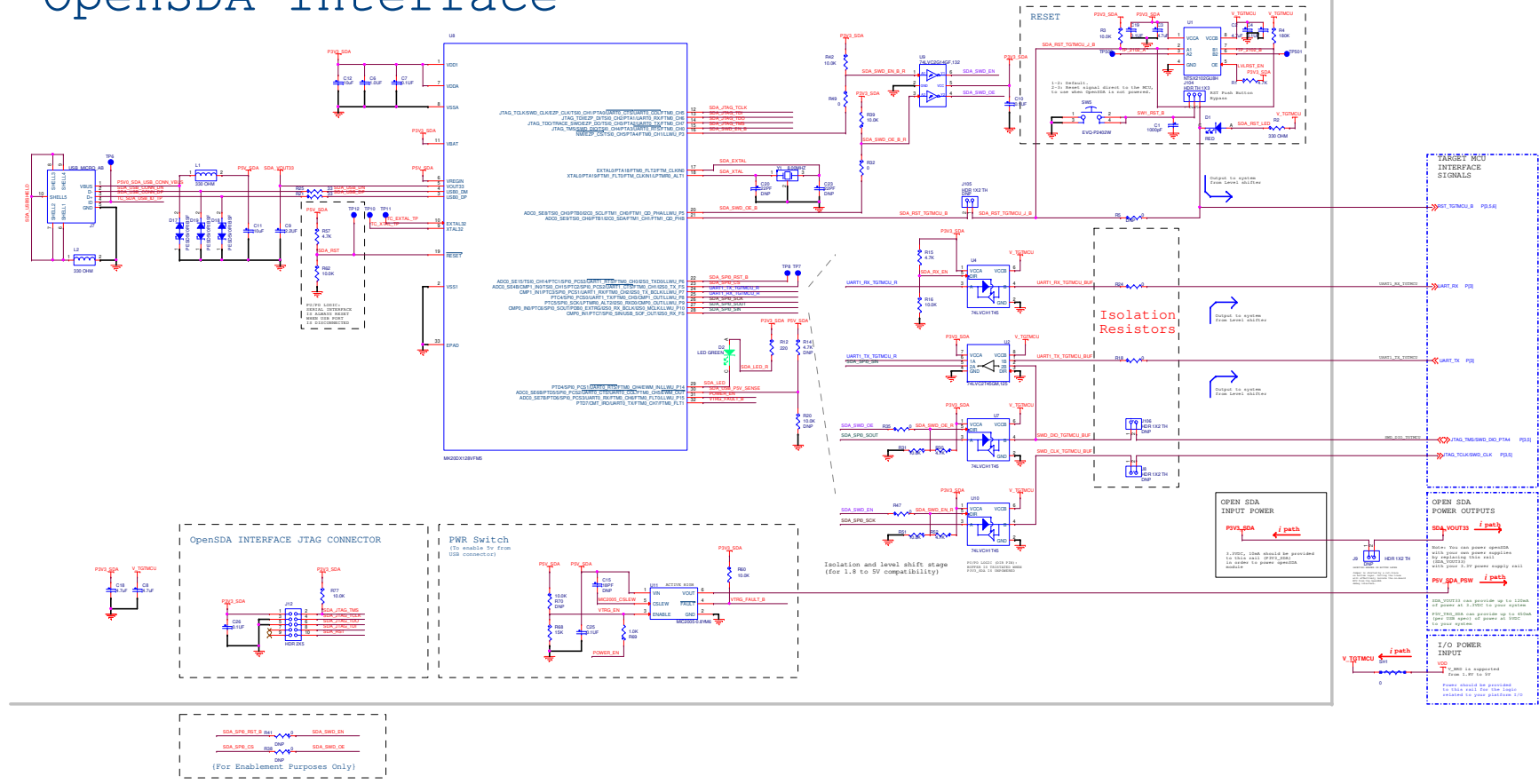
- Unless Otherwise Specified:
 - All resistors are in ohms, 1% and 5%
 - All capacitors are in uF, 10%, 20% and 5%
 - All voltages are DC
 - All polarized capacitors are aluminum electrolytic
- Interrupted lines coded with the same letter or letter combinations are electrically connected.
- Device type number is for reference only. The number varies with the manufacturer.
- Special signal usage:
 - _B Denotes - Active-Low Signal
 - <> or [] Denotes - Vectored Signals
- Interpret diagram in accordance with American National Standards Institute specifications, current revision, with the exception of logic block symbology.



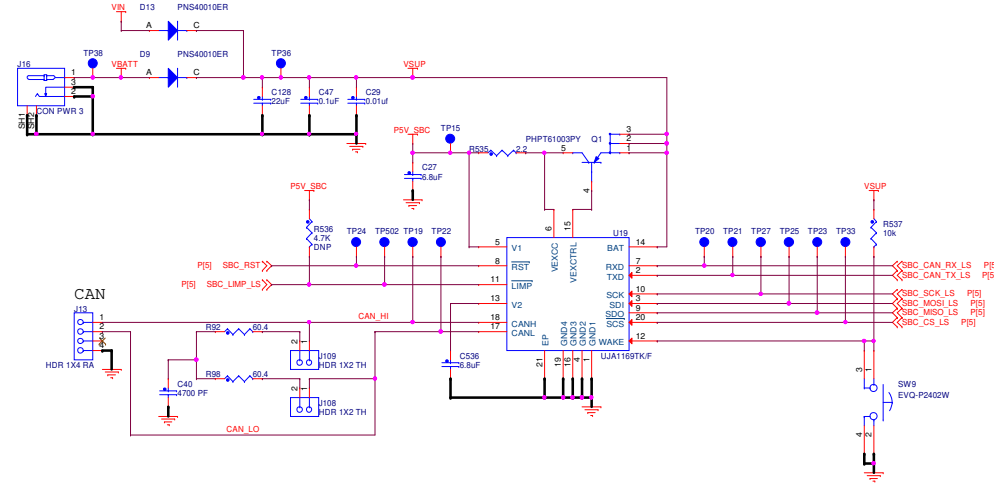
EAP Classification: CP		BUO: PUB_X	
Drawing Title: S32K144EVB-Q100			
Page Title: Notes and Block Diagram			
Size C	Document Number SCH-29248 PDF: SPF-29248	Rev C1	
Date: Thursday, October 28, 2021	Sheet 2 of 6		



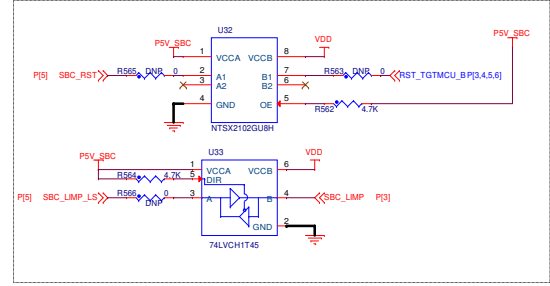
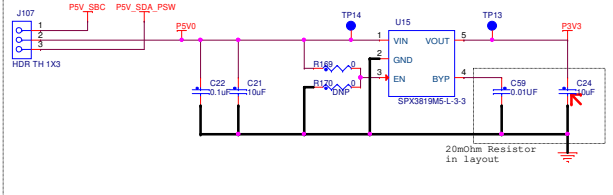
OpenSDA Interface



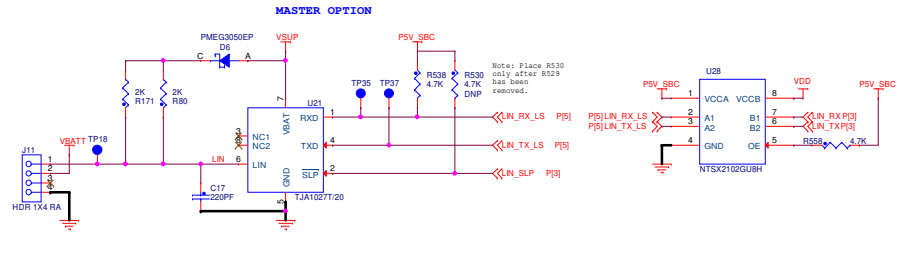
CAN Physical Layer



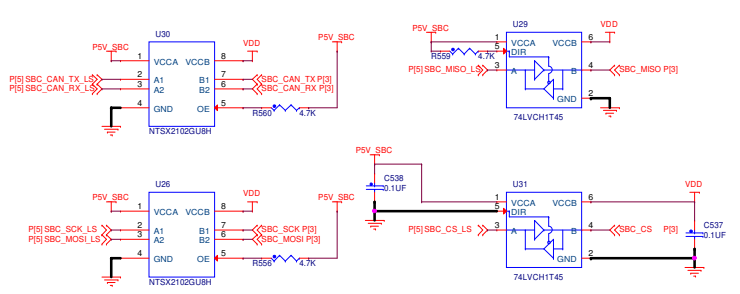
3.3V LDO Power Supply



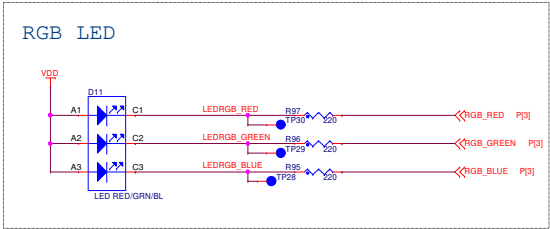
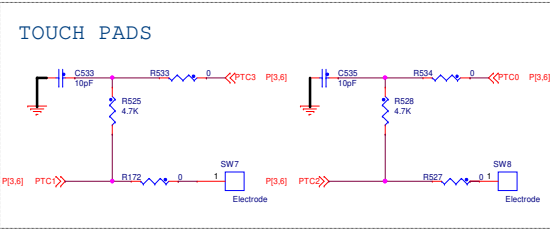
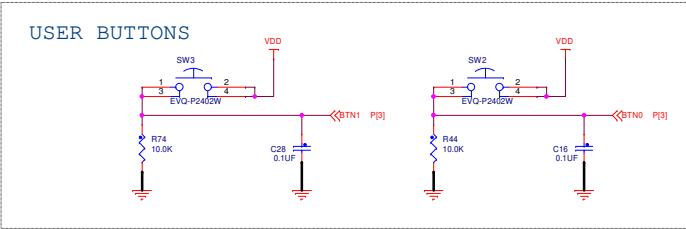
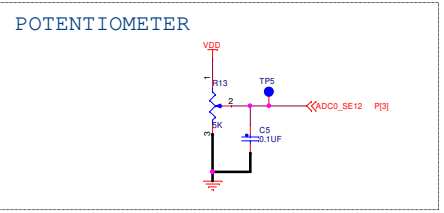
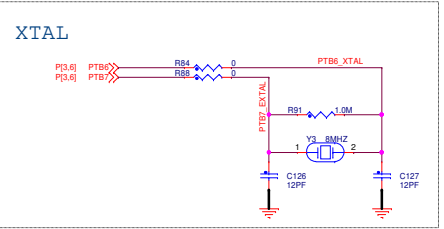
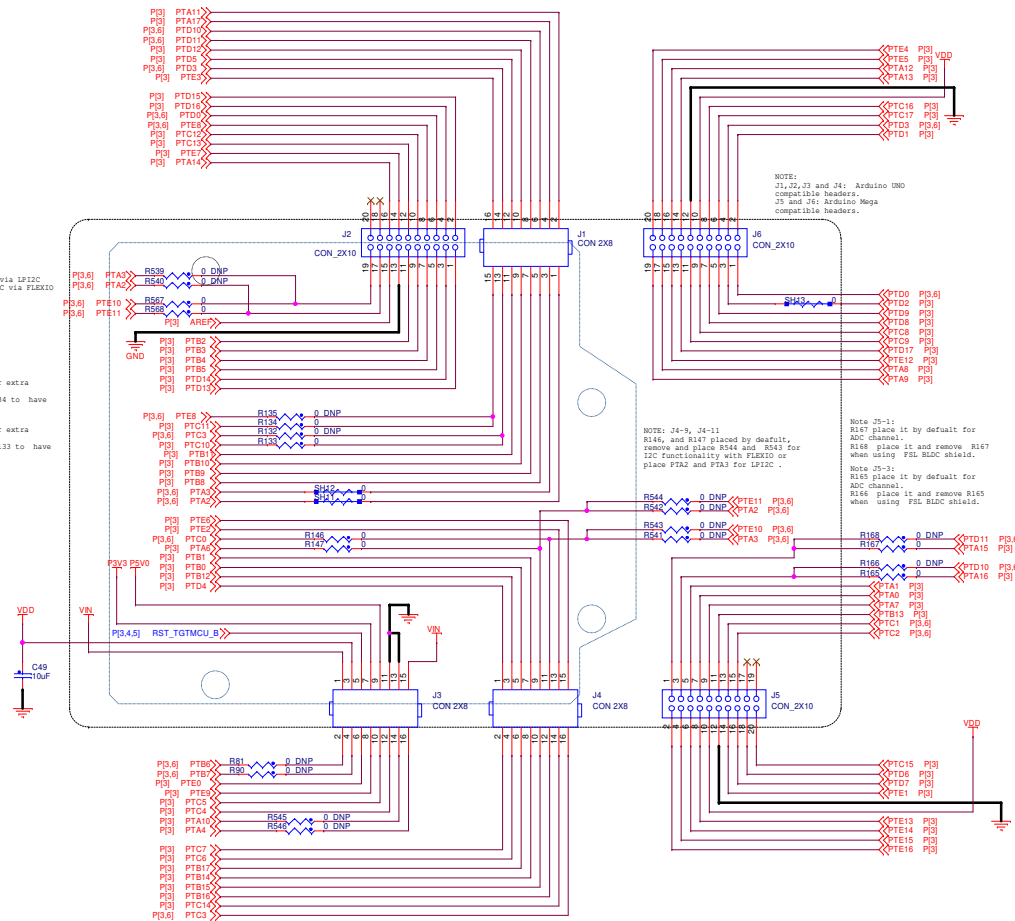
LIN Physical Layer



Level Shifters



EAP Classification: CP		IUC: PUB_X	
Drawing Title: S32K144EVB-Q100			
Page Title: Power Supply/ SWD/ Reset			
Size C	Document Number SCH-29248 PDF: SPF-29248	Rev C1	
Date: Thursday, October 28, 2021	Sheet 5 of 6		



NXP		
IAP Classification: CP: IUC: PUB: X		
S32K144EVB-Q100		
Page Title: IO Headers		
Size C	Document Number SCH-29248 PDF: SPF-29248	Rev C1
Date: Thursday, October 28, 2021	Sheet 6 of 6	