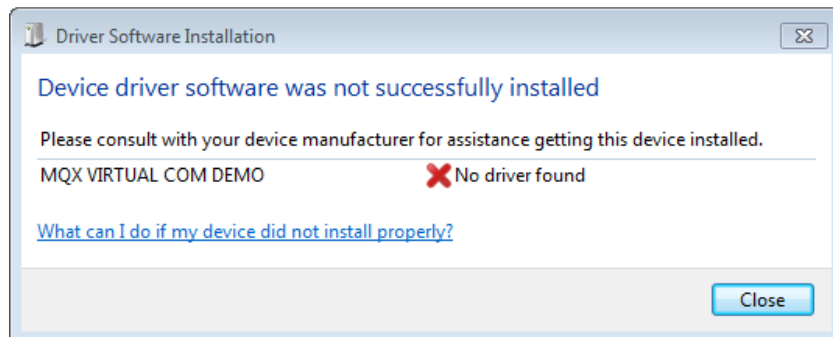


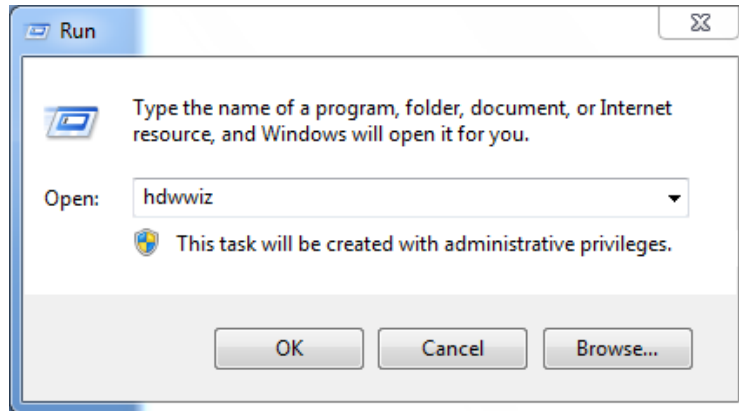
Running MQX 4.1 CDC Device Example

- 1) If you have not installed CW10.6 and MQX 4.1 you can download the installers from the following links:
 - a. www.freescale.com/cwmcu10
 - b. www.freescale.com/mqx
- 2) Open virtual_com example located in MQX installation path:
C:\Freescale\Freescale_MQX_4_1\usb\device\examples\cdc\virtual_com\build\cw10gcc
- 3) Previously you must have to build MQX libraries, you can find information about how to do this in ***MQX_Getting_Started.pdf*** located in MQX installation path:
C:\Freescale\Freescale_MQX_4_1\doc
- 4) Connect TWR MCU module with TWR-SER module using TWR-ELEV and set the appropriate jumper settings shown in the same document indicated in point 3.
 - a. Be sure that the clock reference is selected to be the TWR-SER Xtal.
 - b. J16 must be set in position 3-4 (USB device)
- 5) Build, download and run virtual_com example.
- 6) Connect the minUSB port in TWR-SER board to your PC. Windows will recognize the USB CDC device and will try to install a driver but it will fail.

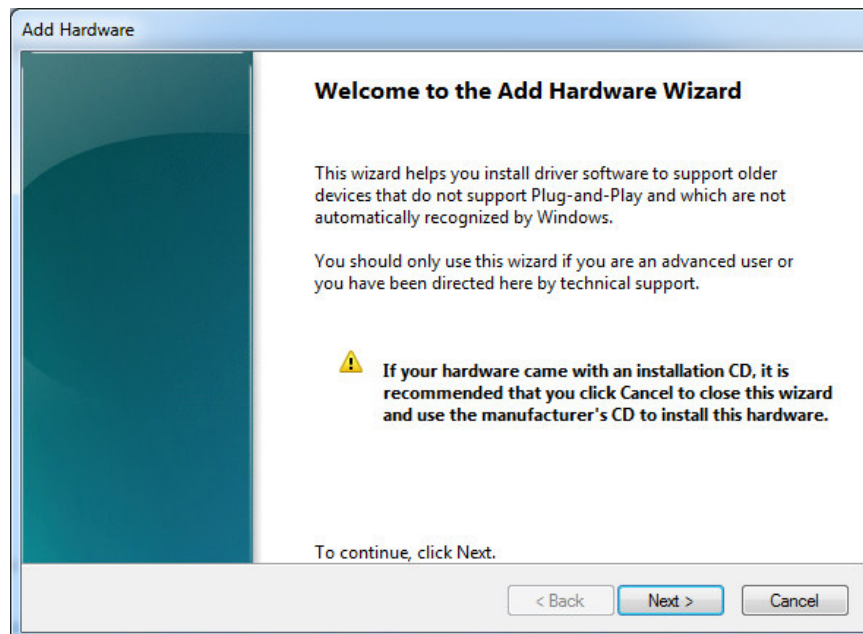


Install the Driver Manually

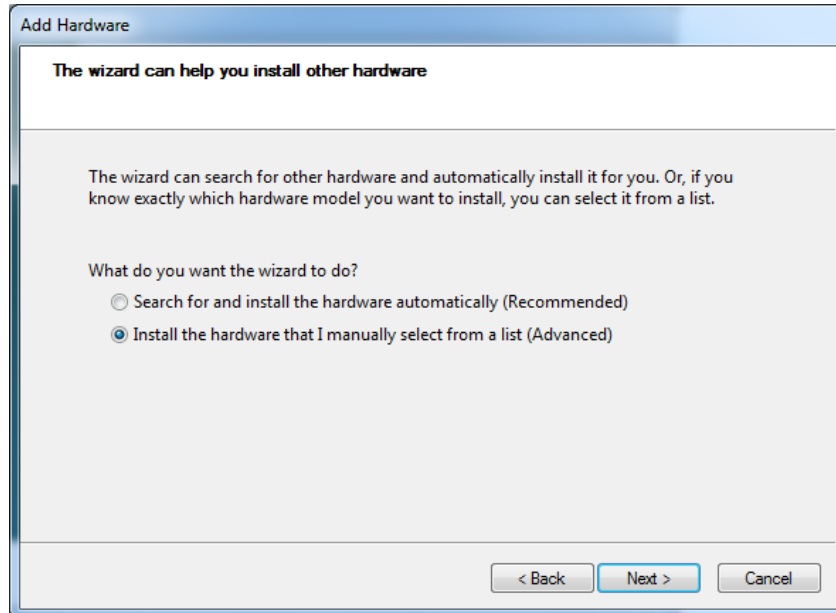
- 7) On Windows Desktop press ctrl + R to open Run window and type hdwwiz.



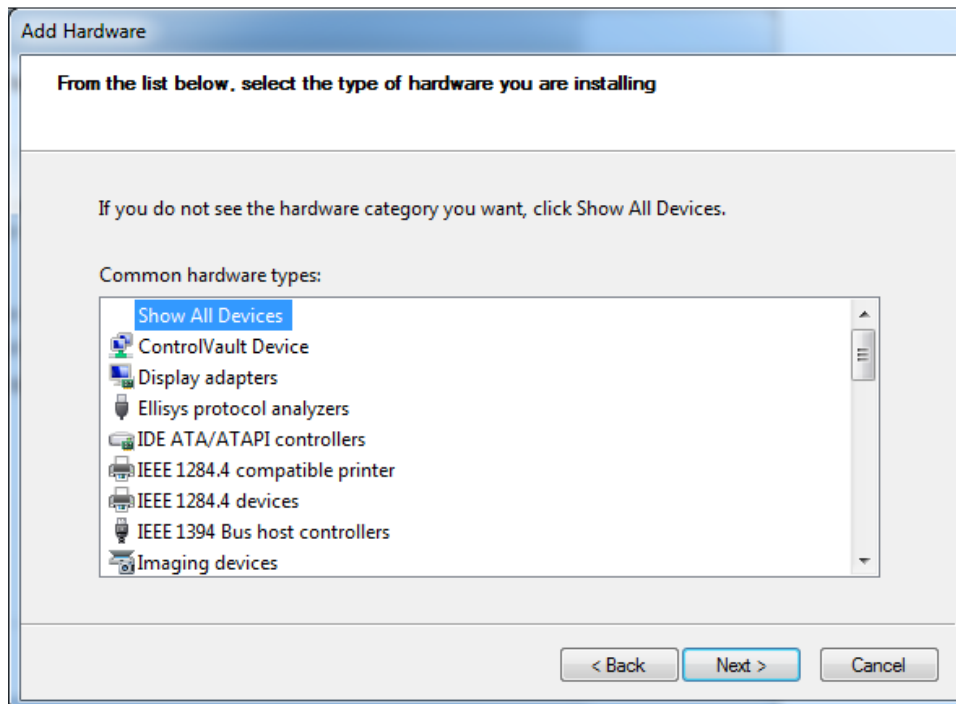
- 8) The new Hardware Wizard will open, click Next.



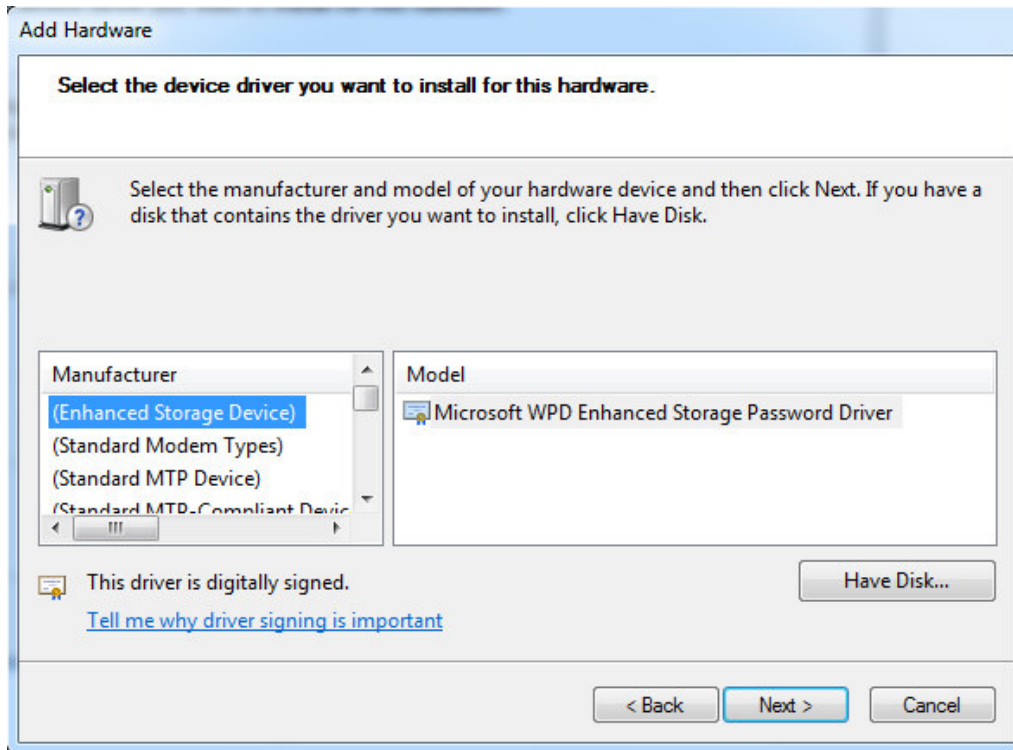
9) Select to install manually



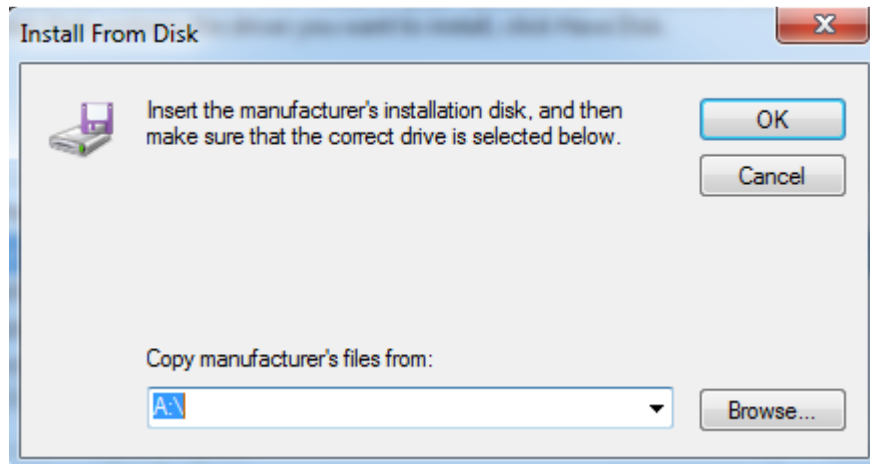
10) Select Show All Devices



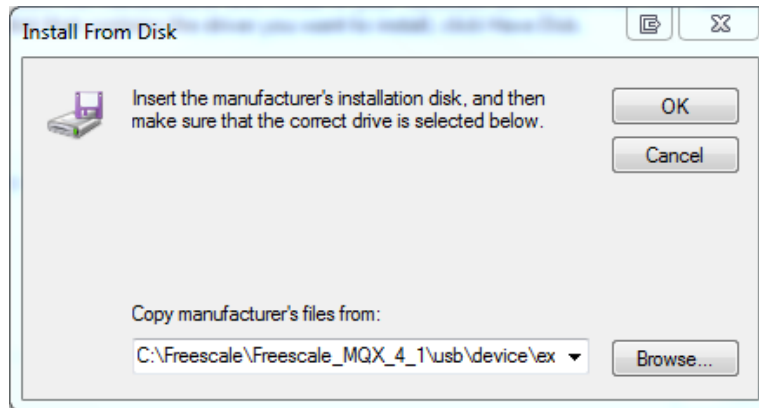
11) Click Have a disk



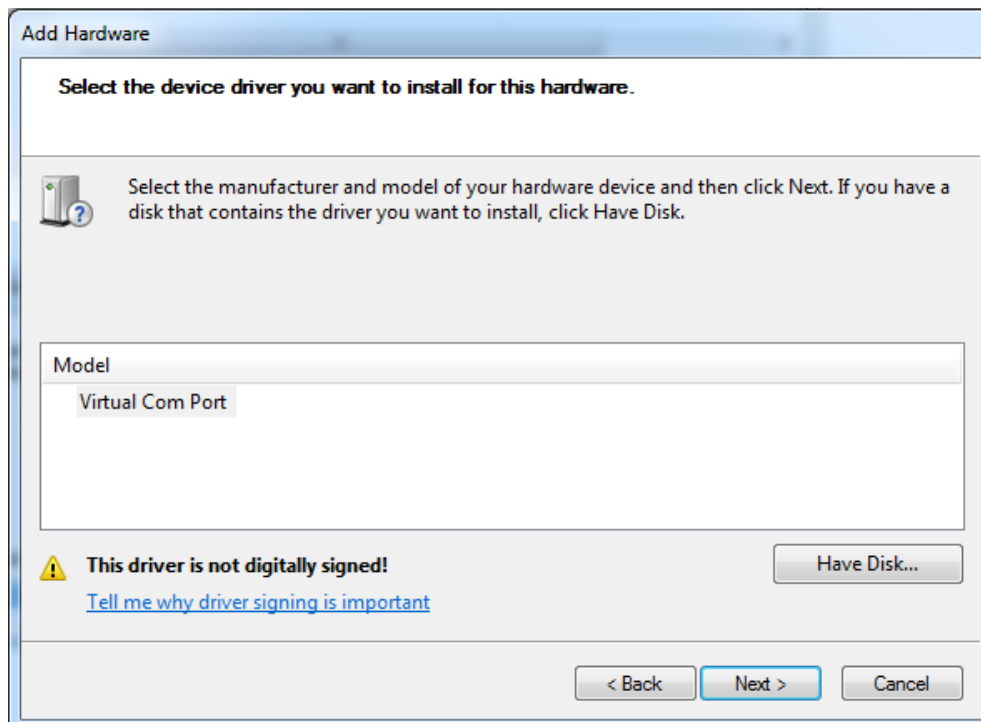
12) Click Browse.



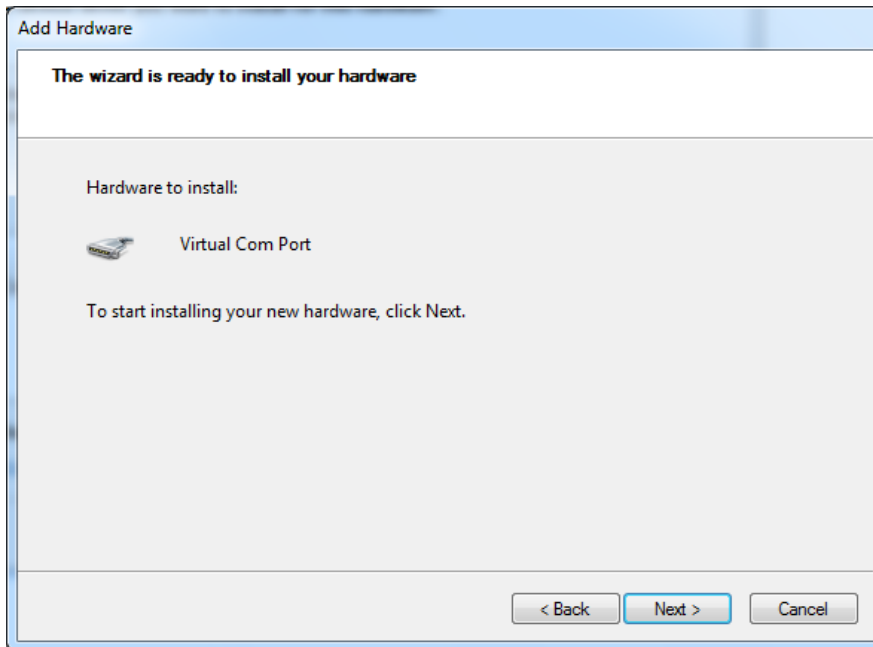
- 13) Look for fsl_ucwpx.inf located in the path below, then click Open and Ok.
C:\Freescale\Freescale_MQX_4_1\usb\device\examples\cdc\virtual_com\inf



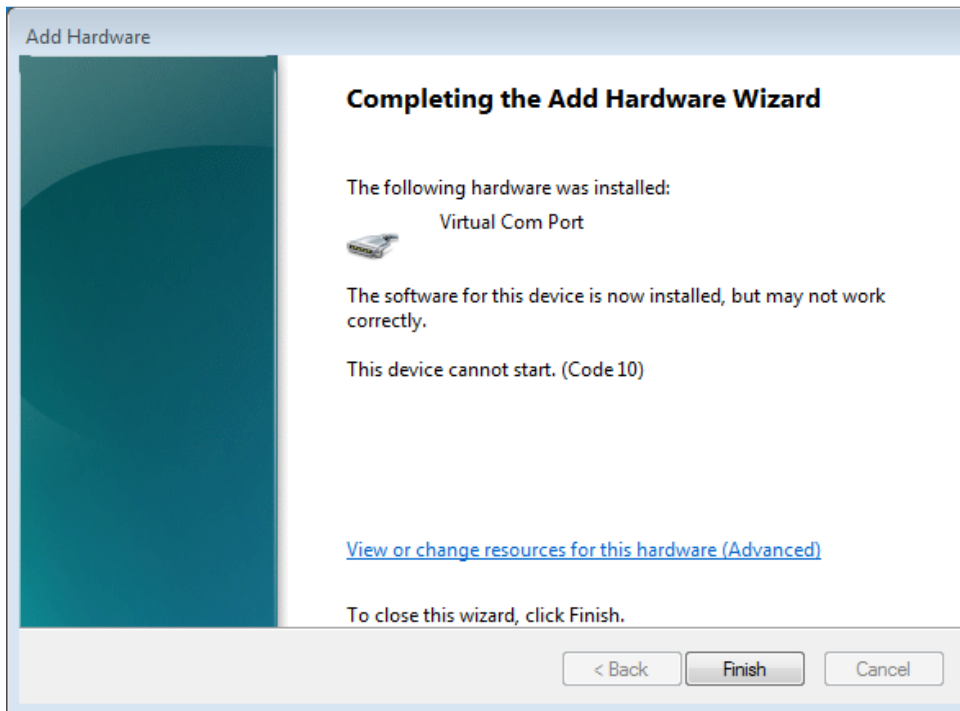
- 14) Click next



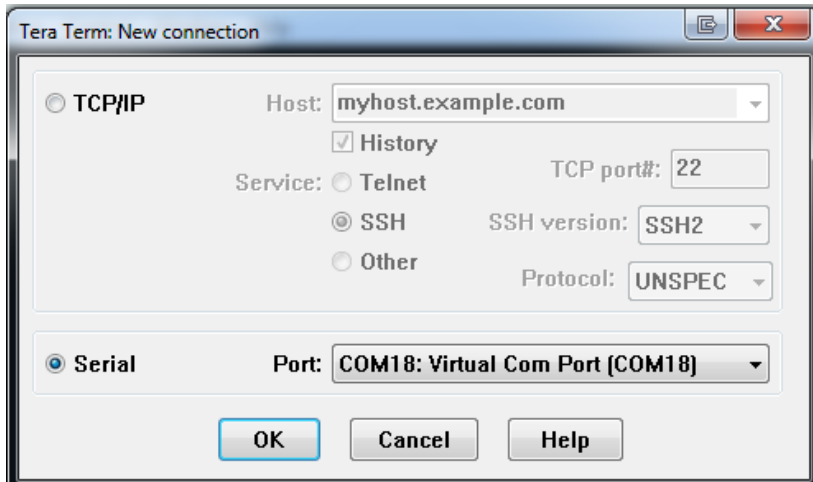
15) Click Next.



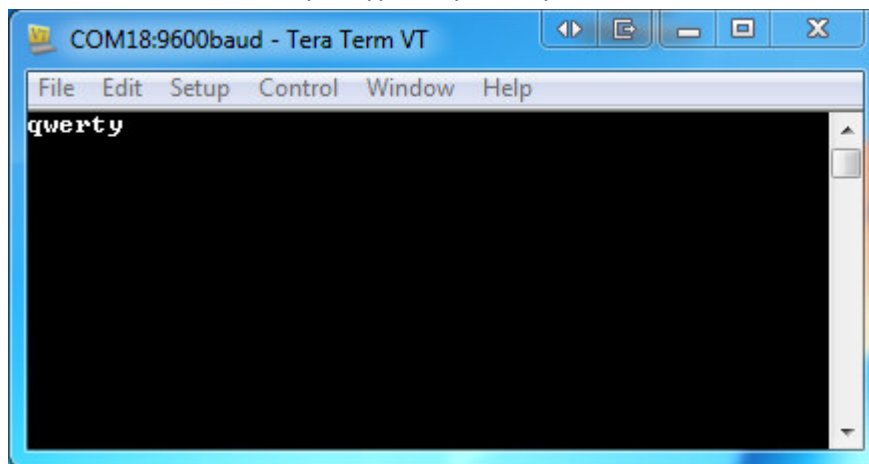
16) Click Finish



17) Reset MCU and open a terminal selecting Virtual COM Port.



18) The application makes echo of what you type on your keyboard.



19) In case your COM Port is not recognized uninstall the Virtual Com Port driver in the Windows Device Manager, unplug and plug again the MCU to your PC and repeat steps 18 and 19. You can see how to open Windows device manager in the link below.

<http://technet.microsoft.com/en-us/library/cc754081.aspx>

